



Network Manager
nominated by
the European Commission



Monthly Network Operations Report

Overview – January 2016



1. SUMMARY

Traffic in January 2016 increased by 1.7% compared to January 2015 and was just above the low forecast. Traffic avoiding Brest ACC resulted in increases for Shannon, Shanwick and Santa Maria ACCs, with French ATC industrial action on 26 January also distorting traffic flows. European traffic to/from the Middle East (United Arab Emirates, Israel, Qatar and Saudi Arabia) and the United States increased, but European traffic to/from the Russian Federation and Egypt continued to decline.

Total ATFM delays increased by 70% in January 2016. En-route ATFM delays increased by 371%; ATFM measures in Brest ACC due to ERATO implementation accounted for 50% of en-route ATFM delay. Airport ATFM delays increased by 13.3%.

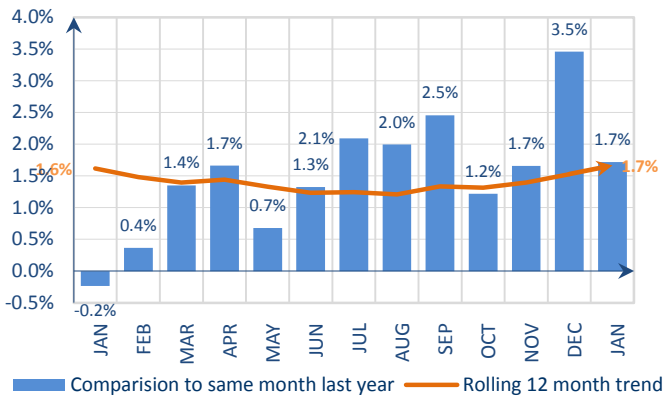
Highlights include:

- Ongoing implementation of ERATO ATM system generated significant ATFM delays in Brest ACC with additional delays in Madrid, Bordeaux and, to a lesser extent, in Canarias ACC. However, Brest ACCs average delay per flight decreased from 8.7 min/ft in December 2015 to 3.55 min/ft in January;
- Industrial action by French public services on 26 January generated 83,400 minutes of ATFM delay with ATFM protective measures in Maastricht and Madrid ACCs generating additional en-route ATFM delay. Aircraft operators were requested to implement a 20% flight reduction program for a number of French airports; approximately 1,000 flightsⁱ were removed from the network. There were some additional airport ATC staffing delays at Paris/Orly airport on 27 January due to the blockage of access to the airport by French taxi drivers;
- Seasonal weather and airport capacity measures in conjunction with technical issues (radar and frequency) impacted airport operations at Istanbul/Ataturk and Istanbul/Sabiha Gökçen.

The average en-route delay per flight in NM areaⁱⁱ in January 2016 was 0.53 min/ft, which was above the monthly guidelineⁱⁱⁱ value of 0.2 min/ft.

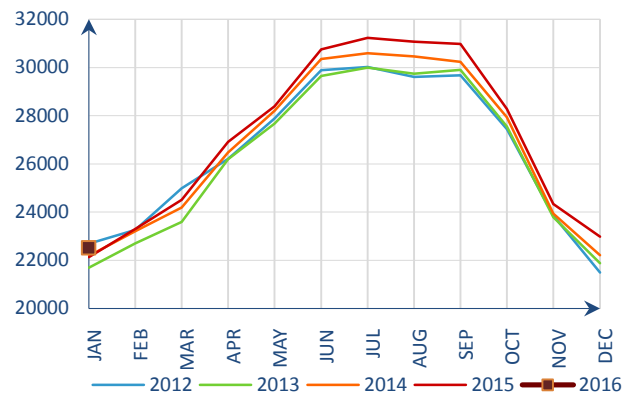
2. TOTAL TRAFFIC

Monthly traffic trend



Traffic increased by 1.7% in January 2016^{iv}.

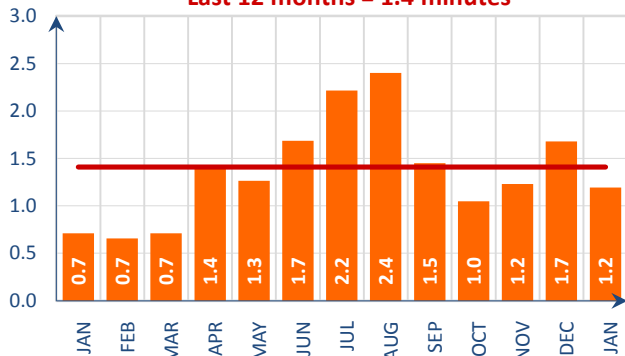
Average daily traffic for last 5 Years



Average daily traffic in January 2016 was the highest January traffic since 2013.

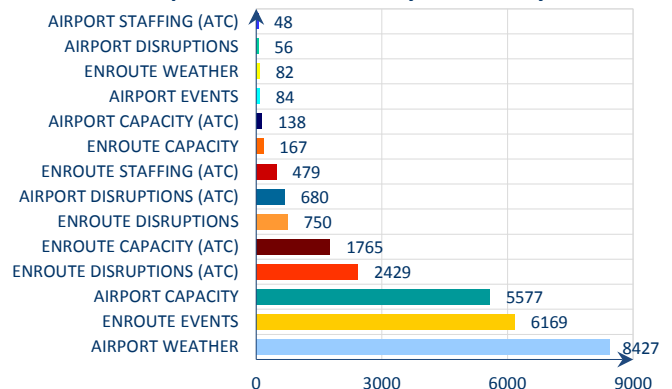
3. ATFM DELAYS

Monthly delay (min) per flight
Last 12 months = 1.4 minutes



Average ATFM delay per flight increased from 0.70 min/ft to 1.2 min/ft in January 2016^v.

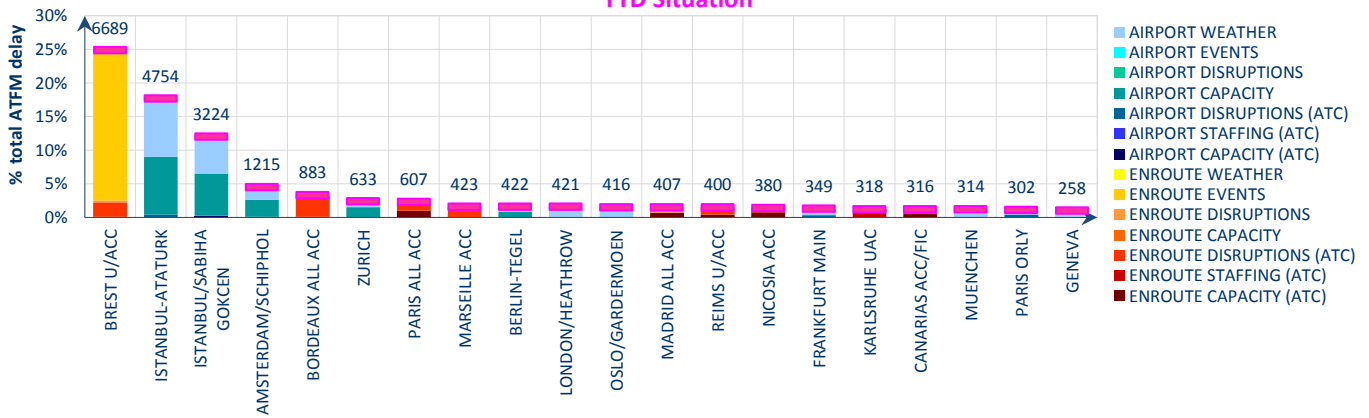
Proportion of ATFM delays in January 2016



Airport weather (31.4%), en-route events (23%) and airport capacity (20.8%) were the main causes of ATFM delays in January 2016.

Top 20 delay locations (min) in January 2016

YTD Situation

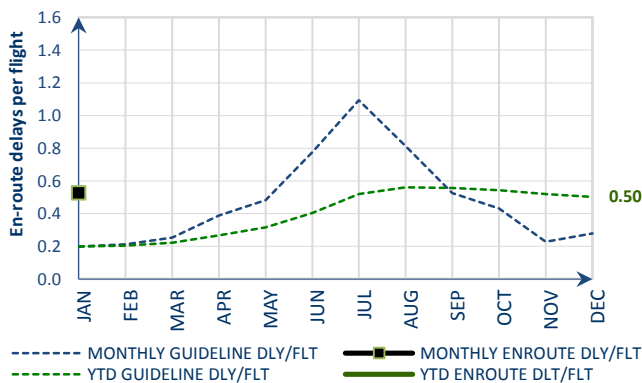


These are the top 20 delay generating locations for the reporting month with respect to ATFM delays. Figures are the average daily delays in minutes for the individual locations. Pink dashes (Year-To-Date - YTD) indicate their average daily ATFM delay since the beginning of the year.

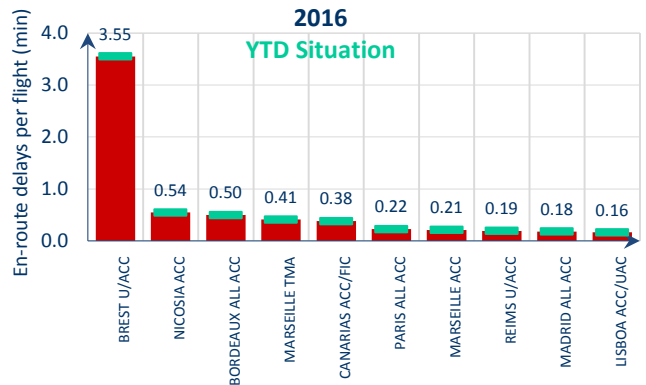
- Implementation of ERATO ATM system generated significant ATFM delays in Brest ACC with additional delays generated in Madrid and Bordeaux ACCs with some delays (in conjunction with increased traffic demand) in Canarias ACC;
- French ATC industrial action on 26 January resulted in delays for the French ACCs and airports with additional delay generated by Madrid ACC due to ATFM protective measures;
- Seasonal weather (fog, strong winds, snow) impacted operations particularly at Istanbul/Ataturk, Istanbul/Sabiha Gökçen, Amsterdam/Schiphol, Zurich, Berlin/Tegel (in conjunction with airport capacity delays due to de-icing), London/Heathrow and Oslo/Gardermoen airports;
- Airport capacity delays at Istanbul/Ataturk, Istanbul/Sabiha Gökçen, Amsterdam/Schiphol and Zurich airports; Priority Departure (PRIDEP) trial generated some airport capacity delays at Zurich;
- En-route ATC capacity delays at Paris, Madrid, Nicosia and Canarias ACCs; en-route ATC staffing issues in Karlsruhe and Nicosia ACCs;
- Technical issues at Istanbul/Ataturk and Istanbul/Sabiha Gökçen airports.

4. EN-ROUTE ATFM DELAY MONITORING

Monthly en-route delay per flight monitoring



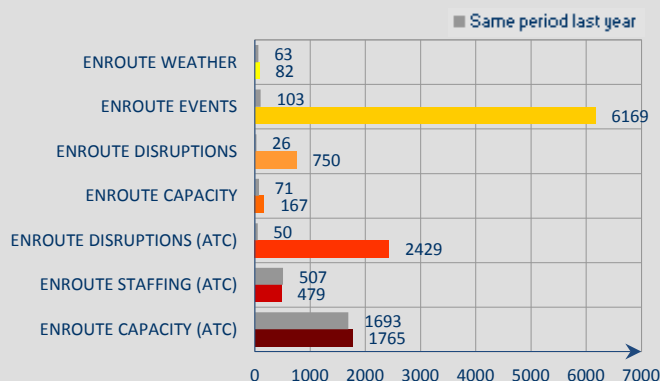
Top 10 en-route delay per flight in January 2016



Reporting month: The average en-route ATFM delay per flight in the NM areaⁱⁱ in January 2016 was 0.53 min/ft, which was above the corresponding monthly guidelineⁱⁱⁱ value of 0.2 min/ft.

Implementation of ERATO ATM system generated significant ATFM delays in Brest ACC with additional delays in Madrid and Bordeaux ACCs and some delays (in conjunction with increased traffic demand) in Canarias ACC; French ATC industrial action resulted in delays for the French ACCs with additional delay generated by Madrid ACC due to ATFM protective measures.

Year-to-date average daily en-route delays



- En-route ATFM delays in 2015 are above the corresponding levels in 2014 with;
- En-route ATC capacity delays at Paris, Madrid, Nicosia and Canarias ACCs;
- En-route weather some delays due to en-route weather in London and Langen ACCs;
- En-route ATC staffing delays in at Karlsruhe and Nicosia ACC;
- En-route ATC disruption delays in the French ACCs (ATC industrial action in January);
- En-route capacity delays in, Karlsruhe UAC;
- En-route event delays in Brest ACC (ERATO system implementation);
- En-route disruption delays in Madrid and Maastricht ACCs (application of ATFM protective measures during French ATC industrial action in January); delays in Madrid, Bordeaux and Canarias ACCs due to Brest ACC ERATO implementation.

NOTICE

Traffic and Delay Comparisons

All traffic and delay comparisons are between report month and equivalent month of previous year, unless otherwise stated.

NM Area

All figures presented in this report are for the geographical area that is within Network Manager's responsibility (NM area).

Regulation Reason Groupings

See Analysis for more information on colour coding.

Reporting Assumptions and Descriptions

For further information on the NM Area and the regulation reason groupings, go to the Reporting Assumptions and Descriptions document available on the EUROCONTROL website at <http://www.eurocontrol.int/articles/network-operations-monitoring-and-reporting>.

© 2016 The European Organisation for the Safety of Air Navigation (EUROCONTROL).

This document is published by EUROCONTROL in the interests of exchange of information. It may be copied in whole or in part, providing that the copyright notice and disclaimer are included. The information contained in the document may not be modified without prior written permission from EUROCONTROL. EUROCONTROL makes no warranty, either implied or express, for the information contained in this document, neither does it assume any legal liability or responsibility for the accuracy, completeness or usefulness of this information.

Operational Analysis & Reporting,
Performance, Forecasts and Relations (PFR) Unit,
Network Manager Directorate (NMD),
EUROCONTROL,
96 Rue de la Fusée,
B - 1130 Brussels
Telephone: +32 (0)2 729 1155
Fax: +32 (0)2 729 9189
mailto:nm.ops.perf@eurocontrol.int
<http://www.eurocontrol.int/articles/network-operations-monitoring-and-reporting>

ⁱ NM estimate.

ⁱⁱ See Notice for more information on NM Area.

ⁱⁱⁱ NM's calculation that provides the guideline en-route delay (min) requirements to achieve the annual target (0.5 min/flight).

^{iv} See Notice for more information on traffic and delay comparison.