



**Network Manager**  
nominated by  
the European Commission



# Monthly Network Operations Report

Overview – February 2019



# 1. SUMMARY

Traffic in February 2019 increased by 3.0% compared to February 2018 and was in line with the baseline forecast. Seven states added more than 50 flights daily to the network with Germany, Spain and Italy as the top contributors.

En-route ATFM delays (12,055 min/daily) increased by 46.6% and airport ATFM delays (13,965 min/daily) increased by 15.8% compared to February 2018.

There were, on average, 253 daily flights with an en-route ATFM delay of at least 15 minutes (+42.9% compared to February 2018).

Highlights include:

*En-route:*

- High en-route capacity and staffing delays in Karlsruhe UAC.

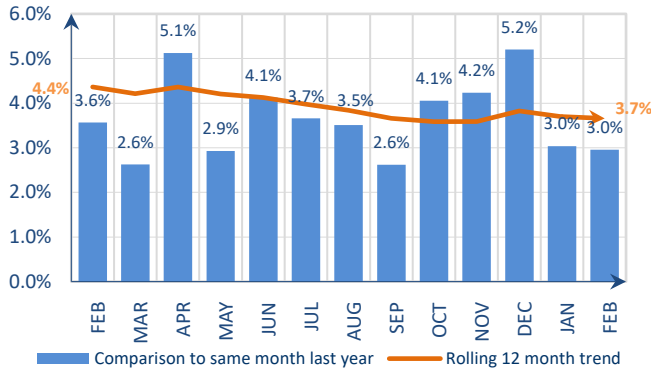
*Airport:*

- Low visibility and strong winds impacted operations at several airports;
- Airport capacity issues at Istanbul/Atatürk airport.

The average en-route ATFM delay per flight in the NM area<sup>i</sup> in February was 0.46 min/ft, which is above the corresponding monthly guideline<sup>ii</sup> value of 0.14 min/ft. The average YTD en-route ATFM delay per flight in 2019 in the NM area<sup>i</sup> is 0.41 min/ft which is well above the corresponding guideline of 0.12 min.

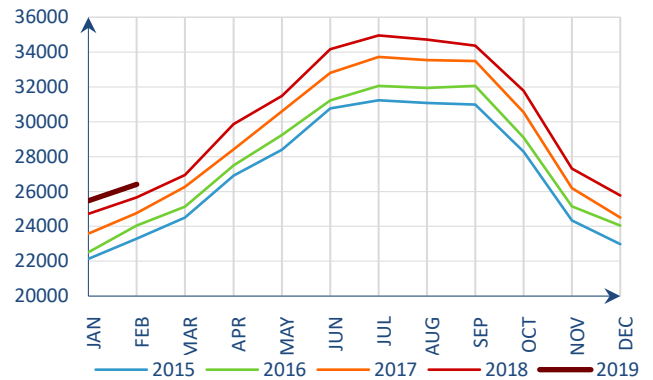
## 2. TOTAL TRAFFIC

Monthly traffic trend



Traffic increased by 3.0% in February 2019<sup>iii</sup>.

Average daily traffic for last 5 Years

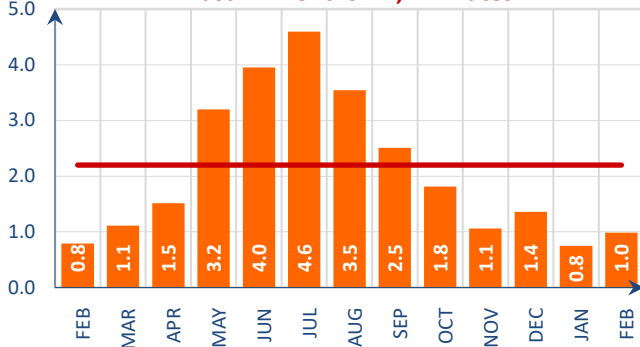


Average daily traffic in February 2019 was 26,416, the highest ever recorded for February.

## 3. ATFM DELAYS

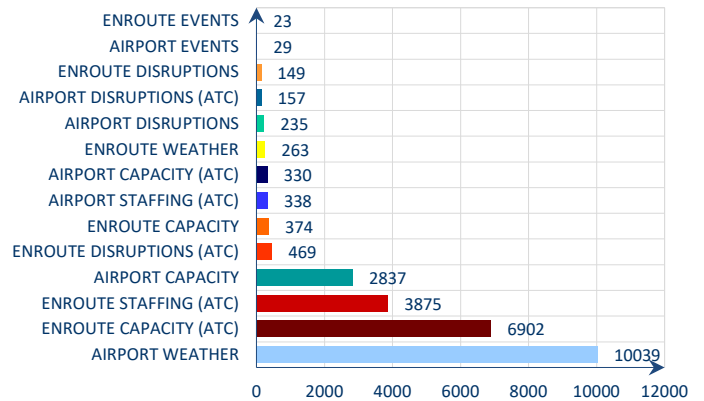
Monthly delay (min) per flight

Last 12 months = 2,2 minutes



Average ATFM delay per flight increased from 0.8 min/ft in January 2019 to 1.0 min/ft in February 2019.

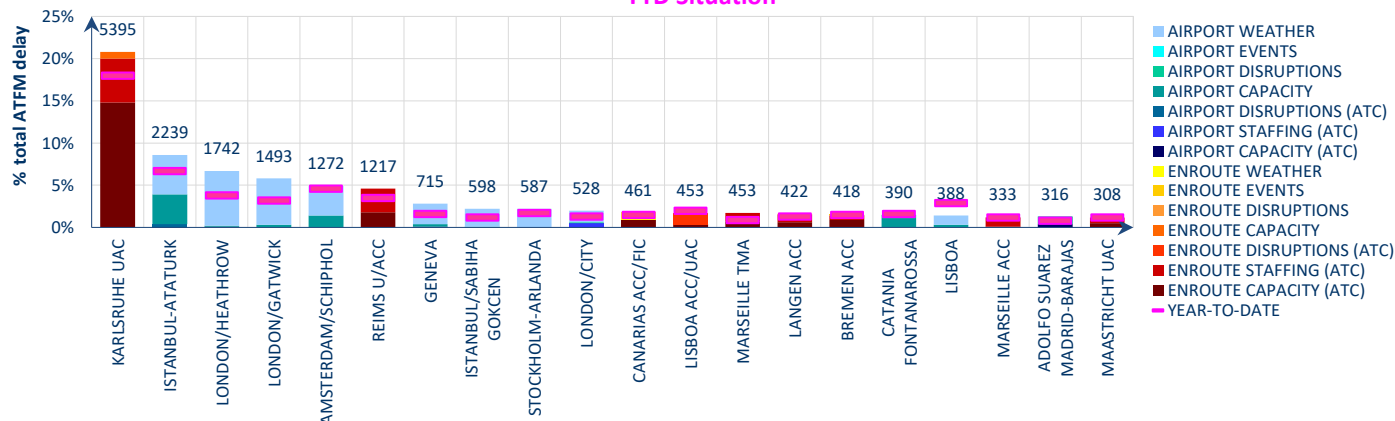
Reasons for ATFM delays in February 2019



Airport weather (38.6%), en-route ATC capacity (26.5%), en-route ATC staffing (14.9%) and airport capacity (10.9%) were the main causes of ATFM delays in February 2019.

## Top 20 delay locations (min) in February 2019

YTD Situation

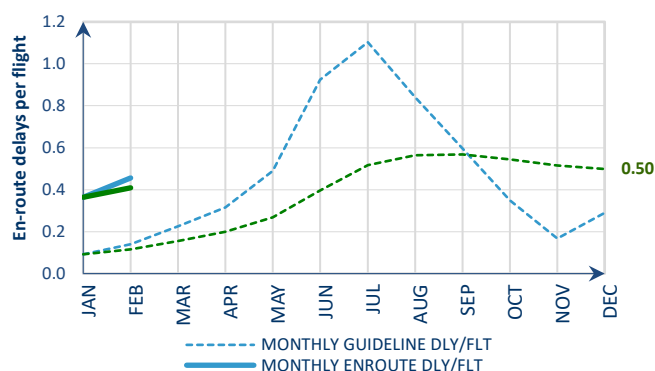


These are the top 20 delay generating locations for the reporting month with respect to total ATFM delays. Figures are the average daily delays in minutes for the individual locations.

- High en-route capacity and staffing delays in Karlsruhe UAC;
- Low visibility and strong winds impacted operations at London/Heathrow, London/Gatwick, Istanbul/Atatürk and Amsterdam/Schiphol;
- Airport capacity issues at Istanbul/Atatürk airport.

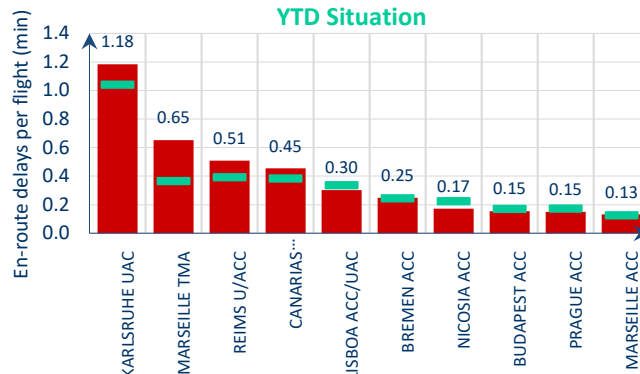
## 4. EN-ROUTE ATFM DELAY MONITORING

Monthly en-route delay per flight monitoring



Top 10 en-route delay per flight in February 2019

YTD Situation

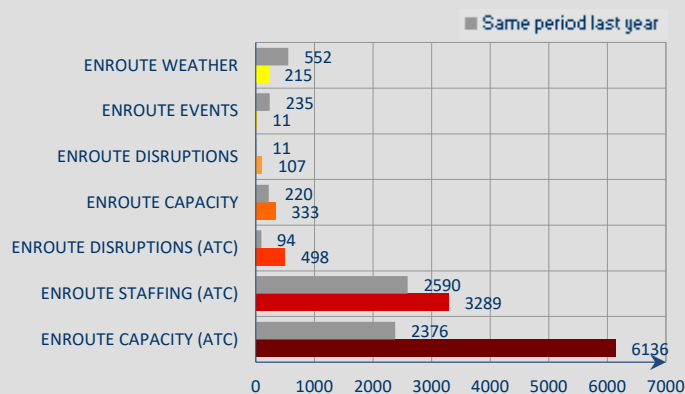


**Reporting month:** The average en-route ATFM delay per flight in the NM area<sup>i</sup> in February was 0.46 min/flt, which is above the corresponding monthly guideline<sup>ii</sup> value of 0.14 min/flt.

**Year To Date:** The average YTD en-route ATFM delay per flight in 2019 in the NM area<sup>i</sup> is 0.41 min/flt which is well above the corresponding guideline of 0.12 min/flt.

ATC capacity delays in Karlsruhe, Marseille, Reims, Canarias, Bremen, Nicosia and Budapest; Delays due to ATC staffing in Karlsruhe, Marseille, Reims, Bremen and Prague ACCs; ATC disruptions in Lisbon ACC; En-route weather in Canarias ACC.

## Year-to-date average daily en-route delays



En-route disruptions, capacity, ATC disruptions, staffing and ATC capacity are above last year's level (YTD), the main contributors are:

- En-route weather* (-61.1%) in Canarias, Bremen, Karlsruhe and London ACCs;
- En-route events* (-95.3%) in Zurich ACC;
- En-route disruptions* (+872.7%) in Amsterdam and London ACCs;
- En-route capacity* (+51.4%) in Karlsruhe, Bremen, Maastricht, Langen and Nicosia ACCs;
- En-route ATC disruption* (+429.8%) in Lisbon, Italian, Brussels and Paris ACCs;
- En-route ATC staffing* (+27.0%) in Karlsruhe, Reims, Marseille, Langen, Maastricht and Prague ACCs;
- En-route ATC capacity* (+158.3%) in Karlsruhe, Reims, Budapest, Canarias and Bremen ACCs.

## NOTICE

### Traffic and Delay Comparisons

All traffic and delay comparisons are between report month and equivalent month of previous year, unless otherwise stated.

### NM Area

All figures presented in this report are for the geographical area that is within Network Manager's responsibility (NM area). For further information on the NM Area go to the Reporting Assumptions and Descriptions document available on the EUROCONTROL website at <http://www.eurocontrol.int/articles/network-operations-monitoring-and-reporting>.

### Regulation Reason Groupings

See Analysis for more information on colour coding. For further information on the NM Area and the regulation reason groupings, go to the Reporting Assumptions and Descriptions document available on the EUROCONTROL website at <http://www.eurocontrol.int/articles/network-operations-monitoring-and-reporting>.

### ATFM Statistics dashboard

More detailed information available via the new **ATFM Statistics dashboard**

© 2019 EUROCONTROL

This document is published by EUROCONTROL in the interests of exchange of information. It may be copied in whole or in part, providing that the copyright notice and disclaimer are included. The information contained in the document may not be modified without prior written permission from EUROCONTROL. EUROCONTROL makes no warranty, either implied or express, for the information contained in this document, neither does it assume any legal liability or responsibility for the accuracy, completeness or usefulness of this information.

Operational Analysis & Reporting,  
Performance, Forecasts and Relations (PFR) Unit,  
Network Manager Directorate (NMD),  
EUROCONTROL,  
96 Rue de la Fusée,  
B - 1130 Brussels

mailto:[nm.ops.perf@eurocontrol.int](mailto:nm.ops.perf@eurocontrol.int)  
<http://www.eurocontrol.int/articles/network-operations-monitoring-and-reporting>

i See Notice on page 4 for more information on NM Area .

ii NM's calculation that provides the guideline en-route delay (min) requirements to achieve the annual target (0.5 min/flight).

iii See notice on page 4 for more information on traffic and delays comparisons.