



All-Causes Delay to Air Transport in Europe

September 2016 – based on preliminary airline data*

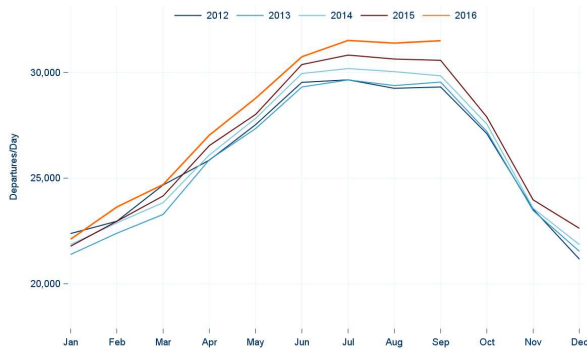
Summary & Significant Events

In September 2016 preliminary data from airlines describing all-causes delay showed that the average delay per delayed flight (ADD) was 26 minutes and the percentage of delayed flights (>=5 minutes) at 42%, both remaining stable when compared to the same month in 2015. Analysing the average delay per flight, airline and reactionary delays fell however ATFM en-route delay increased. Friday 9 September saw the highest number of daily flights in (ESRA08) with 34.010 flights recorded.

The French ATC industrial action between 14 and 15 September generated airport and en-route ATFM delays. The most affected airports were Marseille and Paris Orly. NM estimated there were 900 fewer flights during the action. An emergency landing at London Heathrow on 9 September and a frequency failure in Brussels ACC on 15 September generated ATFM delays at these airports.

Seasonal weather affected Maastricht, Karlsruhe, Marseille, Bordeaux, Barcelona and Scottish ACCs; thunderstorms, heavy rain and/or low visibility impacted London Heathrow, Palma de Mallorca and to a lesser extent, Istanbul Sabiha Gökçen, Istanbul Ataturk, London Gatwick, Barcelona and Zürich airports.

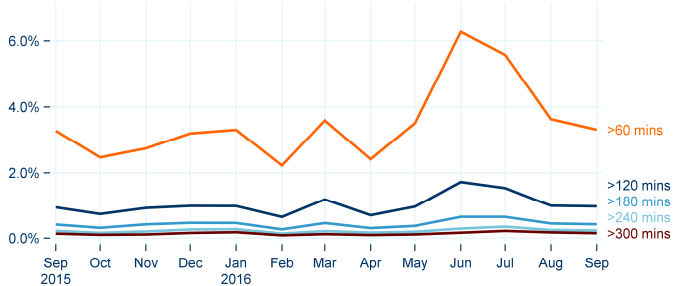
Traffic



In September 2016 daily traffic in the EUROCONTROL Statistical Reference Area (ESRA08) saw an increase of 3% in the number of flights per day compared to September 2015.

Long Departure Delays All-Causes

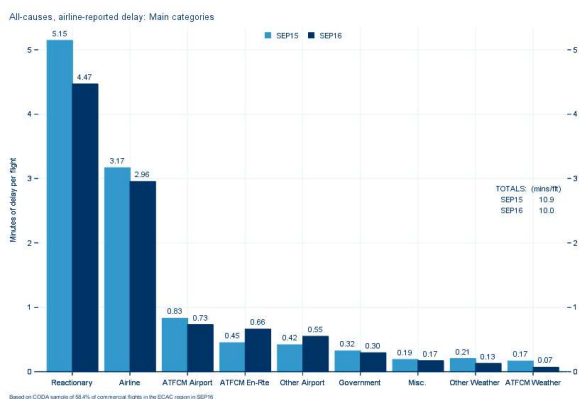
Percentage of Flights Delayed on Departure



©EUROCONTROL 2016 www.eurocontrol.int/CODA

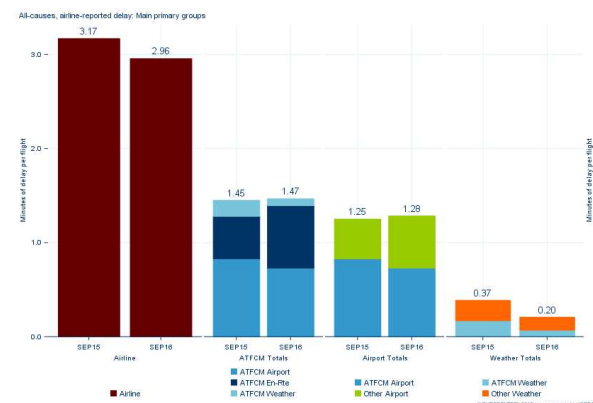
The percentage of flights delayed greater than 60 minutes from all-causes remained stable at 3.3% when compared to September 2015.

Average Delay Per Flight by Delay Cause



The average delay per flight in September 2016 decreased to 10 minutes per flight. Further analysis of the delay reasons shows that reactionary delay decreased by 0.7 minutes per flight. Airline delay fell to 3 minutes per flight. Airline delay fell to 3 minutes per flight.

Primary Delay Groupings



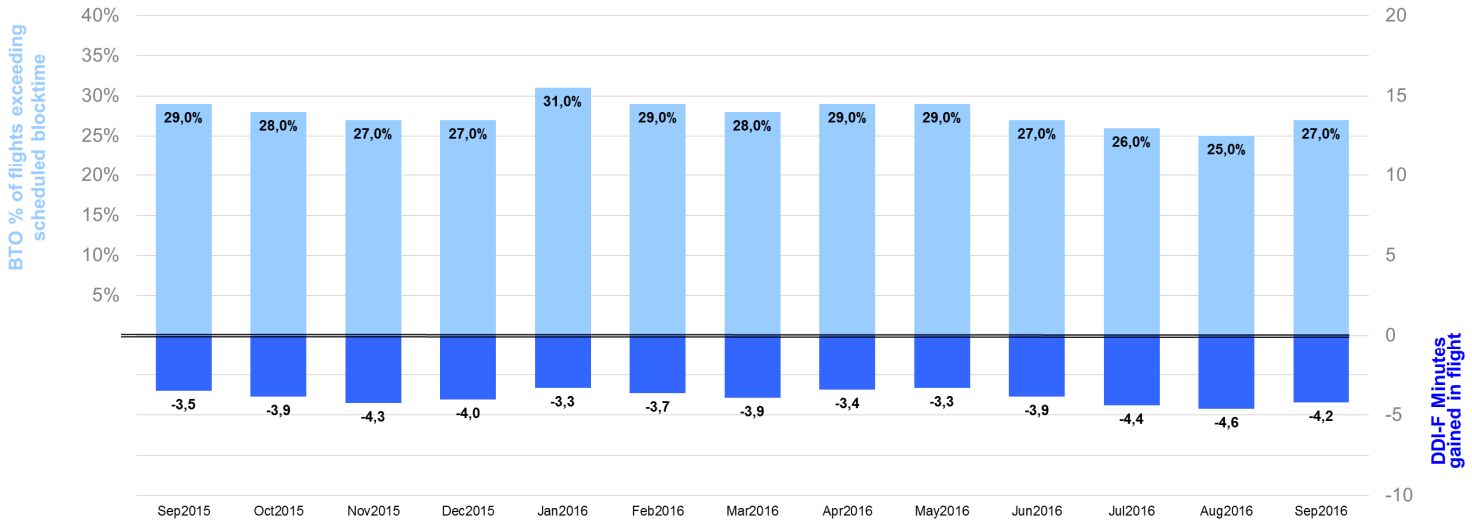
ATFCM delays reported by airlines remained at 1.5 minutes per flight. Both ATFM en-route and ATFM airport delay were 0.7 minutes per flight.

* This CODA report is based on airline data as currently available. Airline data coverage for September 2016 so far is: 58%
Date of publication 28/10/2016

CODA Scheduling Indicators

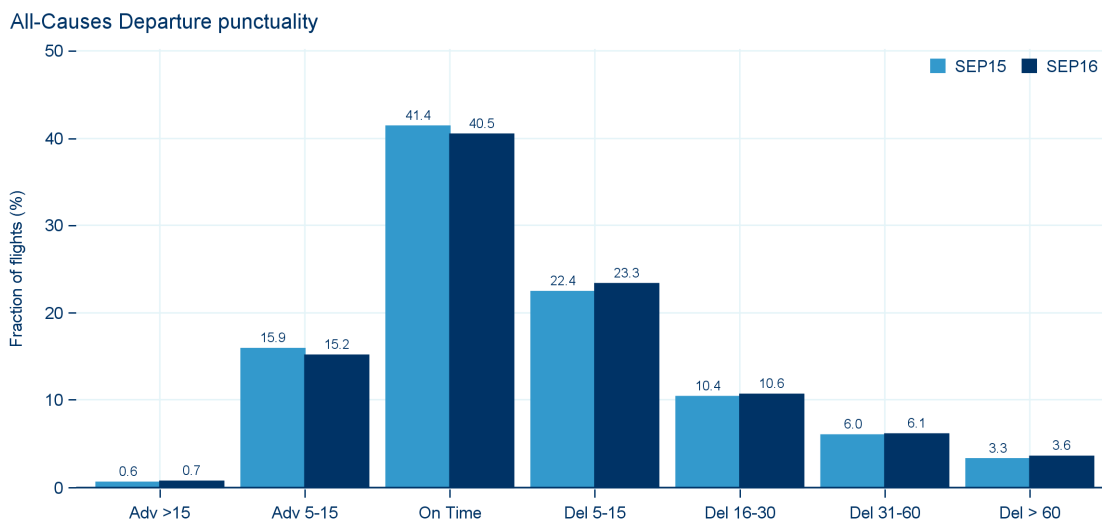
The **Block Time Overshoot (BTO)** or the percentage of flights with an actual block time which exceeds the scheduled block time. In September 2016, the European BTO improved with 27% of flight exceeding their block times compared to a year ago.

The **Delay Difference Indicator - Flight (DDI-F)** or the difference between departure and arrival punctuality expressed in minutes. This can be indicated as a positive or negative figure, for example a flight departing with 20 minutes delay and arriving with 30 minutes arrival delay will have a DDI-F of +10 minutes. The European DDI-F in September 2016 was -4.2 minutes, an increase when compared to September 2015 where the DDI-F was -3.5 minutes.



Distribution of All Flights by Length of Delay (Departure Punctuality)

In September 2016, 79% of flights departed within 15 minutes of their scheduled departure time. 40.5% of flights departed within the 5 minute threshold before or after the scheduled departure time (STD), a decrease of 0.9 percentage points when compared to September 2015. Flights delayed >30 minutes from all-causes increased slightly from 9.3 to 9.7 percentage points when compared to September 2015.

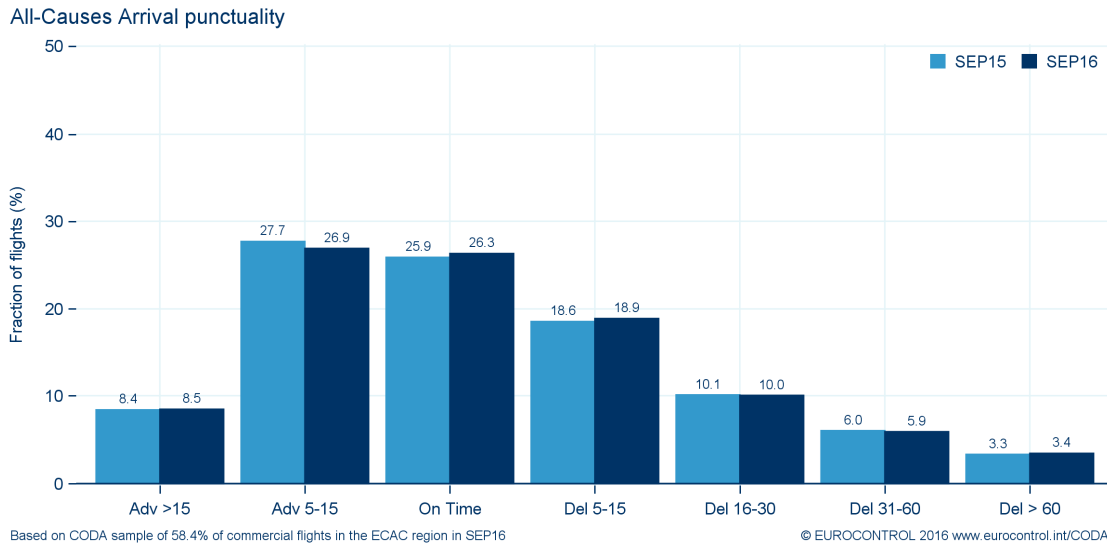


Based on CODA sample of 58.4% of commercial flights in the ECAC region in SEP16

© EUROCONTROL 2016 www.eurocontrol.int/CODA

Distribution of All Flights by Length of Delay (Arrival Punctuality)

Regarding arrival punctuality, 72% of flights arrived within 15 minutes of the scheduled time of arrival time. 26% of flights arrived on time within the 5 minute threshold before or after the scheduled arrival time. Flights arriving >15 minutes ahead of schedule remained at 8.5% when compared to September 2015.



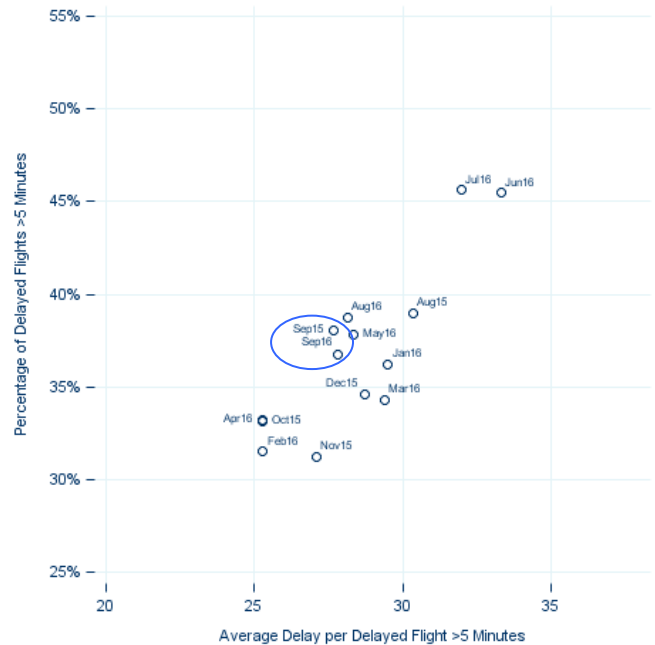
Average Delay per Delayed Flight and Percentage of Delayed Flights Comparison

Departure



In September 2016 the average delay per delayed flight (≥ 5 minutes) on departure was 26 minutes and 42% of flights were delayed on departure, both remaining stable when compared to September 2015.

Arrival



The average delay per delayed flight (≥ 5 minutes) on arrival was 28 minutes, remaining stable when compared to September 2015. 37% of flights were delayed on arrival, a decrease of 1 percentage point when compared to September 2015.