



All-Causes Delay to Air Transport in Europe

June 2018 – based on preliminary airline data*

Summary & Significant Events

Airline-reported ATFM delays increased by 1.4 minutes to 3.8 minutes per flight. ATFM en-route delay was mainly responsible for this increase: it doubled to 2.6 minutes per flight, compared with last year, mainly because of ATC industrial action in France and convective weather.

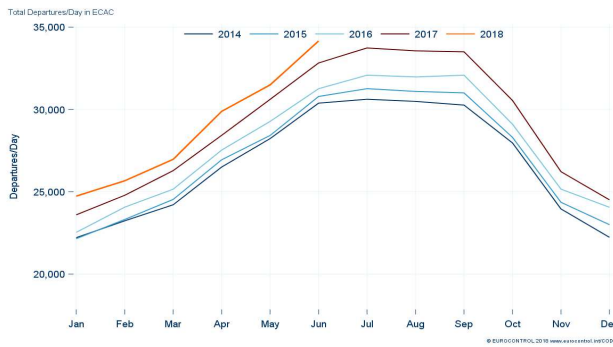
Industrial action held on the weekends at the Marseille ACC on 9-11, 16-18 and 23-25 June as well as the Italian ATC industrial action of 8 June also caused disruption.

The other major delay generator was adverse weather, especially en-route. Thunderstorms affected large areas of North West Europe, especially in Karlsruhe and Maastricht UACs' airspace between 06 and 11 June.

Between 1 and 3 June, convective activity dominated the network, particularly in Germany, France and central Europe. Weather made for delays in Vienna, Karlsruhe, Maastricht, Prague and Brussels ACCs.

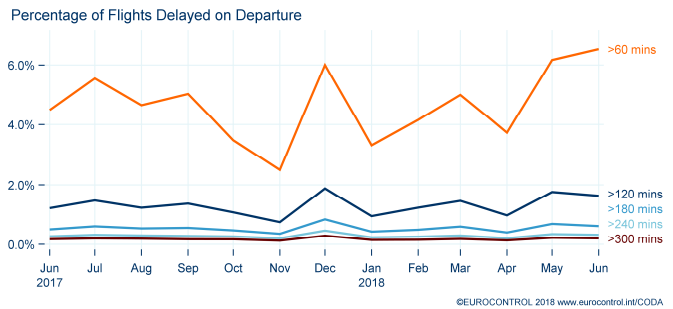
The average delay per delayed flight on departure (ADD) was 32 minutes per flight. In June 2017, it was 28 minutes per flight. The percentage of delayed flights (PDF) (>=5 minutes) on departure was 55%. This represents an increase of 8 percentage points when compared with June 2017. The percentage of delayed flights on arrival increased to 49%, compared with June 2017 when 40% of flights were delayed on arrival.

Traffic



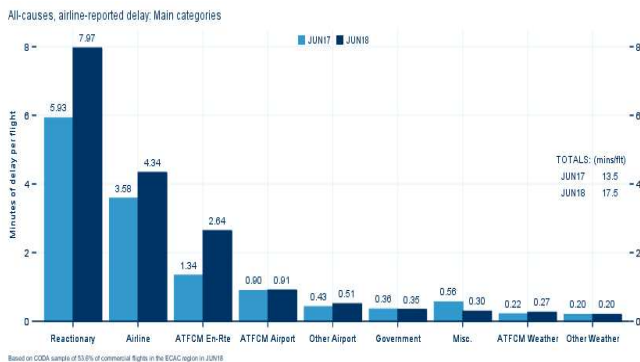
In June 2018, ECAC saw an increase of 4.1% in the number of flights per day compared to June 2017.

Long Departure Delays All-Causes



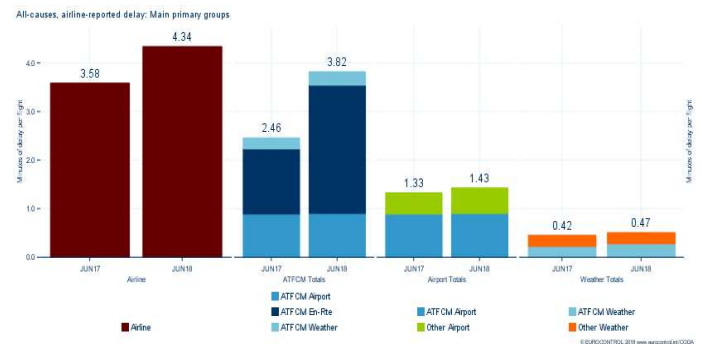
The percentage of delayed flights greater than 60 minutes from all-causes increased from 4.5% to 6.5% when compared to June 2017.

Average Delay per Flight by Delay Cause



The average delay per flight in June 2018 increased by 4 minutes to 17.5 minutes per flight. ATFM en-route delay doubled to 2.6 minutes per flight. The higher shares of en-route delay observed drove reactionary delay for airlines, this increasing to 8 minutes per flight in comparison to 6 minutes in June 2017.

Primary Delay Groupings



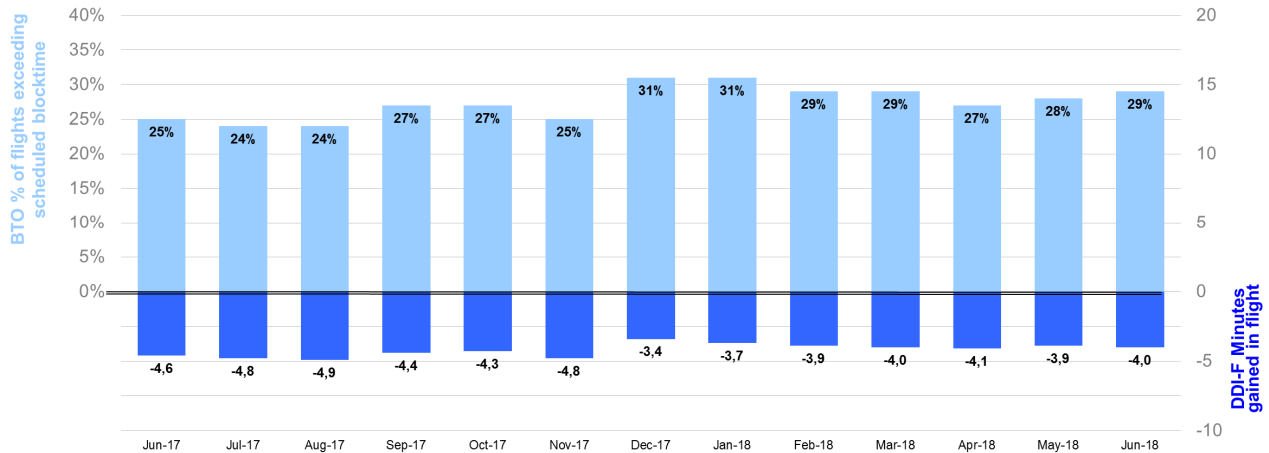
Airline delays increased to 4.3 minutes per flight in June 2018. Grouped ATFM delay as reported by airlines increased by 1.4 minutes to 3.8 minutes per flight. The main contribution to this change came in ATFM en-route delay, this increasing to 2.6 minutes per flight.

* This CODA report is based on airline data as currently available. Airline data coverage for June 2018 so far is: 54%
Date of publication 22/06/2018 Eurocontrol TLP Status: White (Public Information)

CODA Scheduling Indicators

The **Block Time Overshoot (BTO)** or the percentage of flights with an actual block time which exceeds the scheduled block time increased in June 2018 with 29% of flights exceeding their block times compared to a year ago.

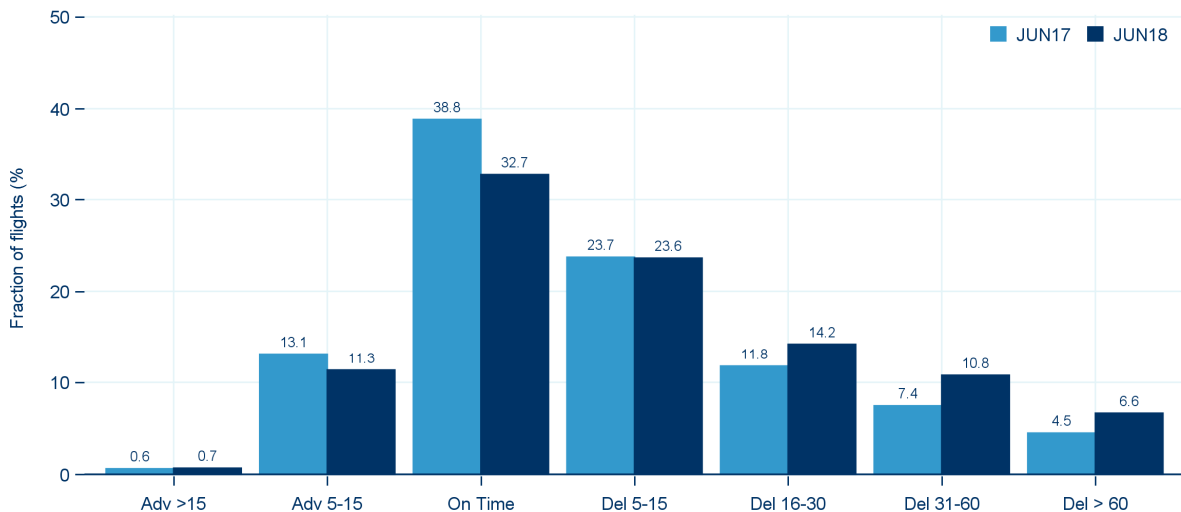
The **Delay Difference Indicator - Flight (DDI-F)** or the difference between departure and arrival punctuality expressed in minutes. This can be indicated as a positive or negative figure, for example a flight departing with 20 minutes delay and arriving with 30 minutes arrival delay will have a DDI-F of +10 minutes. The European DDI-F in June 2018 was -4 minutes.



Distribution of All Flights by Length of Delay (Departure Punctuality)

In June 2018, 32.7% of flights departed within the 5 minute threshold before or after the scheduled departure time (STD), a decrease of 6.0 percentage points in comparison to June 2017. Flights delayed >30 minutes from all-causes increased from 11.9% to 17.4% when compared to June 2017.

All-Causes Departure punctuality



Based on CODA sample of 53.6% of commercial flights in the ECAC region in JUN18

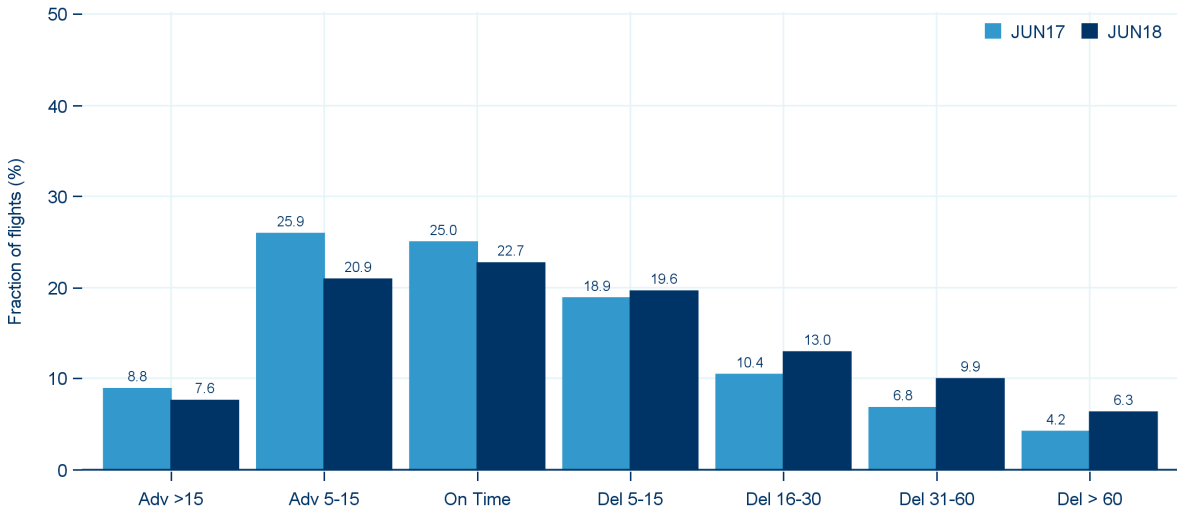
© EUROCONTROL 2018 www.eurocontrol.int/CODA

* This [CODA](#) report is based on airline data as currently available. Airline data coverage for June 2018 so far is: 54%
Date of publication 22/06/2018 Eurocontrol TLP Status: White (Public Information)

Distribution of All Flights by Length of Delay (Arrival Punctuality)

Arrival punctuality decreased with 71% of flights arriving within 15 minutes or earlier of their scheduled time of arrival time compared to 78% in June 2017. Flights delayed >30 minutes from all-causes increased from 11% to 16% when compared to June 2017.

All-Causes Arrival punctuality



Average Delay per Delayed Flight and Percentage of Delayed Flights Comparison

Departure



In June 2018 the average delay per delayed flight (≥ 5 minutes) on departure was 32 minutes, an increase of 4 minutes. 55% of flights were delayed on departure, an increase of 8 percentage points when compared to June 2017.

Arrival



The average delay per delayed flight (≥ 5 minutes) on arrival was 34 minutes, an increase of 4 minutes. 49% of flights were delayed on arrival, an increase of 9 percentage points.

* This [CODA](#) report is based on airline data as currently available. Airline data coverage for June 2018 so far is: 54%
Date of publication 22/06/2018 Eurocontrol TLP Status: White (Public Information)