

# NMIR USER GUIDE

**Edition Number** : 1.0  
**Edition Validity Date** : 27/04/2018

# DOCUMENT CHARACTERISTICS



Document Title	Document Subtitle (optional)	Edition Number	Edition Validity Date
NMIR User Guide	Use pop-up to enter value.	1.0	27/04/2018
<b>Abstract</b>			
<p>This document contains information for new users, the list of NMIR dashboards, their contents in term of available reports and the mapping between the migrated previous NMIR reports and the NMIR dashboards (Annex 1).</p> <p>The process to access the NMIR is also described.</p>			
<b>Author(s)</b>			
<b>Contact Person(s)</b>		<b>Tel/email</b>	<b>Unit</b>
nmir.support@eurocontrol.int			NMD/PFR/FNI/PRISME

<b>STATUS AND ACCESSIBILITY</b>			
<b>Status</b>		<b>Accessible via</b>	
Working Draft	<input type="checkbox"/>	Intranet	<input type="checkbox"/>
Draft	<input type="checkbox"/>	Extranet	<input type="checkbox"/>
Proposed Issue	<input type="checkbox"/>	Internet (www.eurocontrol.int)	<input checked="" type="checkbox"/>
Released Issue	<input checked="" type="checkbox"/>		

<b>TLP STATUS</b>		
<b>Intended for</b>	<b>Detail</b>	
Red	<input type="checkbox"/>	Highly sensitive, non-disclosable information
Amber	<input type="checkbox"/>	Sensitive information with limited disclosure
Green	<input checked="" type="checkbox"/>	Normal business information
White	<input type="checkbox"/>	Public information

©2018 The European Organisation for the Safety of Air Navigation (EUROCONTROL). This document is published by EUROCONTROL for information purposes. It may be copied in whole or in part, provided that EUROCONTROL is mentioned as the source and the extent justified by the non-commercial use (not for sale). The information in this document may not be modified without prior written permission from EUROCONTROL.

## Edition History

The following table records the complete history of the successive editions of the present document.

### Edition History

Edition No.	Edition Validity Date	Author	Reason
1.0	27/04/2018	nmir.support@eurocontrol.int	First version

# Table of Contents

**I**

<b>DOCUMENT CHARACTERISTICS .....</b>	<b>I</b>
<b>EDITION HISTORY .....</b>	<b>II</b>
<b>TABLE OF CONTENTS.....</b>	<b>3</b>
<b>1 INTRODUCTION .....</b>	<b>4</b>
1.1 WHAT IS THE NMIR? .....	4
1.2 WHAT IS THE PURPOSE OF NMIR? .....	4
1.3 HOW DOES NMIR WORK? .....	4
1.4 HOW TO ACCESS THE NMIR? .....	4
1.5 NEW NMIR? .....	4
1.6 ADDITIONAL QUESTIONS? .....	5
<b>2 OVERVIEW DASHBOARD .....</b>	<b>6</b>
<b>3 ASM DASHBOARD .....</b>	<b>7</b>
<b>4 ATFM COMPLIANCE DASHBOARD .....</b>	<b>8</b>
<b>5 ETFMS OPLOG DASHBOARD .....</b>	<b>9</b>
<b>6 FLIGHT DASHBOARD .....</b>	<b>10</b>
<b>7 IFPS DASHBOARD .....</b>	<b>11</b>
<b>8 POST OPS DAILY BRIEFING .....</b>	<b>13</b>
<b>9 REGULATION DASHBOARD .....</b>	<b>14</b>
<b>10 TRAFFIC AND DELAY DASHBOARD .....</b>	<b>15</b>
<b>11 ANNEX 1: MAPPING PREVIOUS NMIR REPORTS/NMIR DASHBOARDS</b>	<b>17</b>
<b>12 ANNEX 2: ‘NEW USER’ PROCEDURE.....</b>	<b>20</b>
<b>13 ANNEX 3: BROWSER CERTIFICATION .....</b>	<b>23</b>
<b>14 ABBREVIATIONS.....</b>	<b>24</b>

# 1 Introduction

## 1.1 What is the NMIR?

The Network Manager Interactive Reporting (NMIR) is a web interface allowing users of NM systems to access a wide range of reports and statistical data on European ATFCM archived data.

## 1.2 What is the purpose of NMIR?

The NMIR has been developed to facilitate the network information sharing with all ATM partners.

It enables users such as Aircraft Operators, ANSPs, States, State Authorities, AIS/ARO and airports to obtain performance and quality indicators, to monitor trends and to compare ATFCM archived data.

## 1.3 How does NMIR work?

By filling in input parameters boxes, individual users can refresh pre-defined dashboards at any time.

The data comes directly from the Network Operations Data warehouse, which contains the NM operational data that are archived the day after operations and stored for 24 months. It also contains the statistics and performance indicators which are computed 2 days after operations.

Some performance data comes also from the PRISME Data warehouse.

## 1.4 How to access the NMIR?

The NMIR service is accessible via a Web browser. Confidentiality and security are guaranteed by a profiled assignment mechanism defining which NMIR dashboard can be accessed by which users.

The secured authentication is done via an OneSky Online login and a submission to the NMIR Dashboards Service.

The submission process is described in the annex 2.

## 1.5 New NMIR?

The platform of the NMIR has recently changed, based previously on Business Objects (BO), the new version is now based on Oracle Business Intelligence Enterprise Edition (OBIEE).

Main used reports from the BO NMIR have been migrated in the new OBIEE NMIR. The list of migrated reports is in Annex 1.

Questions on non-migrated reports are to be addressed to: [nmir.support@eurocontrol.int](mailto:nmir.support@eurocontrol.int).

The change for existing users is not only cosmetic but also organisational; instead of having reports classified in the directory as before, users have access to dashboards which regroup reports of same domain.

The migrated reports are grouped into the following dashboards:

- ASM Dashboard
- ATFM Compliance Dashboard
- ETFMS Dashboard
- Flight Dashboard
- IFPS Dashboard
- Post Ops Daily Briefing Dashboard
- Regulation Dashboard
- Traffic and Delay Dashboard

Previously a 500EUR fee was levied. Access to the NMIR, it is now free of charge.

The change of platform impacts a bit the user experience:

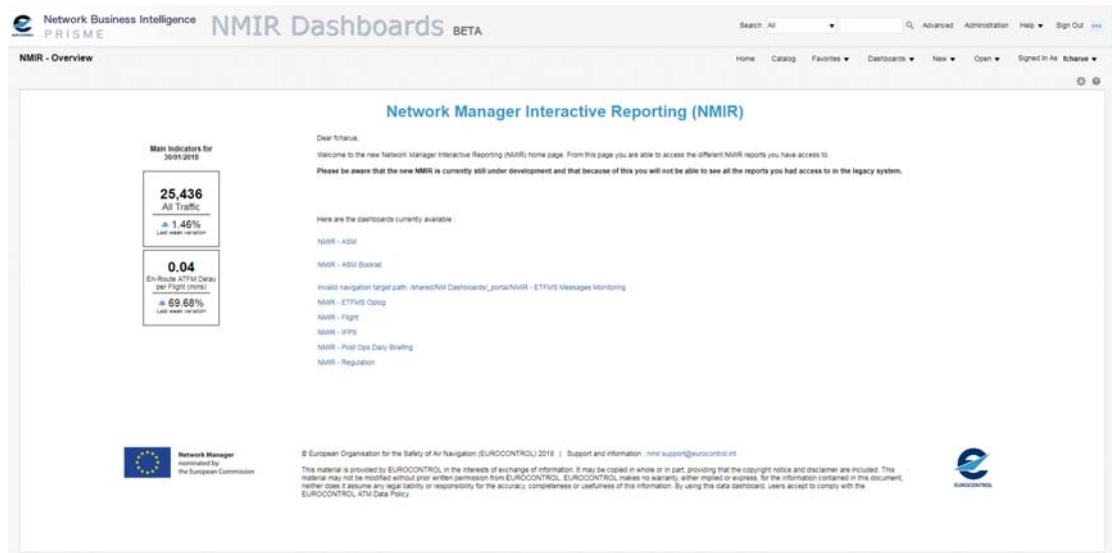
- Export in PDF: The BO NMIR reports were formatted for A4 paper, OBIEE NMIR Dashboards format is HTML and they are therefore formatted for computer screens. The quality of export into PDF format is not guaranteed.
- Export in Excel: Oracle doesn't recommend export of more than 20.000 rows. Indeed a flight list of more than this number doesn't function. A workaround is to export in CSV.

## 1.6 Additional questions?

For further information or assistance in connection with the NMIR Application contact the NMIR Support Team: [nmir.support@eurocontrol.int](mailto:nmir.support@eurocontrol.int).

## 2 Overview Dashboard

### Overview



Network Business Intelligence PRISME NMIR Dashboards BETA

Search All Q Advanced Administration Help Sign Out

NMIR - Overview Home Catalog Favorites Dashboards New Open Signed In As: [User]

### Network Manager Interactive Reporting (NMIR)

Dear User,

Welcome to the new Network Manager Interactive Reporting (NMIR) home page. From this page you are able to access the different NMIR reports you have access to. Please be aware that the new NMIR is currently still under development and that because of this you will not be able to see all the reports you had access to in the legacy system.

Here are the dashboards currently available:

- NMIR - ADSI
- NMIR - ADSI Backup
- Invalid navigation target path: /ntms/nm\_dashboards/\_portal/nmir - ETFSMS Messages Monitoring
- NMIR - ETFSMS Config
- NMIR - Flight
- NMIR - IFRS
- NMIR - Post Ops Daily Briefing
- NMIR - Regulation

© European Organisation for the Safety of Air Navigation (EUROCONTROL) 2016 | Support and information: [nmir.support@eurocontrol.int](mailto:nmir.support@eurocontrol.int)

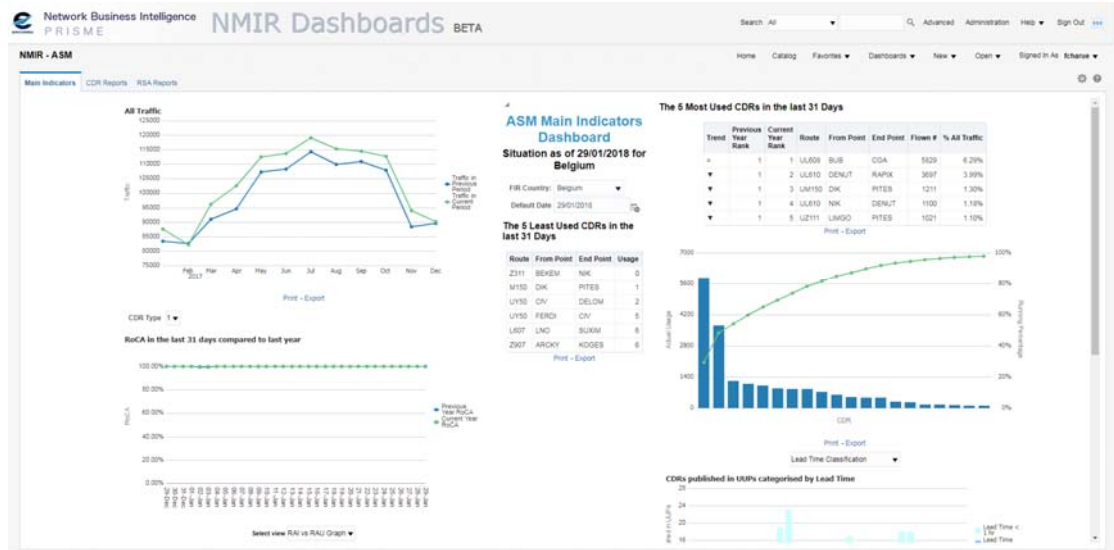
This material is provided by EUROCONTROL in the interests of exchange of information. It may be copied in whole or in part, providing that the copyright notice and disclaimer are included. This material may not be modified without prior written permission from EUROCONTROL. EUROCONTROL makes no warranty, either implied or express, for the information contained in this document, neither does it assume any legal liability or responsibility for the accuracy, completeness or usefulness of this information. By using this data dashboard, users accept to comply with the EUROCONTROL ATM Data Policy.

### Content

This dashboard is the entry point to the NMIR. The users have access to the links of the dashboards available for their profile.

### 3 ASM Dashboard

#### Overview



#### Content

This dashboard is related to the ASM domain.

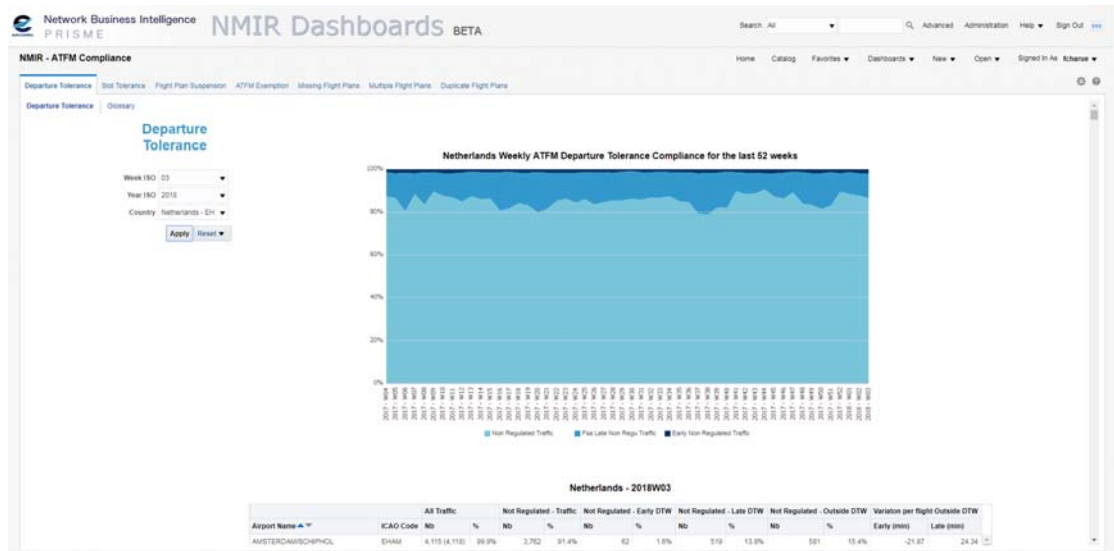
Users can have access to:

- Main indicators of RSAs and CDRs
- CDR Reports
  - Flight usage rate indicators for CDRs
  - Flight economy indicators for CDRs
  - Flight counts graphical representation for CDRs
  - Time window availability for CDRs
  - AUP/UUP details for CDRs
- RSA reports
  - Flight usage rate indicators for RSAs
  - Flight economy indicators for RSAs
  - Flight counts graphical representation for RSAs
  - Time window availability for RSAs
  - RSA definition
  - AUP/UUP details for RSAs
- ASM Booklet



# 4 ATFM Compliance Dashboard

## Overview



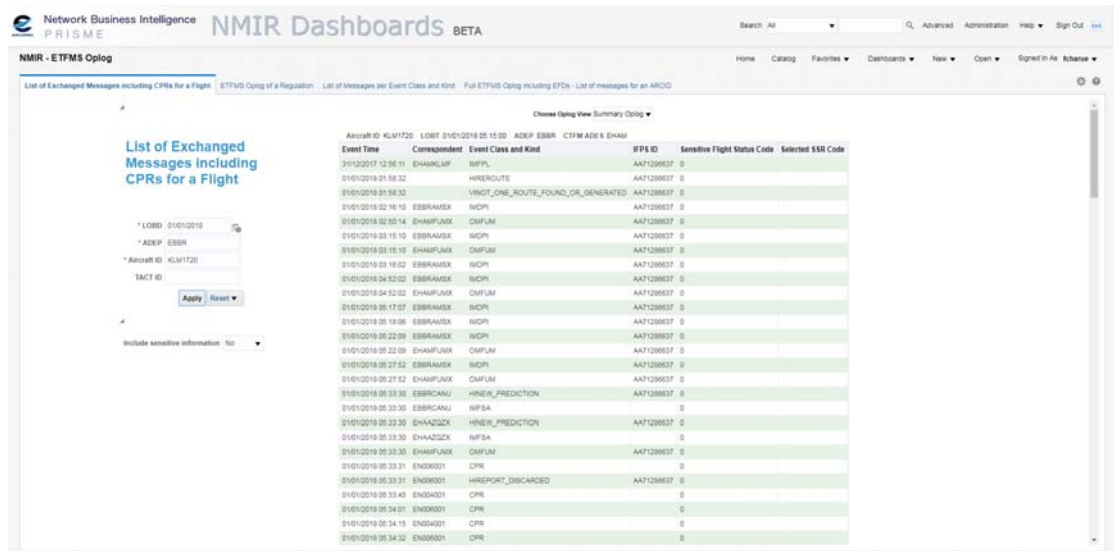
## Content

This dashboard presents weekly statistics per country for the following subjects:

- Departure Tolerance
- Slot Tolerance
- Flight Plan Suspension
- ATFM Exemption
- Missing Flight Plans
- Multiple Flight Plans
- Duplicate Flight Plans

# 5 ETFMS Opllog Dashboard

## Overview



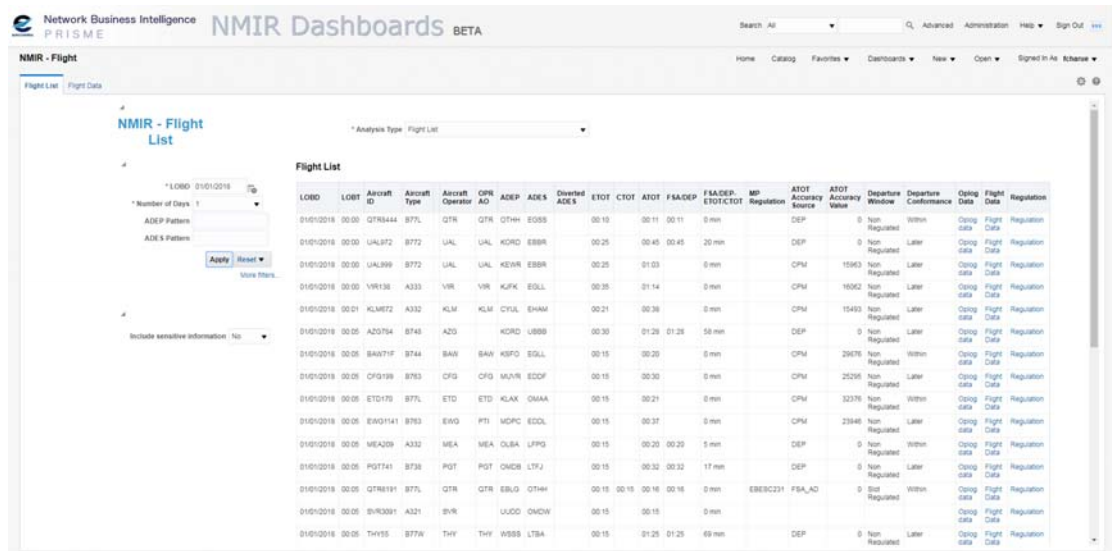
## Content

This dashboard is related to the ETFM domain and shows the following information:

- List of exchanged messages including CPRs for a flight
- ETFMS Opllog of a regulation
- List of messages per event class and kind
- Full ETFMS Opllog including EFDs – List of messages for an ARCID

## 6 Flight Dashboard

### Overview



LOBD	LOBT	Aircraft ID	Aircraft Type	Aircraft Operator	CTR AG	ADEP	ADES	Overlaid ADES	ESTOT	CTOT	ATOT	FALDEP	FALDEP-ETOT/CTOT	MP Regulation	ATOT Accuracy Source	ATOT Accuracy Value	Departure Window	Departure Performance	Oplng Data	Flight Data	Regulation	
01/01/2018	00:00	Q78344	B77L	QTR	QTR	QTHH	EOSS		00:10	00:11	00:11	0 min		DEP	0	Non Regulated	Within		Oplng data	Flight Data	Regulation	
01/01/2018	00:00	UAL972	B772	UAL	UAL	KORD	ESBR		00:25	00:45	00:45	20 min		DEP	0	Non Regulated	Later		Oplng data	Flight Data	Regulation	
01/01/2018	00:00	UAL399	B772	UAL	UAL	KEWR	ESBR		00:25	01:03	01:03	0 min		CPM	15903	Non Regulated	Later		Oplng data	Flight Data	Regulation	
01/01/2018	00:00	VIR138	A333	VIR	VIR	KJFK	EOLL		00:35	01:14	01:14	0 min		CPM	16002	Non Regulated	Later		Oplng data	Flight Data	Regulation	
01/01/2018	00:01	KLM672	A332	KLM	KLM	CVL	EHAM		00:21	00:38	00:38	0 min		CPM	15493	Non Regulated	Later		Oplng data	Flight Data	Regulation	
01/01/2018	00:05	AZ0754	B743	AZ0		KORD	UBBB		00:30	01:29	01:29	58 min		DEP	0	Non Regulated	Later		Oplng data	Flight Data	Regulation	
01/01/2018	00:06	BA0710	B744	BAW	BAW	KSFO	EGLL		00:15	00:20	00:20	0 min		CPM	20676	Non Regulated	Within		Oplng data	Flight Data	Regulation	
01/01/2018	00:08	CFG109	B763	CFG	CFG	MJVR	EDDF		00:15	00:30	00:30	0 min		CPM	25205	Non Regulated	Later		Oplng data	Flight Data	Regulation	
01/01/2018	00:08	ETD170	B77L	ETD	ETD	KLAX	OMAA		00:15	00:21	00:21	0 min		CPM	32376	Non Regulated	Within		Oplng data	Flight Data	Regulation	
01/01/2018	00:08	EAG141	B763	EAG	PTI	MSPC	ECDL		00:15	00:37	00:37	0 min		CPM	23846	Non Regulated	Later		Oplng data	Flight Data	Regulation	
01/01/2018	00:08	MEA209	A332	MEA	MEA	OLBA	LFPD		00:15	00:20	00:20	5 min		DEP	0	Non Regulated	Within		Oplng data	Flight Data	Regulation	
01/01/2018	00:08	PQT741	B738	PQT	PQT	OMBS	LTFJ		00:15	00:32	00:32	17 min		DEP	0	Non Regulated	Later		Oplng data	Flight Data	Regulation	
01/01/2018	00:08	Q78191	B77L	QTR	QTR	ERLQ	QTHH		00:15	00:16	00:16	0 min		EBE9C211	FBA_AD	0	Non Regulated	Within		Oplng data	Flight Data	Regulation
01/01/2018	00:08	BVR0091	A321	BVR		UDDD	OMDN		00:15	00:15	00:15	0 min				0	Non Regulated		Oplng data	Flight Data	Regulation	
01/01/2018	00:08	THV155	B77W	THY	THY	KOSB	LTA		00:15	01:25	01:25	69 min		DEP	0	Non Regulated	Later		Oplng data	Flight Data	Regulation	

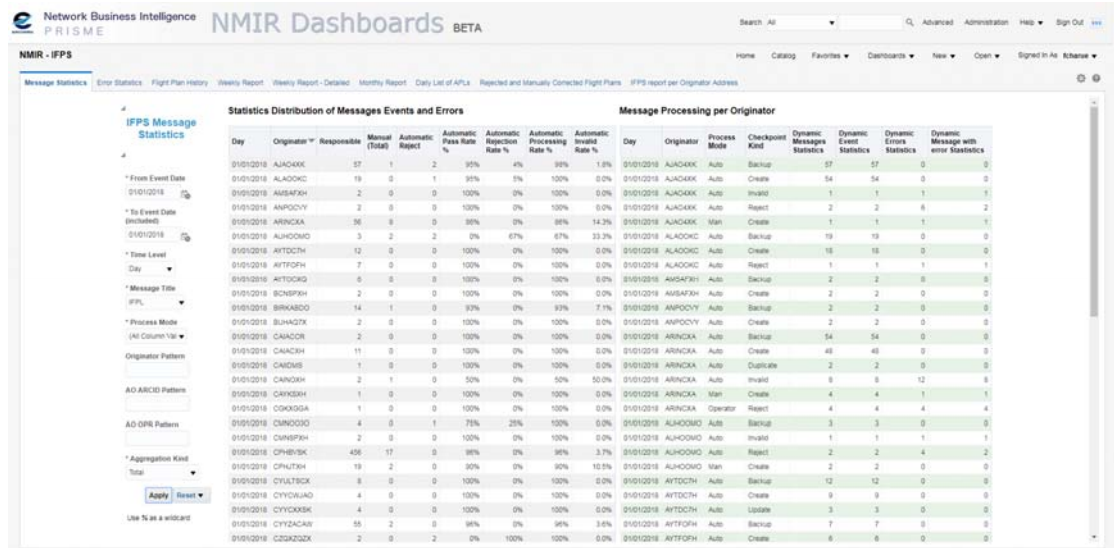
### Content

This dashboard provides several flights list and related flight data:

- Flight list
  - Flight list analysis
  - Flights subject to FAM
  - Exempted Flights
  - City pair flight list via airspace
  - City pair flight list via point
  - City pair flight list via TV
  - Flight list based on delay or registration marking
  - Daily flight list based on MP regulations criteria
- Flight data
  - Basic flight data
  - Airspace profile
  - Point profile
  - TV profile
  - Regulation list

# 7 IFPS Dashboard

## Overview



## Content

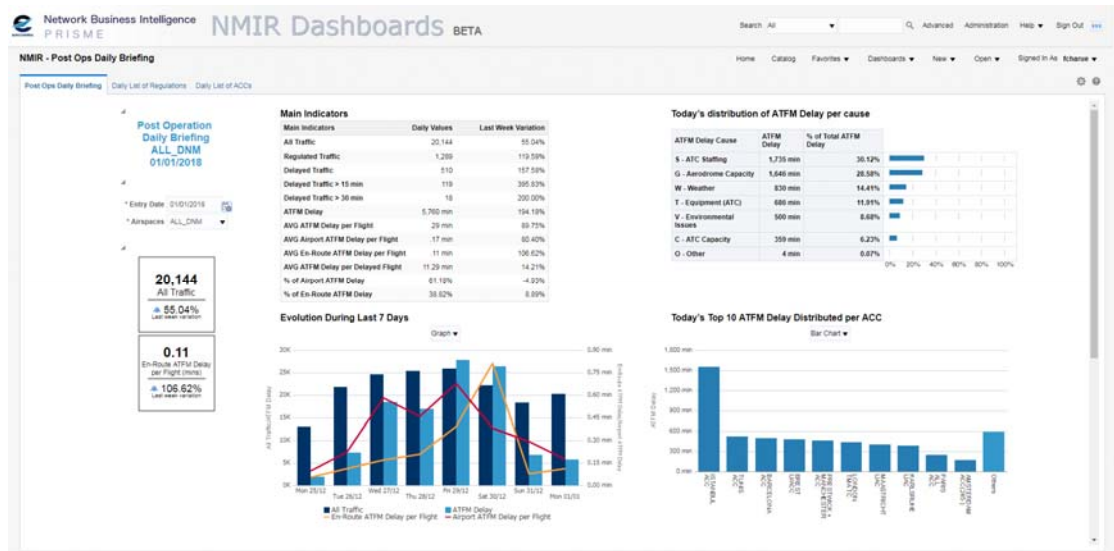
This dashboard is related to the IFPS domain and provides the following information:

- Message statistics
  - Statistics Distribution of Messages Events and Errors
  - Message Processing per Originator
- Error statistics
  - List of errors
  - List of errors per error class
  - Incoming errors name per originator summary
  - List of errors per originator details
  - List of errors per AO OPR
  - List of errors per message title
- Flight plan history
  - Flight plan history
  - Summary flight plan history
- Weekly report
- Weekly report – Detailed
  - IFPS performance
  - Automatic rejection (errors)
  - Systematic rejection catalogue (errors)

- Manual processing: errors on incoming traffic (not included airborne messages)
- Manual processing: errors on incoming traffic (AFP/FNM/MFS)
- Manual processing: message processing results
- Top 20 error names: result of manual message treatment (not including airborne messages)
- Top 20 error names: result of manual message treatment of airborne messages
- Manual processing: ignored error details
- Manual processing: rejected error details
- Error management status
- Error per restriction ID
- Man Proc reasons
- Monthly report
- Daily list of APLs
- Rejected and manually corrected flight plans
  - Statistics
  - Details

# 8 Post Ops Daily Briefing

## Overview



## Content

This dashboard shows different statistics at day + 1:

- Post Ops daily briefing
- Daily list of regulations
- Daily list of ACCs

# 9 Regulation Dashboard

## Overview

The screenshot displays the 'NMIR - Regulation' dashboard. It features a navigation bar with 'Home', 'Catalog', 'Favorites', 'Dashboards', 'New', 'Open', and 'Signed In As: Admin'. Below the navigation, there are tabs for 'List of Regulations', 'List of Regulations with Applied Rates', and 'Regulation Report and Slot List Content'. The main content area is titled 'Daily List of Regulations' and shows a table of regulations for the period '01/01/2018 - 01/01/2018'. The table includes columns for TVS, TV, Regulation, Location, Protected Location Type, Regulation Start/End Dates, Regulation Cancel Status, Regulation Cancel Date, Regulation Activation Date, Regulation Activation Notice, Regulation Duration, Regulation Reason Name, Regulation Window, MP Regulated Traffic, Regulated Traffic, ATM Delay, MP Delayed Traffic, and Avg Delay per Regulated Traffic. The table lists various regulations such as DTTCP, EDUJFMP, EDYVFP, and others, with their respective start and end dates and statuses.

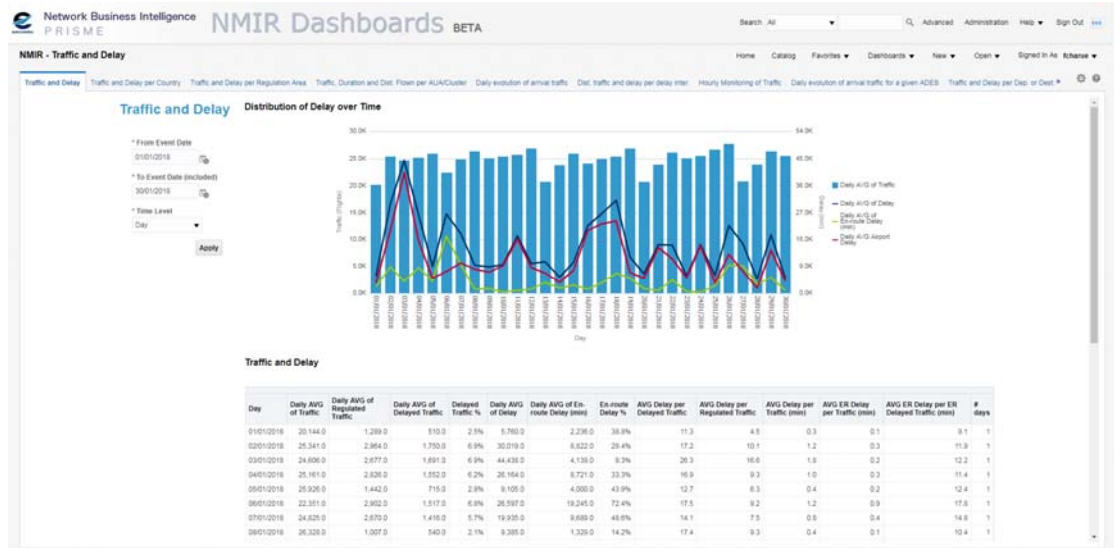
## Content

This dashboard provides information about regulations:

- List of regulations
- List of regulations with applied rates
- Regulation report and slot list content

# 10 Traffic and Delay Dashboard

## Overview



## Content

This dashboard provides different traffic and delay statistics:

- Traffic and Delay
- Traffic and Delay per Country
- Traffic and Delay per Regulation Area
- Traffic, Duration and Distance per AU/Cluster
- Daily evolution of arrival traffic
- Dist. traffic and delay per delay inter.
- Hourly Monitoring of Traffic
  - Hourly Monitoring of Traffic over a Point
  - Hourly Monitoring of Traffic per Aerodrome
  - Hourly Monitoring of Traffic per Airspace
  - Hourly Monitoring of Traffic per Traffic Volume
- Daily evolution of arrival traffic for a given ADES
- Traffic and Delay per ADEP or ADES Area



**INTENTIONALLY BLANK PAGE**

# 11 Annex 1: Mapping previous NMIR reports/NMIR dashboards

X : present in the dashboard - : will be present in the dashboard, not available yet

Migrated Report /Dashboards	ASM Booklet	ASM	ATFM Compliance	ETFMS	Flight	IFPS	Pots Ops Daily Briefing	Regulation	Traffic and Delay
ASM Booklet	X								
ATC Activation - CPRs - List of CPR Syntax Errors	Horizontal Flight Efficiency/ETFM Messages Reporting								
ATC Activation - FSA - DEP - List of flights with significant differences in Reported Time-over of the last received FSA on ADEP and DEP	Horizontal Flight Efficiency/ETFM Messages Reporting								
ATC Activation - List of CPR Messages	Horizontal Flight Efficiency/ETFM Messages Reporting								
ATC Activation - List of logged events during the processing of ATC Incoming Messages with undefined Event Reason	Horizontal Flight Efficiency/ETFM Messages Reporting								
ATC Activation - List of new predictions resulting from significant deviations between received activation messages and ETFMS profiles	Horizontal Flight Efficiency/ETFM Messages Reporting								
ATFM Compliance - Weekly Monitoring			X						
ATFM Departure Slot - List of non compliant ADEPs for a given country of departure	ATFM Statistics/ATFM Compliance								
AUP/UUP Details		X							
CDR Flights List		X							
CDRs Definition		X							
Daily Briefing							X		
Daily Evolution of Arrival Traffic for a given ADES									X
Daily List of Flights According to ADEP, ADES, AO, Entry Day in ECAC and MP Regulations Criteria					X				
Daily List of Regulations								X	
Daily Slot Adherence to ATFM Slots per ADEP					X				
Daily Traffic and Delay per Regulation								X	
Distribution of Traffic and Delay per Delay Intervals									X
ETFMS Oplog - List of Exchanged Messages for a Flight				X					
ETFMS Oplog - List of Messages per Event Class and Kind				X					
ETFMS Oplog of a Regulation				X					
Flight Data					X				
Flight List					X				
From ADEP - Via Airspace - To ADES					X				
From ADEP - Via Point - To ADES					X				
From ADEP - Via TV - To ADES					X				
FSA - DEP - Monitoring of deviations between the Reported Time-over of the last received FSA on	Horizontal Flight Efficiency/ETFM Messages Reporting								

<b>Migrated Report /Dashboards</b>	<b>ASM Booklet</b>	<b>ASM</b>	<b>ATFM Compliance</b>	<b>ETFMS</b>	<b>Flight</b>	<b>IFPS</b>	<b>Pots Ops Daily Briefing</b>	<b>Regulation</b>	<b>Traffic and Delay</b>
ADEP									
FSA - Monitoring of deviations between Time of Reception and Reported Time-over	Horizontal Flight Efficiency/ETFMS Messages Reporting								
FUA Monitoring Indicators for CDRs		X							
FUA Monitoring Indicators for RSAs		X							
Full ETFMS Olog including EFDs - List of Exchanged Messages for a given ARCID				X					
Hourly Monitoring of Traffic over a Point									-
Hourly Monitoring of Traffic per Aerodrome									-
Hourly Monitoring of Traffic per Airspace									-
Hourly Monitoring of Traffic per TV									-
IFPS Error Statistics						X			
IFPS Messages Statistics						X			
IFPS Olog - Flight Plan History						X			
List of Exempted Flights for a Country of Departure					X				
List of Flights Subject to FAM					X				
Monthly Evolution of Departure Traffic Delay and Departure Compliance	ATFM Statistics/ATFM Compliance								
NM IFPS Monthly Report						X			
NM IFPS Weekly Report						X			
Overdeliveries Counts per Regulation								X	
Post Ops Daily Briefing							X		
Regulation Report								X	
Regulation Report and Slot List Content								X	
Regulation Slot List								X	
Regulations Counts Evolution								X	
RSA Definitions in FRA		X							
RSA Flights List		X							
Selection of Flights Using ADEP - ADES - ARCID - AO - A/C - Delay Criteria or Registration Marking					X				
Time Window of Availability for CDRs		X							
Time Window of Availability for RSAs		X							
Traffic and Delay									X
Traffic and Delay per Country									X
Traffic and Delay per Departure or Destination Area in ECAC									X
Traffic per Regulation and AUA Area									X
1	27 /0 4/ 20 18	[fre e text ]	[fre e text ]						
1.0	27	[fre	[fre						

<b>Migrated Report /Dashboards</b>	<b>ASM Booklet</b>	<b>ASM</b>	<b>ATFM Compliance</b>	<b>ETFMS</b>	<b>Flight</b>	<b>IFPS</b>	<b>Pots Ops Daily Briefing</b>	<b>Regulation</b>	<b>Traffic and Delay</b>
	/04/2018	[text]	[text]						
1.0	27/04/2018	[free text]	[free text]						

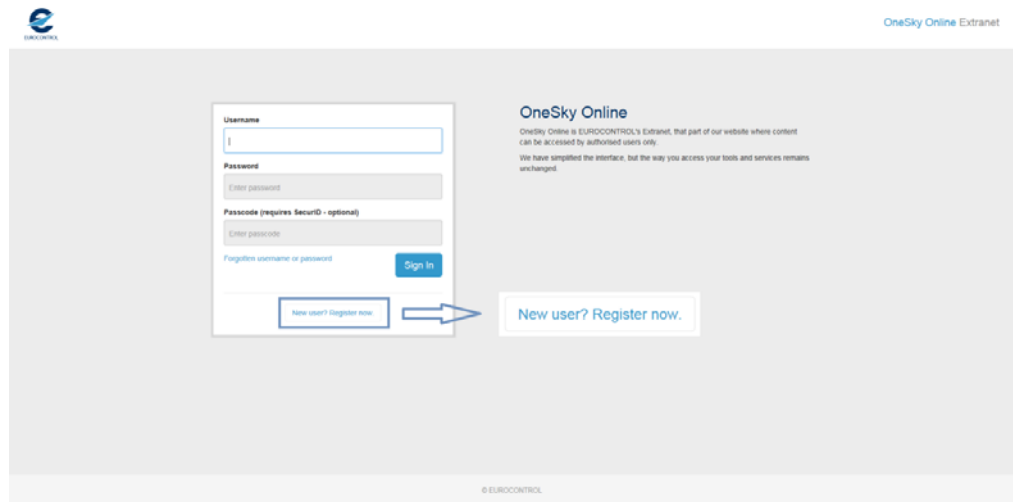
ATFM Statistics/ATFM Compliance and Horizontal Flight Efficiency/ETFMS Messages Reporting are dashboards not included in the NMIR.

## 12 Annex 2: 'New User' procedure

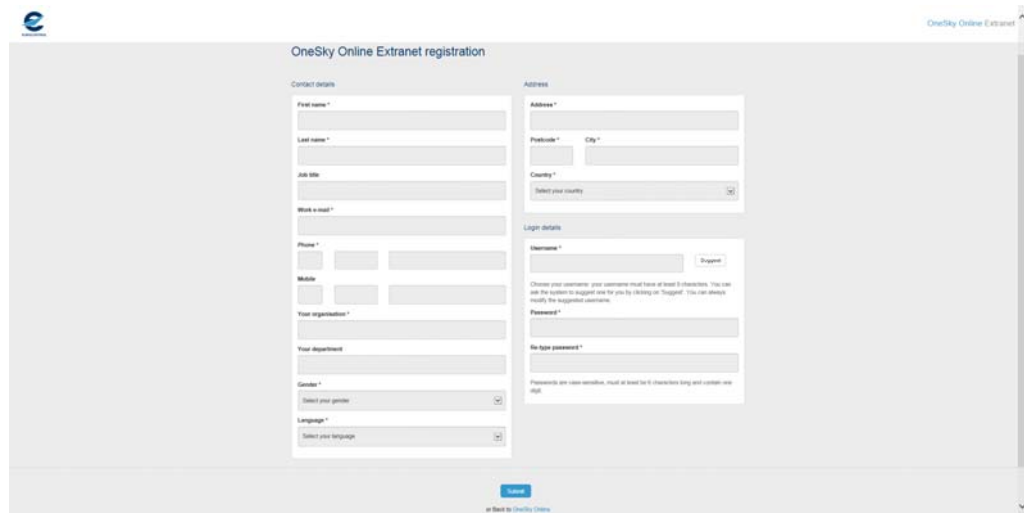
A new user requesting an access to the NMIR under OBIEE must have an OneSky Online account.

To get an Onesky Online account:

- Go to <https://ext.eurocontrol.int>.



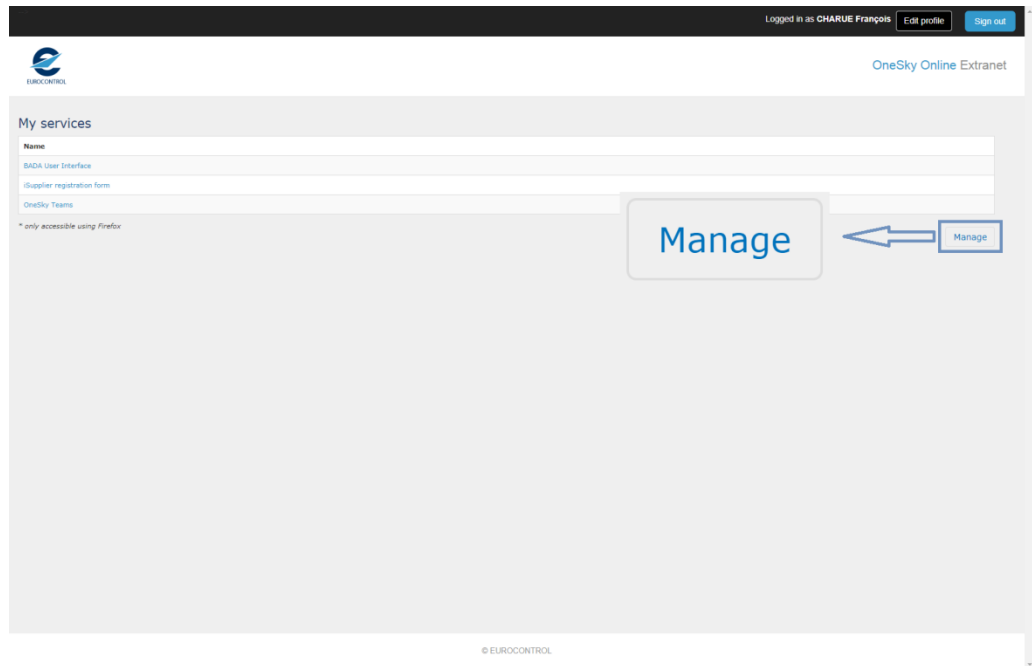
- Click on the <New user? Register Now.> button to access the registration form.



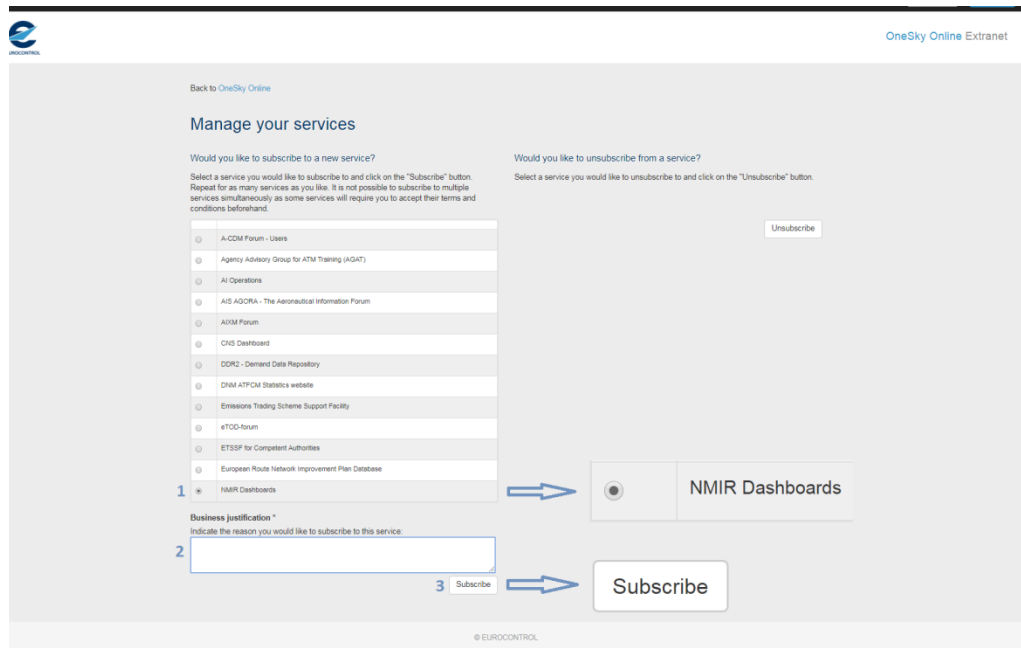
- Complete the form and submit your request.

To get access to the NMIR:

- After validation of the Onesky request and approval of it, the user can now subscribe to the 'NMIR Dashboards' service.
- After connection to Onesky Online, the user has to click on the 'Manage' button.



And select 'NMIR Dashboards' service (1), indicate the reason of the request (2) and click on the 'Subscribe' button (3)



- The user will be contacted later by mail to validate his request.
- If the validation is positive the access will be provided and the user will receive a mail of confirmation.

Only operational users (AO, Airports, ANSPs etc.) will be granted access to the new NMIR and only for operational use.

Potential users wishing to use the new NMIR for statistics and reporting outside an operational use will be granted access.

## 13 Annex 3: Browser certification

Oracle Fusion Middleware 12c (12.2.1.0.0) Products:

Oracle Business Intelligence Enterprise Edition (Oracle BI Server and Admin (BI Server, BI Administration Tool), Oracle Business Intelligence Publisher (BIP Enterprise, BIP Desktop Tools, BIP Scheduler), Oracle BI Presentation Services (Interactive Dashboards, Scorecard and Strategy Management, Catalog Manager, Answers, Composer, Delivers, Search))

Release	Browser Vendor	Browser Version	Exceptions and Additional Information
FMW 12.2.1.0.0	Microsoft Edge	25.*	Oracle BI Publisher not Supported.
FMW 12.2.1.0.0	Microsoft Internet Explorer	11.*	1. Browser support is no longer based on Operating Systems but strictly tied to the browser themselves, no matter which Operating Systems they are installed on.
FMW 12.2.1.0.0	Google Chrome	45+	1. Browser support is no longer based on Operating Systems but strictly tied to the browser themselves, no matter which Operating Systems they are installed on.
FMW 12.2.1.0.0	Mozilla Firefox	31+	1. Browser support is no longer based on Operating Systems but strictly tied to the browser themselves, no matter which Operating Systems they are installed on.
FMW 12.2.1.0.0	Apple Safari	8.*	1. Browser support is no longer based on Operating Systems but strictly tied to the browser themselves, no matter which Operating Systems they are installed on. 2. For SOA support on Safari 8.*, refer to 'Safari Browser - Links tab missing and Decision Properties Overlaps with Actions' and '[SAFARI] 2ND RIGHT CLICK OPTION IS NOT WORKING IN LHN' in the 'Known Issues for Oracle SOA Products and Oracle BPM Products for 12c Release 1 (12.2.1.0.0)' documentation -> <a href="http://www.oracle.com/technetwork/middleware/soasuite/documentation/soaknown-2644661.html">http://www.oracle.com/technetwork/middleware/soasuite/documentation/soaknown-2644661.html</a>
FMW 12.2.1.0.0	Apple Safari	10.*	1. Browser support is no longer based on Operating Systems but strictly tied to the browser themselves, no matter which Operating Systems they are installed on. 2. For SOA support on Safari 8.* and Safari 10.*, refer to 'Safari Browser - Links tab missing and Decision Properties Overlaps with Actions' and '[SAFARI] 2ND RIGHT CLICK OPTION IS NOT WORKING IN LHN' in the 'Known Issues for Oracle SOA Products and Oracle BPM Products for 12c Release 1 (12.2.1.0.0)' documentation -> <a href="http://www.oracle.com/technetwork/middleware/soasuite/documentation/soaknown-2644661.html">http://www.oracle.com/technetwork/middleware/soasuite/documentation/soaknown-2644661.html</a>



## 14 ABBREVIATIONS

Abbreviations and acronyms used in this document are available in the EUROCONTROL Air Navigation Inter-site Acronym List (AIRIAL) which may be found here:

<http://www.eurocontrol.int/airial/definitionListInit.do?skipLogon=true&glossaryUid=AIRIAL>

**DOCUMENT FINAL PAGE**