



Week Summary

Traffic: 35,332 daily flights

-0.3% vs previous week

+4% vs 2024

+3% vs 2019

Busiest Saturday and Sunday on record

Air traffic flow management (ATFM) delays: 3.0 min/flight

(2.3 en-route / 0.7 airport)

-36% vs the previous week

-16% vs 2024

Arrival punctuality: 75%

+6.8pp vs the previous week

+4.8pp vs 2024

Traffic: During Week 32, there were 35,332 daily flights, slightly below the previous week, +4% vs 2024, and +3% vs 2019 levels. Daily network records for a Saturday and a Sunday were set on both weekend days of Week 32, with 33,987 flights recorded on Saturday 9 August 2025 and 35,009 flights recorded on Sunday 10 August 2025 (the busiest network day for reference remains a Friday in 2019, when 37,228 flights were recorded). In Austria, the Czech Republic, Hungary, Romania, Bulgaria and Türkiye, during Week 32 traffic was more than 10% higher vs 2024.

ATFM delays: Averaged 3.0 minutes per flight – a 36% decrease vs the previous week, and 16% lower than in 2024. A total of 52,184 flights were delayed by air traffic flow management (ATFM) restrictions, an average of 7,455 flights a day and 21% of all flights.

Arrival punctuality: Up 6.8 percentage points vs Week 31 to 75%, and better than last year by 4.8 percentage points.

Network hot spots:

- France (26% of all delays in the network): Affected by ongoing capacity and staffing issues.
- Greece (16% of all delays in the network): Affected mostly by staffing issues and weather.
- Spain (13% of all delays in the network): Affected by capacity issues related to high demand.

Network Operations Plan (NOP) delivery:

- With 3.9% year-to-date traffic growth, en-route ATFM delay so far is 24% better than 2024, with enhanced delivery by all air navigation service providers (ANSPs) in South-East Europe, Central Europe, Italy and Switzerland.
- Most ANSPs are delivering the agreed capacity.
- However, Marseille ACC and Beograd ACC did not fully provide the capacity planned in the NOP (generating respectively 98K and 41K delay minutes).

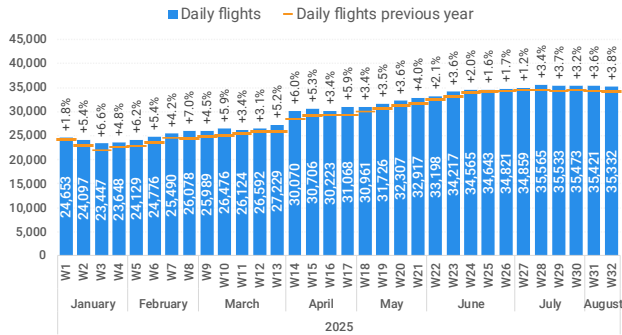
Actions to be taken: Brest, Marseille, Reims and Beograd ACCs will need to revise their plans to align with the NOP for the upcoming weeks. The implementation of capacity management scenarios by EUROCONTROL's Network Manager Operations Centre (NMOC) will be further amplified and, in this context, the proactive support of all ANSPs will be further requested.

Weather: There were no major weather events in the network during Week 32. Regarding more local network events, the scenarios pre-agreed between the ANSPs and the EUROCONTROL Network Manager, moving traffic away from areas of forecasted convective weather, saved 9K minutes of delay on the only applicable day, Monday 4th, 8% of the total weather delay in Week 32, with a further 1K minutes saved on the scenarios purely based around capacity shortfall.

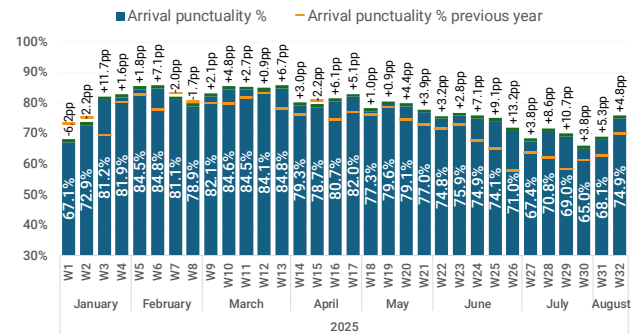


Network

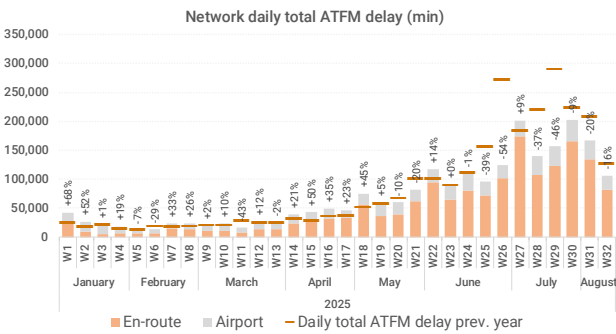
Traffic



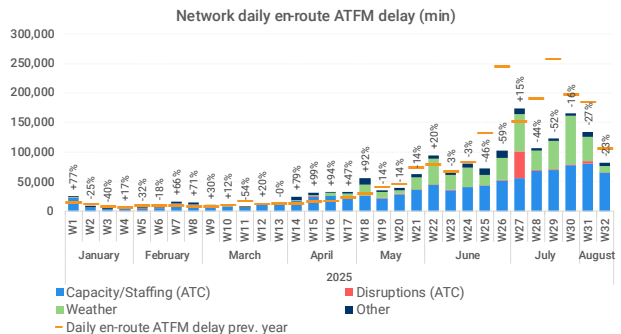
Punctuality (On Time Performance 15')



Total ATFM delay



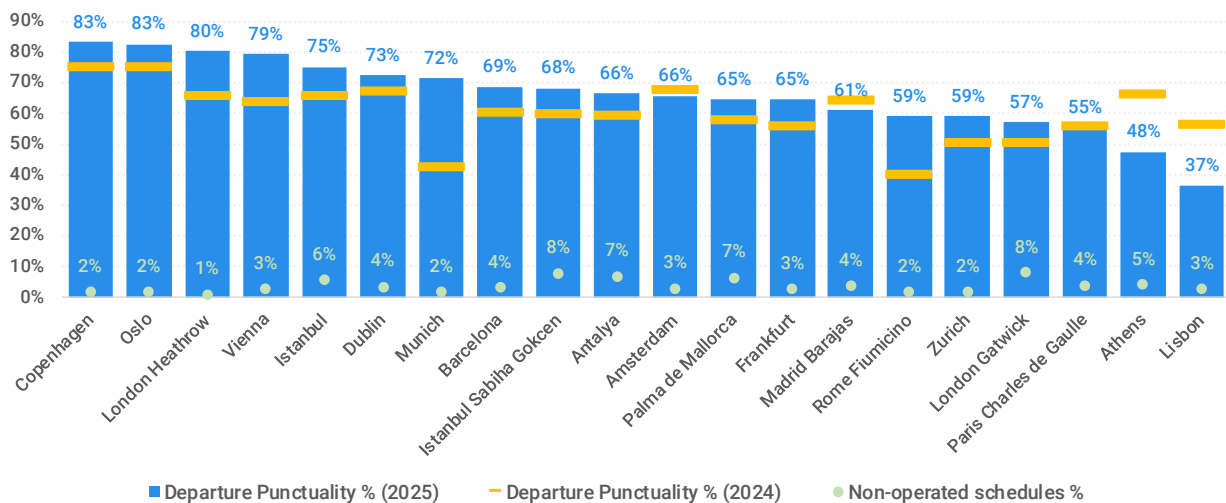
En-route ATFM delay



Airports

Departure punctuality for the top 20 busiest airports in the network.

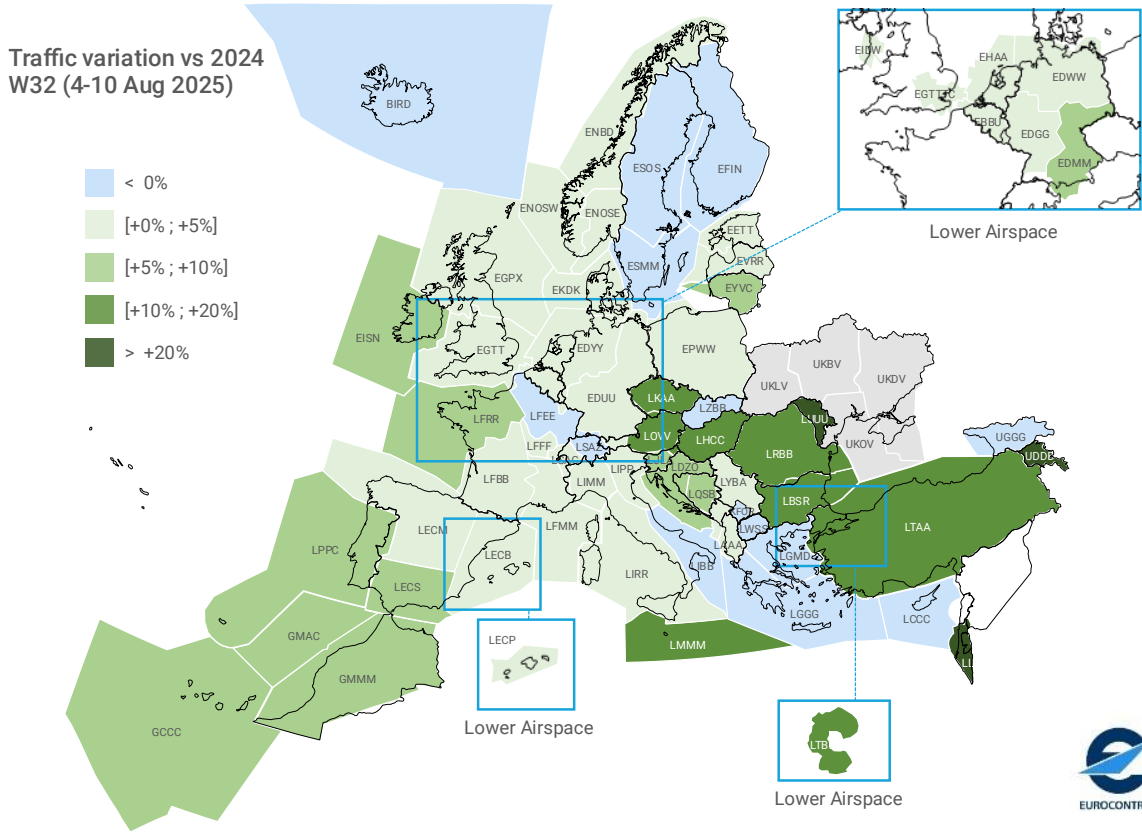
Departure Punctuality % and Non -Operated Schedules % of top 20 European airports W32 (4 - 10 Aug 2025) vs same operational week of 2024



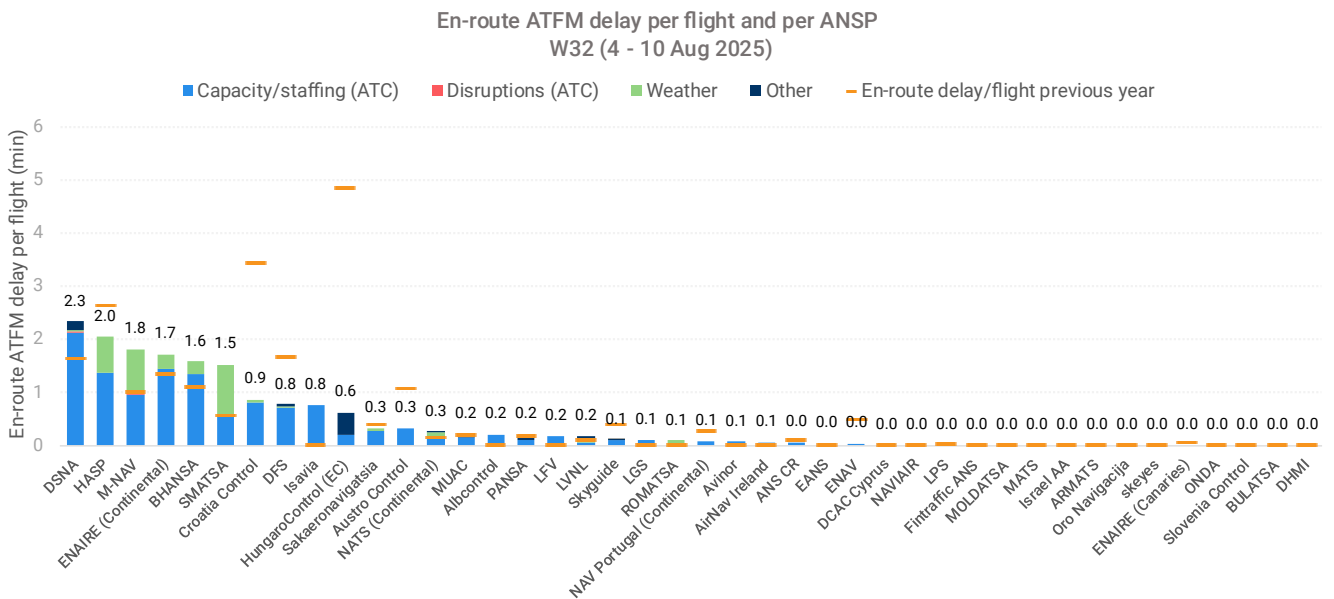
* Non-operated schedules defined @ <https://ansperformance.eu/definition/opschedules/>

Air Navigation Service Providers (ANSPs)

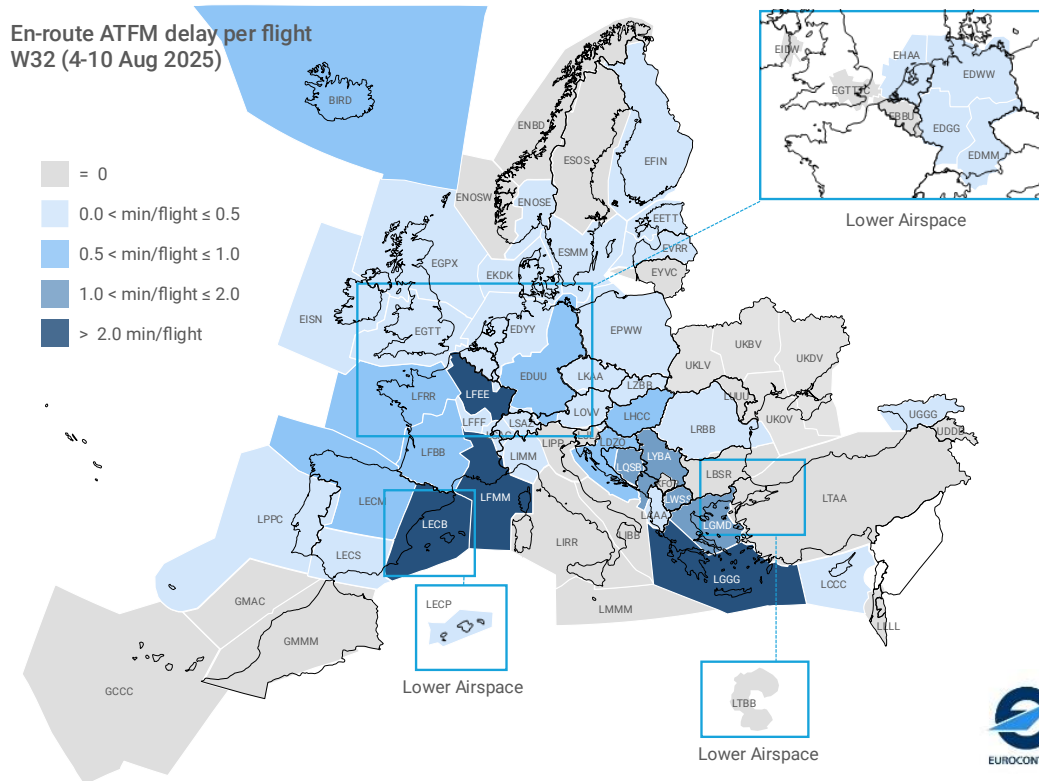
Traffic



En-route ATFM delay per flight and per ANSP



En-route ATFM delay per flight and per ACC



Adherence to the Network Operations Plan (NOP)

The table below represents the EUROCONTROL Network Manager's assessment of the planned sector openings per ACC compared to the commitments in the NOP. It covers the expected situation over the 8 coming weeks.

ACCs that according to current plans will deliver sector openings agreed in the NOP 2025/26-2029:

- Wien
- Bosnia-Herzegovina
- Zagreb
- Nicosia
- Maastricht
- Brest (except 18, 23, 25 August)
- Marseille (except 16-18 and 20-21 September)
- Reims (except Fridays as from 29 August)
- Bremen
- Karlsruhe
- Athinai / Makedonia
- Budapest
- Bucuresti
- Sofia
- Skopje
- Lisboa
- Barcelona
- Madrid
- Zurich
- London

ACCs that according to current plans will not deliver sector openings agreed in the NOP 2025/26-2029:

- Reims: Fridays from 29 August
- Brest: 18, 23, 25 August
- Marseille: 16-18 and 20-21 September
- Belgrade: Weekdays in the second part of August



Aircraft operators

Arrival punctuality and the three most penalising ATFM locations for the 20 busiest aircraft operators*.

Rotation: All		Period: W32 (4 to 10 Aug 2025)			
Aircraft operator	Arrival punct (OTP15)	ATFM delay / flight (min)	Most penalising location (ATFM)	2nd most penalising location (ATFM)	3rd most penalising location (ATFM)
Austrian Airlines	89%	2.25	Belgrade ACC - 12%	Karlsruhe UAC - 10%	Vienna ACC - 9%
Vueling	89%	2.34	Marseille ACC - 22%	Barcelona ACC - 22%	Barcelona Airport - 6%
SAS Group	88%	1.72	Chania Airport - 13%	Athens ACC - 8%	Barcelona ACC - 8%
Iberia Group	85%	2.96	Barcelona ACC - 35%	Marseille ACC - 18%	Madrid ACC - 12%
Norwegian Group	82%	2.52	Marseille ACC - 11%	Barcelona ACC - 10%	Brest ACC - 9%
British Airways Group	81%	2.63	Reims ACC - 17%	Marseille ACC - 10%	Karlsruhe UAC - 7%
Lufthansa Airlines	81%	2.08	Langen ACC - 14%	Marseille ACC - 12%	Munich ACC - 10%
Turkish Airlines Group	79%	1.45	Belgrade ACC - 21%	Budapest ACC - 9%	Karlsruhe UAC - 7%
SWISS Group	79%	3.39	Zurich Airport - 33%	Marseille ACC - 14%	Reims ACC - 7%
ITA Airways	77%	1.41	Marseille ACC - 21%	Athens ACC - 14%	Barcelona ACC - 11%
Wizz Air Group	77%	3.72	Belgrade ACC - 17%	Marseille ACC - 11%	Barcelona ACC - 10%
Air France Group	77%	2.77	Marseille ACC - 23%	Barcelona ACC - 8%	Reims ACC - 6%
Pegasus	77%	1.86	Belgrade ACC - 20%	Budapest ACC - 15%	Antalya Airport - 14%
KLM Group	75%	4.27	Amsterdam Airport - 48%	Reims ACC - 10%	Amsterdam ACC - 4%
TUI Group	74%	5.91	Athens ACC - 16%	Reims ACC - 12%	Barcelona ACC - 7%
Ryanair Group	72%	3.49	Barcelona ACC - 17%	Marseille ACC - 15%	Reims ACC - 6%
easyJet Group	71%	5.32	Marseille ACC - 22%	Reims ACC - 12%	Barcelona ACC - 7%
Eurowings Group	69%	5.13	Marseille ACC - 18%	Karlsruhe UAC - 10%	Reims ACC - 10%
AEGEAN Group	59%	4.42	Athens Airport - 38%	Athens ACC - 13%	Makedonia ACC - 9%
TAP Group	53%	4.51	Lisbon Airport - 19%	Madrid ACC - 15%	Marseille ACC - 13%

* Aircraft operator groups in the table above are defined @ <https://www.eurocontrol.int/directory/airline-groups-lookup>

