



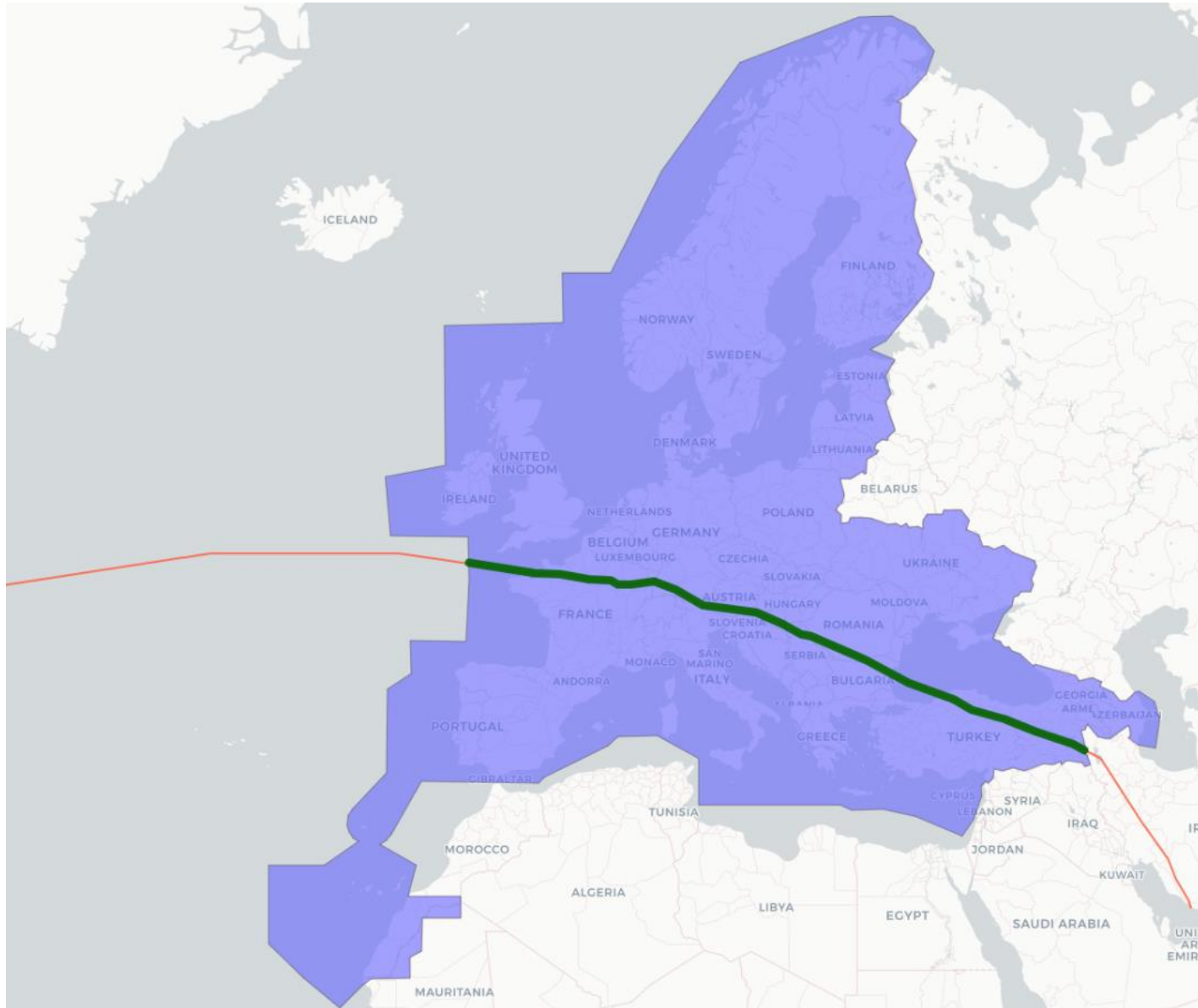
SUPPORTING
EUROPEAN
AVIATION

Disciplined Flight Plan Execution

Chris Peregrine
01/02/2024



Some Numbers: During a busy week last summer

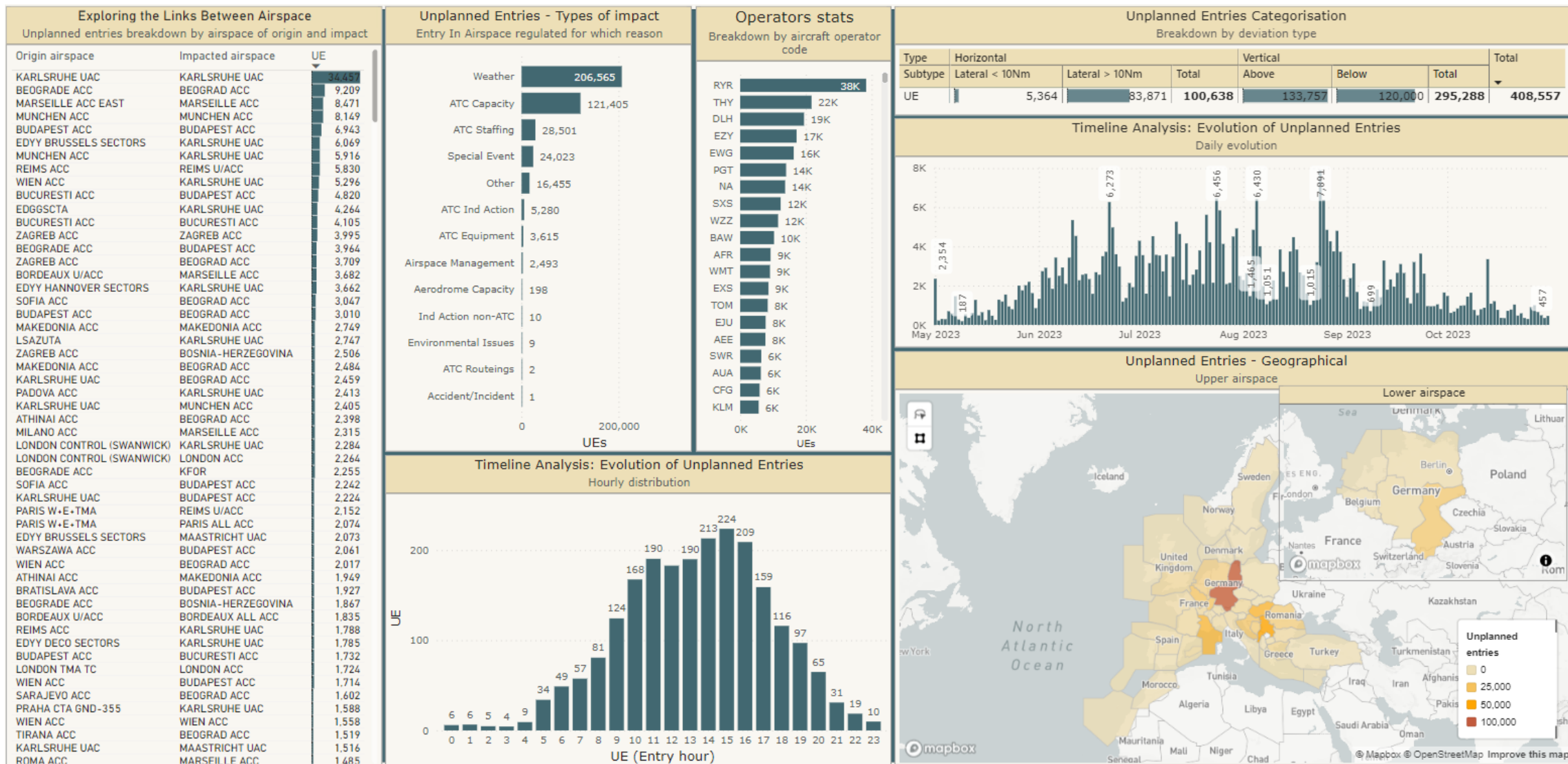


A total of 60% of flights deviated horizontally from filed plan in cruise phase

70% deviated vertically

8% of total flights deviate into a regulation, 6% of total do so vertically.

Disciplined Flight Plan Execution – Unplanned Entries



Some Analysis

The majority of UEs is due to a vertical deviation 65%,

Majority (50%) of unplanned entries into weather regulated airspace

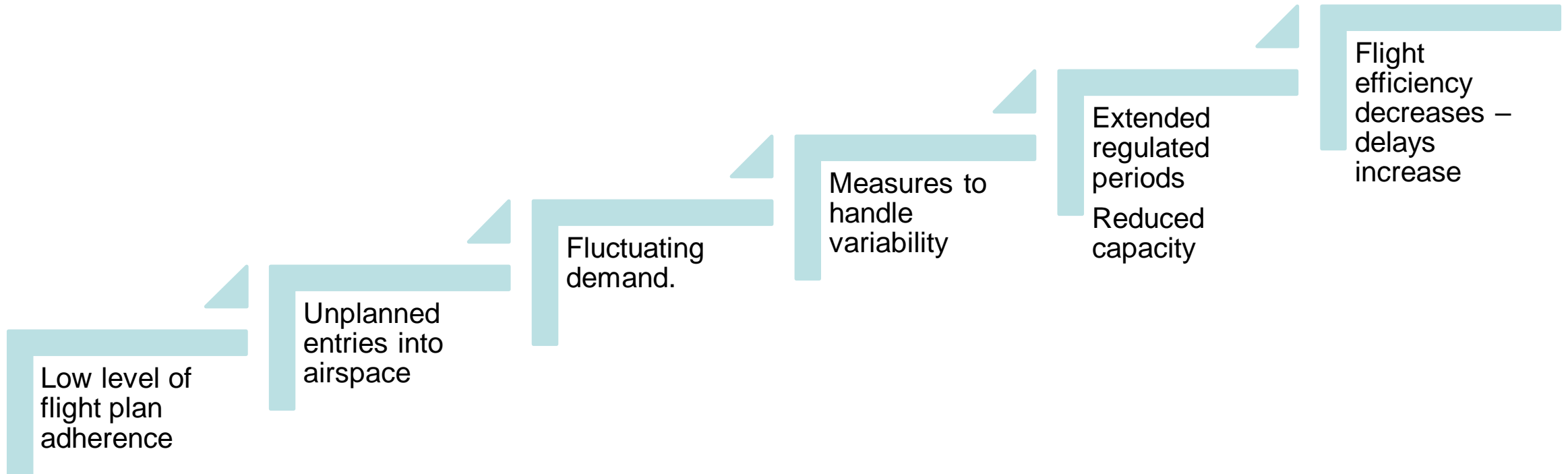
several regulated airspaces stand out: Budapest, Belgrade, Karlsruhe during summer in 2023

Many deviations originate within same ACC

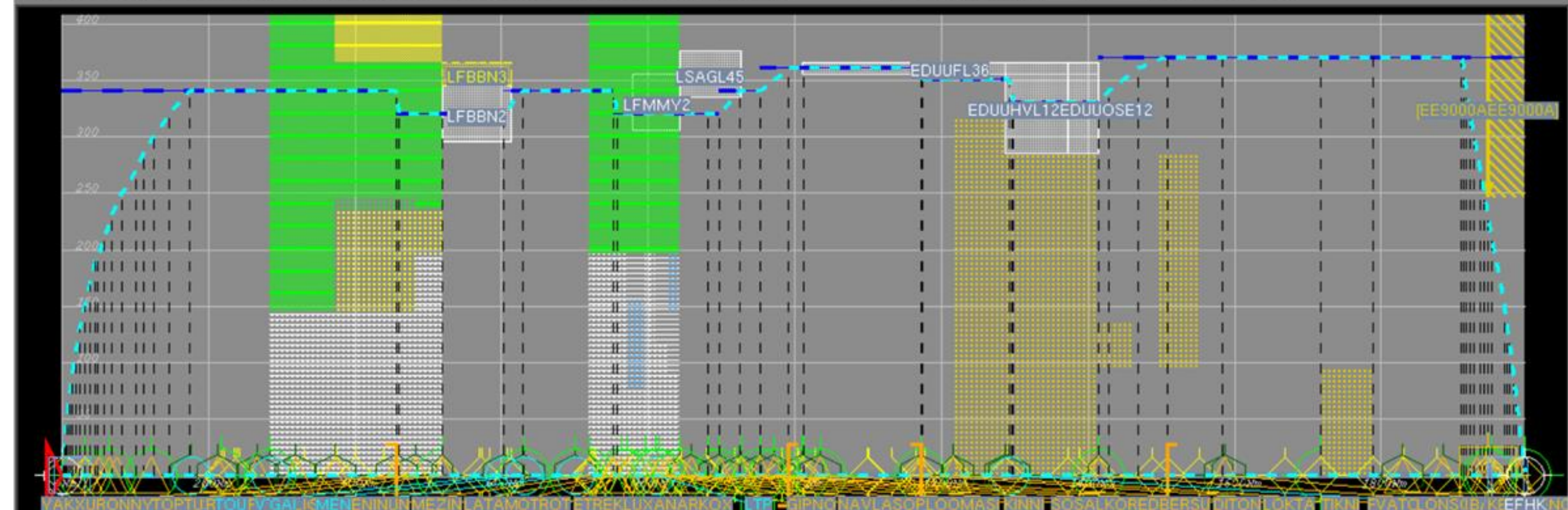
Some airspace see unplanned entries in unusual times (most of UEs for LHENU occur during 2000-2200)

Some operators consistently enter regulated airspace when operating between particular city pairs. Collaboration in investigation and mitigation essential

Impact of Unplanned Entries

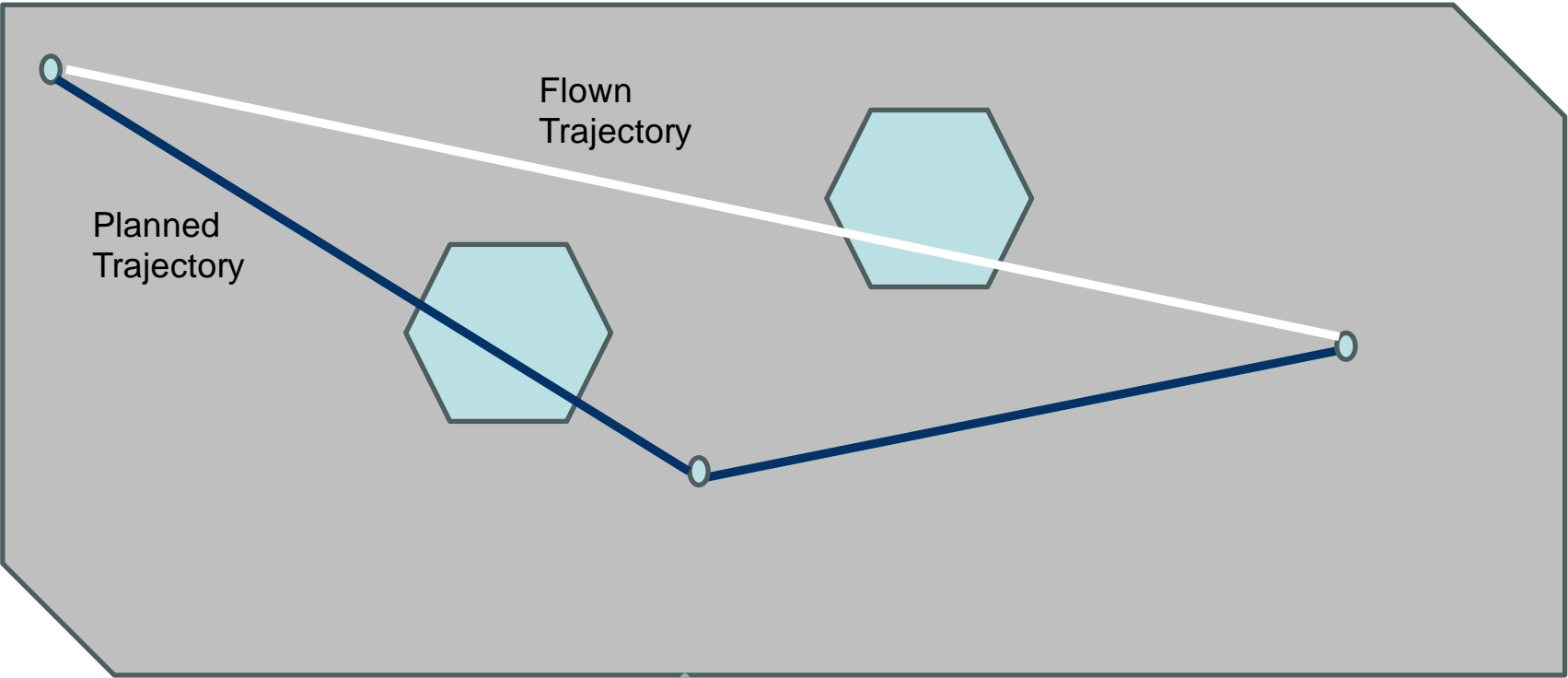


Alt 000 F Perf 000-005 Crs_S 230 Knots Clm_R 2087 Fpm Clm_S 158 Knots Dcn_R 727 Fpm Dcn_S 139 Knots
 RFL 340 F Dis 0+1996=1996 Nm Ats NIRAK3FLPFR Rsp 450 Knots Vis IFR-GAT-IFPSTART Arc A321 Rwy LPFR10/EFHK22L Fty
 FI 000 ETO 09-17:45:00 EET 00:00:00+04:35:36=04:35:36 HorSp 207 Knots VerSp 2213 Fpm (METEO_SYNC)



- Paper Savings? Trajectory never flown
- Profiled incorrectly
- Unnecessary or volatile measures

Direct Routings



- Unexpected Traffic
- Late Regulations
- Unnecessary measures
- Capacity Reductions



SUPPORTING
EUROPEAN
AVIATION

