

Supporting
European
Aviation



NM User Forum

Summer 2021 – Network Performance

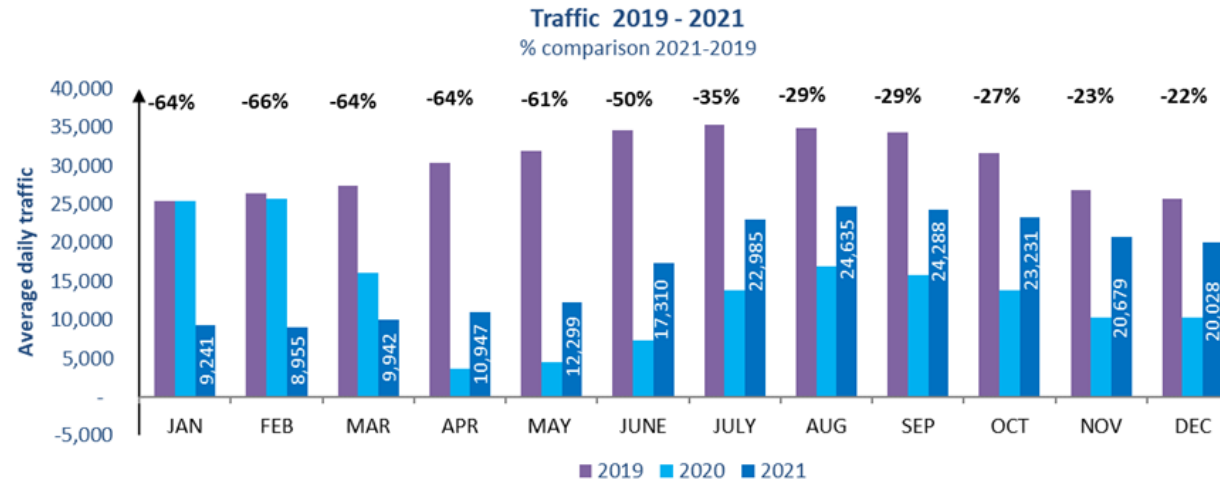
Ged Boydell

Head Operational Performance, EUROCONTROL

2nd February 2022

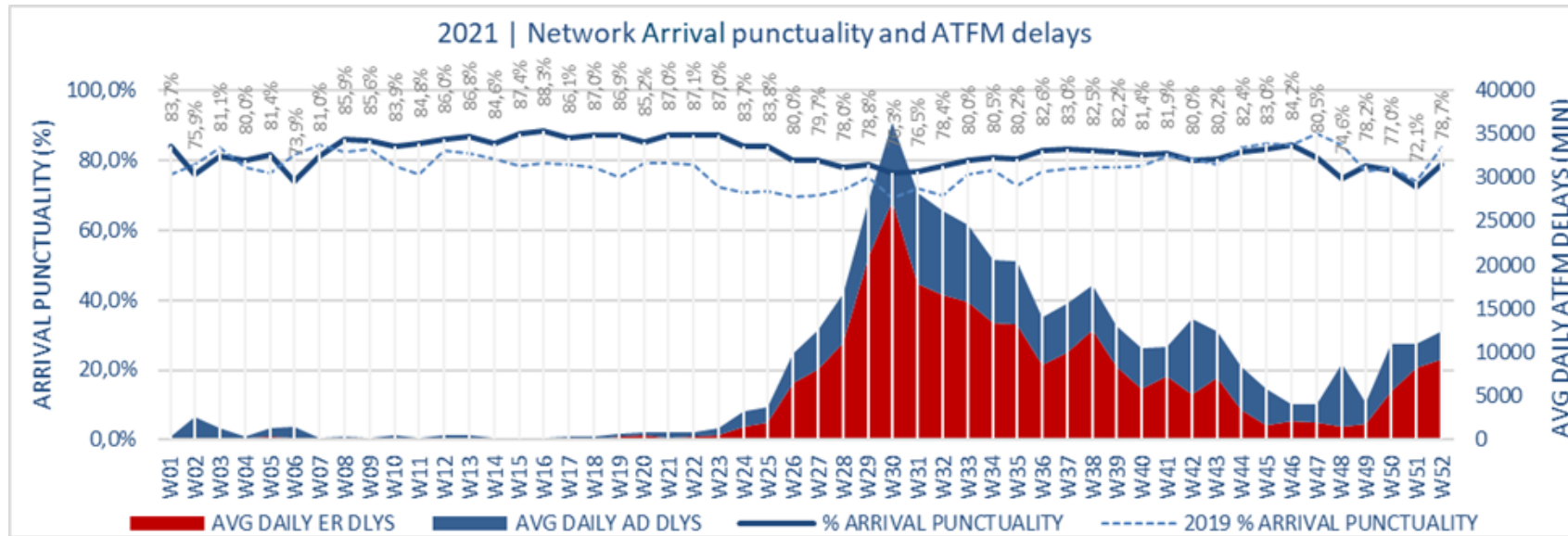


Traffic



- 2021 traffic 56% of 2019 levels, 4.8 million fewer flights
- Increase during summer, around 71% (of 2019 levels) in August-September.
- Low cost carriers closer to 2019 levels than traditional scheduled. Cargo and business aviation similar or above 2019.
- Traffic growth aligned with EUROCONTROL's most optimistic traffic scenario (until Omicron).
- Busiest day was 27 August with 26,773 flights

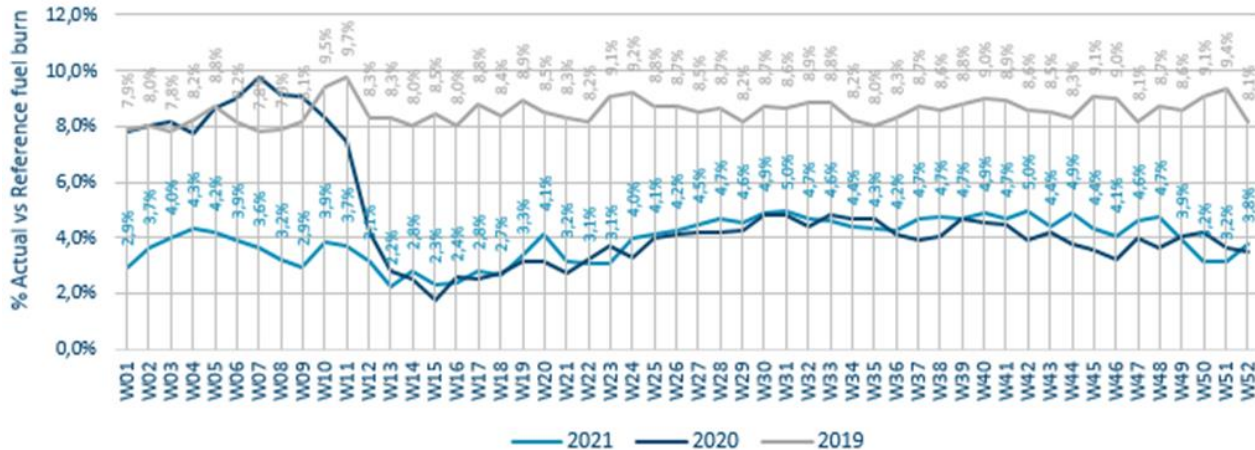
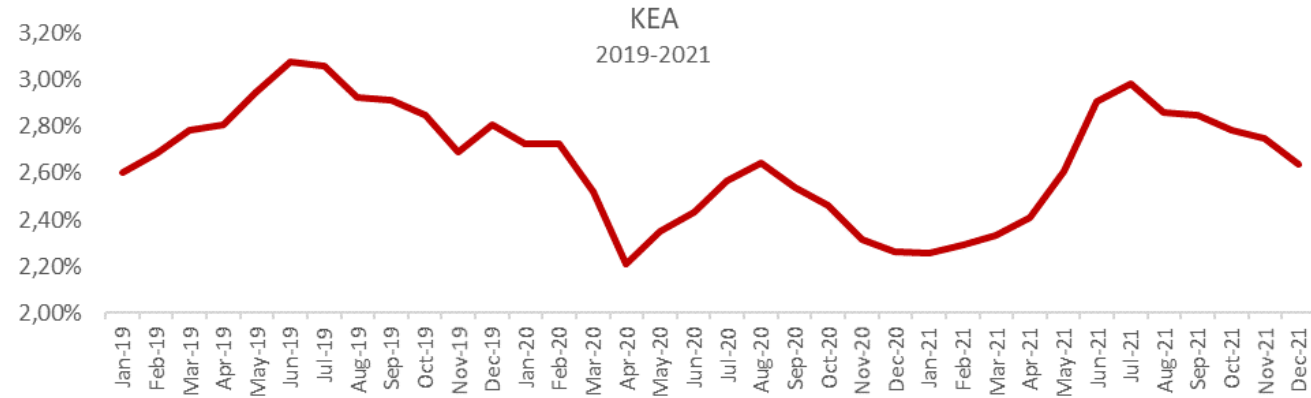
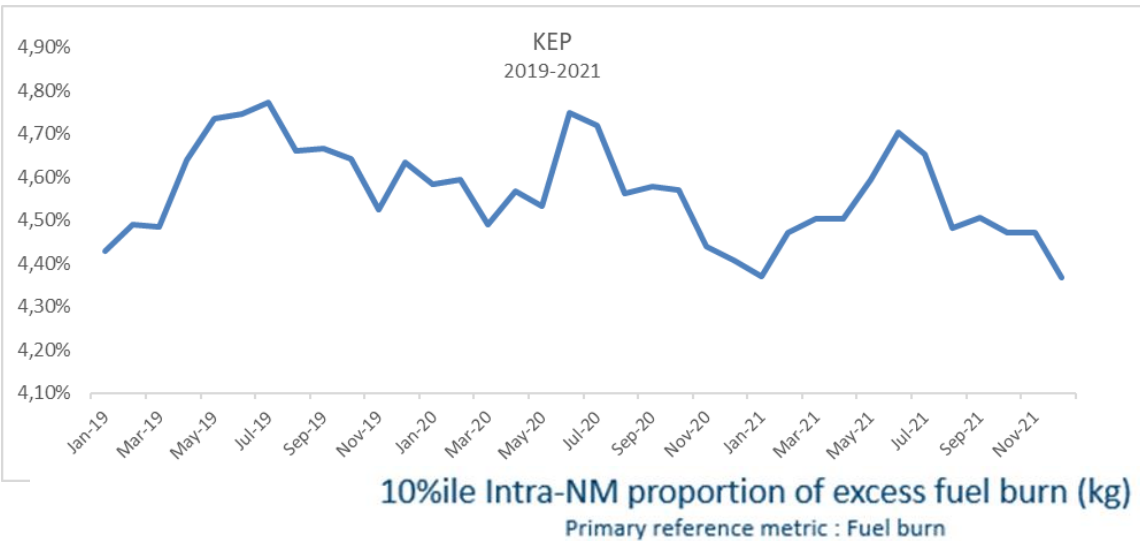
Airline Delay and Punctuality



- Arrival punctuality: from 85% early in year to just under 80% July to mid-August (vs. 72% in 2019)
- Most of the ACCs with very low or zero delays; capacity / staffing problems at French and Greek ACCs
- Greek airports (Athens and Heraklion) with capacity issues
- 10% of airline schedule delays were due to ATFM
- Government reasons (includes security or health) corresponded to 11% of all delays (vs. 2% in 2019).
- Last few weeks 2021, arrival punctuality under 80% due to airline and reactionary delays

Flight Efficiency

- January-April 2021 period recorded historical low monthly averages of KEP and KEA (4.5% and 2.3%)
- The Belarus ban had a significant impact on the KPIs, adding around 0.05pp and is still impacting the network



excl. ACFT_TY = 'ZZZZ', circular, maintenance flights and dedicated refuelers

- The Excess Fuel Burn indicator fluctuated during 2021 due to the changing mix of routes flown at low traffic levels
- Network is still 4% to 5% more fuel burn efficient

ENTRY DATE: 1/1/2021 to 12/31/2021

MARKET SEGMENTS: ALL CARGO, BUSINESS, CHARTER, LOW COST

AO ASSOCIATIONS: A4E AIRLINES, AIRE AIRLINES, ERAA AIRLINES, IATA MEMBERS

AO GROUPS: 224TH FLIGHT UNIT, 8TH AIRLIFT BASE, POLI..., A/S LUFT TRANSPORT, ABELAG AVIATION

AIR OPERATORS: AAB, AAL, AAR, AAW

AIRCRAFT CAT: AIRCRAFT TYPE NOT (Y...), AMPHIBIAN, HELICOPTER, LARGE PISTON

