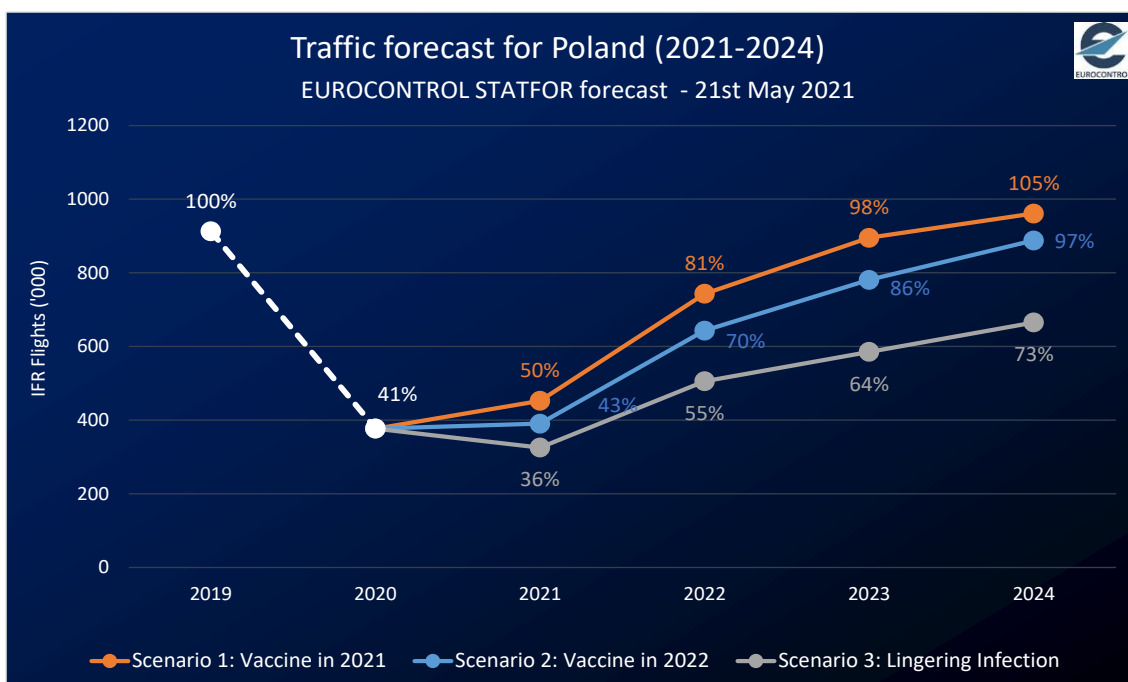
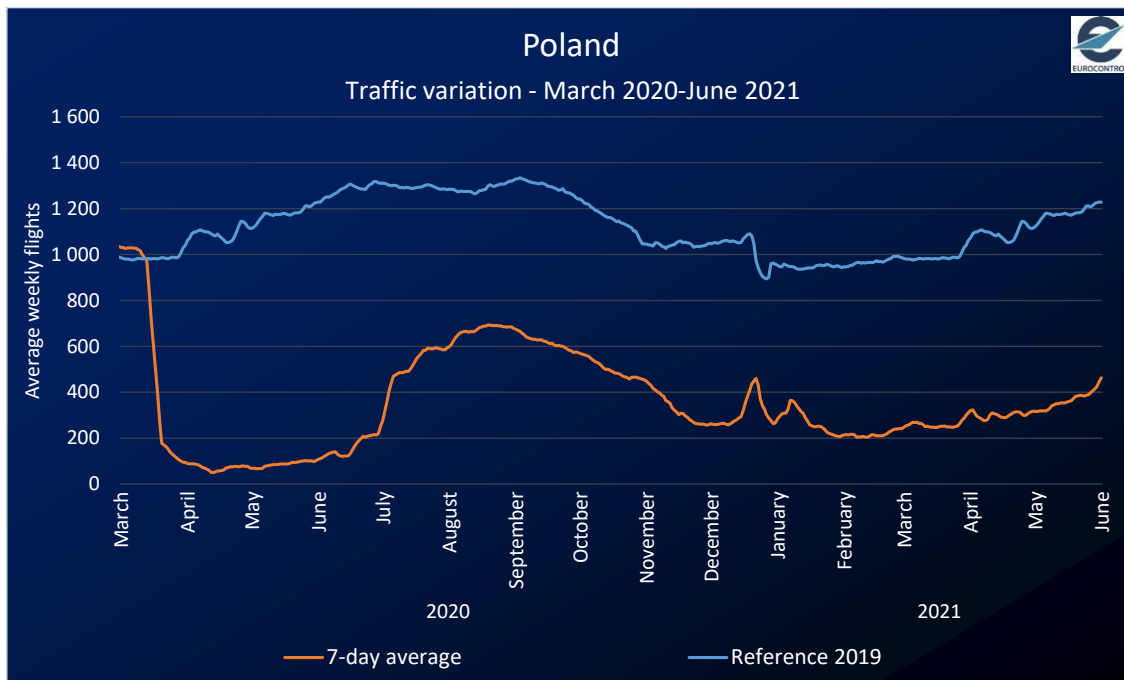




## Poland

- Total flights lost since 1 March 2020: 355'000 flights
- Current flight status: 463 daily flights or -62% vs 2019 (7-day average)<sup>1</sup>
- Traffic forecast: 43% of 2019 in 2021 & 70% in 2022<sup>2</sup>
- GDP: +3.9% in 2021 & +4.4% in 2022 (vs. previous year)<sup>3</sup>
- Vaccination: 19.29 per hundred people fully vaccinated<sup>4</sup>
- Busiest airport: Warsaw with 208 average daily flights<sup>1</sup> (-62% vs. 2019)
- Busiest airline: LOT with 111 average daily flights<sup>1</sup> (-67% vs. 2019)

### 2020/21 Traffic Evolution & 2021/24 Outlook



# COVID-19 Impact on EUROCONTROL Member States

EUROCONTROL States Briefings

Friday, 4 June 2021



## Traffic Composition

Airport	Average daily flights (Dep/Arr)	% vs 2019
Warsaw/Okęcie	208	-62%
Katowice/Pyrzowice	55	-56%
Krakow/Balice	55	-71%
Gdansk/Rebiechowo	52	-62%
Wroclaw/Strachowice	41	-57%

Aircraft Operator	Average daily flights	% vs 2019
LOT	111	-67%
Ryanair	72	-69%
Wizz Air	36	-77%
Enter Air Sp.z.O.O.	32	-44%
Lufthansa	17	-77%

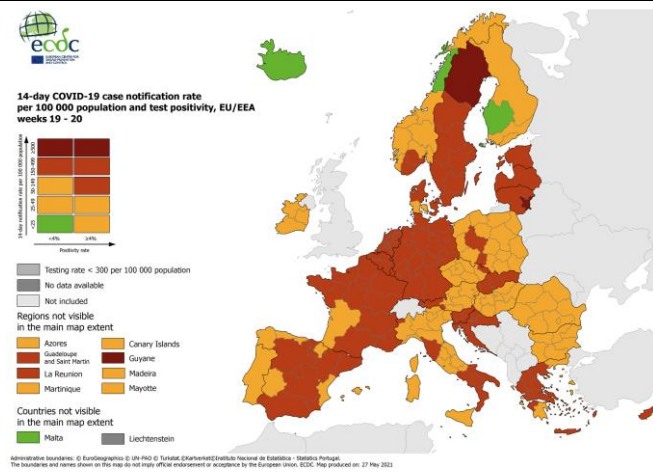
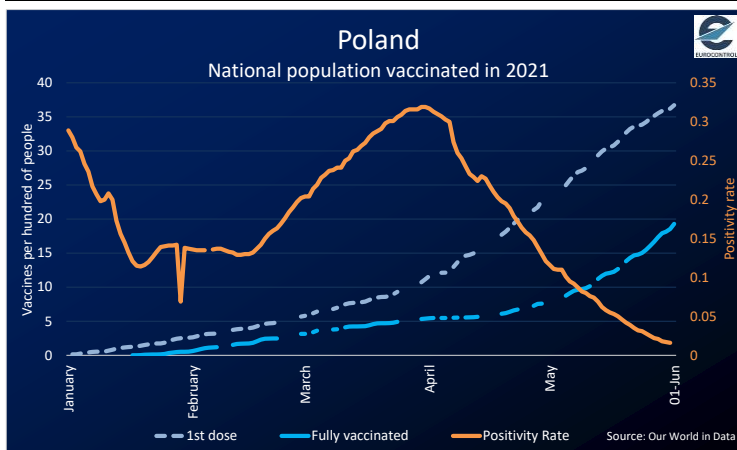
Country pair	Average daily flights	% vs 2019
from/to POLAND	80	-36%
from/to GERMANY	55	-67%
from/to UNITED KINGDOM	29	-80%
from/to GREECE	29	-54%
from/to SPAIN	25	-48%

Flight Category	Average daily flights	% vs 2019
Internal	61	-45%
International	382	-65%
Round Robin Flights	19	+28%

Aircraft Category	Average daily flights	% vs 2019
Narrow body	245	-68%
Other	106	+8%
Regional Jet	66	-69%
Commuter (TurboP)	30	-75%
Wide body	14	-44%
Very Large Aircraft	1	-43%

Market Segment	Average daily flights	% vs 2019
Traditional Scheduled	155	-72%
Lowcost	109	-74%
Charter	72	-41%
Business Aviation	53	+17%
Other Types	39	+22%
Military	19	-30%
All-Cargo	16	-25%

## Vaccination Progress



Source : *European Centre for Disease Prevention and Control*

## SUPPORTING EUROPEAN AVIATION



### Data Sources:

- 1 Period between 27-05 – 02-06/2021 (as compared to the same week in 2019, 30-05 – 05-06/2019).
- 2 EUROCONTROL STATFOR forecast (21 May 2021) Scenario No.2.
- 3 GDP growth assumptions used in STATFOR scenario No.2 forecast. Source: Oxford Economics, March 2021.
- 4 Number of people fully vaccinated on 01 June 2021. Source: [Our World in Data](https://ourworldindata.org).

Contacts: Aviation Intelligence Unit

[Aviation.Intelligence@eurocontrol.int](mailto:Aviation.Intelligence@eurocontrol.int)

