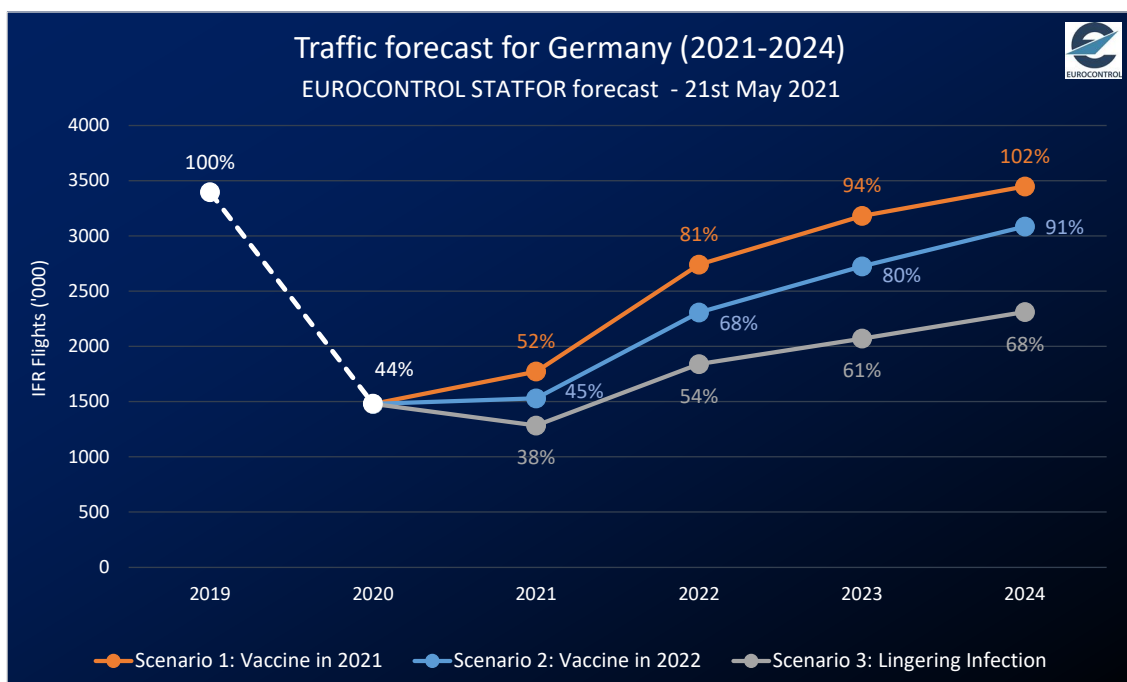
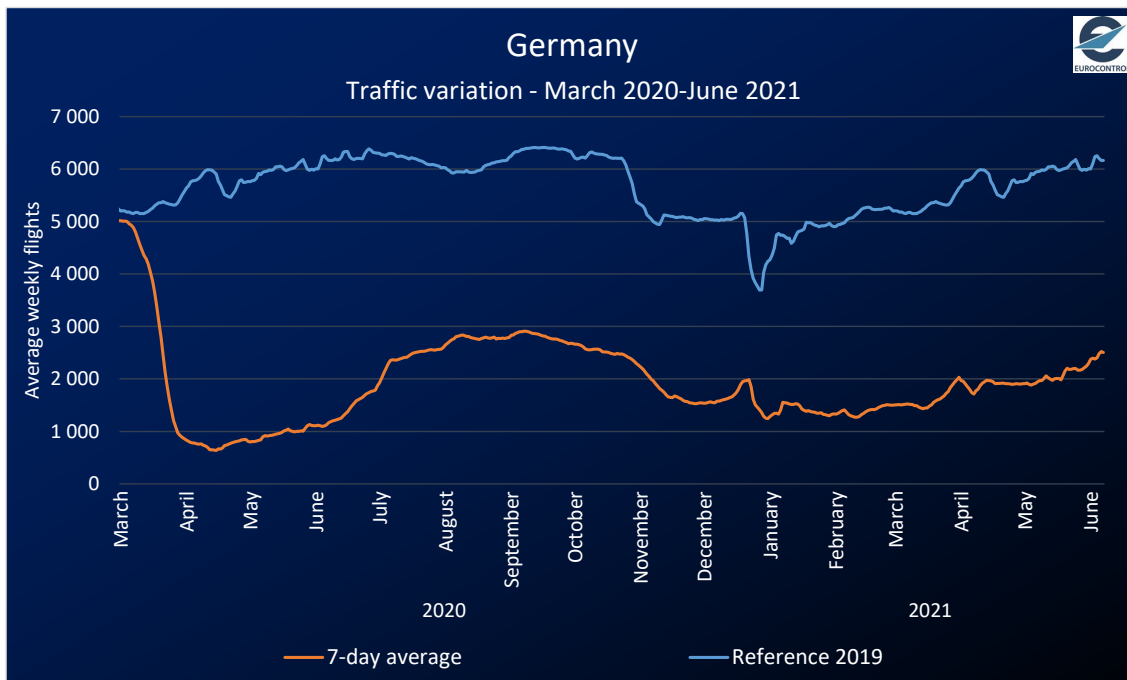




# Germany

- Total flights lost since 1 March 2020: 1.7M flights
- Current flight status: 2505 daily flights or -59% vs 2019 (7-day average)<sup>1</sup>
- Traffic forecast: 45% of 2019 in 2021 & 68% in 2022<sup>2</sup>
- GDP: +3.8% in 2021 & +4.3% in 2022 (vs. previous year)<sup>3</sup>
- Vaccination: 21.71 per hundred people fully vaccinated<sup>4</sup>
- Busiest airport: Frankfurt with 641 average daily flights<sup>1</sup> (-58% vs. 2019)
- Busiest airline: Lufthansa with 526 average daily flights<sup>1</sup> (-66% vs. 2019)

## 2020/21 Traffic Evolution & 2021/24 Outlook



# COVID-19 Impact on EUROCONTROL Member States

EUROCONTROL States Briefings

Thursday, 10 June 2021



## Traffic Composition

Top 5 Airports (02-06-2021 - 08-06-2021)		
Airport	Average daily flights (Dep/Arr)	% vs 2019
Frankfurt	641	-58%
Munich	352	-71%
Cologne/Bonn	213	-50%
Berlin Brandenburg	200	-25%
Leipzig/Halle	195	-5%

Top 5 Aircraft Operators (02-06-2021 - 08-06-2021)		
Aircraft Operator	Average daily flights	% vs 2019
Lufthansa	526	-66%
Eurowings	159	-78%
Ryanair	120	-72%
DHL Express	113	+14%
TUI fly	64	-49%

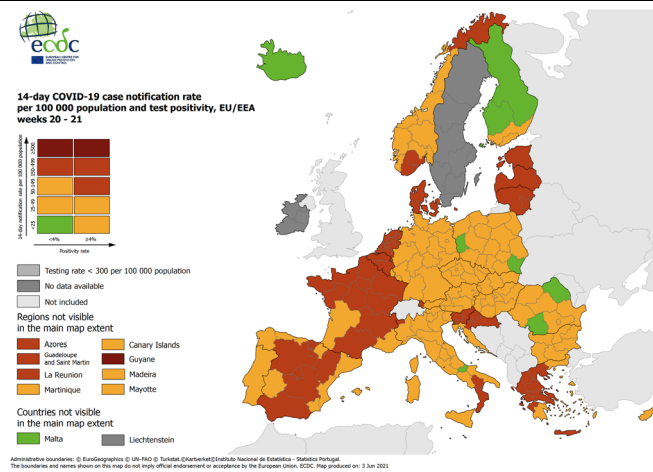
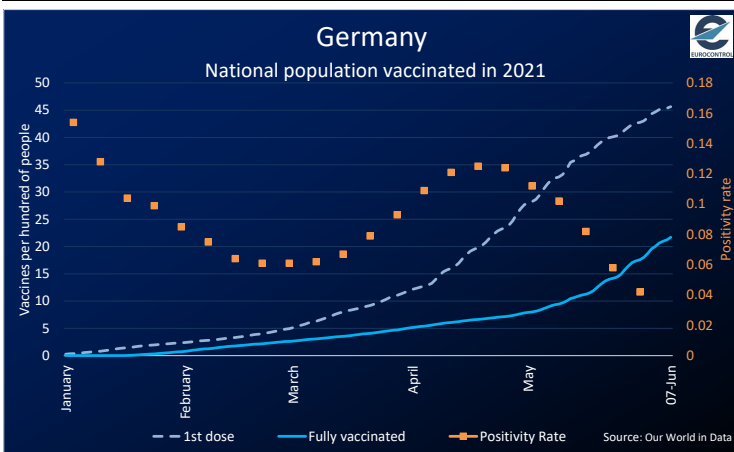
Top 5 City Pairs (02-06-2021 - 08-06-2021)		
Country pair	Average daily flights	% vs 2019
from/to GERMANY	399	-57%
from/to SPAIN	343	-46%
from/to ITALY	171	-65%
from/to TURKEY	137	-62%
from/to GREECE	134	-41%

Flight Category (02-06-2021 - 08-06-2021)		
Flight Category	Average daily flights	% vs 2019
Internal	381	-58%
International	2 106	-60%
Round Robin Flights	18	+16%

Aircraft Category (02-06-2021 - 08-06-2021)		
Aircraft Category	Average daily flights	% vs 2019
Narrow body	1 219	-70%
Other	598	-8%
Wide body	254	-28%
Regional Jet	245	-61%
Very Large Aircraft	153	-41%
Commuter (TurboP)	37	-79%

Market Segment (02-06-2021 - 08-06-2021)		
Market Segment	Average daily flights	% vs 2019
Traditional Scheduled	956	-69%
Lowcost	500	-74%
Business Aviation	390	-4%
All-Cargo	337	+18%
Other Types	187	-1%
Charter	91	-46%
Military	44	-12%

## Vaccination Progress



Source : *European Centre for Disease Prevention and Control*

## SUPPORTING EUROPEAN AVIATION



### Data Sources:

- 1 Period between 02-06 – 08-06/2021 (as compared to the same week in 2019, 05-06 – 11-06/2019).
- 2 EUROCONTROL STATFOR forecast (21 May 2021) Scenario No.2.
- 3 GDP growth assumptions used in STATFOR scenario No.2 forecast. Source: Oxford Economics, March 2021.
- 4 Number of people fully vaccinated on 07 June 2021. Source: *Our World in Data*.

Contacts: Aviation Intelligence Unit  
[Aviation.Intelligence@eurocontrol.int](mailto:Aviation.Intelligence@eurocontrol.int)

