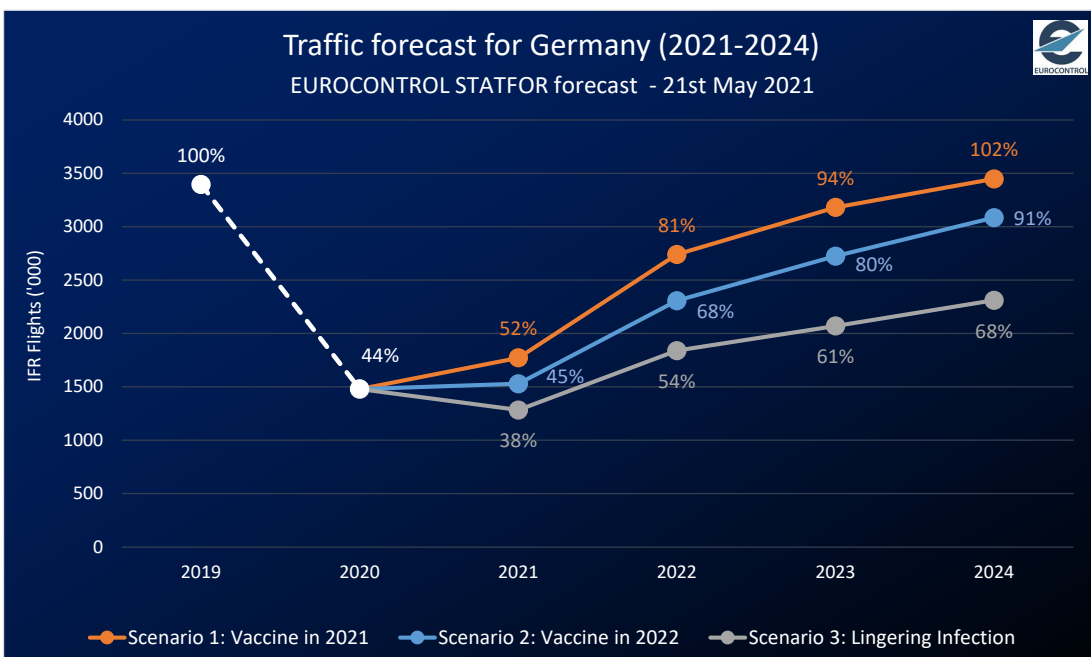
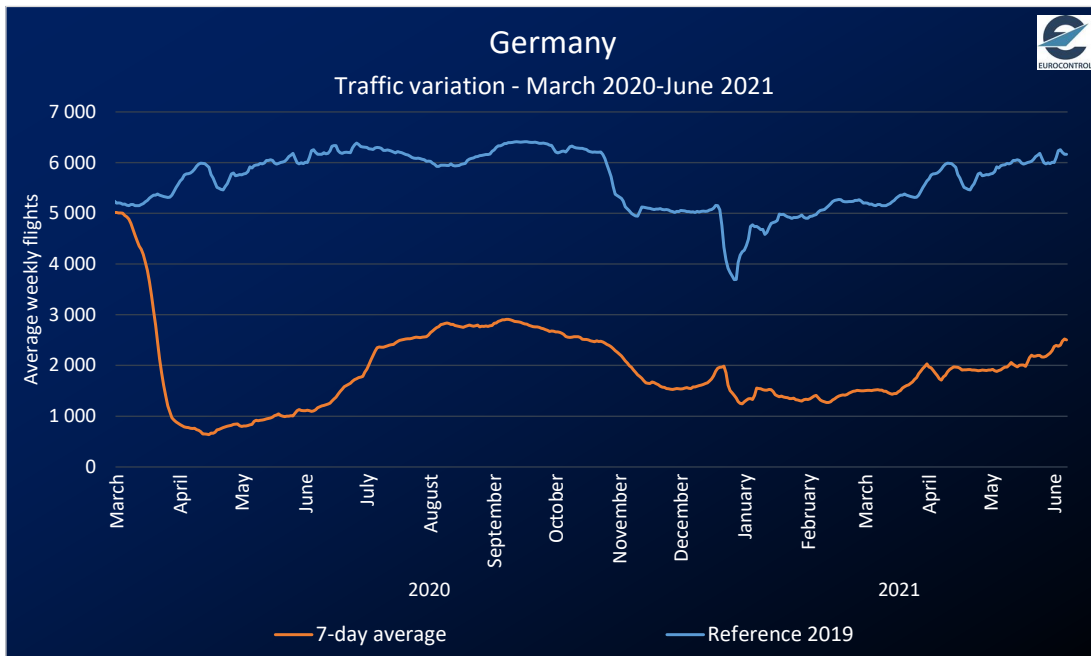




Deutschland

- **Rückgang Flüge gesamt seit 01.03.2020: 1,7 Mio. Flüge**
- **Aktueller Flugstatus: 2505 Flüge pro Tag oder -59% ggü. 2019 (7-Tage-Durchschnitt)¹**
- **Verkehrsprognose: 45% von 2019 in 2021 und 68% in 2022²**
- **BIP: +3,8% in 2021 und +4,3% in 2022 (ggü. Vorjahr)³**
- **Impffortschrit: 21,71 vollständig Geimpfte pro hundert Einwohner⁴**
- **Flughafen mit den meisten Flügen: Frankfurt mit durchschnittlich 641 Flügen pro Tag¹ (-58% ggü. 2019)**
- **Fluglinie mit den meisten Flügen: Lufthansa mit durchschnittlich 526 Flügen pro Tag¹ (-66% ggü. 2019)**

Verkehrsentwicklung 2020/21 und Ausblick auf 2021/24



COVID-19 Impact on EUROCONTROL Member States

EUROCONTROL States Briefings

Donnerstag, 10. Juni 2021



Verkehrszusammensetzung

Airport	Average daily flights (Dep/Arr)	% vs 2019
Frankfurt	641	-58%
Munich	352	-71%
Cologne/Bonn	213	-50%
Berlin Brandenburg	200	-25%
Leipzig/Halle	195	-5%

Aircraft Operator	Average daily flights	% vs 2019
Lufthansa	526	-66%
Eurowings	159	-78%
Ryanair	120	-72%
DHL Express	113	+14%
TUI fly	64	-49%

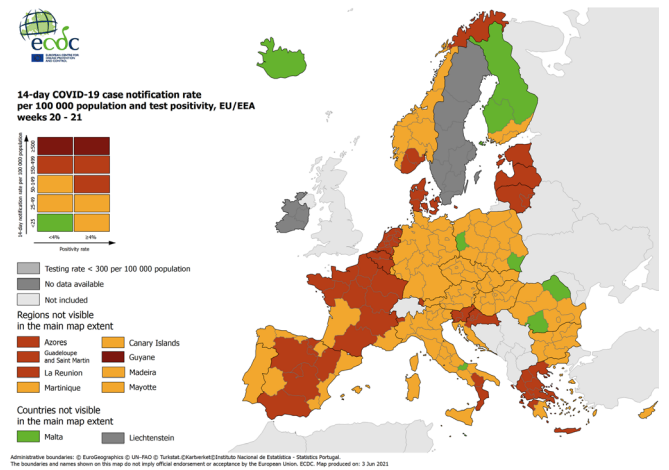
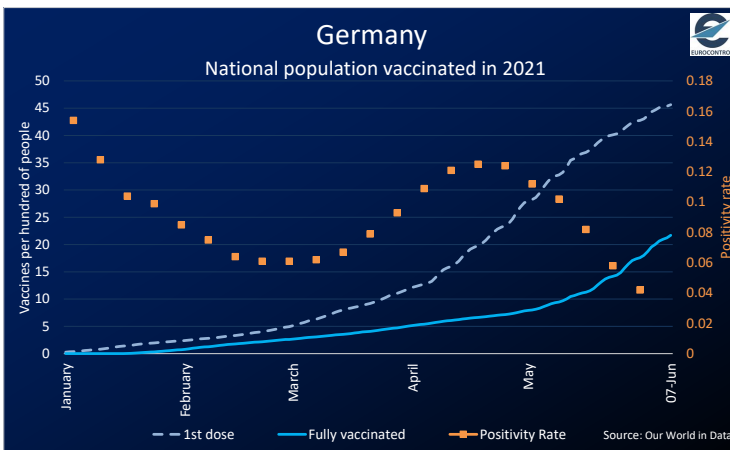
Country pair	Average daily flights	% vs 2019
from/to GERMANY	399	-57%
from/to SPAIN	343	-46%
from/to ITALY	171	-65%
from/to TURKEY	137	-62%
from/to GREECE	134	-41%

Flight Category	Average daily flights	% vs 2019
Internal	381	-58%
International	2 106	-60%
Round Robin Flights	18	+16%

Aircraft Category	Average daily flights	% vs 2019
Narrow body	1 219	-70%
Other	598	-8%
Wide body	254	-28%
Regional Jet	245	-61%
Very Large Aircraft	153	-41%
Commuter (TurboP)	37	-79%

Market Segment	Average daily flights	% vs 2019
Traditional Scheduled	956	-69%
Lowcost	500	-74%
Business Aviation	390	-4%
All-Cargo	337	+18%
Other Types	187	-1%
Charter	91	-46%
Military	44	-12%

Impfprogress



Source : *European Centre for Disease Prevention and Control*

SUPPORTING EUROPEAN AVIATION



Data Sources:

- 1 Period between 02-06 – 08-06/2021 (as compared to the same week in 2019, 05-06 – 11-06/2019).
- 2 EUROCONTROL STATFOR forecast (21 May 2021) Scenario No.2.
- 3 GDP growth assumptions used in STATFOR scenario No.2 forecast. Source: Oxford Economics, March 2021.
- 4 Number of people fully vaccinated on 07 June 2021. Source: [Our World in Data](#).

Contacts: Aviation Intelligence Unit
Aviation.Intelligence@eurocontrol.int

