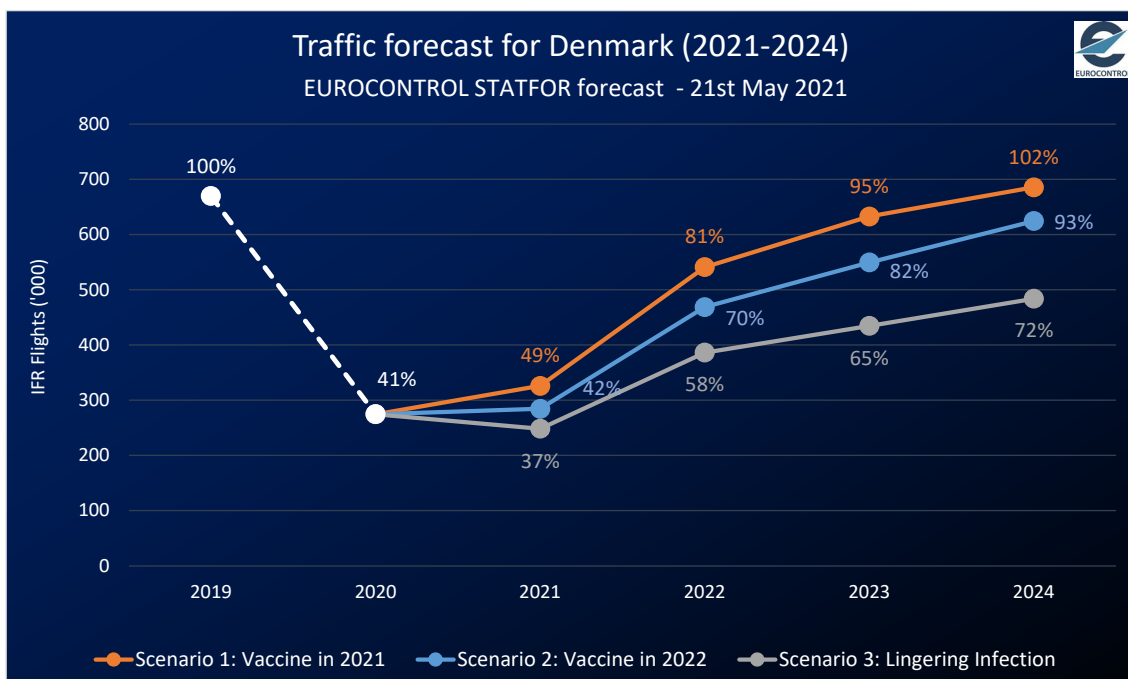
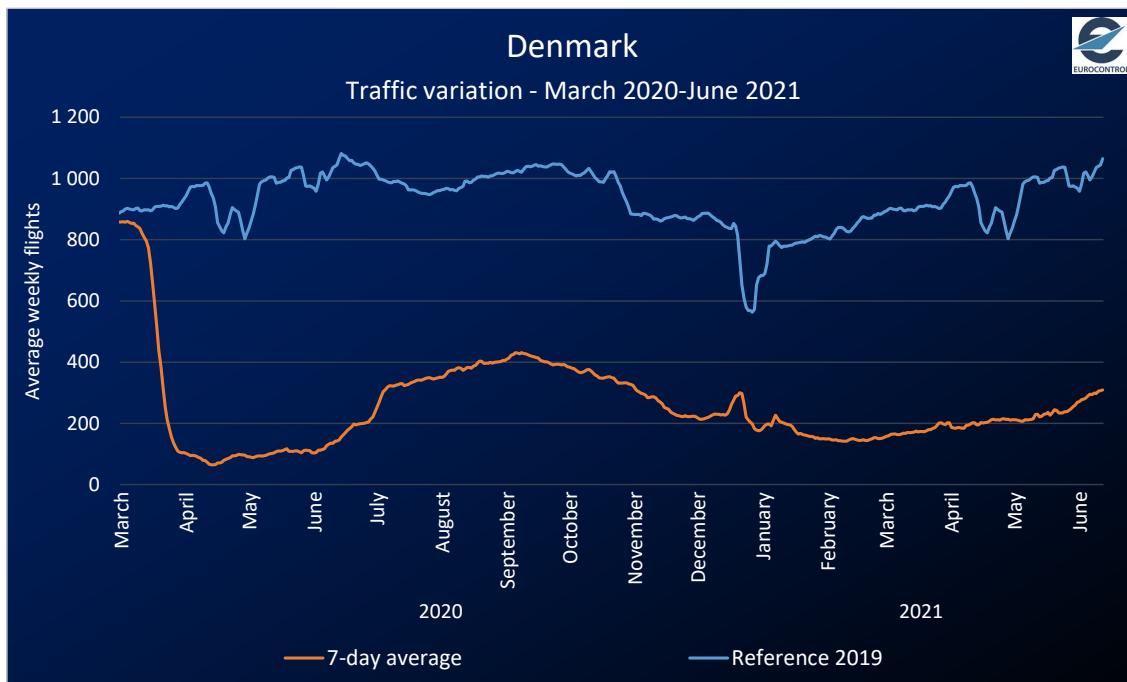


Denmark

- Total flights lost since 1 March 2020: 319,000 flights
- Current flight status: 309 daily flights or -71% vs 2019 (7-day average) ¹
- Traffic forecast: 42% of 2019 in 2021 & 70% in 2022 ²
- GDP: +1.6% in 2021 & +3.3% in 2022 (vs. previous year) ³
- Vaccination: 25.47 per hundred people fully vaccinated ⁴
- Busiest airport: Copenhagen with 210 average daily flights¹ (-74% vs. 2019)
- Busiest airline: SAS with 59 average daily flights¹ (-82% vs. 2019)

2020/21 Traffic Evolution & 2021/24 Outlook



Traffic Composition

Airport	Average daily flights (Dep/Arr)	% vs 2019
Copenhagen/Kastrup	210	-74%
Billund	40	-73%
Aalborg	40	-40%
Copenhagen/Roskilde	35	+15%
Bornholm/Ronne	15	-69%

Aircraft Operator	Average daily flights	% vs 2019
SAS	59	-82%
Danish Intl Heli	25	-57%
Ryanair	16	-74%
DHL Express	13	-11%
KLM	12	-62%

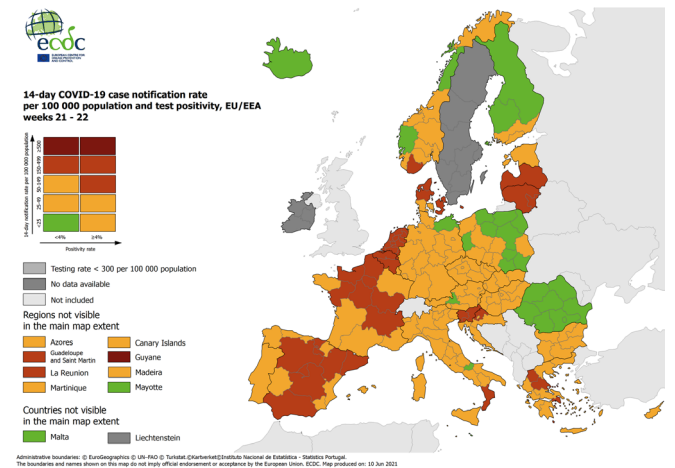
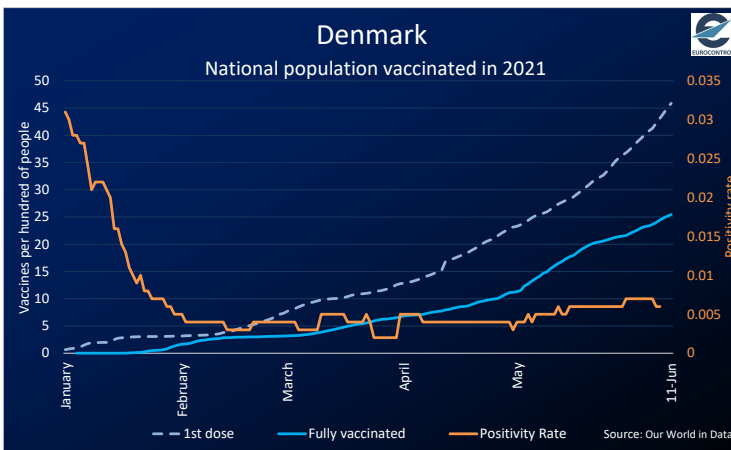
Country pair	Average daily flights	% vs 2019
from/to DENMARK	76	-50%
from/to GERMANY	32	-70%
from/to NORWAY	20	-80%
from/to SPAIN	19	-66%
from/to SWEDEN	19	-73%

Flight Category	Average daily flights	% vs 2019
Internal	66	-54%
International	229	-75%
Round Robin Flights	14	-14%

Aircraft Category	Average daily flights	% vs 2019
Narrow body	134	-79%
Other	75	-26%
Regional Jet	40	-74%
Commuter (TurboP)	33	-71%
Wide body	21	-52%
Very Large Aircraft	7	-43%

Market Segment	Average daily flights	% vs 2019
Traditional Scheduled	158	-75%
Lowcost	42	-84%
Business Aviation	36	-22%
Other Types	26	-22%
Charter	22	-67%
All-Cargo	20	-6%
Military	5	-6%

Vaccination Progress



Source : European Centre for Disease Prevention and Control

SUPPORTING EUROPEAN AVIATION



Data Sources:

- 1 Period between 07-06 – 13-06/2021 (as compared to the same week in 2019, 10-06 – 16-06/2019).
- 2 EUROCONTROL STATFOR forecast (21 May 2021) Scenario No.2.
- 3 GDP growth assumptions used in STATFOR scenario No.2 forecast. Source: Oxford Economics, March 2021.
- 4 Number of people fully vaccinated on 11 June 2021. Source: Our World in Data.

Contacts: Aviation Intelligence Unit
Aviation.Intelligence@eurocontrol.int