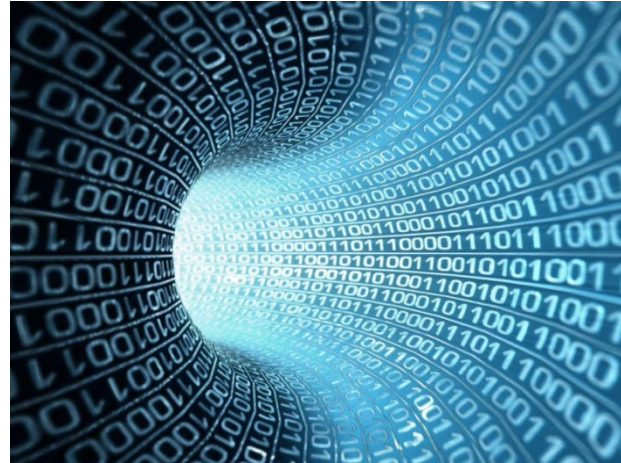


Potential of AI

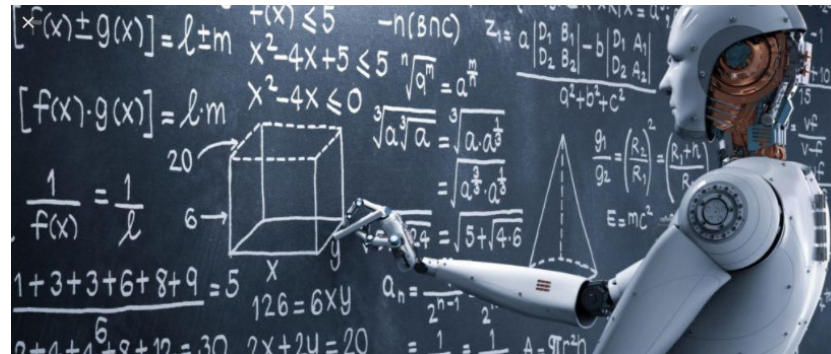
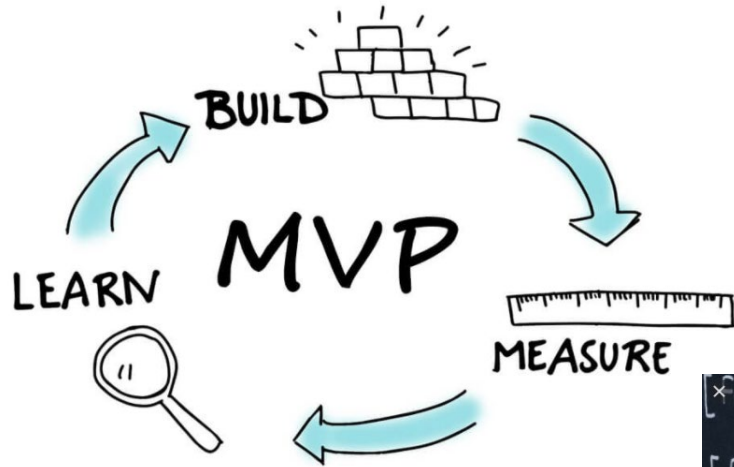


Advanced autoplanner background

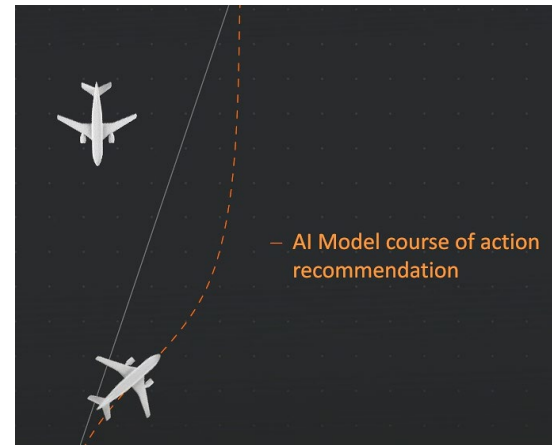
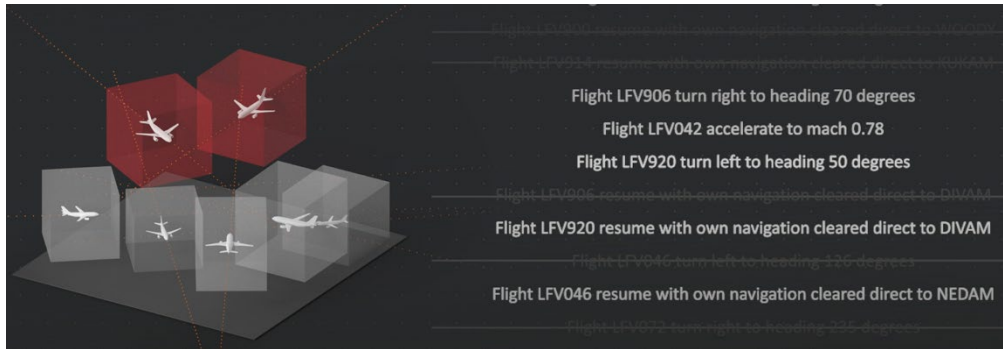
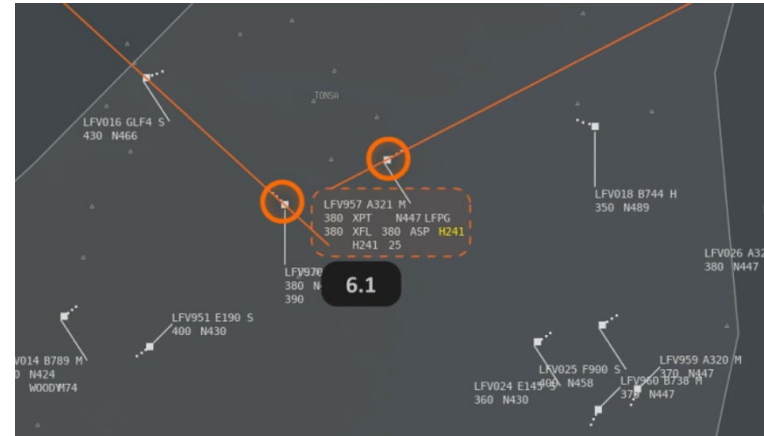
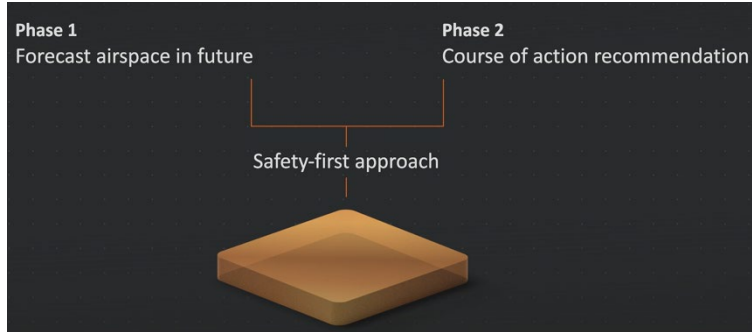


This project has been financed by the Swedish Transport Administration

Key factors for success



Results

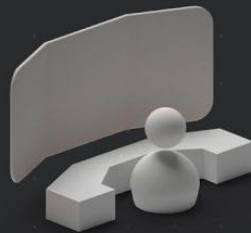


AI Model successfully separates aircraft and controls them safely and efficiently through the sector.

Future challenges

Increased complexity in AI modelling

- Climbing and descending traffic
- Various wind conditions



Human Machine Interface (HMI)

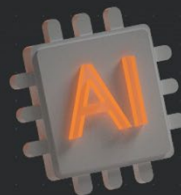
- Presented proposed instructions
- Presented time for execution

Explainability of AI

Human-Machine interaction

Safety aspects

Infinite traffic scenarios



Redundancy

Financial costs

Weather conditions

Learning points





<https://www.lfv.se/en/news/news-2020/ai>

Thank you!