

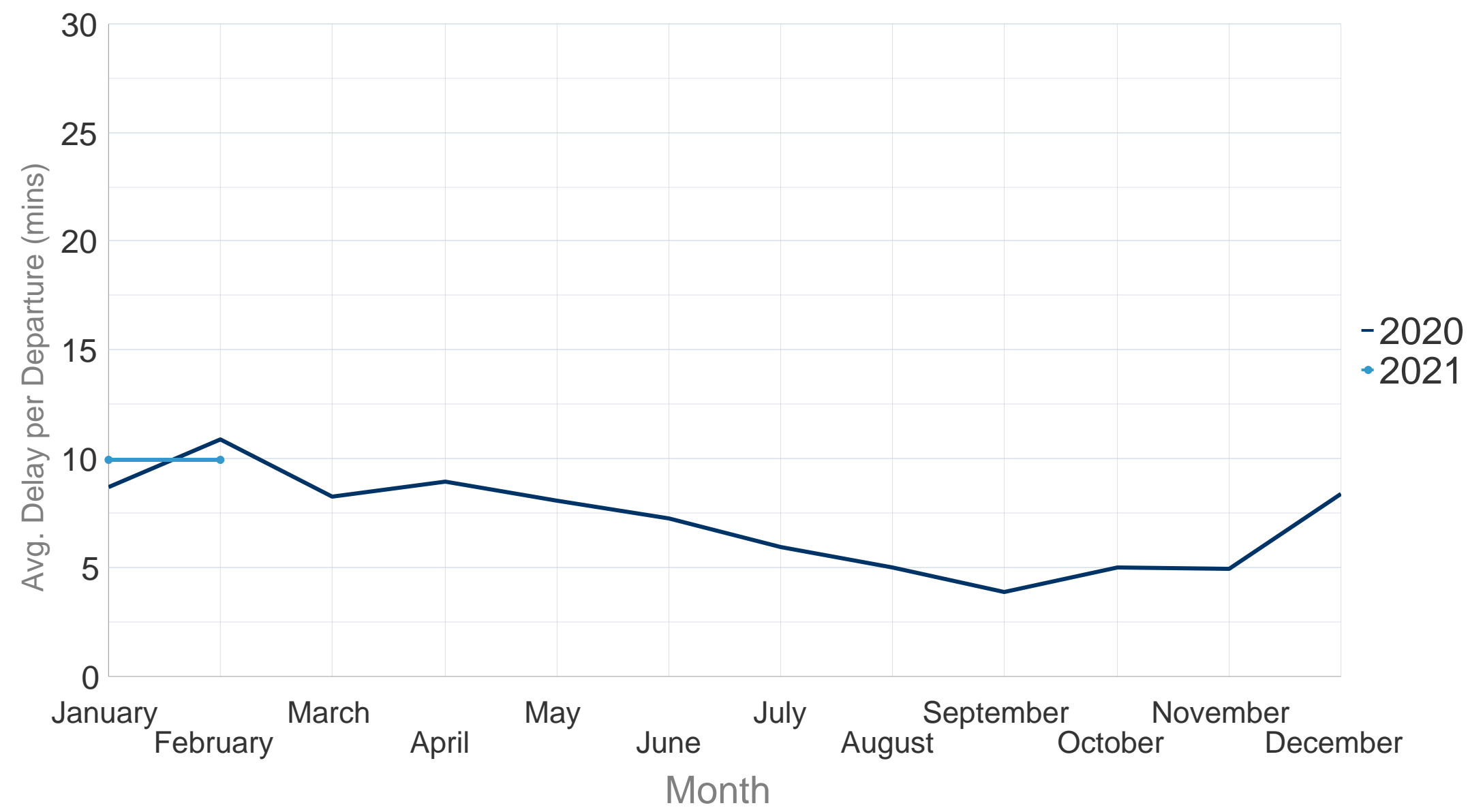
All-Causes Delay to Air Transport in Europe



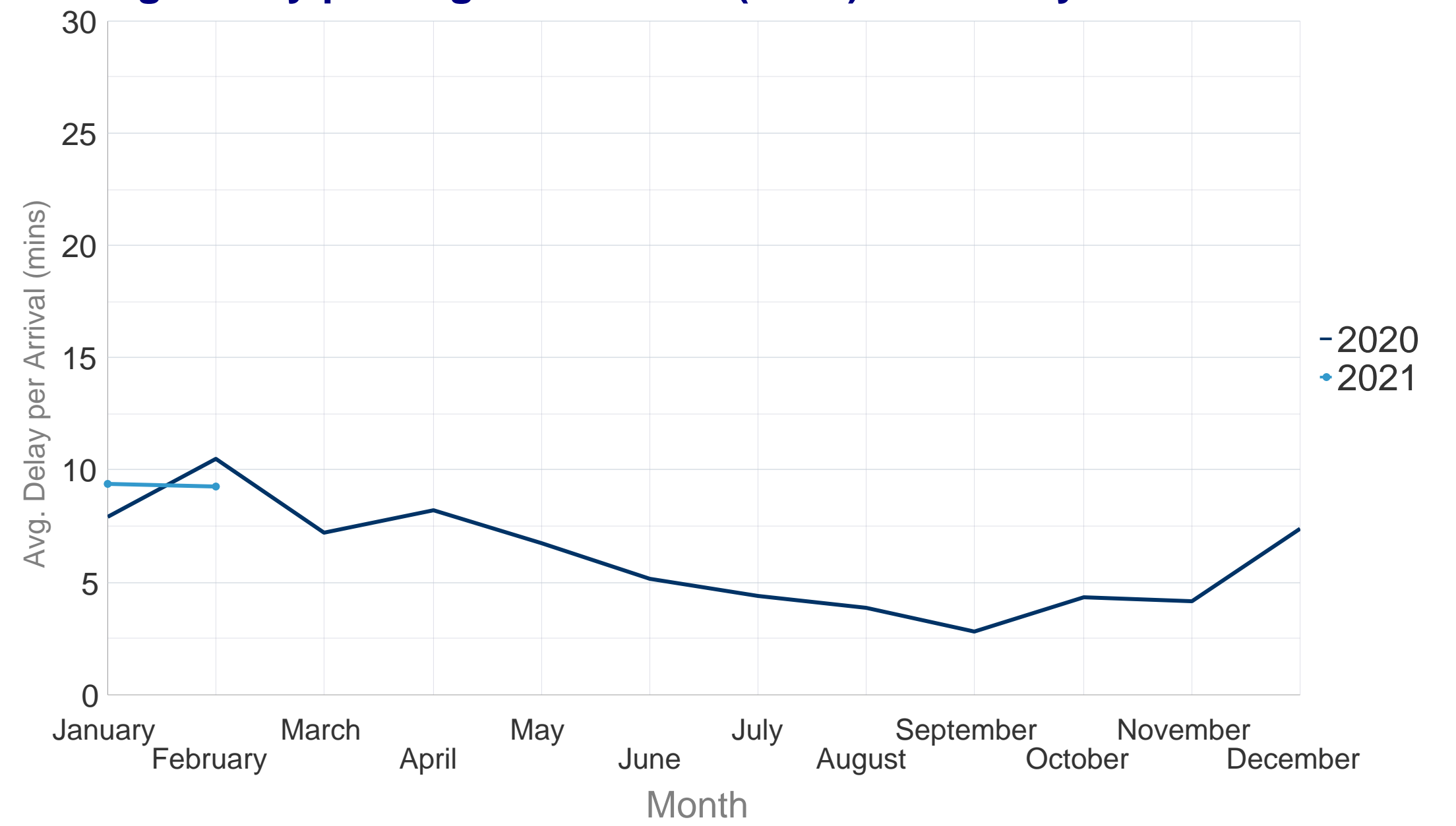
February 2021

Flights decreased by 66% in February 2021 as the COVID-19 pandemic continued to impact the aviation industry, with Fridays remaining the busiest days in the network. Paris CDG, Frankfurt Main and Amsterdam Schiphol were the busiest airports, with Turkish Airlines, Air France and Wideroe the busiest airlines in terms of flights. ATFM en-route delays remained low. Amsterdam Schiphol saw disruption due to snow on the 07 and 08 February.

Average Delay per Flight on Departure (mins) - February 2021



Average Delay per Flight on Arrival (mins) - February 2021

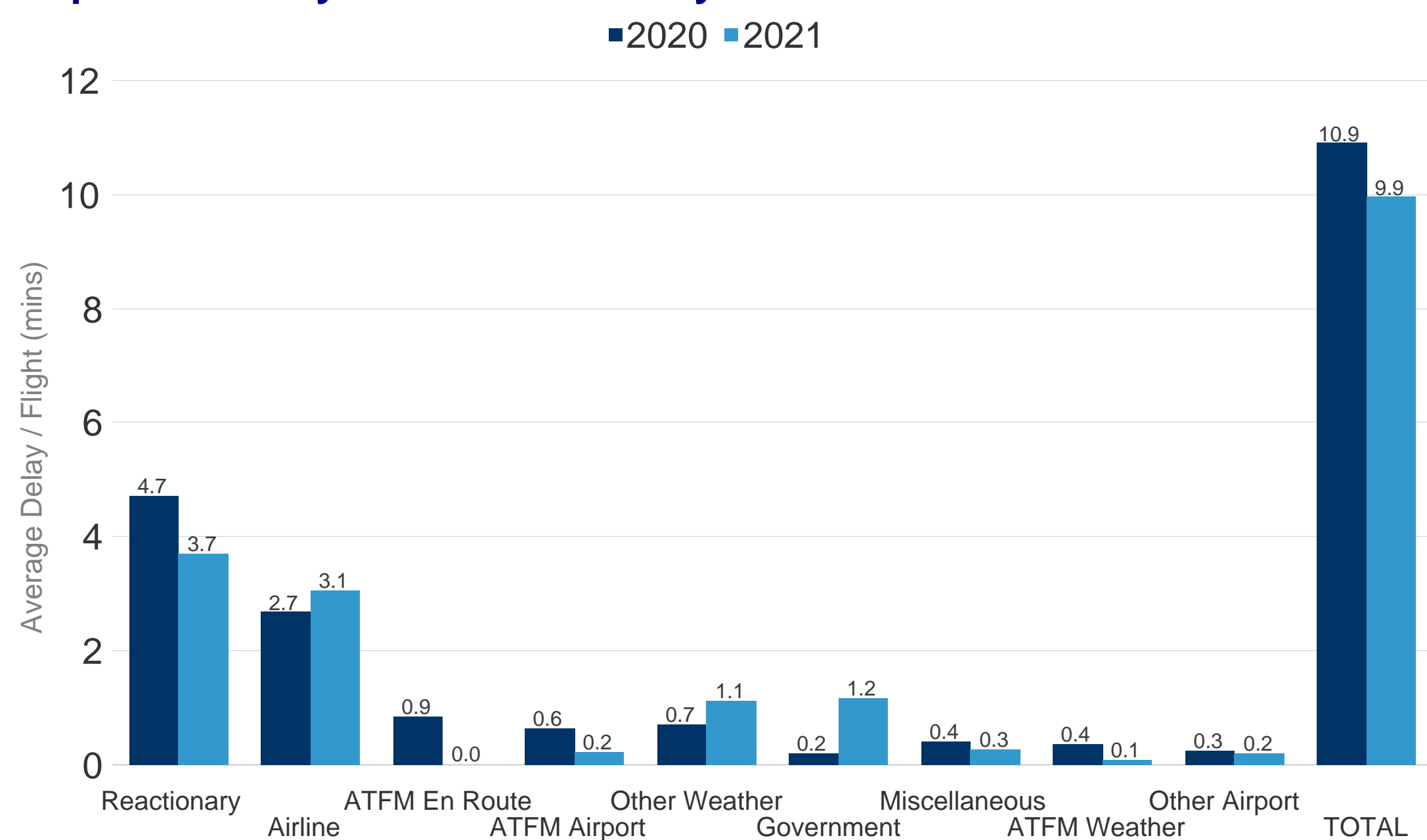


In February 2021 the average delay per flight on departure was 9.9 minutes per flight. This was a **decrease** of 1.0 minutes per flight when compared to February 2020 where the average delay per flight was 10.9 minutes.

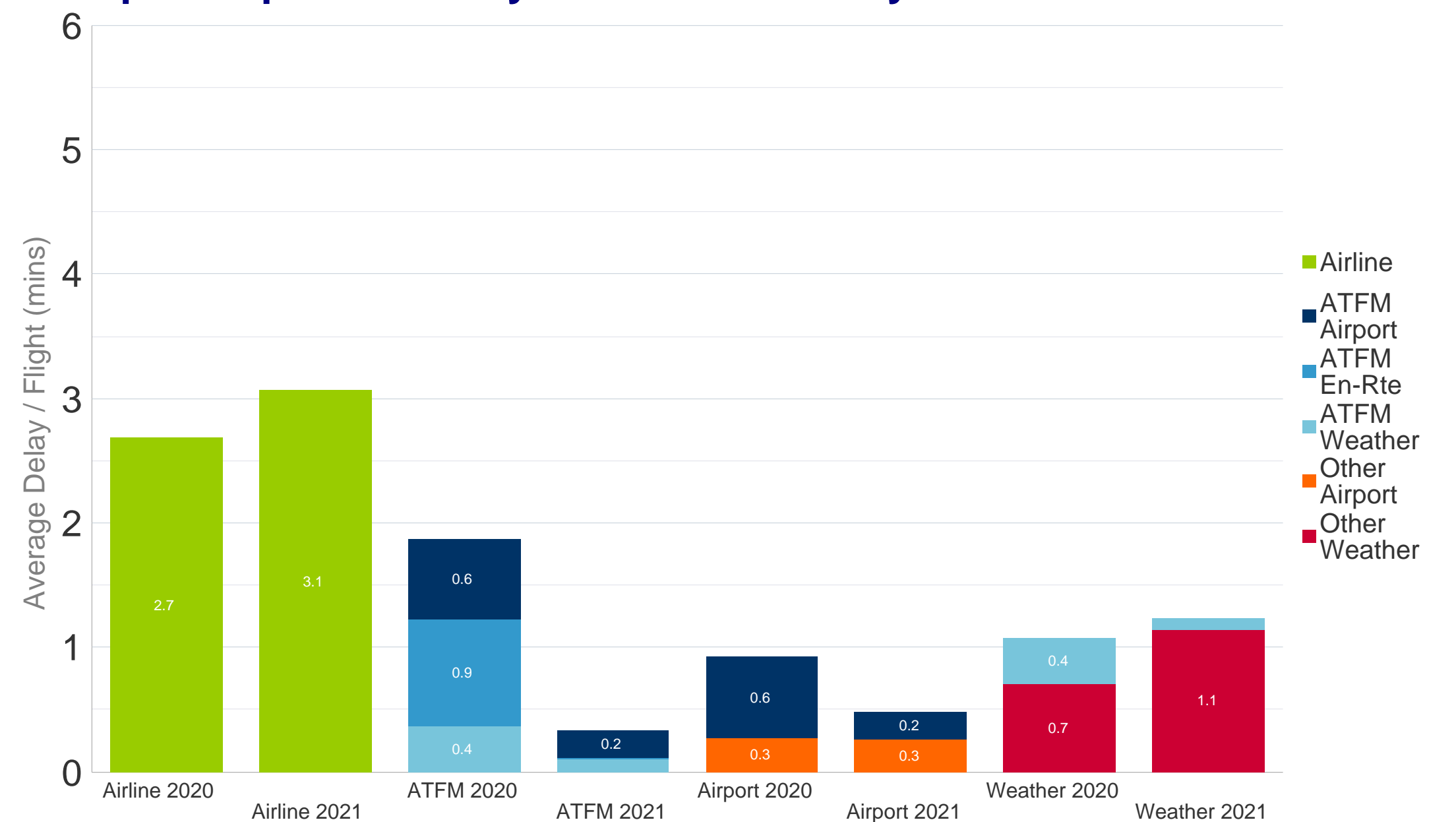
In February 2021 the average delay per flight on arrival was 9.3 minutes per flight. This was a **decrease** of 1.2 minutes per flight when compared to February 2020 where the average delay per flight was 10.5 minutes.

Further analysis of the delay causes shows that reactionary delay contributed 3.7 minutes to the average delay per flight in February 2021.

Departure Delay Causes - February 2021



Grouped Departure Delay Causes - February 2021



The First Look at Delays is based on partial airline data to be updated once the full dataset is available. Current CODA Coverage of IFR Flights in ECAC February 2021: 36.8%
Date of publication: 22/03/2021 Eurocontrol TLP status: White (Public Information)

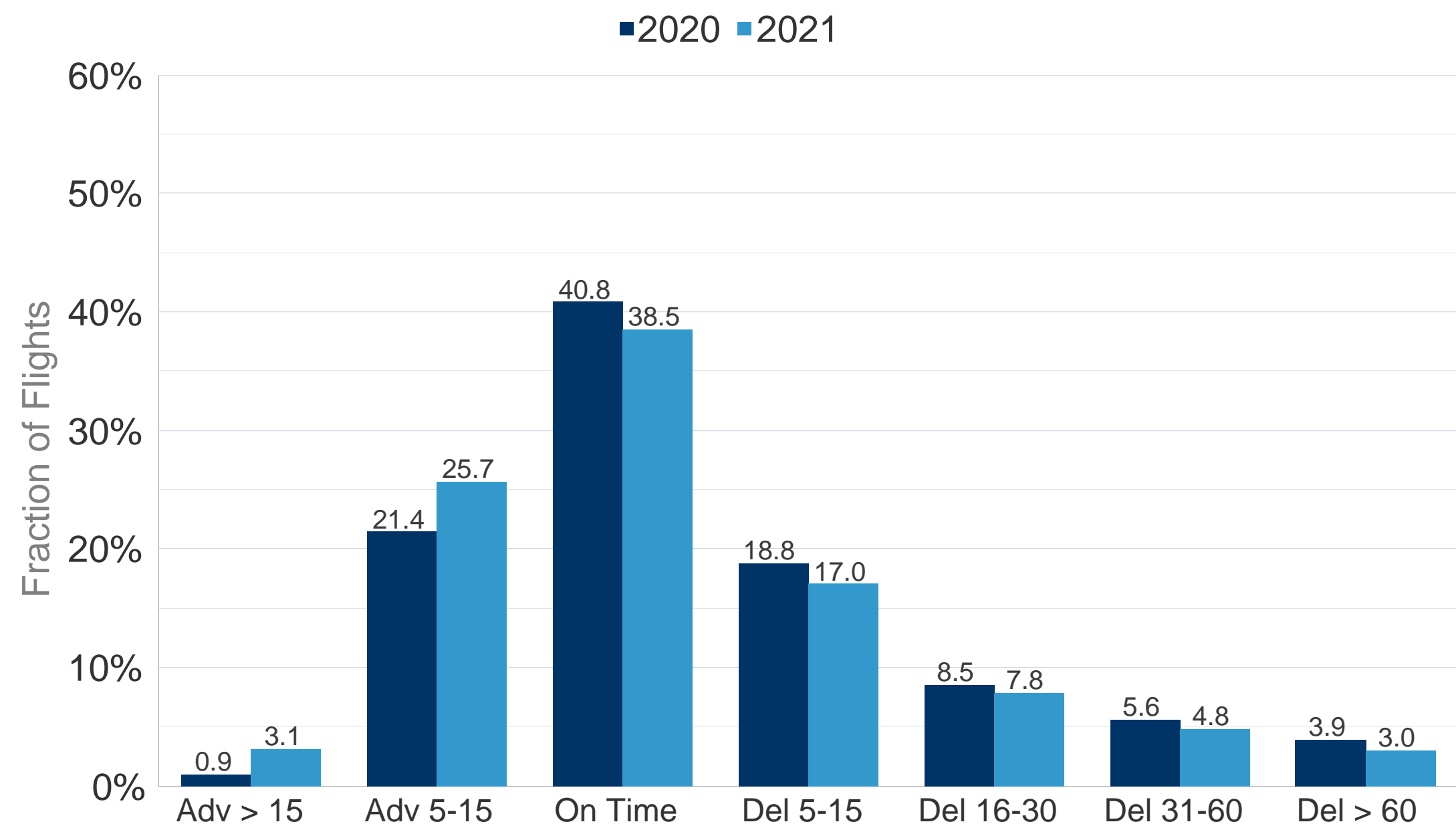
SUPPORTING EUROPEAN AVIATION



NETWORK MANAGER

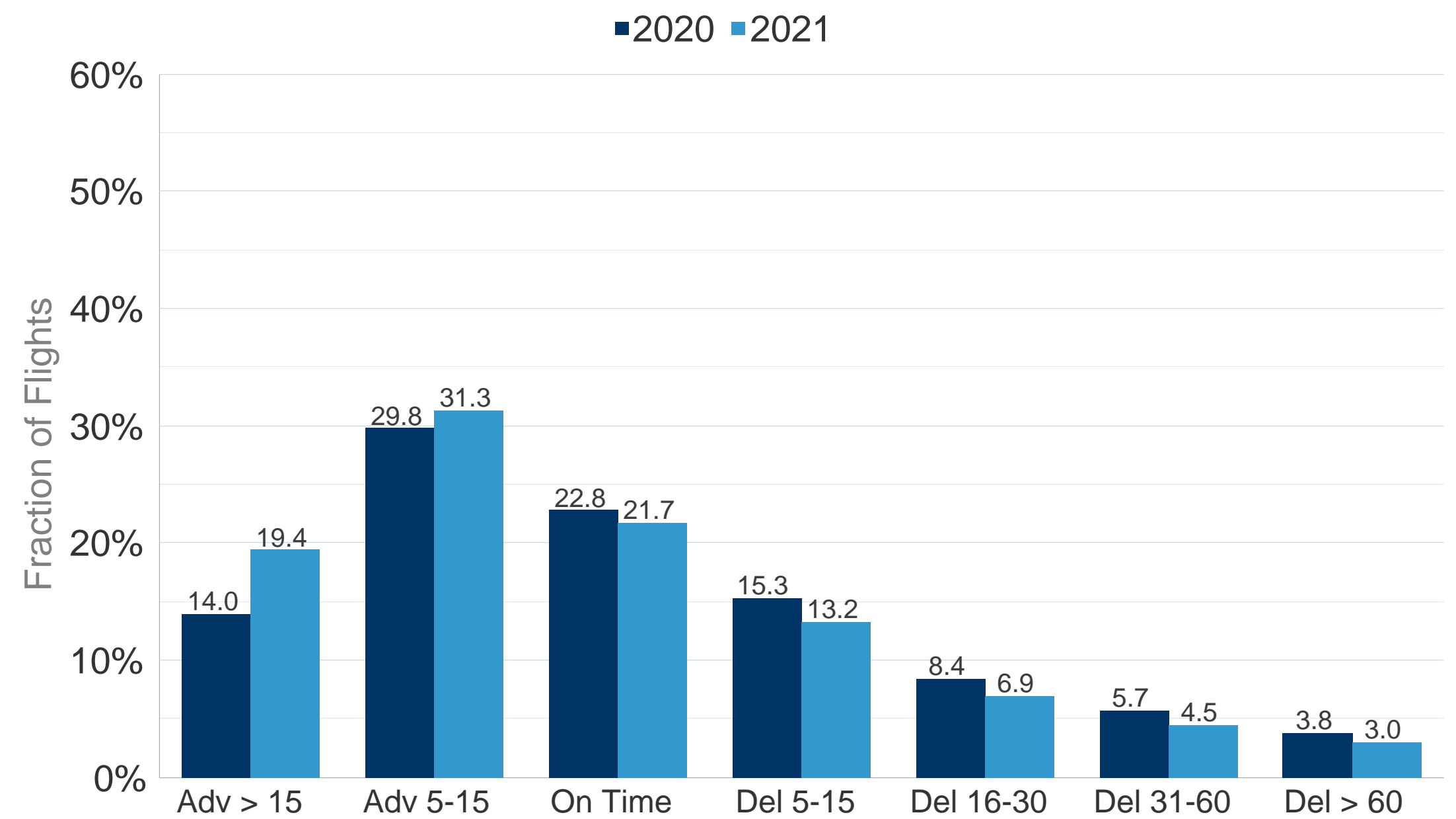


All Causes Departure Punctuality - February 2021



In February 2021, 38.5% of the flights departed within the 5 minutes threshold before or after the scheduled departure time (STD); **a decrease** of 2.3 points from 40.8% compared to previous year. Flights delayed >30 minutes from all-causes **decreased** from 9.5% to 7.8%.

All Causes Arrival Punctuality - February 2021

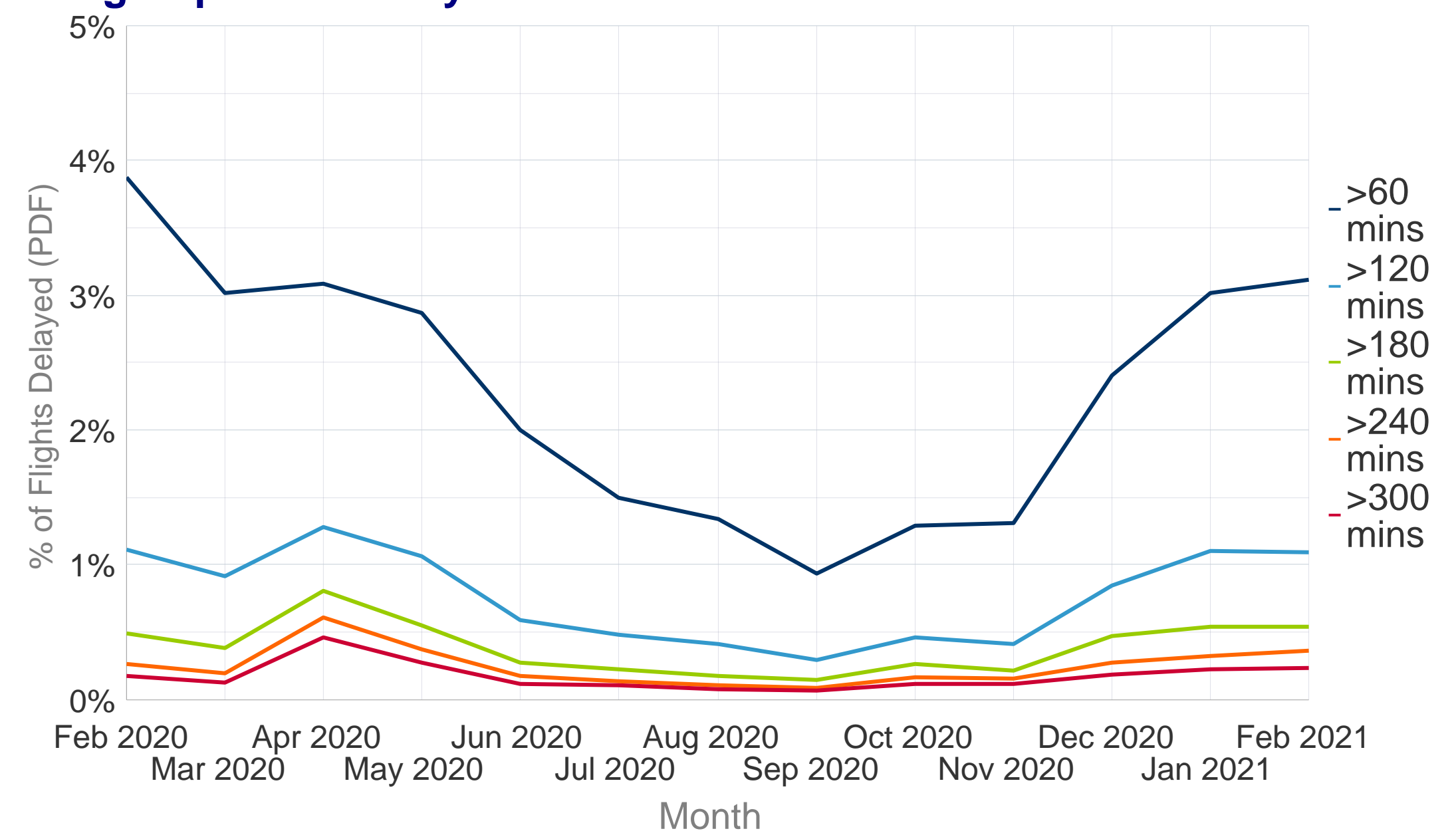


In February 2021, 21.7% of the flights arrived within the 5 minutes threshold before or after the scheduled arrival time (STA); **a decrease** of 1.0 points from 22.8% compared to previous year. Flights delayed >30 minutes from all-causes **decreased** from 9.5% to 7.5%.

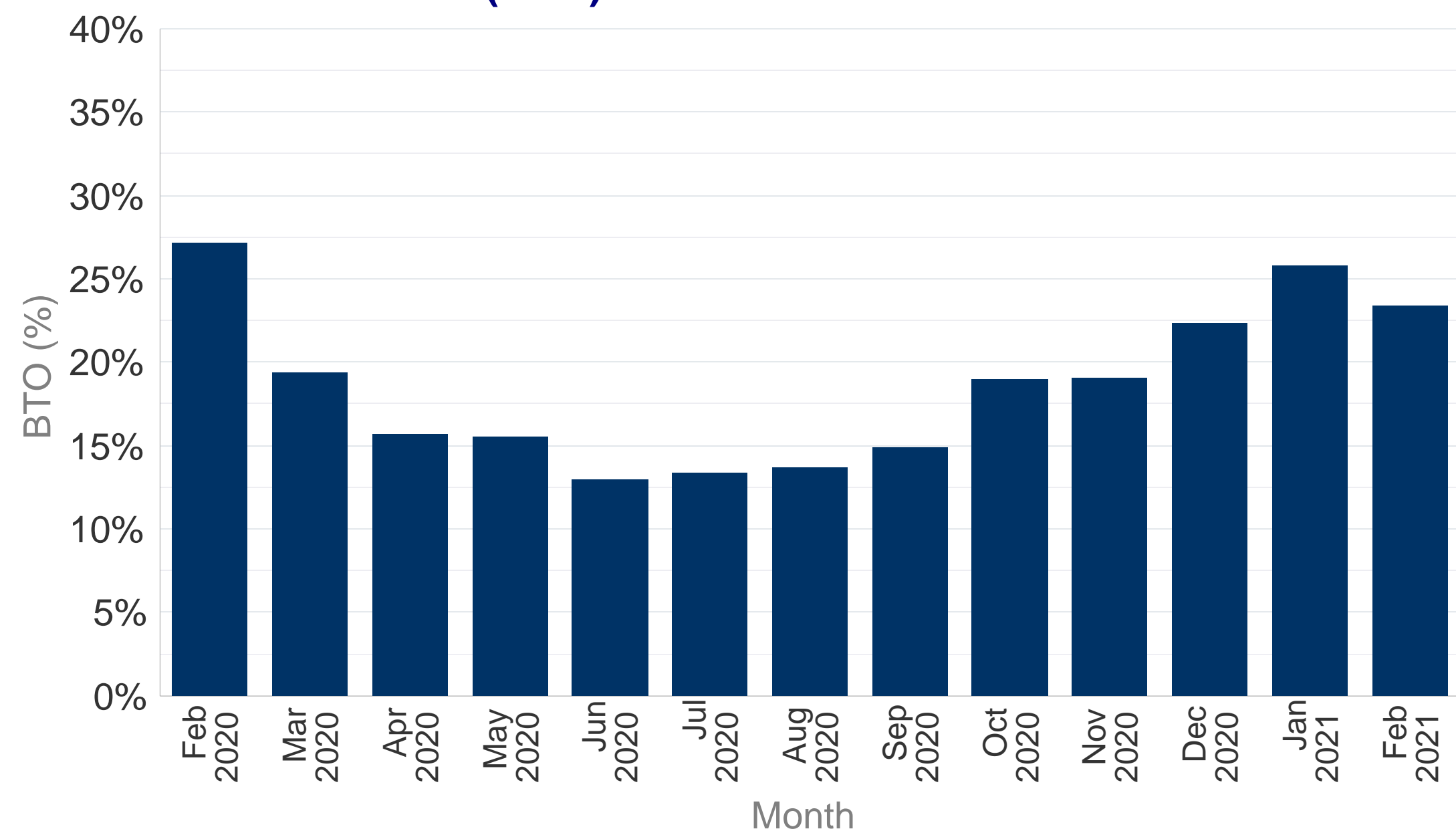
Average daily flights for ECAC. All flows



Long Departure Delays All-Causes



Block Time Overshoot (BTO)



Delay Difference Indicator - Flight (DDI-F)

