

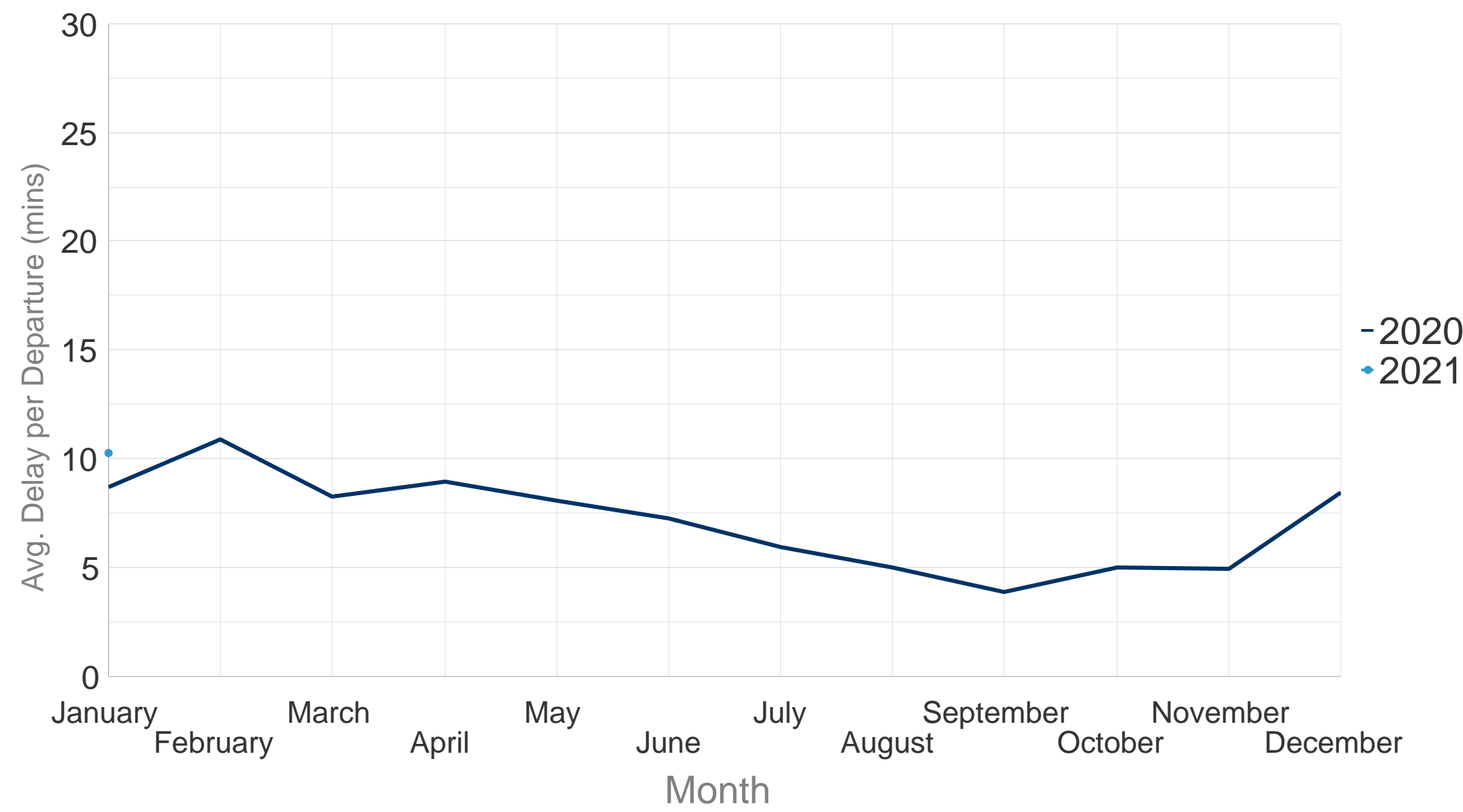
# All-Causes Delay to Air Transport in Europe



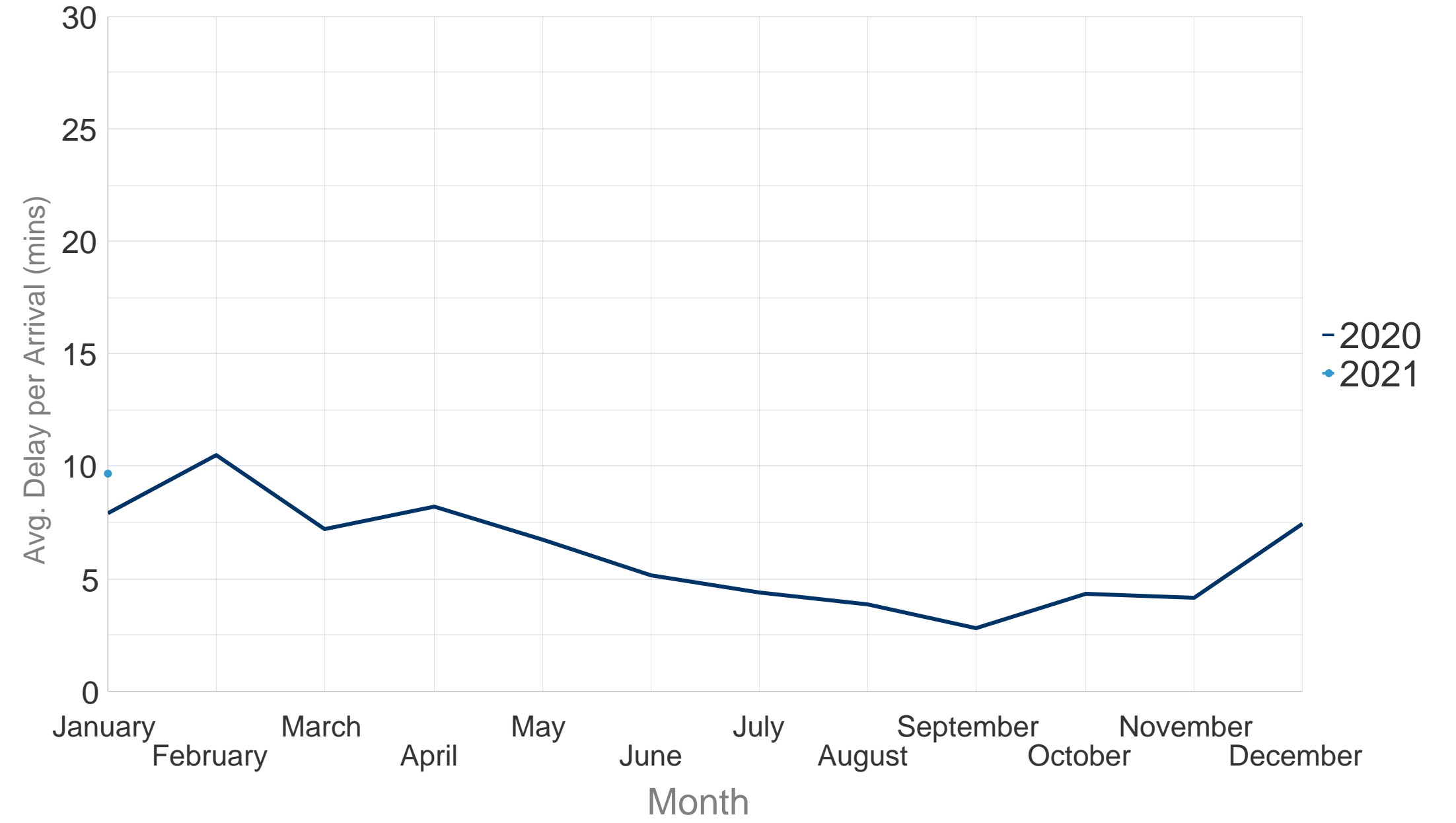
## January 2021

Network traffic fell by 63.7% compared to January 2019, due to the effect of the COVID-19 pandemic. Turkish Airlines was the busiest airline followed by Air France and Ryanair. Amsterdam/Schiphol was the busiest airport followed by Paris Charles de Gaulle, Frankfurt Main and Istanbul Sabiha Gökçen. Weather conditions (snow and strong winds) affected operations at Madrid, Marseille and Leipzig airport.

### Average Delay per Flight on Departure (mins) - January 2021



### Average Delay per Flight on Arrival (mins) - January 2021

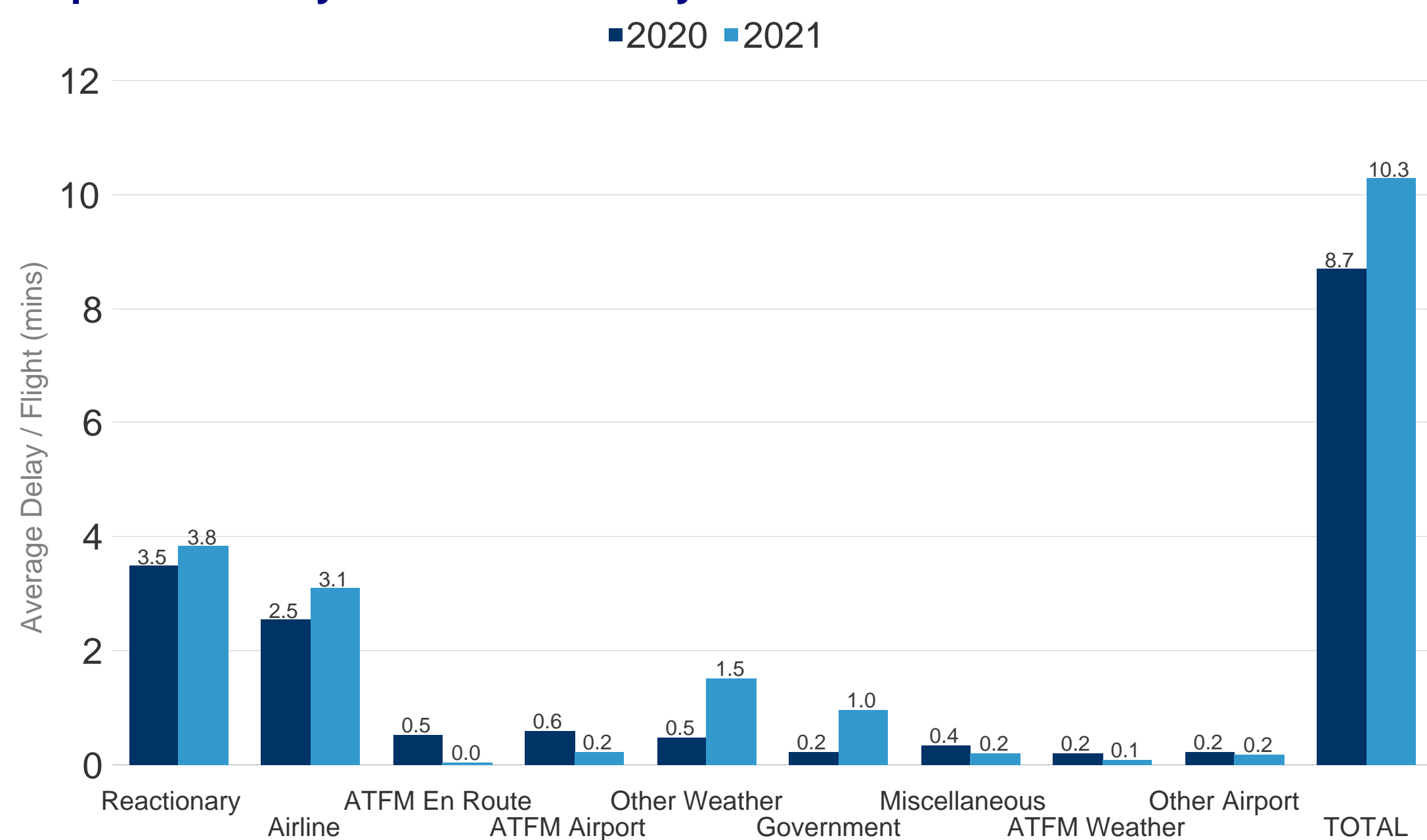


In January 2021 the average delay per flight on departure was 10.3 minutes per flight. This was **an increase** of 1.5 minutes per flight when compared to January 2020 where the average delay per flight was 8.7 minutes.

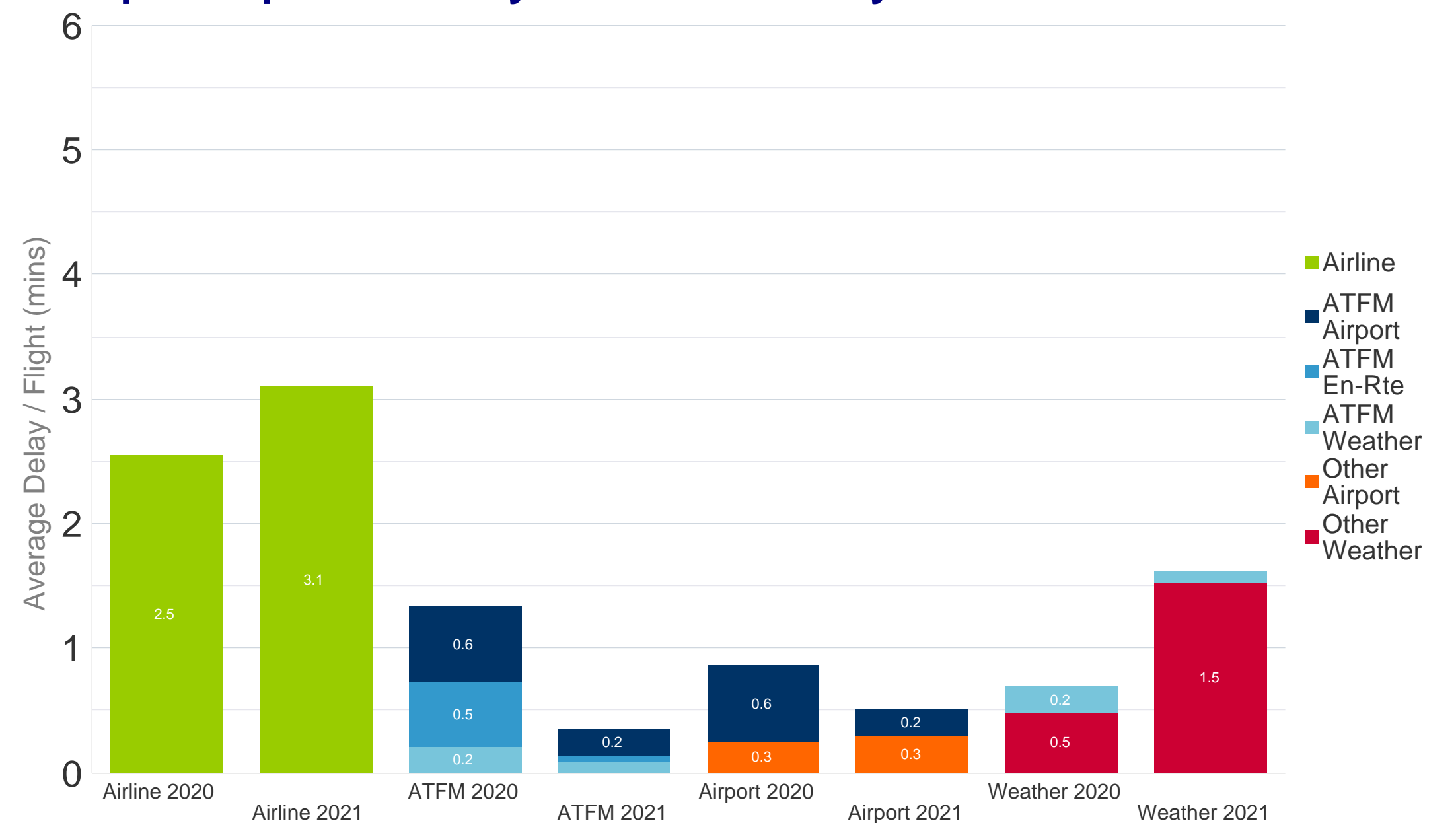
In January 2021 the average delay per flight on arrival was 9.7 minutes per flight. This was **an increase** of 1.8 minutes per flight when compared to January 2020 where the average delay per flight was 7.9 minutes.

Further analysis of the delay causes shows that reactionary delay contributed 3.8 minutes to the average delay per flight in January 2021.

### Departure Delay Causes - January 2021



### Grouped Departure Delay Causes - January 2021



The First Look at Delays is based on partial airline data to be updated once the full dataset is available. Current CODA Coverage of IFR Flights in ECAC January 2021: 39%  
Date of publication: 22/02/2021 Eurocontrol TLP status: White (Public Information)

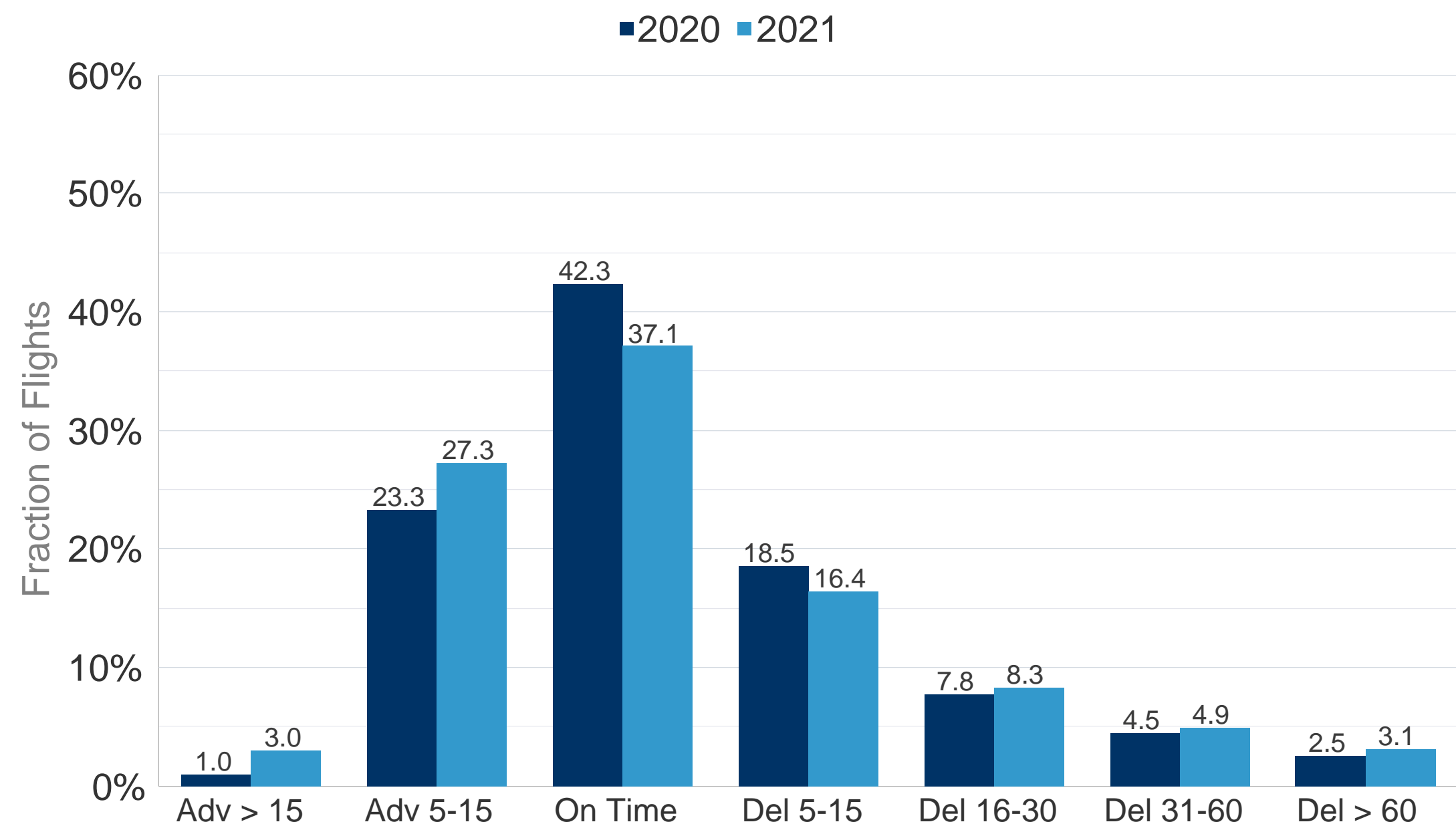
SUPPORTING EUROPEAN AVIATION



NETWORK MANAGER

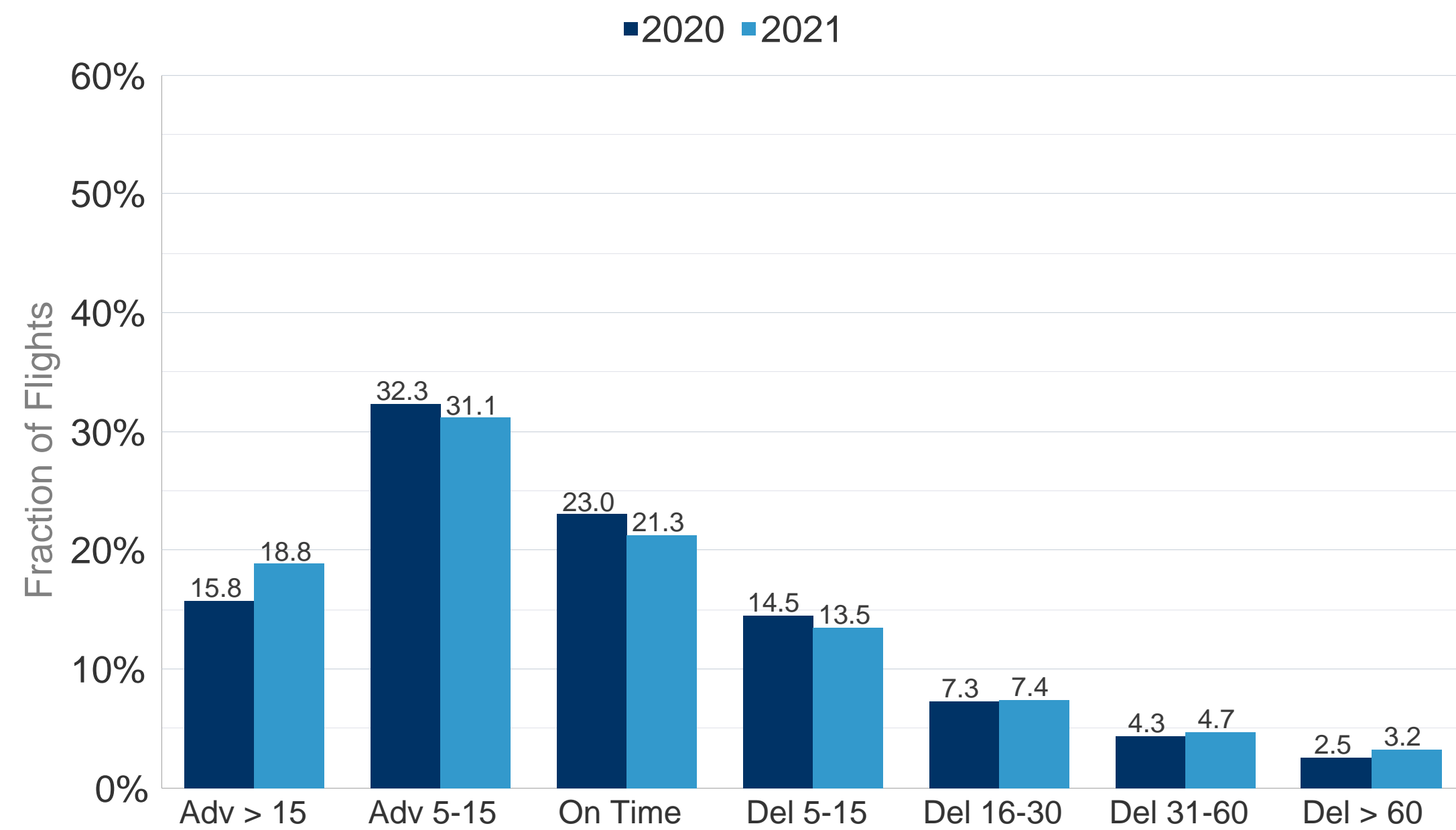


### All Causes Departure Punctuality - January 2021



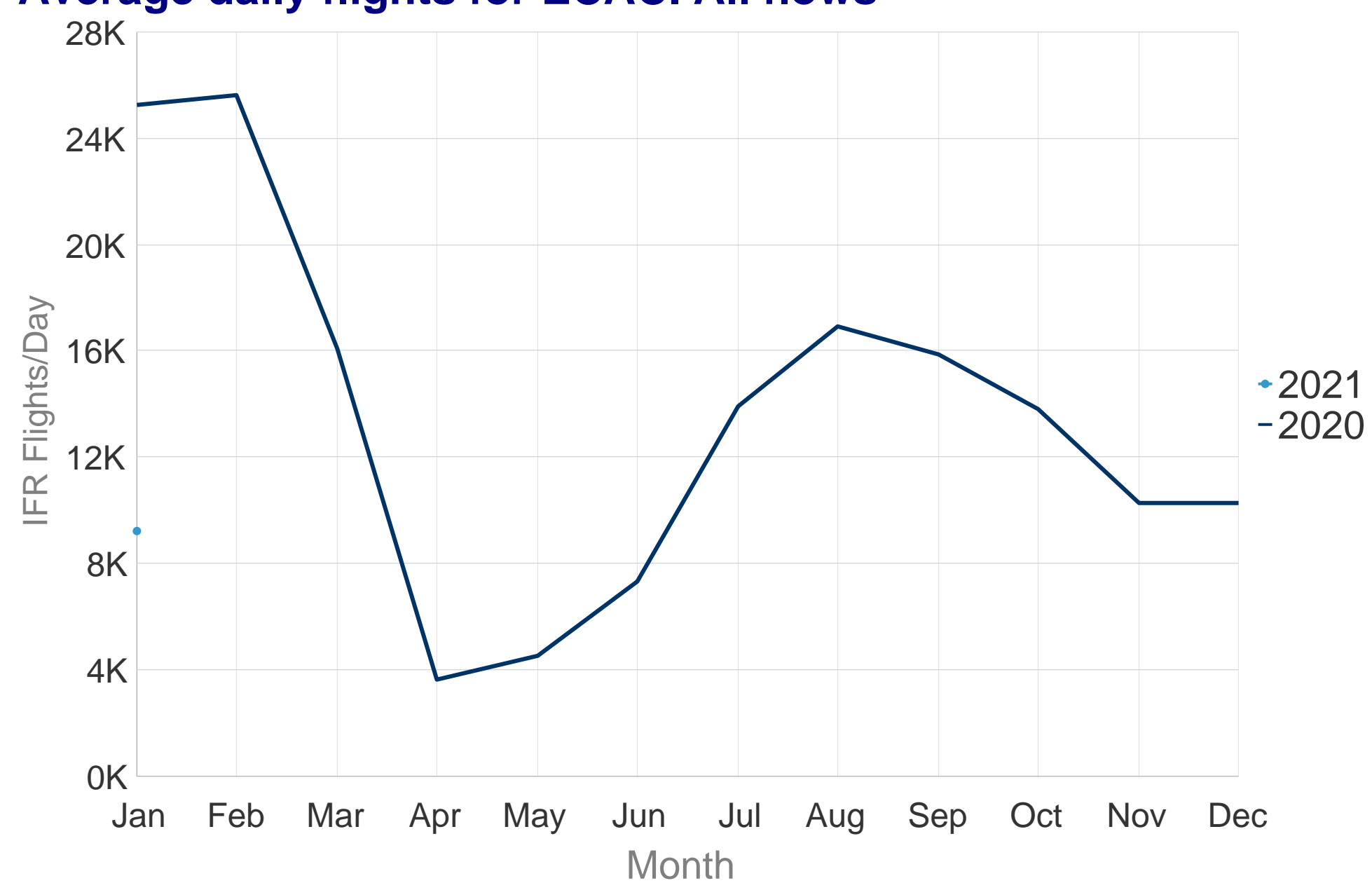
In January 2021, 37.1% of the flights departed within the 5 minutes threshold before or after the scheduled departure time (STD); a decrease of 5.2 points from 42.3% compared to previous year. Flights delayed >30 minutes from all-causes increased from 7.0% to 7.9%.

### All Causes Arrival Punctuality - January 2021

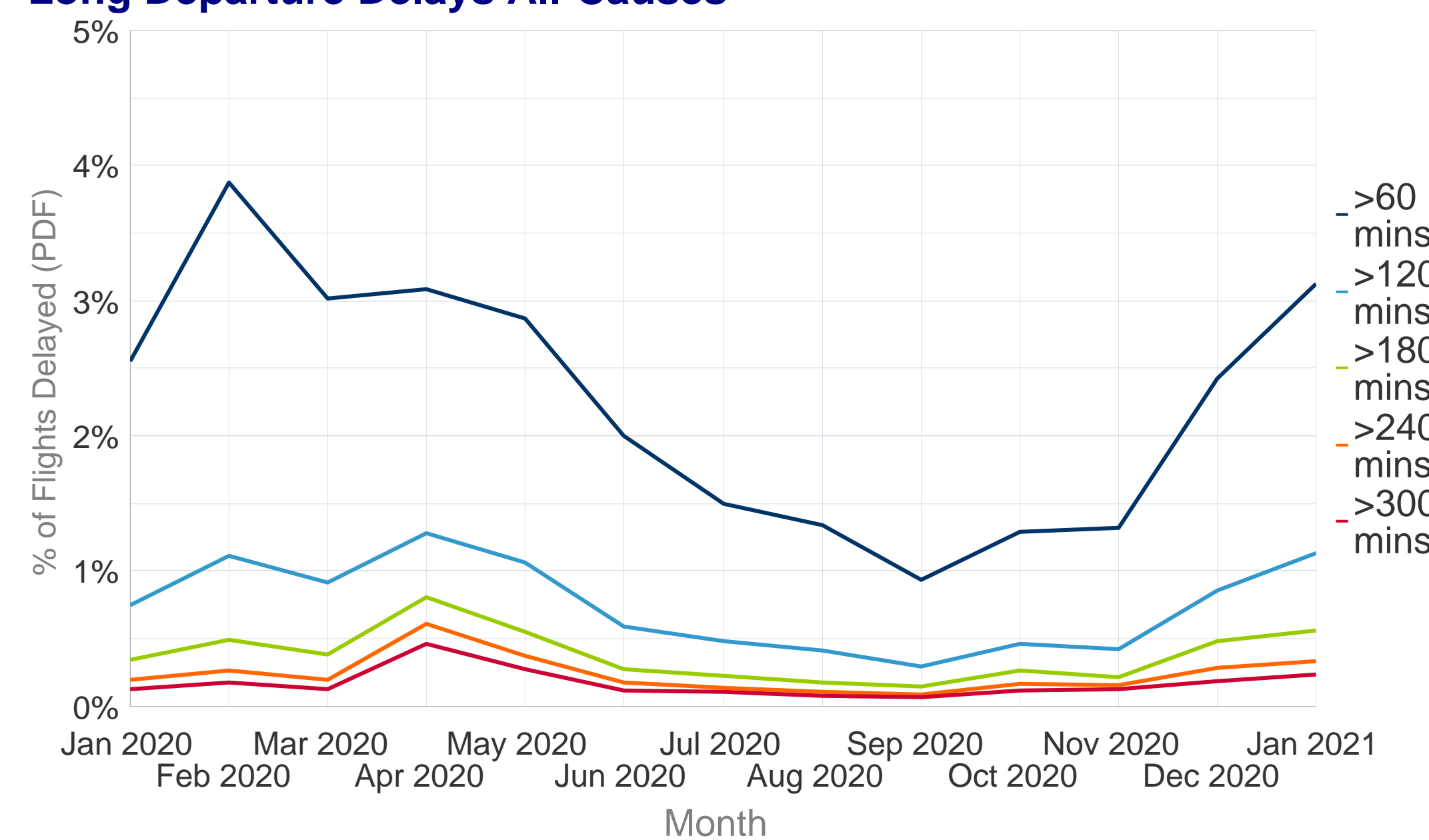


In January 2021, 21.3% of the flights arrived within the 5 minutes threshold before or after the scheduled arrival time (STA); a decrease of 1.7 points from 23.0% compared to previous year. Flights delayed >30 minutes from all-causes increased from 6.8% to 7.9%.

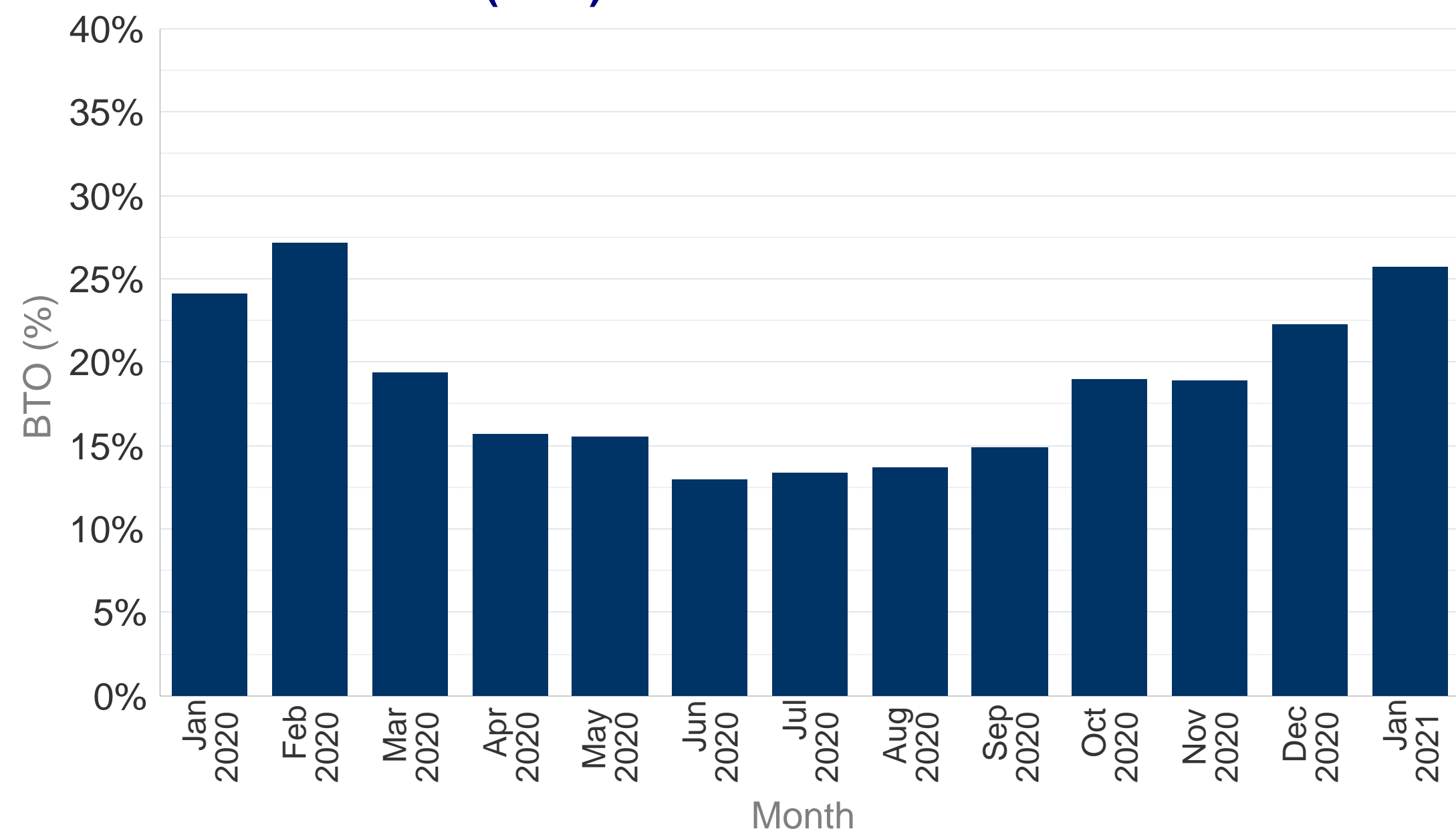
### Average daily flights for ECAC. All flows



### Long Departure Delays All-Causes



### Block Time Overshoot (BTO)



### Delay Difference Indicator - Flight (DDI-F)

