

# Managing transformation

## An Enterprise Architecture contribution to developing standards

10 November 2020

Wim Post

Head of Unit Master Plan and Architecture



## What to take away from this presentation

Standards shall not be considered in isolation; they need to make sense for our business as a whole.

We need a new 'standard' defining what our business is about, not how we implement it.

A holistic view on ATM transformation facilitates the identification of standardisation needs, in particular business-defined interfaces.

# The ATM Master Plan perspective on the future of ATM

## Deliver challenging performance improvements

- Exploit service orientation (incl. SWIM) , digitalisation and automation (incl. A.I.)

## Disconnect deployment and service delivery from location.

- Airspace Architecture Study realisation
- ATM Data Services
- Capacity on demand
- X-border service provision



# Main challenges of digital business transformations

Remain  
business value  
focused

Use holistic  
business  
perspective

Overcome  
'pillar' thinking

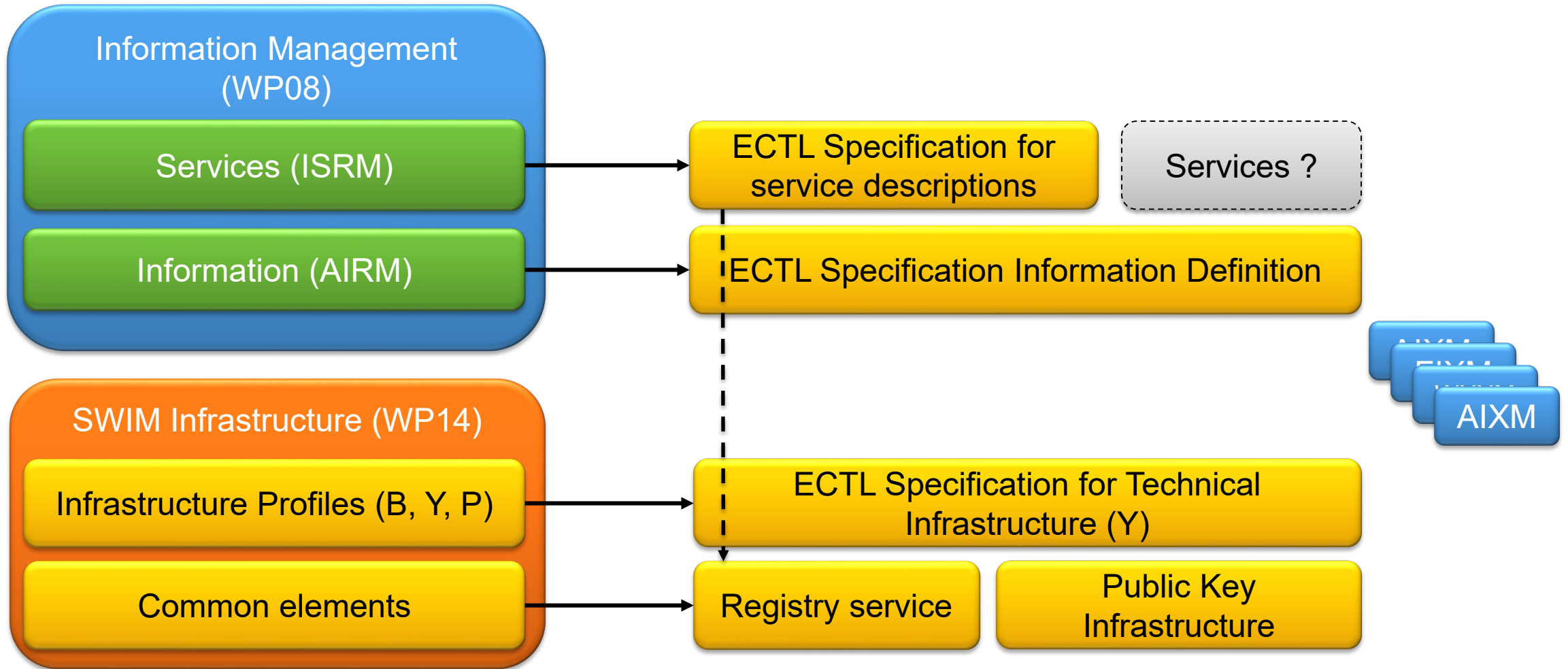
Align business,  
systems,  
information

Balance agility  
versus stability

Handle rapid  
technology  
evolution

Control  
integration cost

# SESAR SWIM History



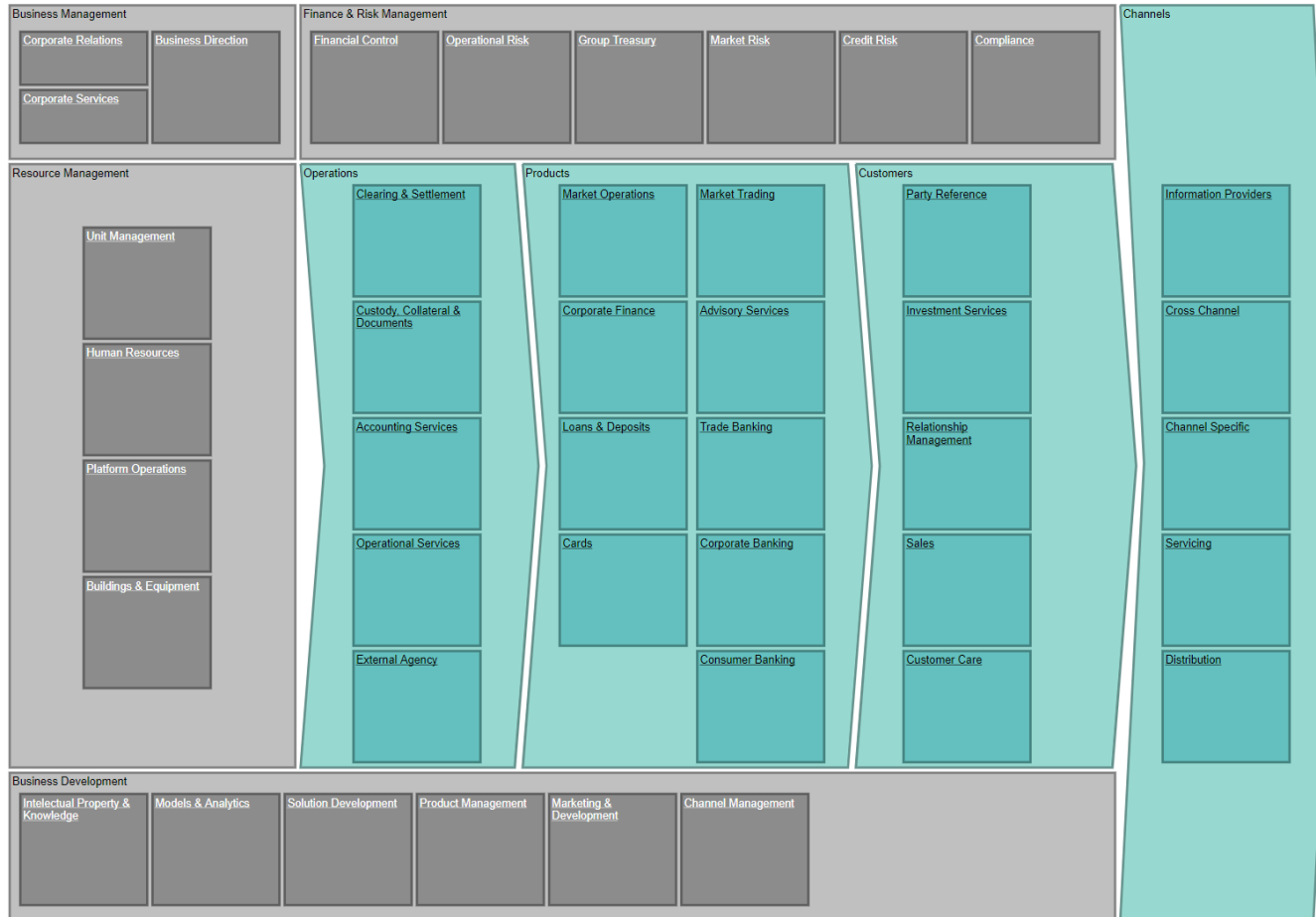
SESAR 1

PCP/(CP1)



# The Banking industry architecture network (BIAN) as an example

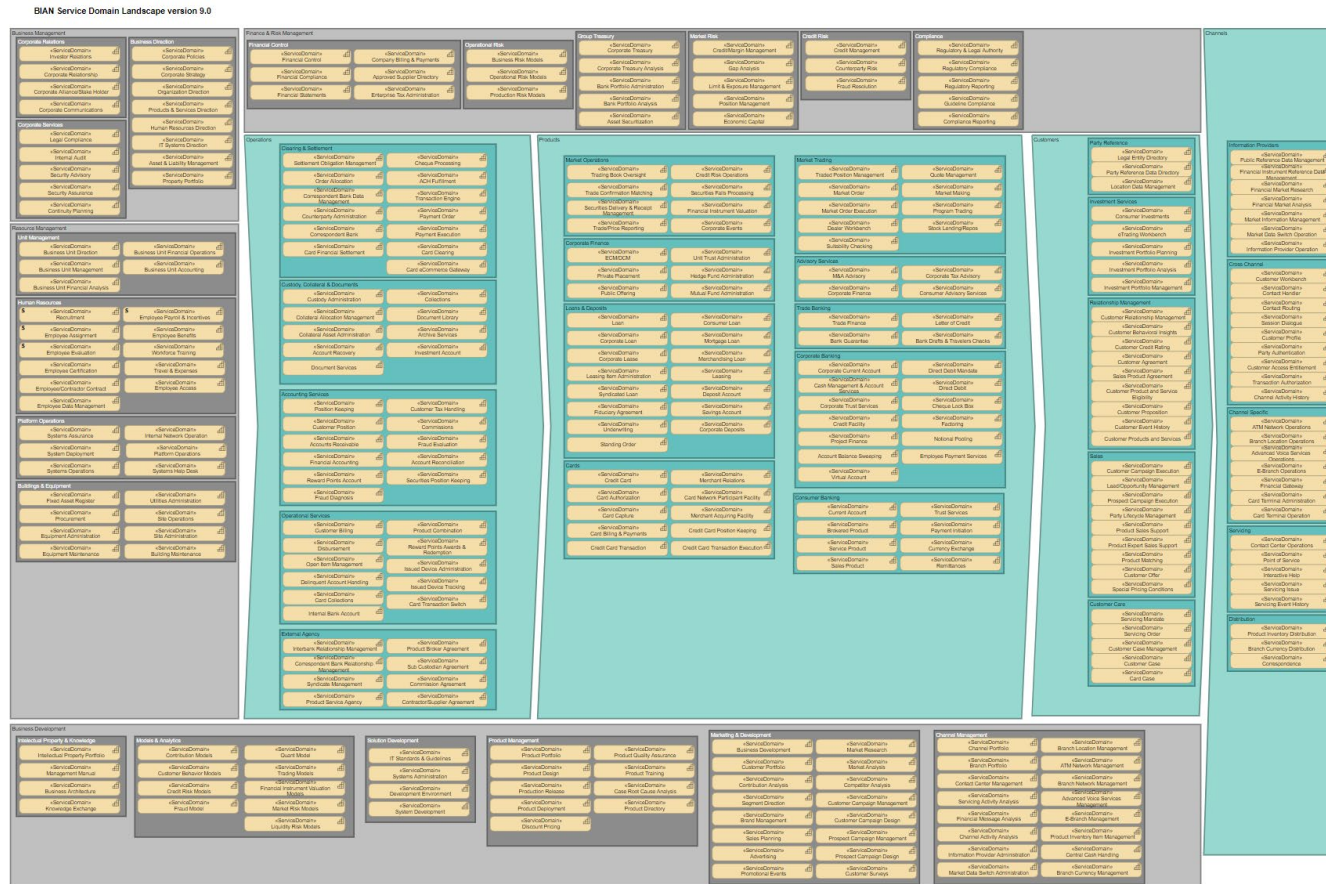
BIAN Service Domain Landscape version 9.0\_  
Service Domain Overview Diagrams



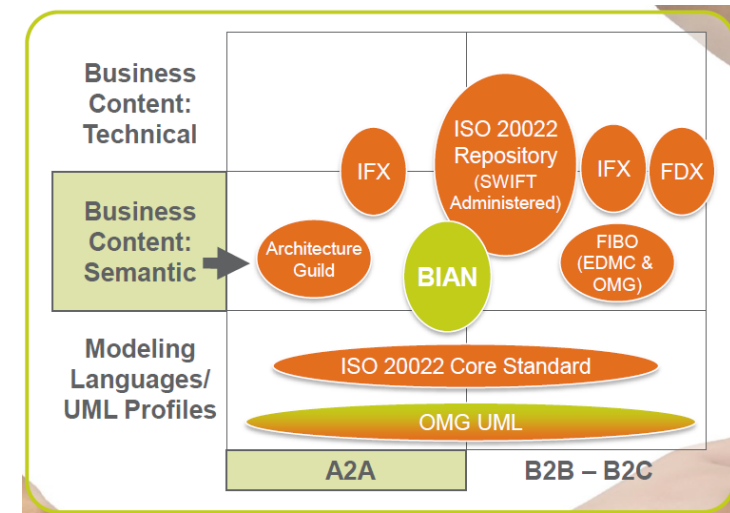
The top-level **service domain overview** covering the value chain of the whole business of banking\*

\* from BIAN.org

# The Banking industry architecture network (BIAN) as an example



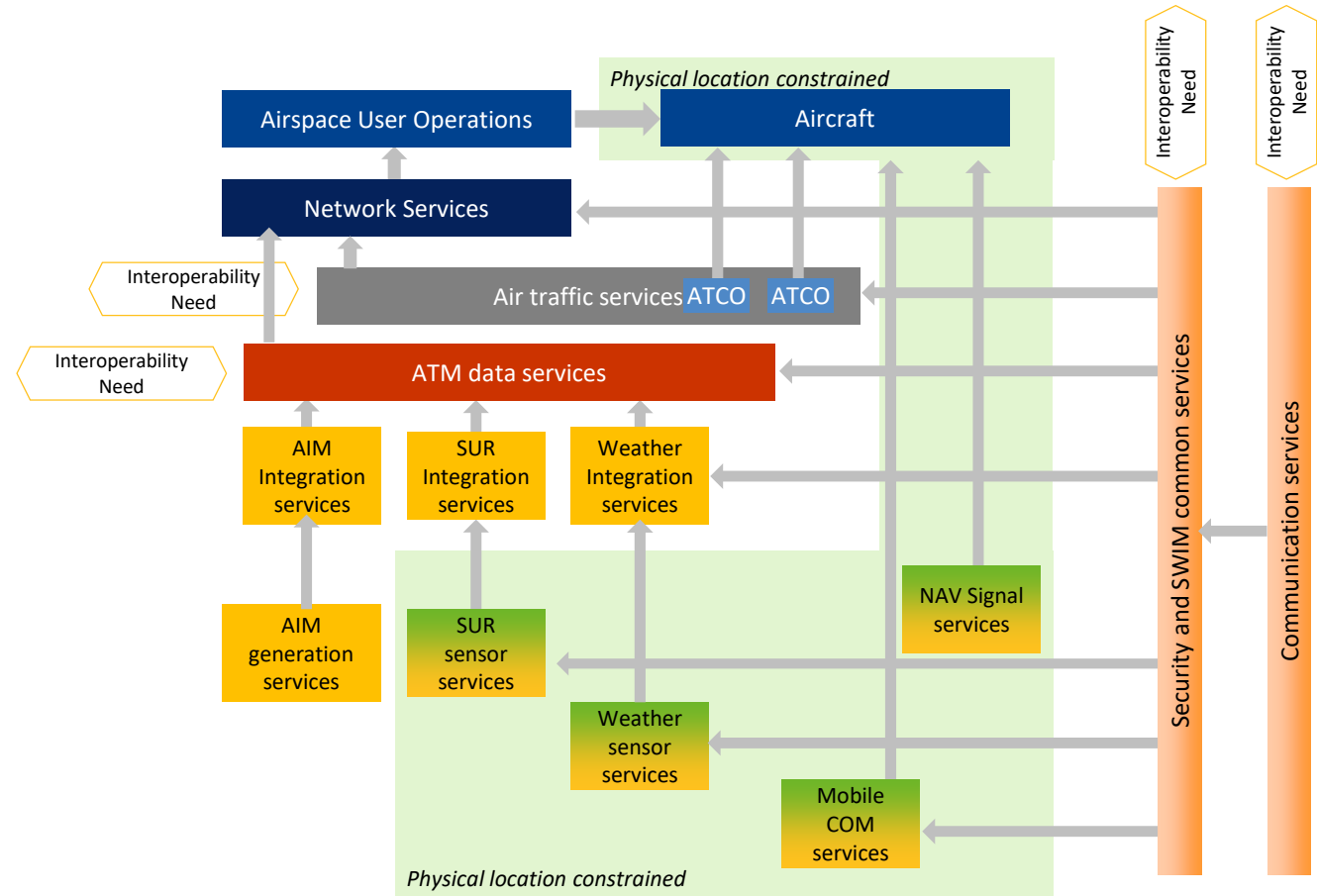
Mapping all banking services in the BIAN landscape on the top-level value-chain framework\*



\* from BIAN.org

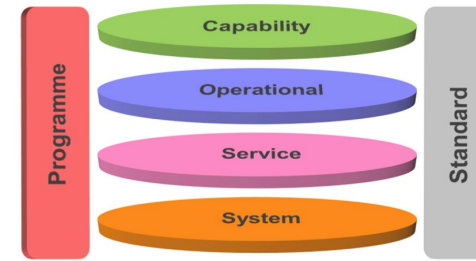
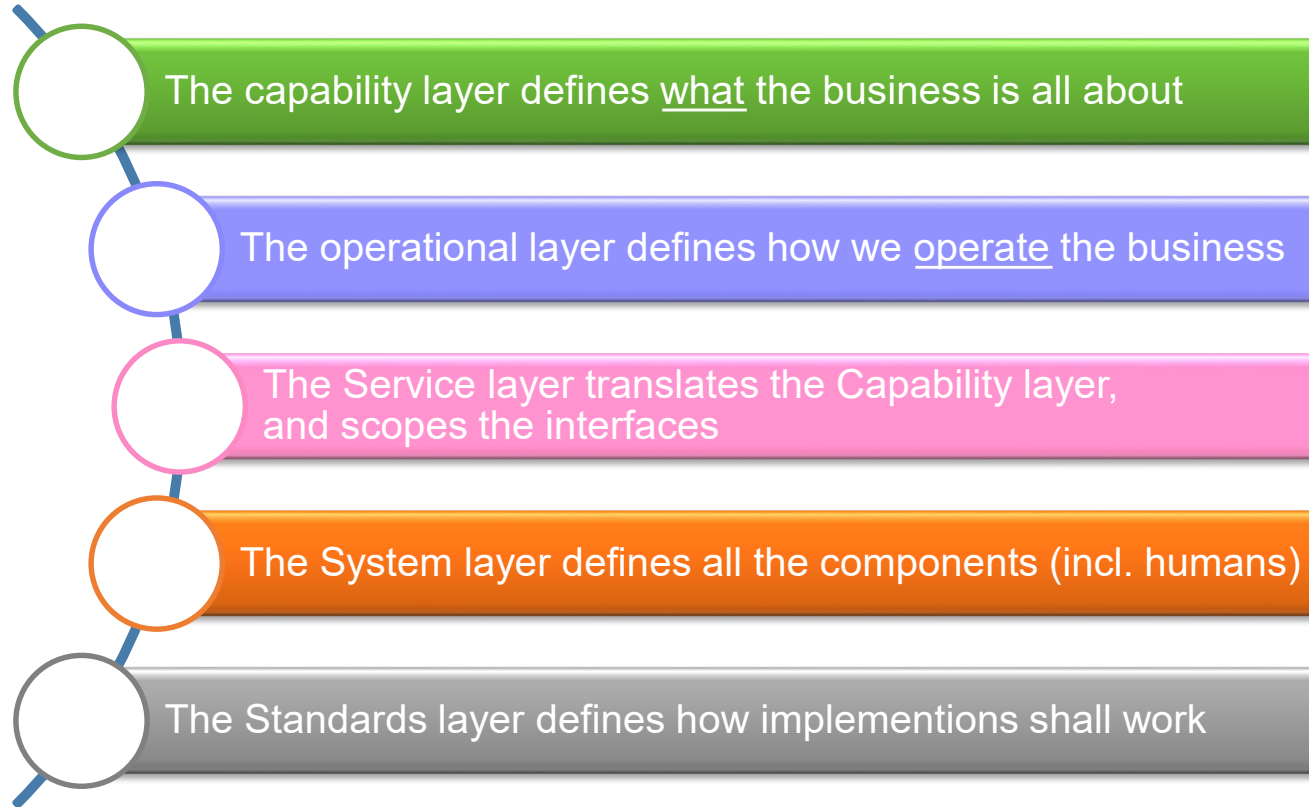
# The Airspace Architecture Study top-level service landscape

- A top-level service framework for the whole business
- Disconnects services as much as possible from physical location
- Open to different business choices – supports stepped migration
- Does not prescribe technical implementation – open to technology evolution



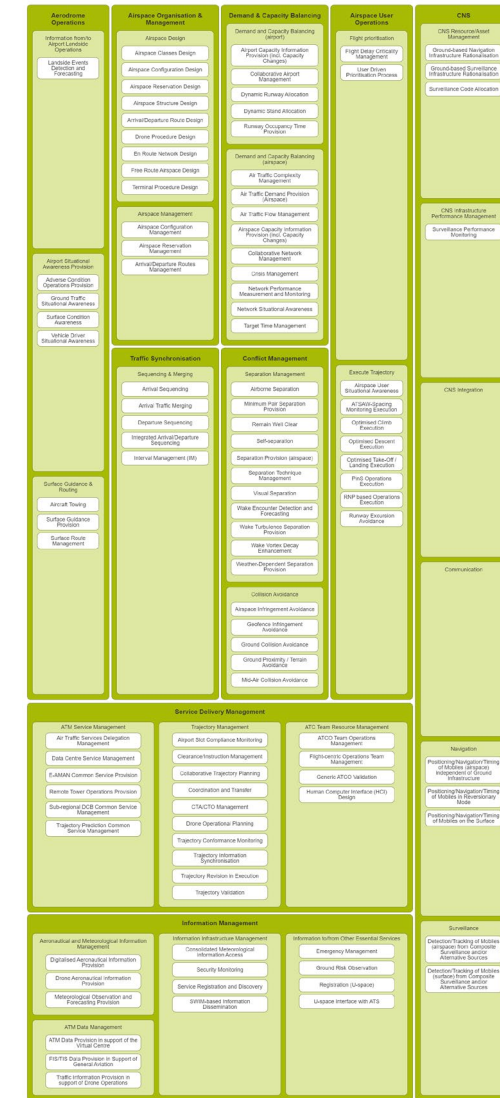


# The enterprise architecture approach aligns standards with business.



- The European ATM Architecture (EATMA) from SESAR provides the best possible starting point to ensure fit for purpose standards that support the Airspace Architecture.

- Also a reference for regulation and compliance?



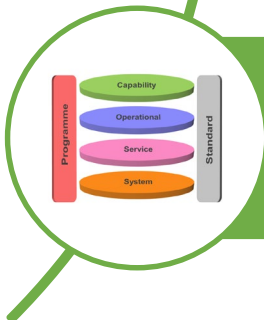
# In Summary



The ATM business of the future depends more and more on collaboration between operational stakeholders, their regulators and their suppliers. Need a shared understanding

## WHAT

We need a standard to define **'what'** ATM is, to complement the standards that define **'how'** we implement it.



The Enterprise Architecture framework (EATMA) of SESAR provides the best possible starting point to complement the **'how'** with the **'what'** in a holistic ATM business perspective.