

Supporting
European
Aviation



Network Benefits for harmonised scenarios

Paul Bosman, Head of Infrastructure Division

10 November 2020



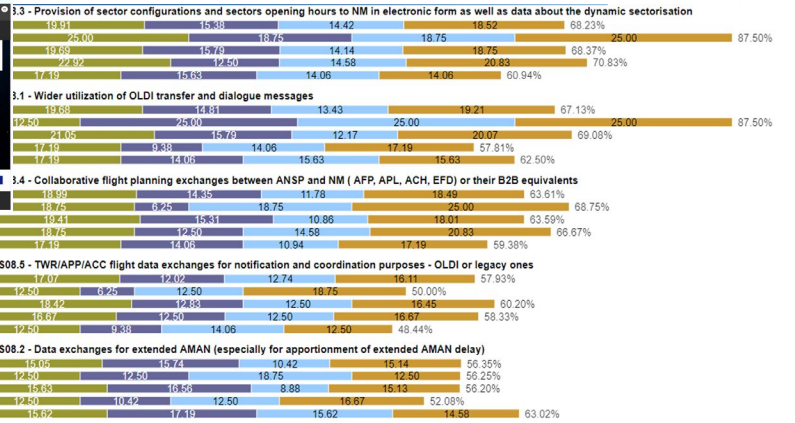
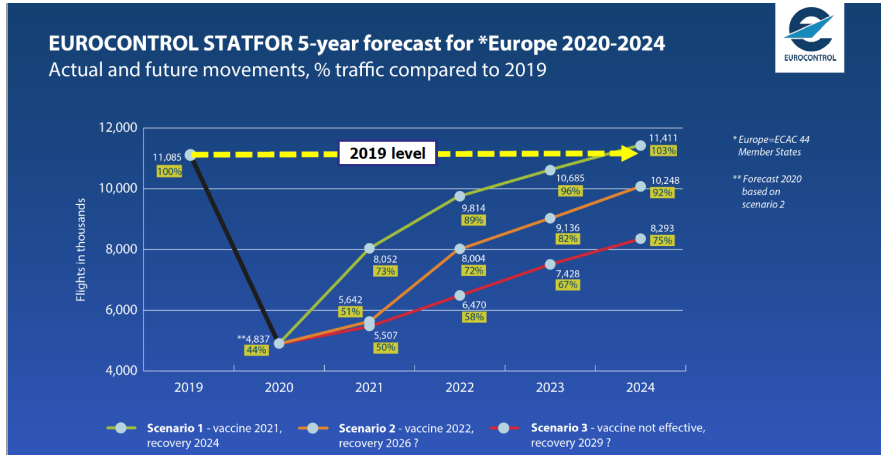
NETWORK
MANAGER



Planning – Deploying – Monitoring European ATM digital infrastructure in Partnership



Planning



1. In
2. Study
3. Out

The Operational Excellence Plan



- Operations

- WST 01 ATS procedures
- WST 02 Application of A-FUA
- WST 03 Application of ATFCM
- WST 04 Flight Planning Evolution
- WST 05 Enhancing sectors throughput, including occupancies
- WST 06 Operational Utilisation of Human Resources
- WST 08 Airport operational improvements, including RWY throughput
- WST 11 Post Operational Analysis

- Infrastructure side

- WST 07 ANSP/ANSP and ANSP/NM system connectivity and interoperability
- WST 09 APT Harmonised operational requirements supporting system connectivity, interoperability and implementation
- WST 10 AIM data provision harmonisation and digitalisation
- WST 12 Support operational priorities through the harmonised implementation of Datalink
- WST 13 Harmonisation of infrastructure, systems connectivity and interoperability
- WST 14 Network Resilience / Infrastructure risks

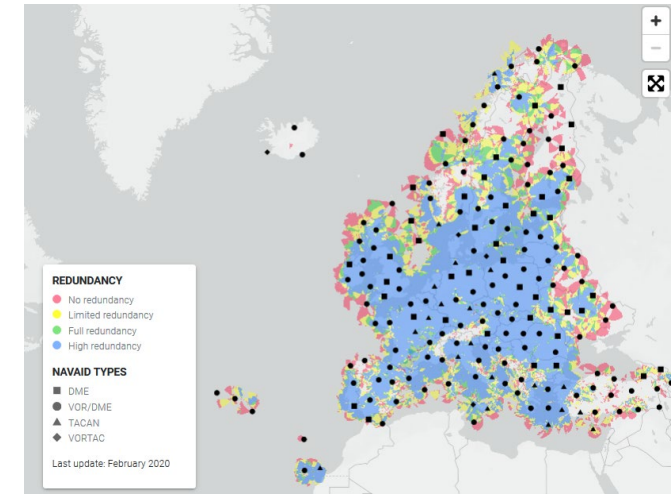
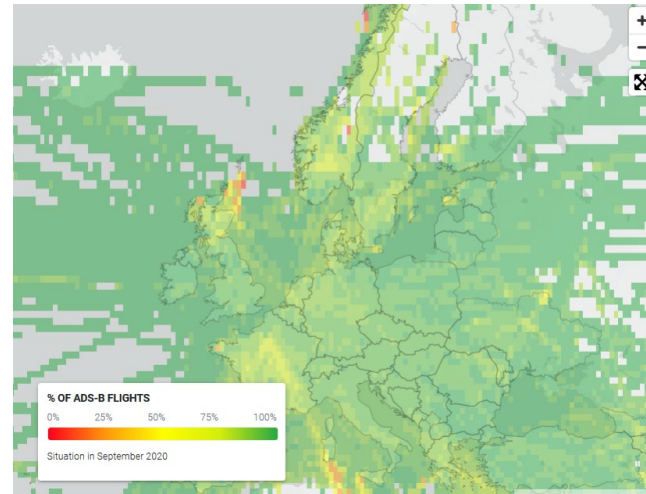
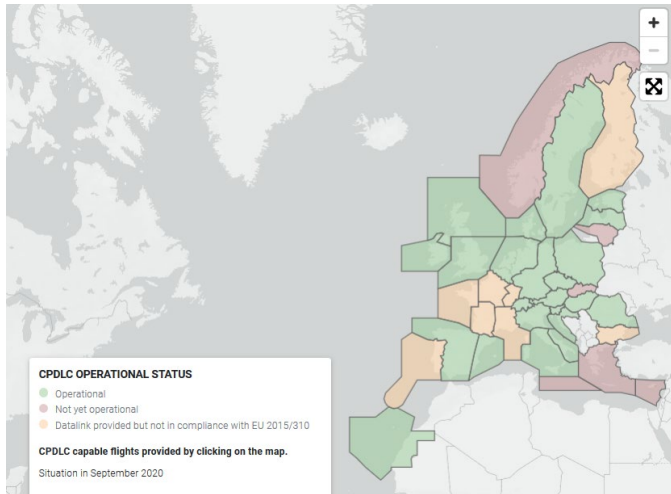


Parking lot
ATS-B2
SATCOM
Ext AMAN
Virtualisation
GBAS CATII/III
8.33 extension

Lets now ensure Standards & Guidance

Supporting Deployment

<https://www.eurocontrol.int/communications-navigation-and-surveillance>



December 2019



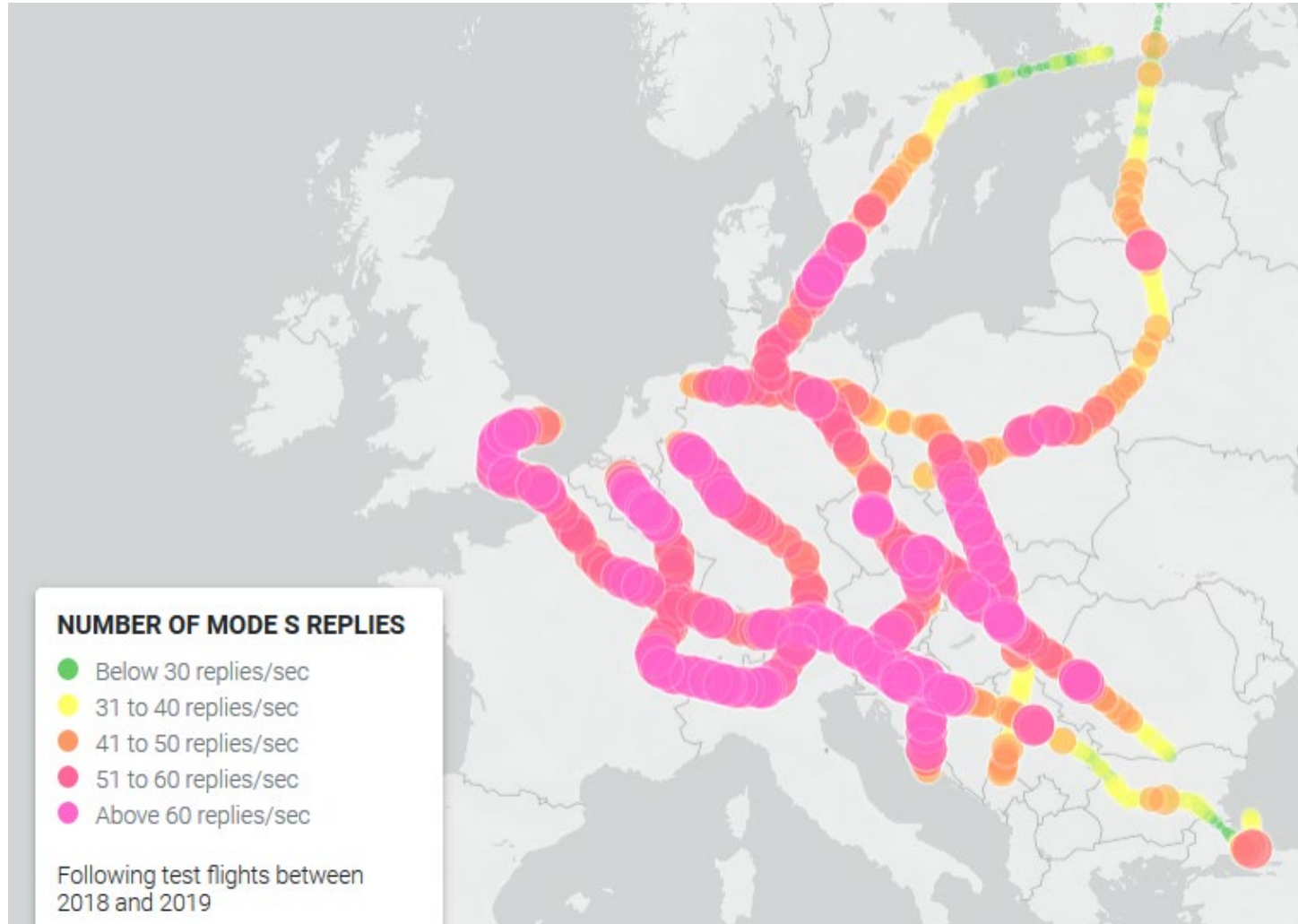
Joint Letter of Intent to European Commission

August 2020



High Level Principles for a new Partnership

Monitoring – Surveillance example



Short-term action

Long-term coordination

Equally applies to Navigation, Communication, Cyber data, ...

Towards a full digital sky

Service Orientated Architecture = SWIM

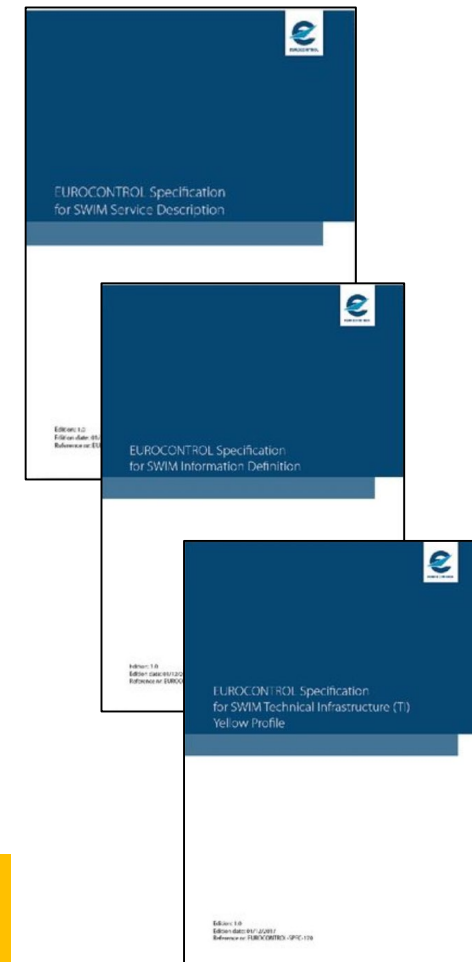
SOA is a style of software design ... The basic principles are **independent of vendors, products and technologies**

service-orientation promotes **loose coupling**

help businesses respond **more quickly and more cost-effectively** to changing market conditions

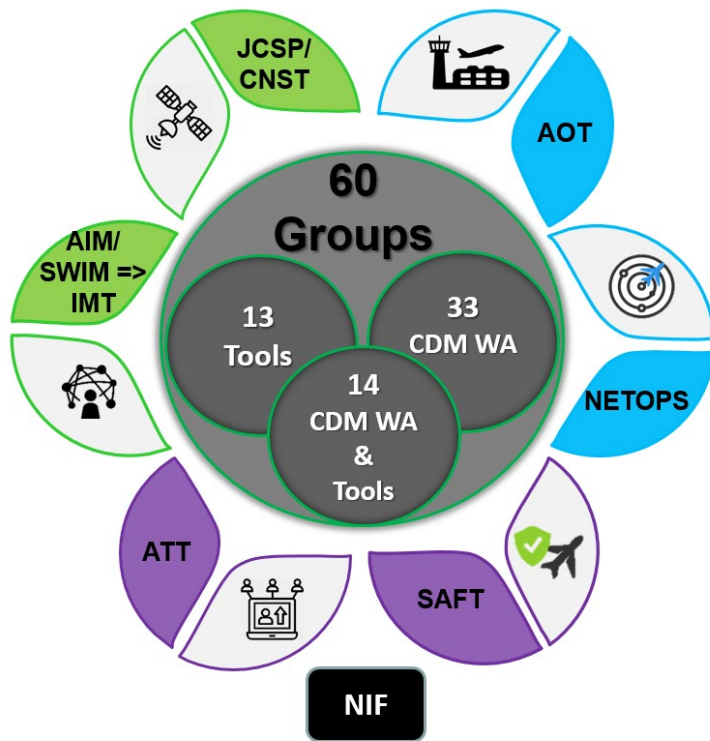
Evolutionary refinement is given more importance than pursuit of initial perfection

It is enabled by **technologies and standards** that make it easier for components to communicate and cooperate over a network, **especially an IP network**



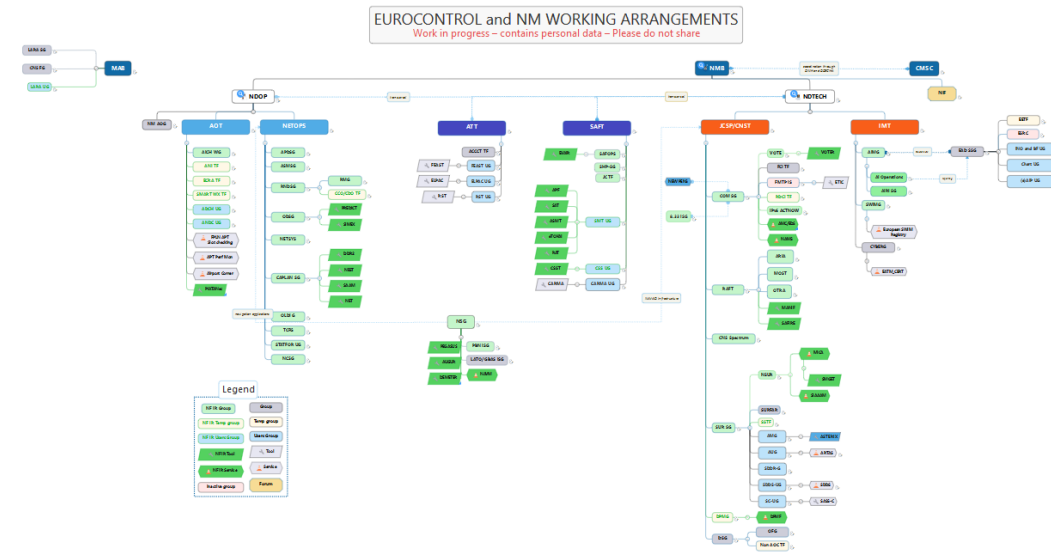
How good are we all in this ?
How many **Service Definitions** are out there ?

In partnership

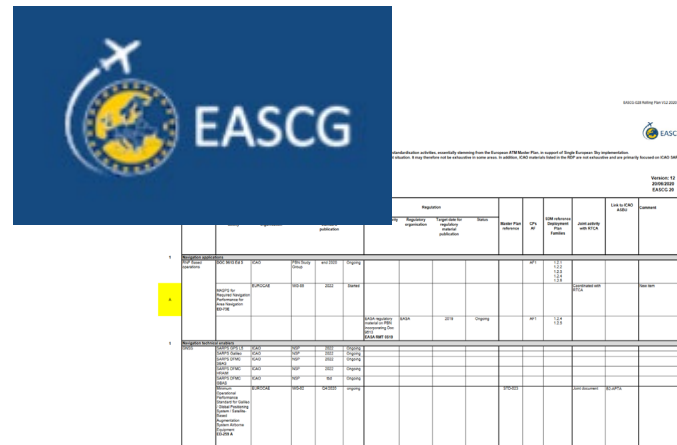


**Implementations of
Ops & Tech Network
Performance
Improvements**

**+
> 40 Tools & Services**



Some concluding remarks

EASCG

Proposition	Priority	Impact	Status	Owner	Start	End	Link to CNS	Release
...
...



Minimum power usage
No toxic materials
Recyclable components

The right standards / service definitions
At the right place
At the right moment

