

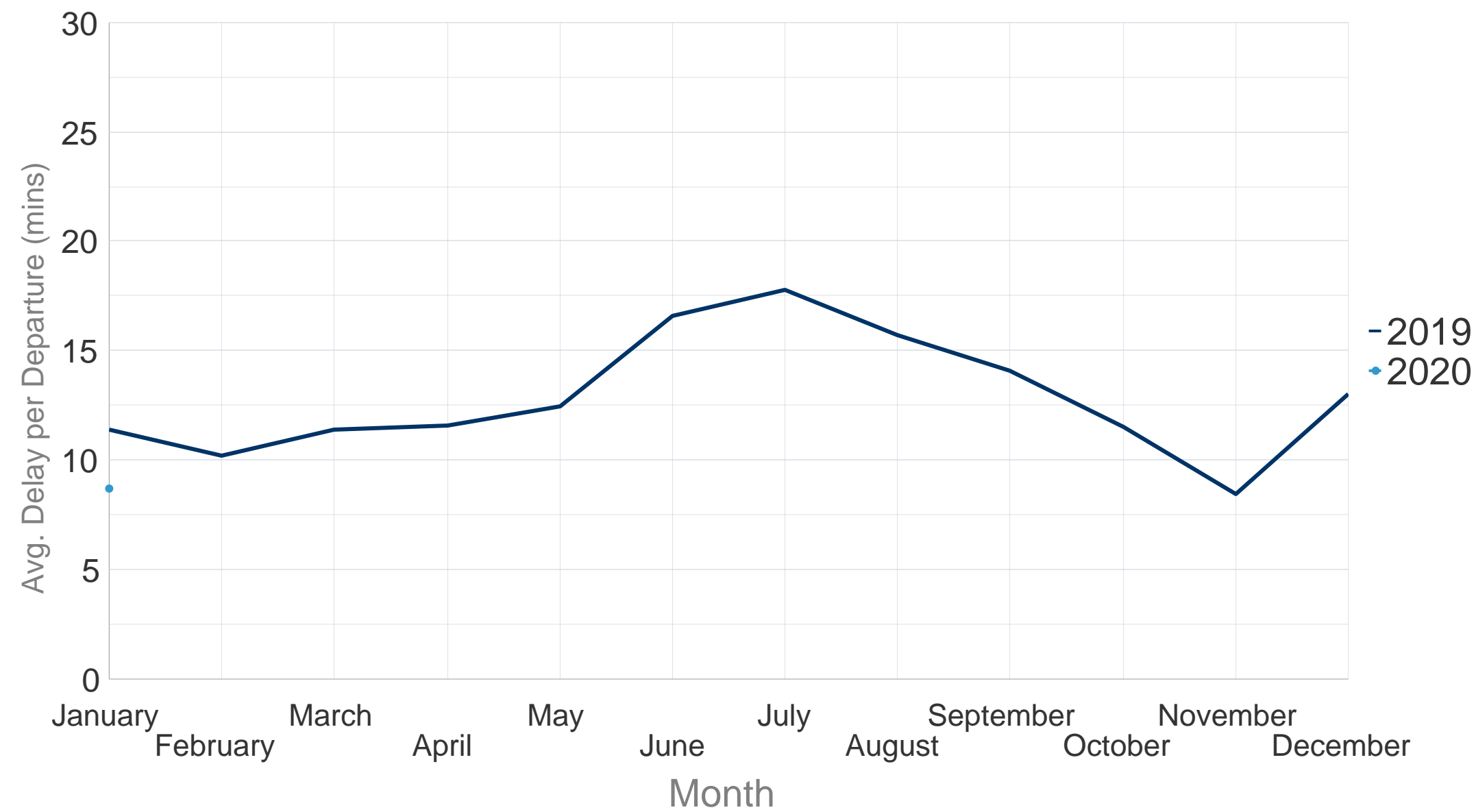
# All-Causes Delay to Air Transport in Europe



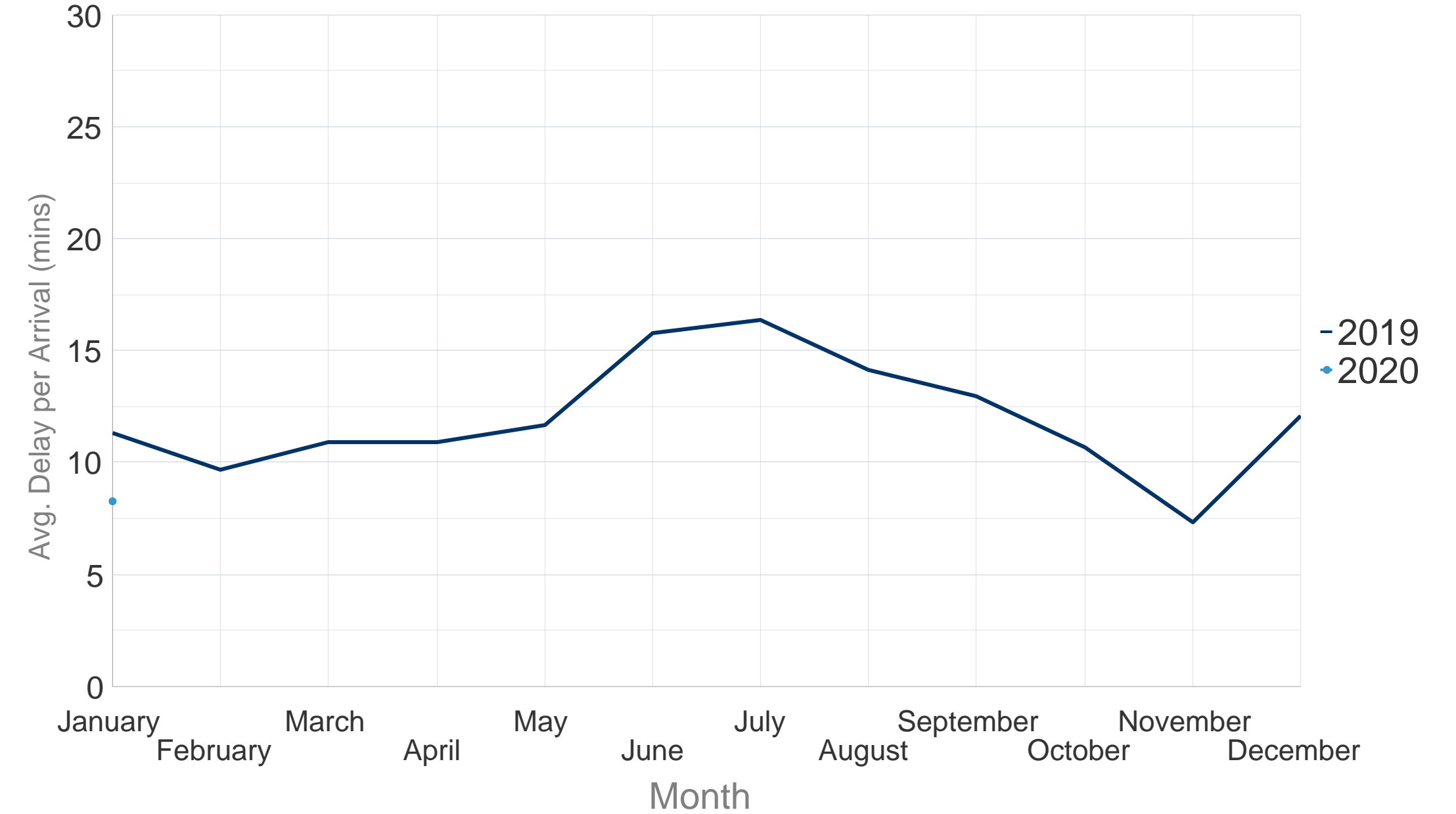
## January 2020

In January 2020, traffic for the month slightly decreased, this down by 0.5% compared to January 2019. Several French ATC industrial actions throughout the month generated en-route ATFM delay and airport ATFM delay in French ACCs such as Paris, Marseille, Brest and Bordeaux. Additional delays were also reported locally in neighbouring states due to traffic on load. Weather conditions (strong winds and low visibility) impacted operations at London/Heathrow, Amsterdam/Schiphol, Lisbon, Geneva, Porto and Vienna airports.

### Average Delay per Flight on Departure (mins) - January 2020



### Average Delay per Flight on Arrival (mins) - January 2020

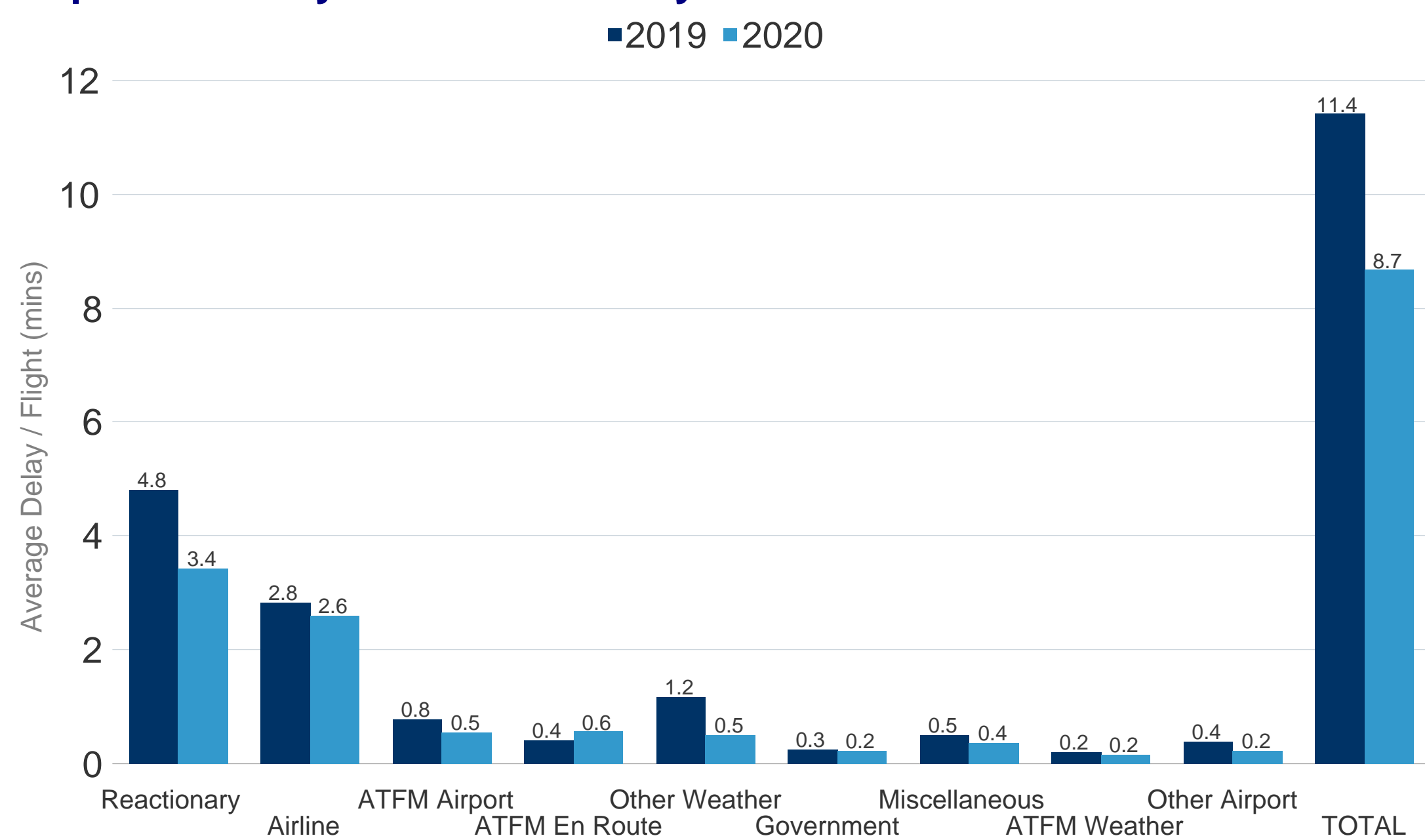


In January 2020 the average delay per flight on departure was 8.7 minutes per flight. This was a decrease of 2.8 minutes per flight when compared to January 2019 where the average delay per flight was 11.4 minutes.

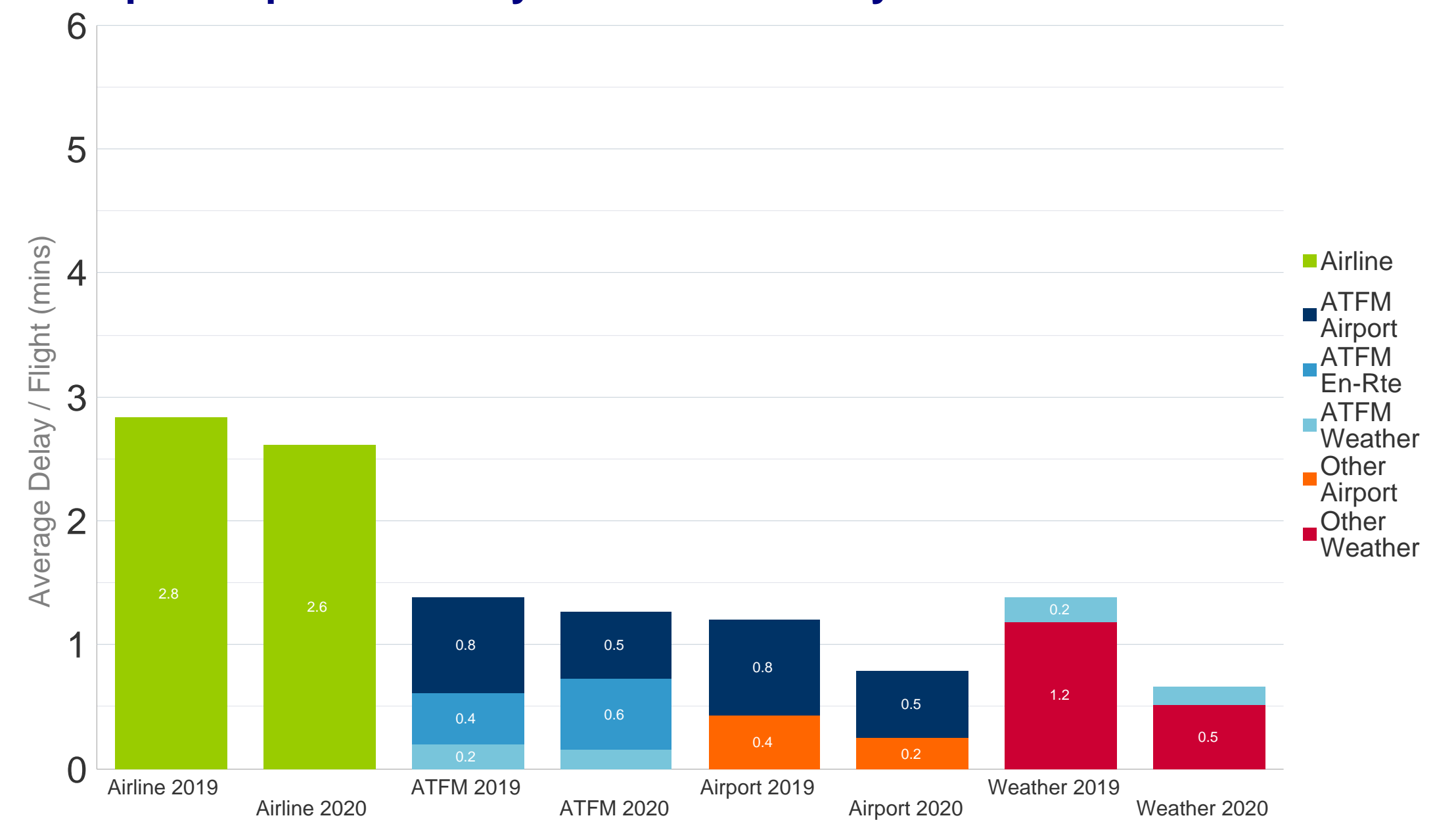
In January 2020 the average delay per flight on arrival was 8.3 minutes per flight. This was a decrease of 3.0 minutes per flight when compared to January 2019 where the average delay per flight was 11.3 minutes.

Further analysis of the delay causes shows that reactionary delay contributed 3.4 minutes to the average delay per flight in January 2020.

### Departure Delay Causes - January 2020



### Grouped Departure Delay Causes - January 2020

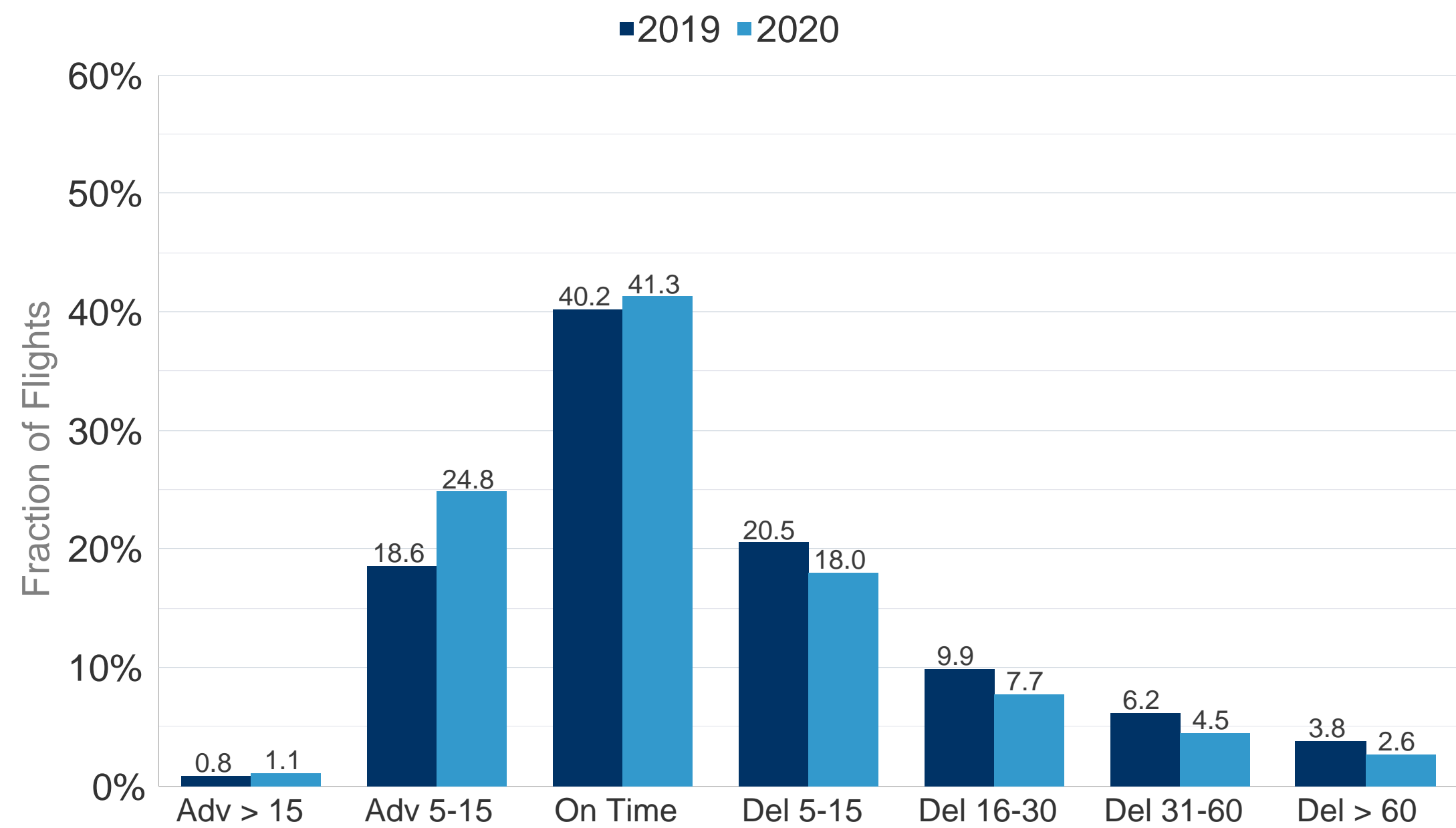


The First Look at Delays is based on partial airline data to be updated once the full dataset is available.  
 Current CODA Coverage of IFR Flights in ECAC January 2020: 54.5%  
 Date of publication: 24/02/2020 Eurocontrol TLP status: White (Public Information)

SUPPORTING EUROPEAN AVIATION

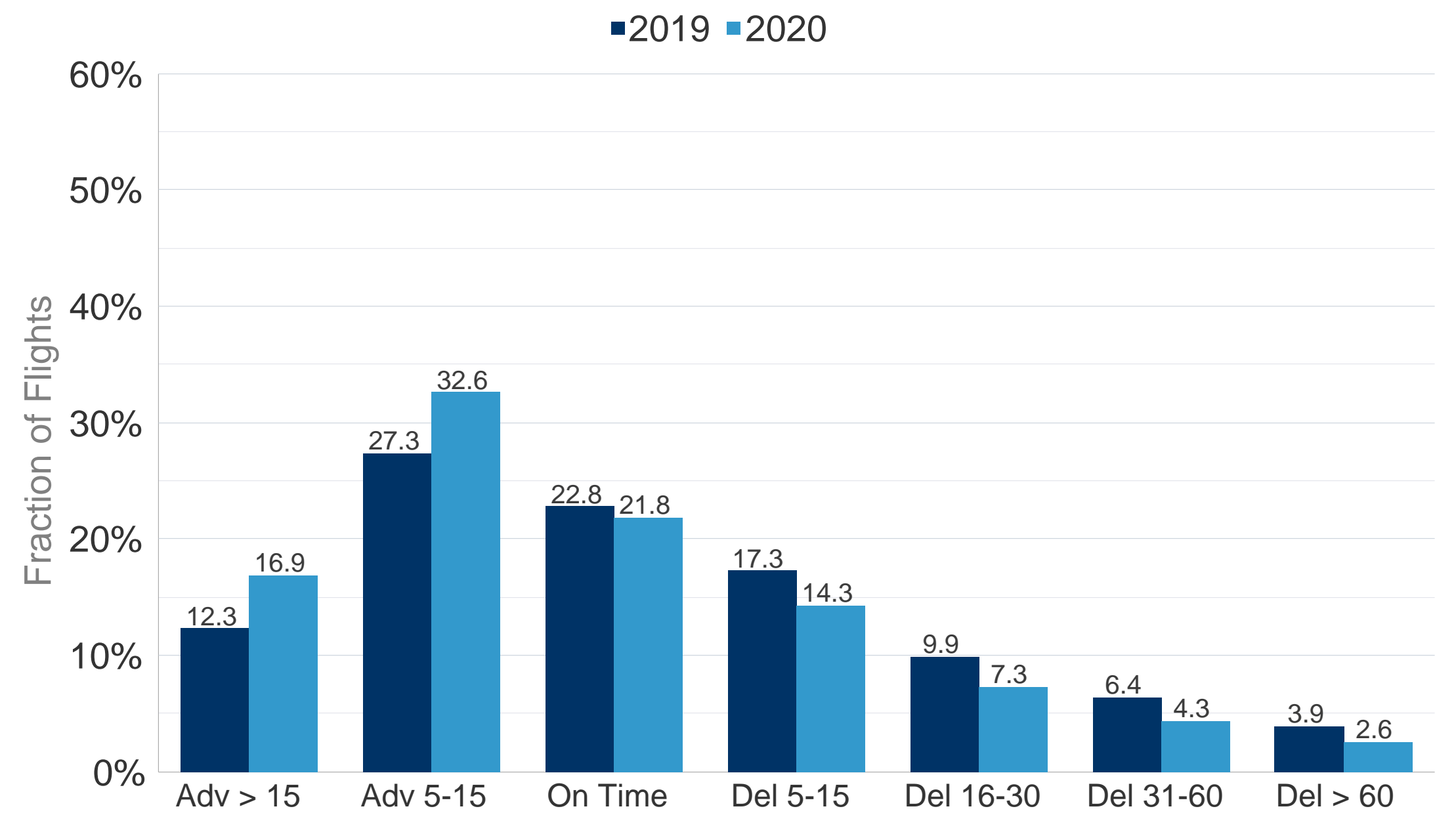


### All Causes Departure Punctuality - January 2020



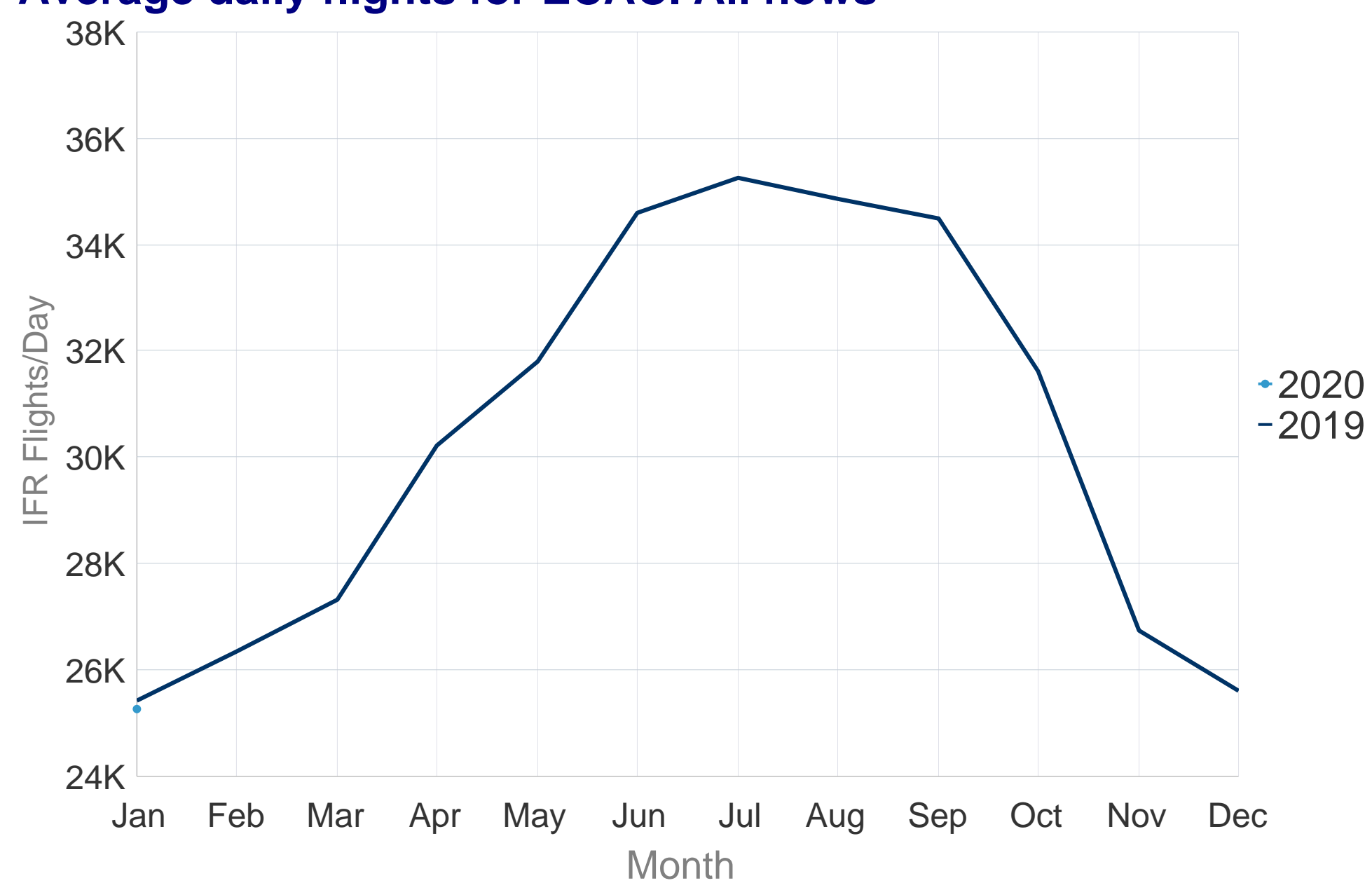
In January 2020, 41.3% of the flights departed within the 5 minutes threshold before or after the scheduled departure time (STD); **an increase** of 1.1 points from 40.2% compared to previous year. Flights delayed >30 minutes from all-causes **decreased** from 10.0% to 7.1%.

### All Causes Arrival Punctuality - January 2020

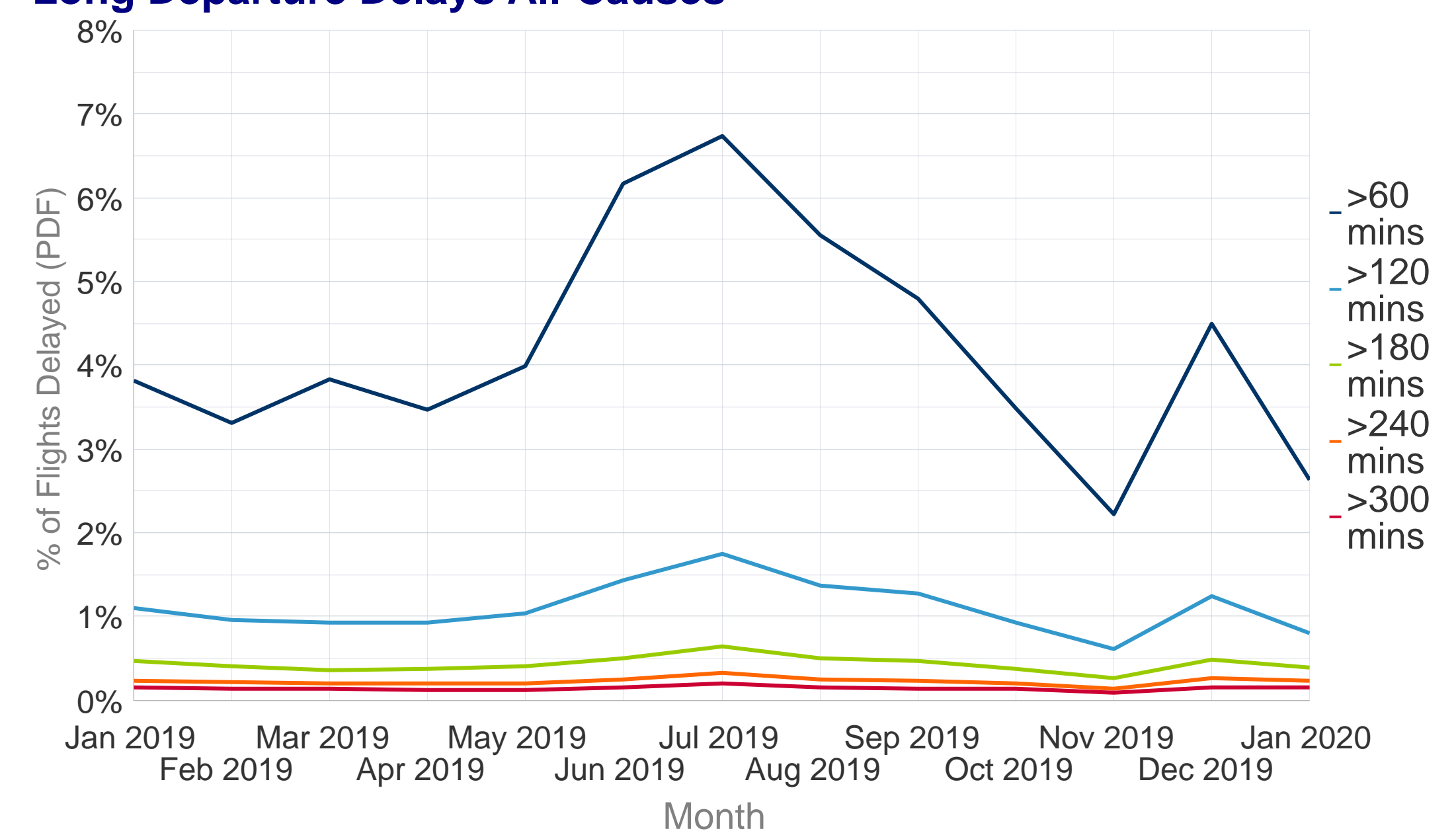


In January 2020, 21.8% of the flights arrived within the 5 minutes threshold before or after the scheduled arrival time (STA); **a decrease** of 0.9 points from 22.8% compared to previous year. Flights delayed >30 minutes from all-causes **decreased** from 10.3% to 6.9%.

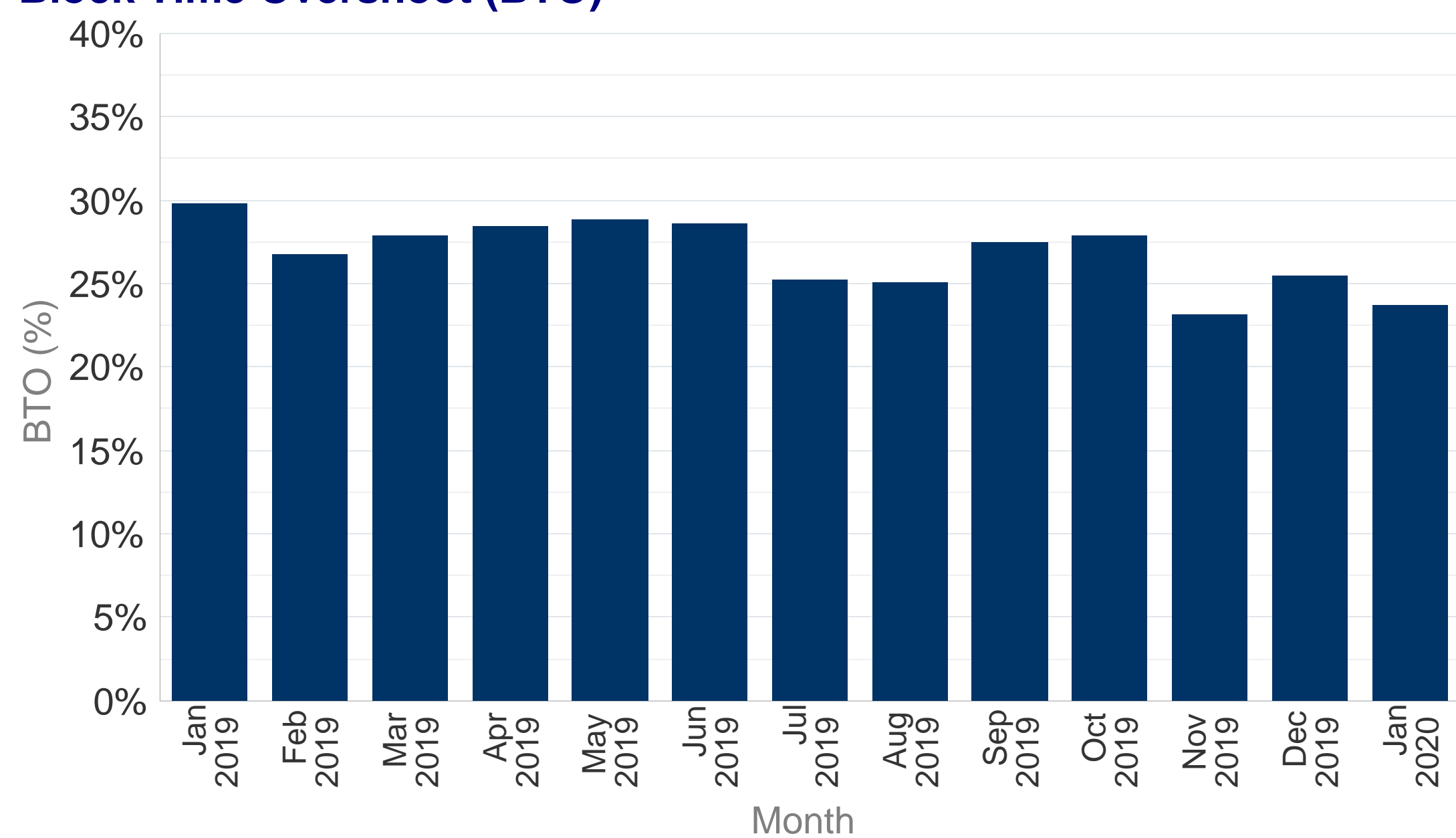
### Average daily flights for ECAC. All flows



### Long Departure Delays All-Causes



### Block Time Overshoot (BTO)



### Delay Difference Indicator - Flight (DDI-F)

