



# Monthly Network Operations Report

Overview December 2019



SUPPORTING EUROPEAN AVIATION



NETWORK  
MANAGER



# 1. SUMMARY

Traffic in December 2019 decreased by 0.3% compared to December 2018 and was below the baseline forecast published in Autumn 2019. Only two states added more than 50 flights daily to the network with Poland and Italy as the top contributors. NM estimates 3,500 flights didn't operate due to French industrial action.

En-route ATFM delays (30,403 min/day) increased by 65.5% and airport ATFM delays (13,062 min/day) decreased by 22.0% compared to December 2018. There were, on average, 651 daily flights with an en-route ATFM delay of at least 15 minutes (+48.6% compared to December 2018).

Highlights include:

**En-route:**

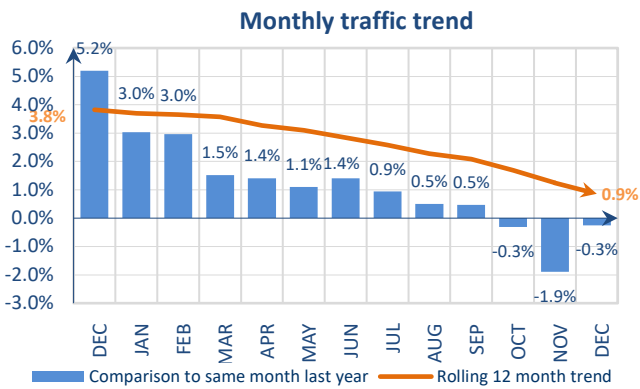
- French ATC industrial action throughout the month generated approximately 470,000 minutes of en-route ATFM delay;
- High delays due to ATC capacity in Karlsruhe UAC;
- Staffing shortage in Karlsruhe, Marseille, Reims and Lisboa ACCs.

**Airport:**

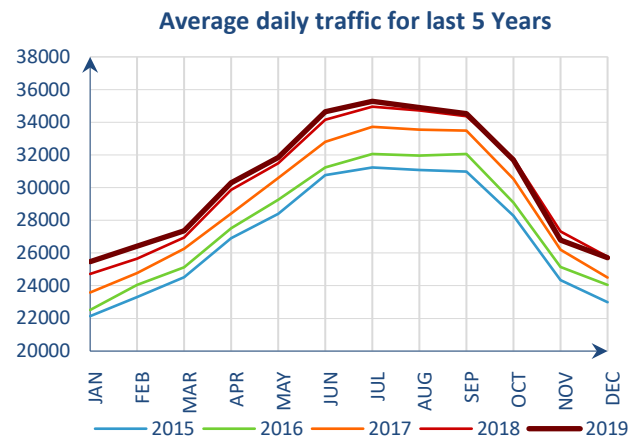
- Low visibility and strong winds impacted operations at Amsterdam/Schiphol, Lisbon, London/Heathrow and Madrid/Barajas airports.

The average en-route ATFM delay per flight in the NM area<sup>i</sup> in December was 1.18 min/ft, which is well above the corresponding monthly guideline<sup>ii</sup> value of 0.29 min/ft. The average en-route ATFM delay per flight in 2019 in the NM area<sup>i</sup> is 1.57 min/ft which is three times the corresponding target of 0.50 min.

## 2. TOTAL TRAFFIC

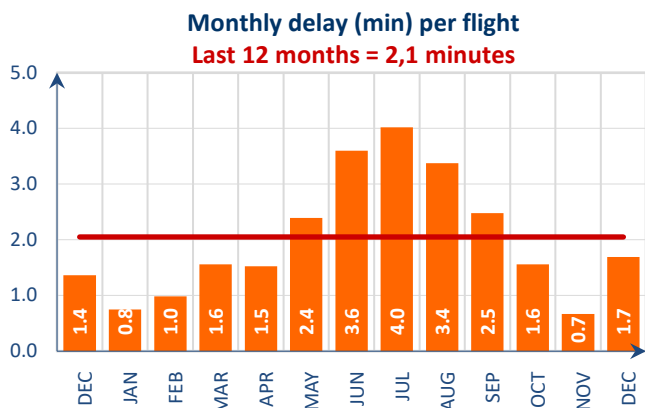


Traffic decreased by 0.3% in December 2019<sup>iii</sup>.

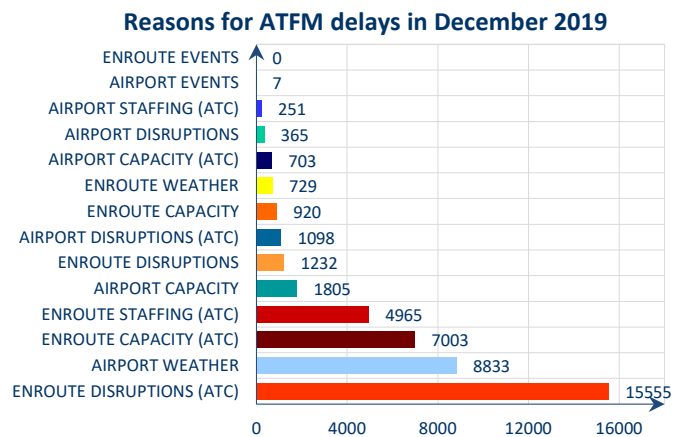


Average daily traffic in December 2019 was 25,710.

## 3. ATFM DELAYS



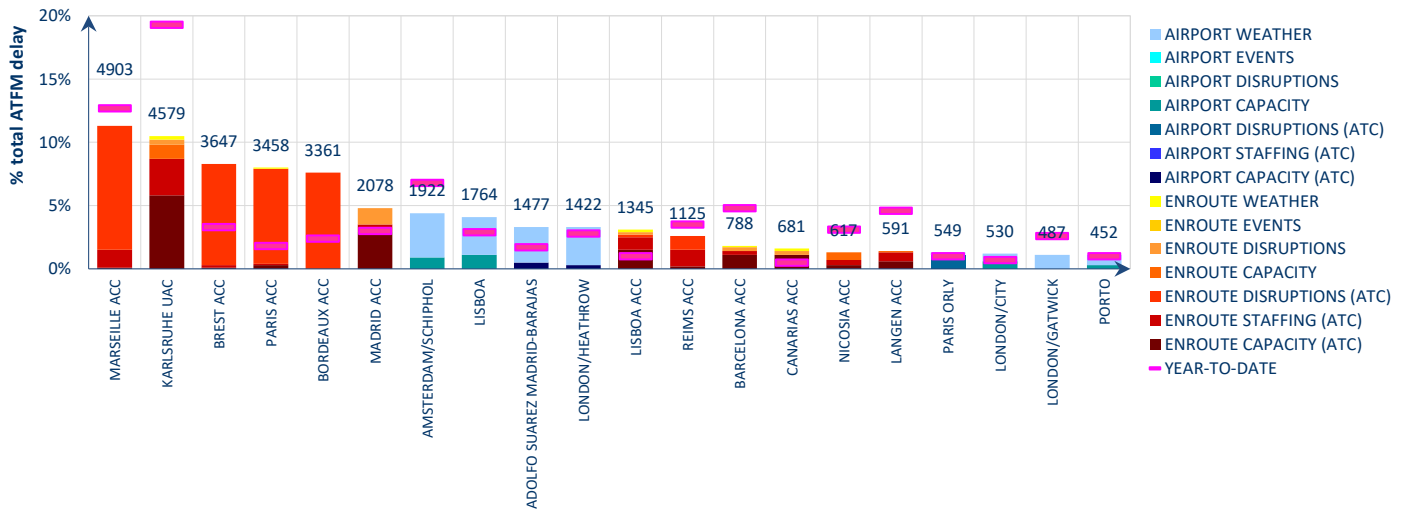
Average ATFM delay per flight increased from 0.7 min/ft in November 2019 to 1.7 min/ft in December 2019.



En-route ATC disruptions (35.8%), airport weather (20.3%) and en-route ATC capacity (16.1%) were the main causes of ATFM delays in December 2019.

## Top 20 delay locations (min) in December 2019

Full year

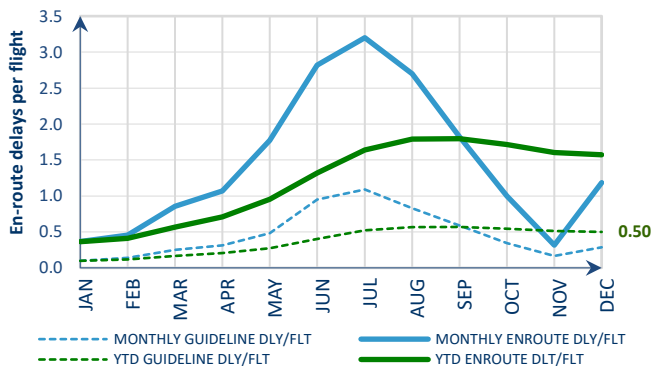


These are the top 20 delay generating locations for the reporting month with respect to total ATFM delays. Figures are the average daily delays in minutes for the individual locations.

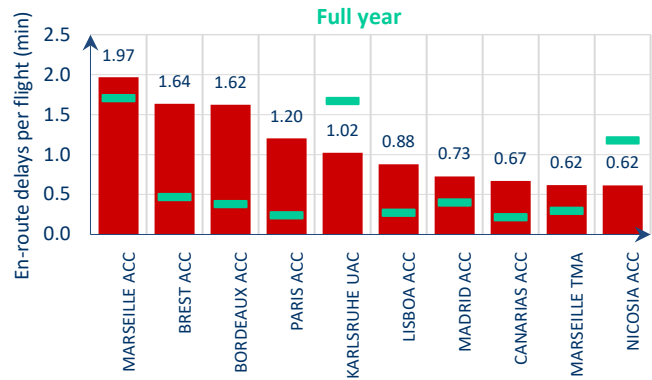
- Several French ATC industrial actions throughout the month generated high delays in French ACCs such as Marseille, Brest, Paris and Bordeaux;
- Low visibility and strong winds impacted operations at Amsterdam/Schiphol, Lisbon, London/Heathrow and Madrid/Barajas airports;
- High delay due to ATC capacity in Karlsruhe UAC;
- Staffing shortage in Karlsruhe, Marseille, Reims and Lisboa ACCs.

## 4. EN-ROUTE ATFM DELAY MONITORING

Monthly en-route delay per flight monitoring



Top 10 en-route delay per flight in December 2019

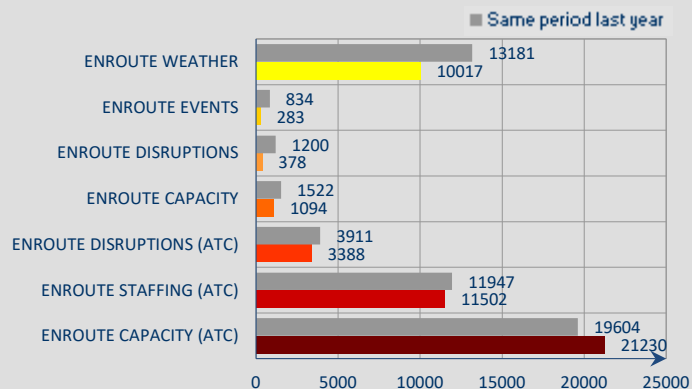


**Reporting month:** The average en-route ATFM delay per flight in the NM area<sup>i</sup> in December was 1.18 min/flt, which is well above the corresponding monthly guideline<sup>ii</sup> value of 0.29 min/flt.

**Year To Date:** The average YTD en-route ATFM delay per flight in 2019 in the NM area<sup>i</sup> is 1.57 min/flt which is three times the corresponding target of 0.50 min/flt.

ATC disruptions delay in Marseille, Brest, Bordeaux and Paris ACCs due to ATC industrial action; ATC capacity delays in Karlsruhe, Lisbon, Madrid and Canarias ACCs; Locally reported delays in Nicosia ACC due to French ATC industrial action.

## average daily en-route delays 2019



En-route ATC capacity is above its last year's level. The main contributors are:  
*En-route weather* (-24.0%) in Vienna, Marseille, Karlsruhe, Budapest and Zagreb ACCs;  
*En-route events* (-66.1%) in Bordeaux and Bucuresti ACCs;  
*En-route disruptions* (-68.5%) in Madrid ACC;  
*En-route capacity* (-28.1%) in Karlsruhe, Nicosia, Bremen, Langen and London ACCs;  
*En-route ATC disruptions* (-13.4%) in Marseille, Brest, Bordeaux, Paris and Brussels ACCs;  
*En-route ATC staffing* (-3.7%) in Marseille, Karlsruhe, Vienne, Brussels and Reims ACCs;  
*En-route ATC capacity* (+8.3%) in Karlsruhe, Budapest, Vienna, Barcelona, Bremen and Langen ACCs.

## NOTICE

### Traffic and Delay Comparisons

All traffic and delay comparisons are between report month and equivalent month of previous year, unless otherwise stated.

### NM Area

All figures presented in this report are for the geographical area that is within Network Manager's responsibility (NM area). For further information on the NM Area go to the Reporting Assumptions and Descriptions document available on the EUROCONTROL website at <https://www.eurocontrol.int/network-performance>

### Regulation Reason Groupings

See Analysis for more information on colour coding. For further information on the NM Area and the regulation reason groupings, go to the Reporting Assumptions and Descriptions document available on the EUROCONTROL website at <https://www.eurocontrol.int/network-performance>

### ATFM Statistics dashboard

More detailed information available via the new **ATFM Statistics dashboard**

Operational Performance Unit,  
 Network Management Directorate (NMD),  
 EUROCONTROL,  
 96 Rue de la Fusée,  
 B - 1130 Brussels

mailto:[nm.ops.perf@eurocontrol.int](mailto:nm.ops.perf@eurocontrol.int)  
<https://www.eurocontrol.int/network-performance>

i See Notice on page 4 for more information on NM Area.

ii NM's calculation that provides the guideline en-route delay (min) requirements to achieve the annual target (0.5 min/flight).

iii See notice on page 4 for more information on traffic and delays comparisons.



© EUROCONTROL - January 2019

This document is published by EUROCONTROL for information purposes. It may be copied in whole or in part, provided that EUROCONTROL is mentioned as the source and it is not used for commercial purposes (i.e. for financial gain). The information in this document may not be modified without prior written permission from EUROCONTROL.

[www.eurocontrol.int](http://www.eurocontrol.int)