

Schiphol Airport 2019

figures, experience, outlook 2020

Frank Dijkgraaf (LVNL)

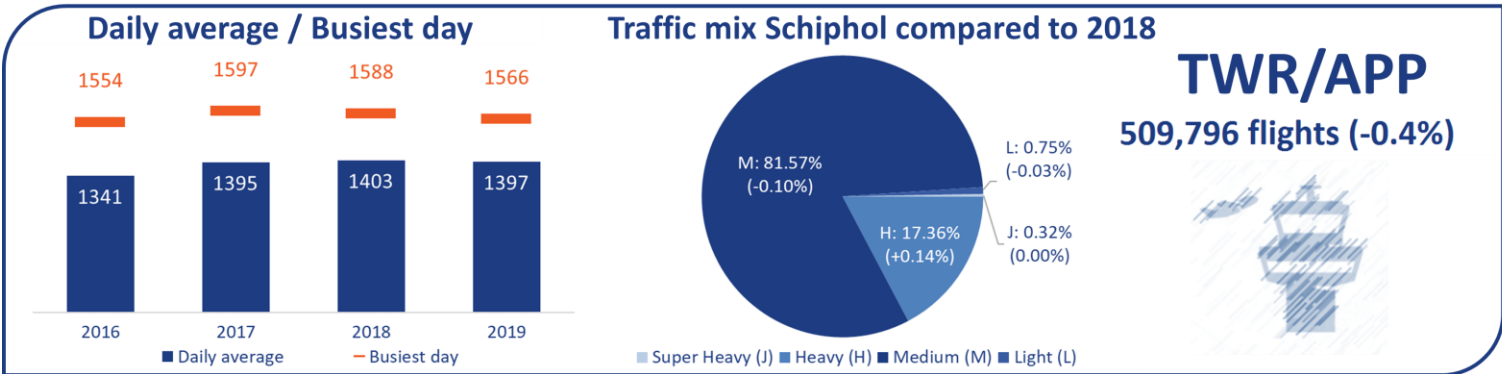
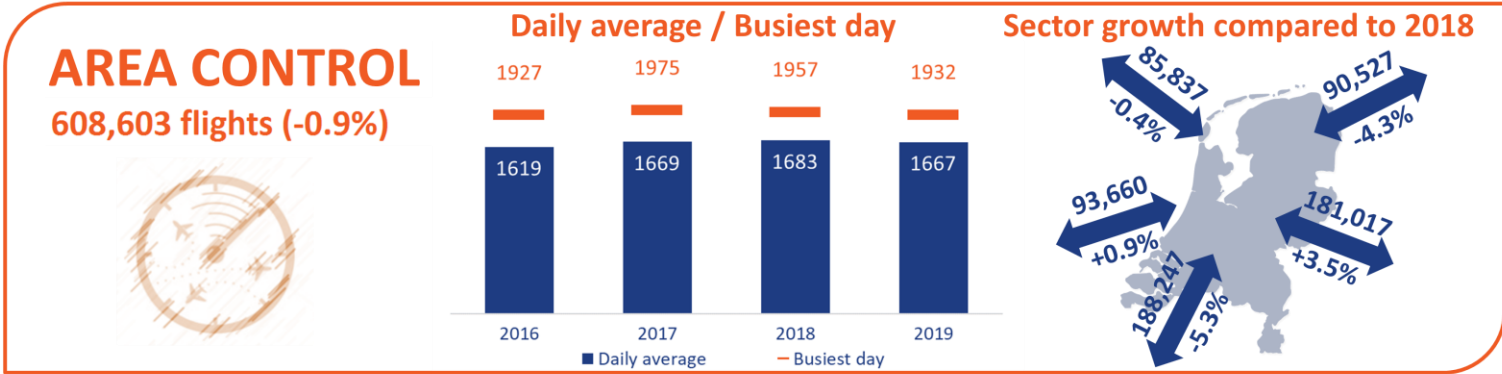


Content

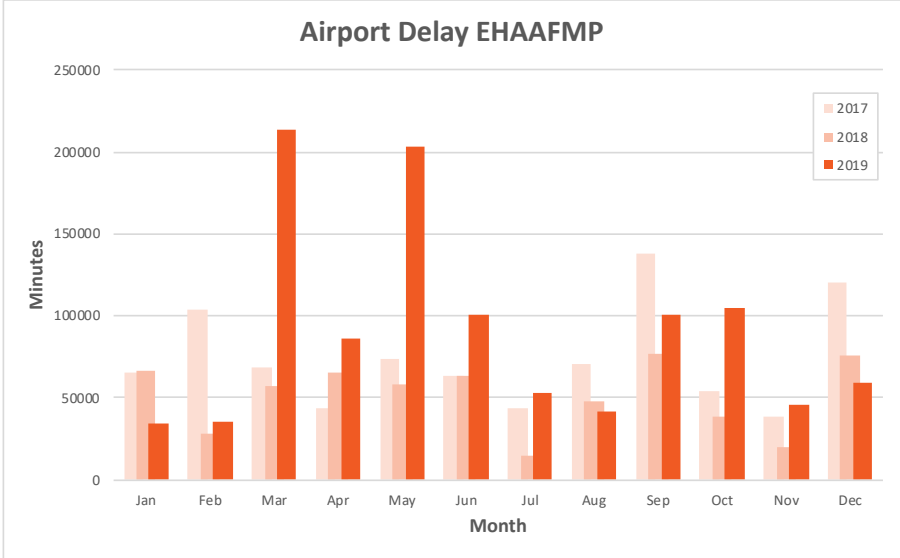
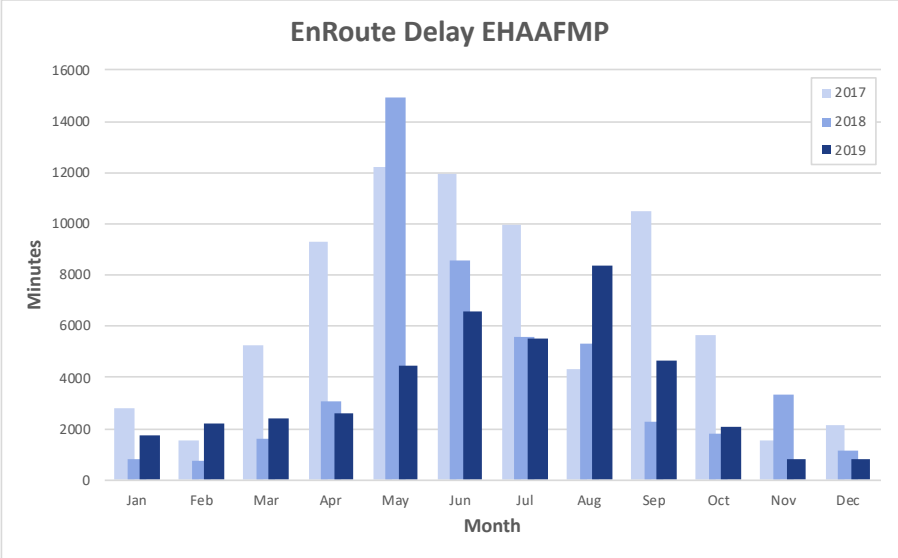
Schiphol airport 2019 and outlook 2020:

- Figures 2019
- Experience 2019
- Outlook 2020

Schiphol airport: figures 2019



Schiphol Airport 2019: ATFM Delay



Schiphol airport: experience

- Slight decrease in traffic due to the 500,000 capacity constraint
- Tower 2.0: Increased number of working positions, new systems, 24/7 operation without operational constraints
- ATM regulations in March and May-June
 - March: adverse weather
 - May: temporary lower capacity and adapted runway to allow for introduction of the Electronic flight strips system
 - May-June: taxiway maintenance
- Environmental measures in place to reduce 4th runway use

Schiphol airport: outlook 2020

- Joint Capacity Management: optimal use of available capacity
- APOC (Airport Operations Centre) including the Airport Operations Plan (AOP)
- CDM –outbound planning improvements
- Decision Support Tool: assisting the Supervisor in deciding on optimal capacity regulation
- Follow up sector study daily traffic demand bunching
- Target Time Over trial
- AMAN improvements and XMAN

Luchtverkeersleiding Nederland