



# Monthly Network Operations Report

Overview October 2019



SUPPORTING EUROPEAN AVIATION



NETWORK  
MANAGER



# 1. SUMMARY

Traffic in October 2019 decreased by 0.3% compared to October 2018 and was just above the low forecast published in October 2019. The traffic variation was partly due to the four airline failure in September along with industrial action (Italian ATC industrial action and Lufthansa Group).

Only two states added more than 50 flights daily to the network with Turkey and Ukraine as the top contributors.

En-route ATFM delays (31,582 min/day) decreased by 18.6% and airport ATFM delays (17,836 min/day) decreased by 5.4% compared to October 2018.

There were, on average, 688 daily flights with an en-route ATFM delay of at least 15 minutes (-25.8% compared to October 2018).

Highlights include:

*En-route:*

- High delays due to capacity/staffing in Karlsruhe and Marseille ACCs.

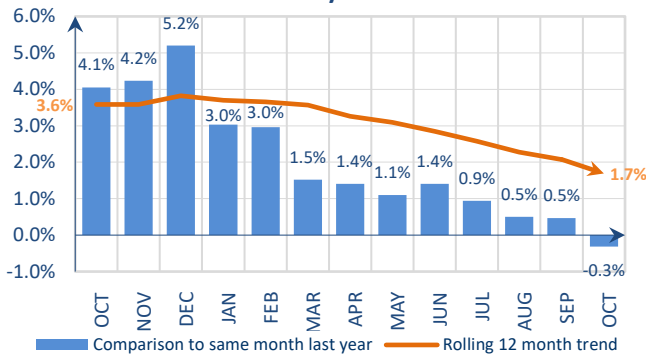
*Airport:*

- Low visibility and strong winds generated high delays at London/Heathrow and Amsterdam/Schiphol airports.

The average en-route ATFM delay per flight in the NM area<sup>i</sup> in October was 1.00 min/flt, which is well above the corresponding monthly guideline<sup>ii</sup> value of 0.35 min/flt. The average YTD en-route ATFM delay per flight in 2019 in the NM area<sup>i</sup> is 1.71 min/flt which is three times the corresponding guideline of 0.55 min.

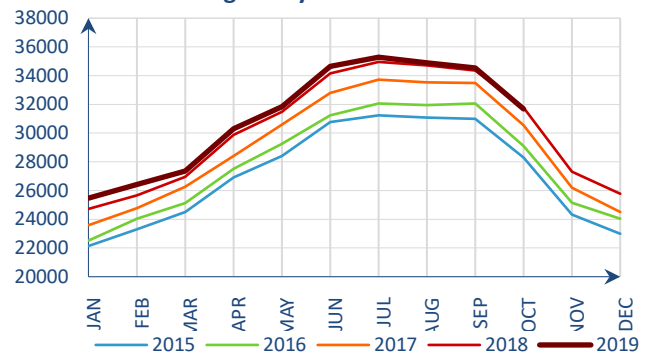
# 2. TOTAL TRAFFIC

Monthly traffic trend



Traffic decreased by 0.3% in October 2019<sup>iii</sup>.

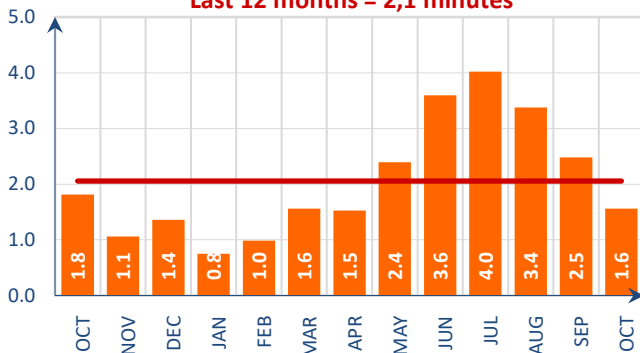
Average daily traffic for last 5 Years



Average daily traffic in October 2019 was 31,678.

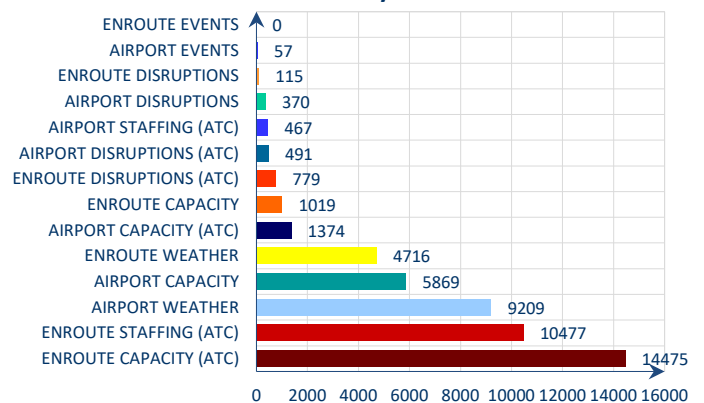
# 3. ATFM DELAYS

Monthly delay (min) per flight  
Last 12 months = 2,1 minutes



Average ATFM delay per flight decreased from 2.5 min/flt in September 2019 to 1.6 min/flt in October 2019.

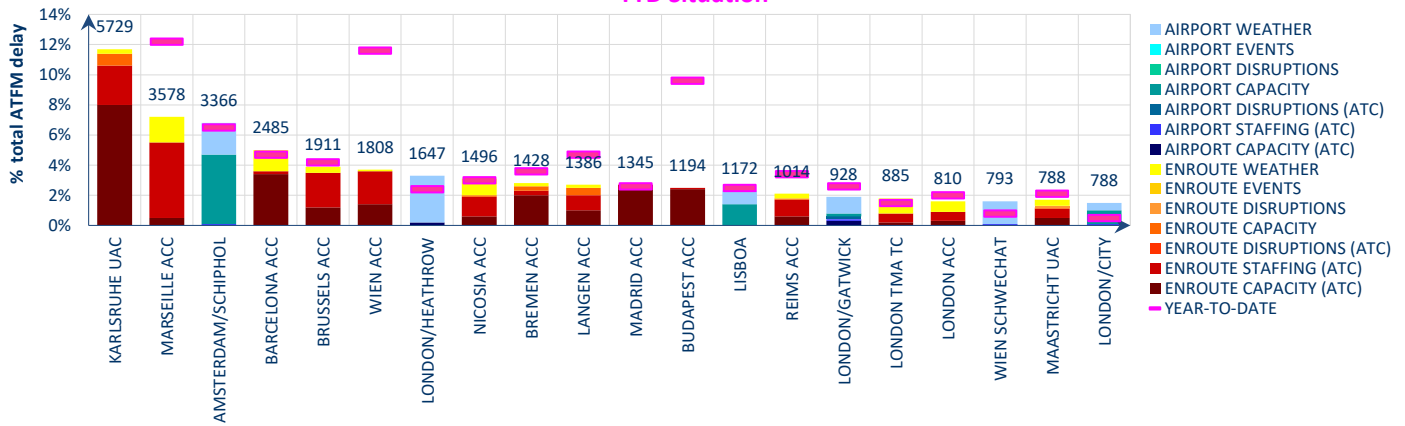
Reasons for ATFM delays in October 2019



En-route ATC capacity (29.3%), en-route ATC staffing (21.2%) and airport weather (18.9%) were the main causes of ATFM delays in October 2019.

### Top 20 delay locations (min) in October 2019

YTD Situation

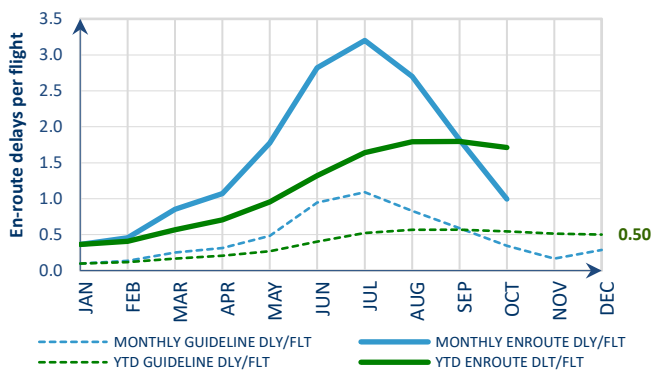


These are the top 20 delay generating locations for the reporting month with respect to total ATFM delays. Figures are the average daily delays in minutes for the individual locations.

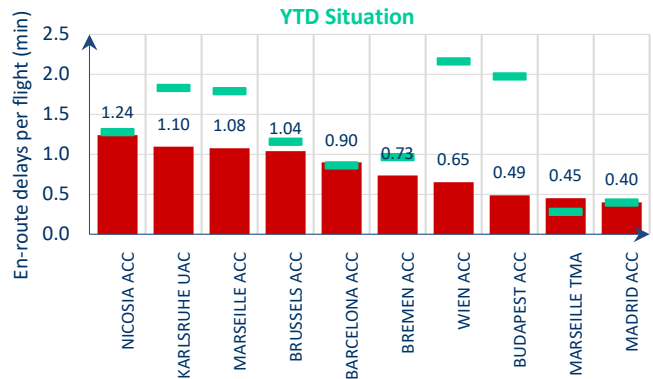
- ATC capacity issues in Karlsruhe, Barcelona, Bremen, Madrid and Budapest ACCs;
- High delay due to staffing in Marseille ACC;
- Low visibility and strong winds impacted operations strongly at London/Heathrow and Amsterdam/Schiphol airports;
- Airport capacity issues in conjunction with work on runway and taxiway at Amsterdam/Schiphol airports generated delays.

## 4. EN-ROUTE ATFM DELAY MONITORING

Monthly en-route delay per flight monitoring



Top 10 en-route delay per flight in October 2019

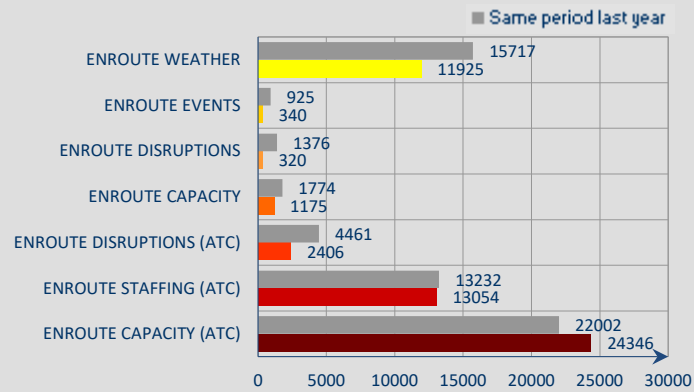


**Reporting month:** The average en-route ATFM delay per flight in the NM area<sup>i</sup> in October was 1.00 min/flt, which is well above the corresponding monthly guideline<sup>ii</sup> value of 0.35 min/flt.

**Year To Date:** The average YTD en-route ATFM delay per flight in 2019 in the NM area<sup>i</sup> is 1.71 min/flt which is three times the corresponding guideline of 0.55 min/flt.

ATC staffing issues in Nicosia, Karlsruhe, Marseille, Brussels and Vienna; ATC capacity issues in Nicosia, Karlsruhe, Brussels, Barcelona, Bremen, Vienna, Budapest and Madrid; Weather delays in Nicosia, Marseille, Brussels and Barcelona; ATC Disruptions delays in Marseille TMA due to communication failure.

## Year-to-date average daily en-route delays



En-route ATC staffing is above its last year's level. The main contributors are:

*En-route weather* (-24.1%) in Vienna, Marseille, Karlsruhe, Budapest and Zagreb ACCs;

*En-route events* (-63.2%) in Bordeaux, Maastricht and Bucuresti ACCs;

*En-route disruptions* (-76.7%) in Madrid ACC;

*En-route capacity* (-33.8%) in Karlsruhe, Nicosia, Maastricht, Bremen and Langen ACCs;

*En-route ATC disruptions* (-46.1%) in Marseille, Brest, Bordeaux, Brussels and Langen ACCs;

*En-route ATC staffing* (-1.4%) in Marseille, Karlsruhe, Vienne, Brussels and Reims ACCs;

*En-route ATC capacity* (+10.7%) in Karlsruhe, Budapest, Vienna, Barcelona, Zagreb, Langen and Bremen ACCs.

## NOTICE

### Traffic and Delay Comparisons

All traffic and delay comparisons are between report month and equivalent month of previous year, unless otherwise stated.

### NM Area

All figures presented in this report are for the geographical area that is within Network Manager's responsibility (NM area). For further information on the NM Area go to the Reporting Assumptions and Descriptions document available on the EUROCONTROL website at <https://www.eurocontrol.int/network-performance>

### Regulation Reason Groupings

See Analysis for more information on colour coding. For further information on the NM Area and the regulation reason groupings, go to the Reporting Assumptions and Descriptions document available on the EUROCONTROL website at <https://www.eurocontrol.int/network-performance>

### ATFM Statistics dashboard

More detailed information available via the new **ATFM Statistics dashboard**

Operational Analysis & Reporting,  
Operational Performance Unit,  
Network Manager Directorate (NMD),  
EUROCONTROL,  
96 Rue de la Fusée,  
B - 1130 Brussels

mailto:[nm.ops.perf@eurocontrol.int](mailto:nm.ops.perf@eurocontrol.int)  
<https://www.eurocontrol.int/network-performance>

i See Notice on page 4 for more information on NM Area.

ii NM's calculation that provides the guideline en-route delay (min) requirements to achieve the annual target (0.5 min/flight).

iii See notice on page 4 for more information on traffic and delays comparisons.



© EUROCONTROL - November 2019

This document is published by EUROCONTROL for information purposes. It may be copied in whole or in part, provided that EUROCONTROL is mentioned as the source and it is not used for commercial purposes (i.e. for financial gain). The information in this document may not be modified without prior written permission from EUROCONTROL.

[www.eurocontrol.int](http://www.eurocontrol.int)