



Monthly Network Operations Report

Overview June 2019



SUPPORTING EUROPEAN AVIATION



1. SUMMARY

Traffic in June 2019 increased by 1.4% compared to June 2018 and was below the baseline forecast published in February 2019. Last week of June was the busiest ever week for the network, with a record of 37,228 flights on Friday 28 June. Seven states added more than 50 flights daily to the network with France, Italy and Spain as the top contributors.

En-route ATFM delays (97,651 min/daily) decreased by 12.0% and airport ATFM delays (26,982 min/daily) increased by 12.8% compared to June 2018 which had high delays due to weather.

There were, on average, 2,389 daily flights with an en-route ATFM delay of at least 15 minutes (-11.8% compared to June 2018).

Highlights include:

En-route:

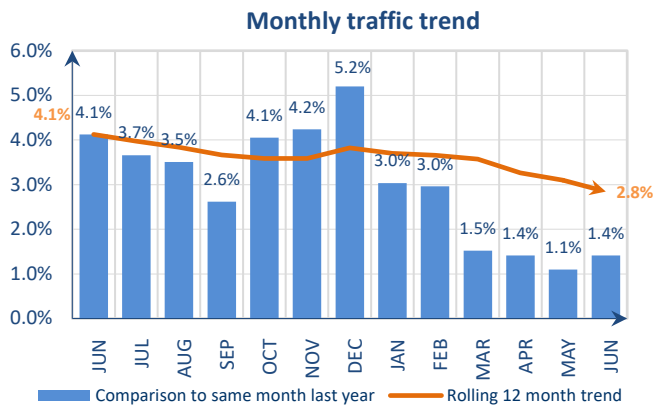
- Convective activity impacted operations strongly in Vienna, and to a lesser extent in Karlsruhe, Budapest and Marseille ACCs;
- High en-route capacity delays in Karlsruhe, Vienna and Budapest ACCs;
- High ATC staffing issues in Marseille ACC;

Airport:

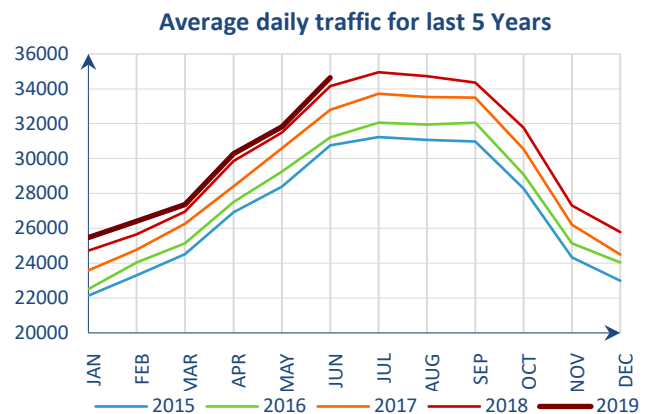
- Thunderstorms impacted strongly operations at Frankfurt/Main and Amsterdam/Schiphol airport;
- Aerodrome capacity issues at Amsterdam/Schiphol airport generated high delays;
- High delays at Athens airport despite an overall increase in ATC Capacity in both Airport and TMA to meet the demand.

The average en-route ATFM delay per flight in the NM areaⁱ in June was 2.82 min/ft, which is well above the corresponding monthly guidelineⁱⁱ value of 0.92 min/ft. The average YTD en-route ATFM delay per flight in 2019 in the NM areaⁱ is 1.32 min/ft which is three times the corresponding guideline of 0.40 min.

2. TOTAL TRAFFIC

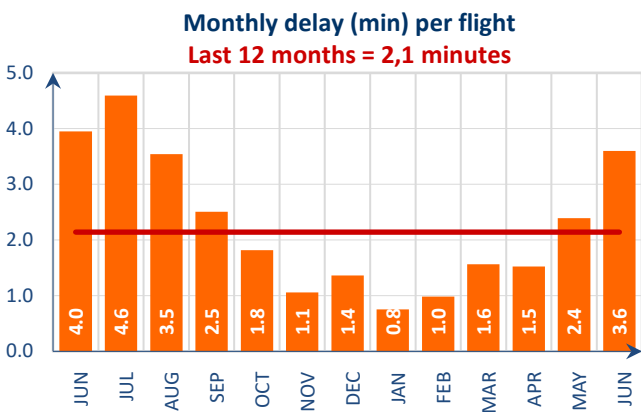


Traffic increased by 1.4% in June 2019ⁱⁱⁱ.

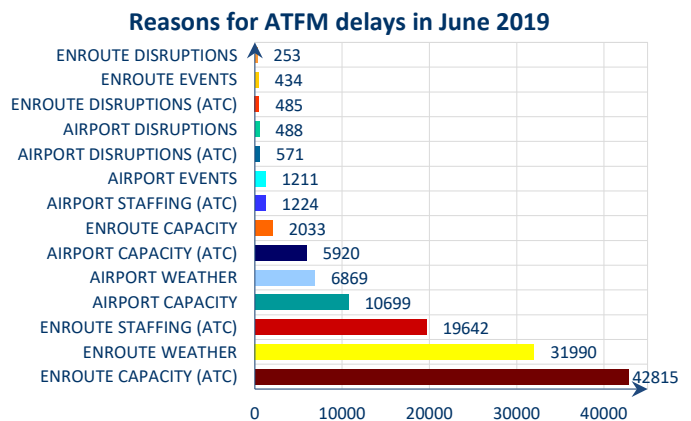


Average daily traffic in June 2019 was 34,639, the highest ever recorded for June.

3. ATFM DELAYS

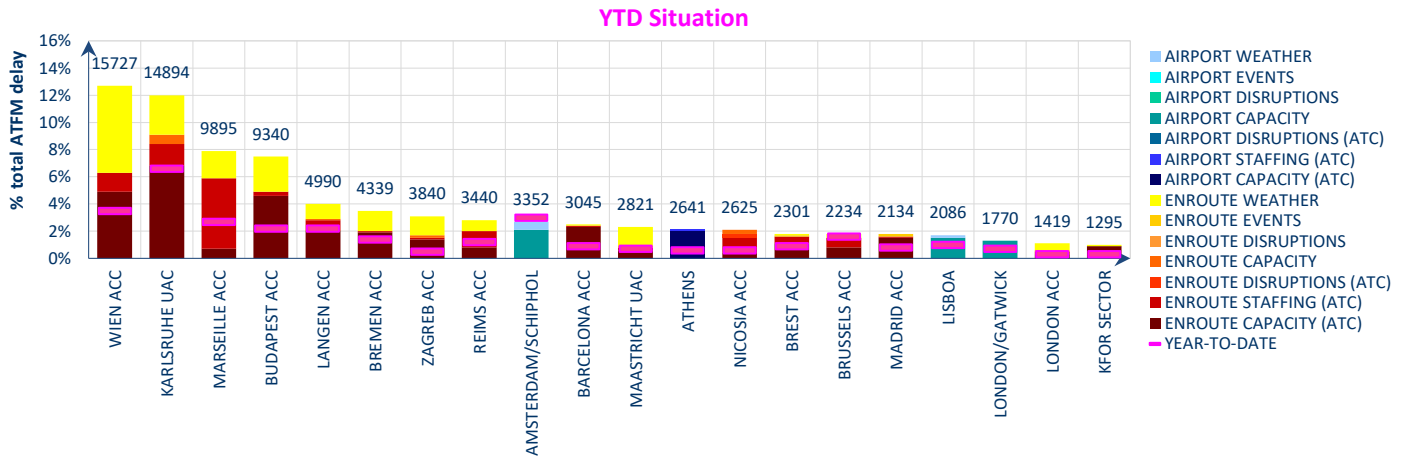


Average ATFM delay per flight increased from 2.4 min/ft in May 2019 to 3.6 min/ft in June 2019.



En-route ATC capacity (34.4%), en-route weather (25.7%) and en-route ATC staffing (15.8%) were the main causes of ATFM delays in June 2019.

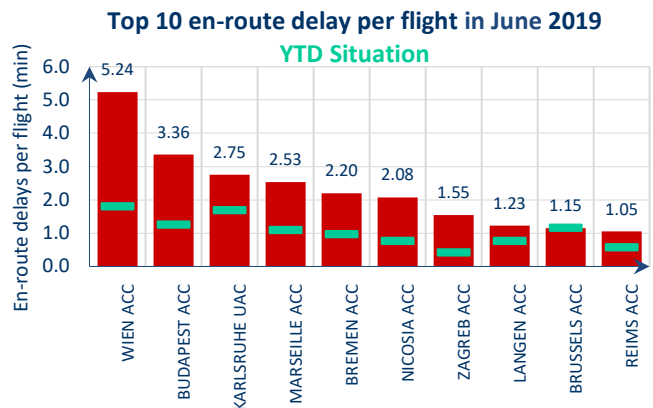
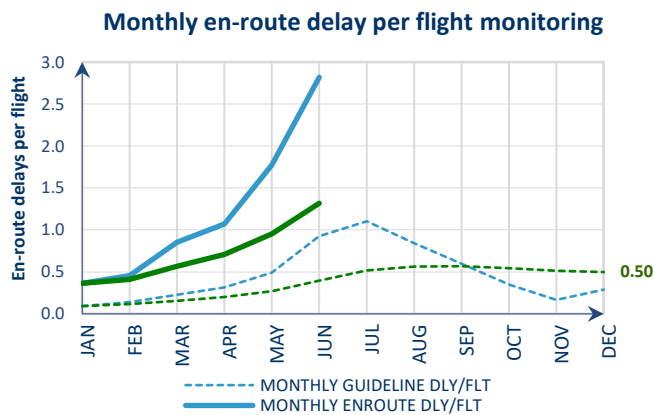
Top 20 delay locations (min) in June 2019



These are the top 20 delay generating locations for the reporting month with respect to total ATFM delays. Figures are the average daily delays in minutes for the individual locations.

- Convective activity impacted operations strongly in Vienna, and to a lesser extent in Karlsruhe, Budapest and Marseille ACCs;
- ATC capacity issues due to high demand in Karlsruhe, Vienna, Budapest, Barcelona and Langen ACCs;
- High staffing delays in Marseille and especially during weekends;
- Capacity issues in conjunction with work in progress at Amsterdam/Schiphol airport;
- ATC capacity delays at Athens airport due to high demand relative to their capacity.

4. EN-ROUTE ATFM DELAY MONITORING

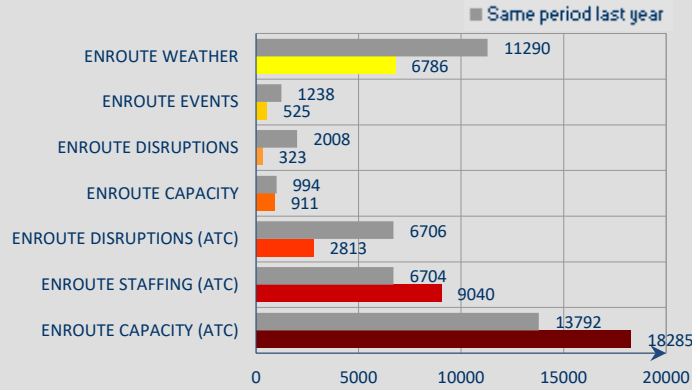


Reporting month: The average en-route ATFM delay per flight in the NM areaⁱ in June was 2.82 min/flt, which is well above the corresponding monthly guidelineⁱⁱ value of 0.92 min/flt.

Year To Date: The average YTD en-route ATFM delay per flight in 2019 in the NM areaⁱ is 1.32 min/flt which is three times the corresponding guideline of 0.40 min/flt.

Weather delays in Vienna, Budapest, Karlsruhe, Marseille, Bremen and Zagreb ACCs; ATC capacity issues in Vienna, Budapest, Karlsruhe, Bremen, Zagreb, Brussels and Reims ACCs; ATC staffing delay in Vienna, Karlsruhe, Marseille, Nicosia, Brussels and Reims ACCs; Infrastructural damage in Nicosia ACC.

Year-to-date average daily en-route delays



En-route ATC staffing and ATC capacity delays are above last year's level. The main contributors are:
En-route weather (-39.9%) in Vienna, Karlsruhe, Budapest, Marseille and Bremen ACCs;
En-route events (-57.6%) in Bucuresti, Bordeaux, Maastricht, Brest and Madrid ACCs;
En-route disruptions (-83.9%) in Madrid ACC;
En-route capacity (-8.4%) in Karlsruhe, Nicosia, Maastricht, Bremen and Langen ACCs;
En-route ATC disruptions (-58.1%) in Marseille, Brest, Bordeaux, Brussels and Langen ACCs;
En-route ATC staffing (+34.8%) in Marseille, Karlsruhe, Brussels, Langen and Reims ACCs;
En-route ATC capacity (+32.6%) in Karlsruhe, Budapest, Vienna, Langen and Bremen ACCs.

NOTICE

Traffic and Delay Comparisons

All traffic and delay comparisons are between report month and equivalent month of previous year, unless otherwise stated.

NM Area

All figures presented in this report are for the geographical area that is within Network Manager's responsibility (NM area). For further information on the NM Area go to the Reporting Assumptions and Descriptions document available on the EUROCONTROL website at <http://www.eurocontrol.int/articles/network-operations-monitoring-and-reporting>.

Regulation Reason Groupings

See Analysis for more information on colour coding. For further information on the NM Area and the regulation reason groupings, go to the Reporting Assumptions and Descriptions document available on the EUROCONTROL website at <http://www.eurocontrol.int/articles/network-operations-monitoring-and-reporting>.

ATFM Statistics dashboard

More detailed information available via the new **ATFM Statistics dashboard**

Operational Analysis & Reporting,
 Performance, Forecasts and Relations (PFR) Unit,
 Network Manager Directorate (NMD),
 EUROCONTROL,
 96 Rue de la Fusée,
 B - 1130 Brussels

mailto:nm.ops.perf@eurocontrol.int
<http://www.eurocontrol.int/articles/network-operations-monitoring-and-reporting>

i See Notice on page 4 for more information on NM Area.

ii NM's calculation that provides the guideline en-route delay (min) requirements to achieve the annual target (0.5 min/flight).

iii See notice on page 4 for more information on traffic and delays comparisons.



© EUROCONTROL - July 2019

This document is published by EUROCONTROL for information purposes. It may be copied in whole or in part, provided that EUROCONTROL is mentioned as the source and it is not used for commercial purposes (i.e. for financial gain). The information in this document may not be modified without prior written permission from EUROCONTROL.

www.eurocontrol.int