

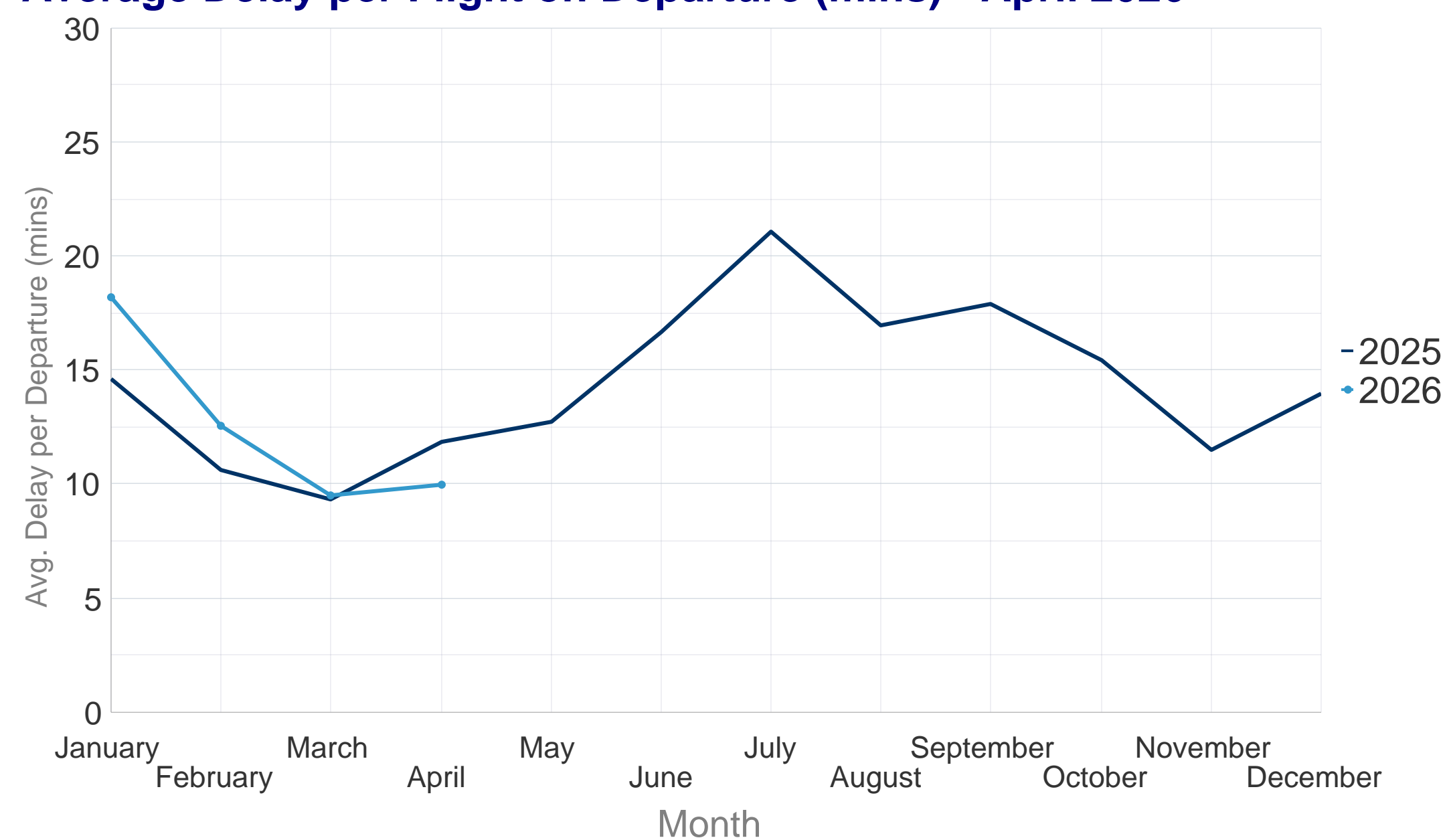
# All-Causes Delays for Air Transport in Europe



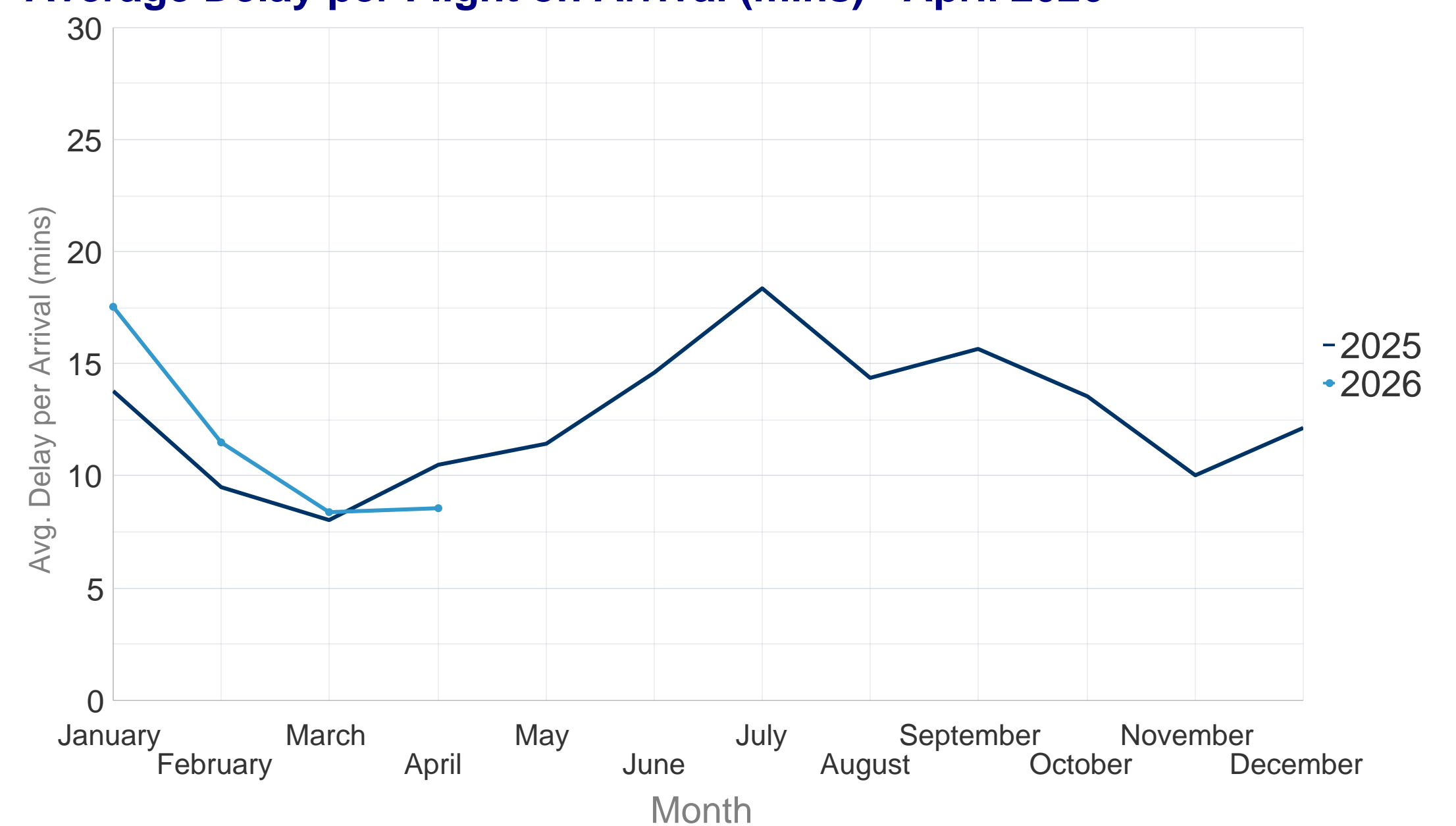
April 2026

In April 2026, flights across the ECAC area decreased by 1.1% compared to April 2025. Ryanair remained the largest carrier by number of flights, followed by easyJet and Turkish Airlines. Istanbul Airport continued to be the busiest airport, ahead of Amsterdam Airport Schiphol and Paris Charles de Gaulle Airport. Overall punctuality improved compared to April 2025, with most major airports recording OTP above 80%. Performance at Athens improved slightly but flights to the airport continued to face daily ATC capacity regulations, as winter season arrival capacity remained despite increased summer demand. Lisbon achieved better arrival punctuality thanks to fewer weather disruptions, although thunderstorms and strong winds still caused delays on certain days. Paris CDG was affected by ongoing taxiway works. Departures from Lisbon were also impacted by reactionary and en-route ATFM delays. At Zurich, reactionary delays were linked to a TTMS trial affecting arrivals, along with weather regulations caused by north-easterly winds.

Average Delay per Flight on Departure (mins) - April 2026



Average Delay per Flight on Arrival (mins) - April 2026

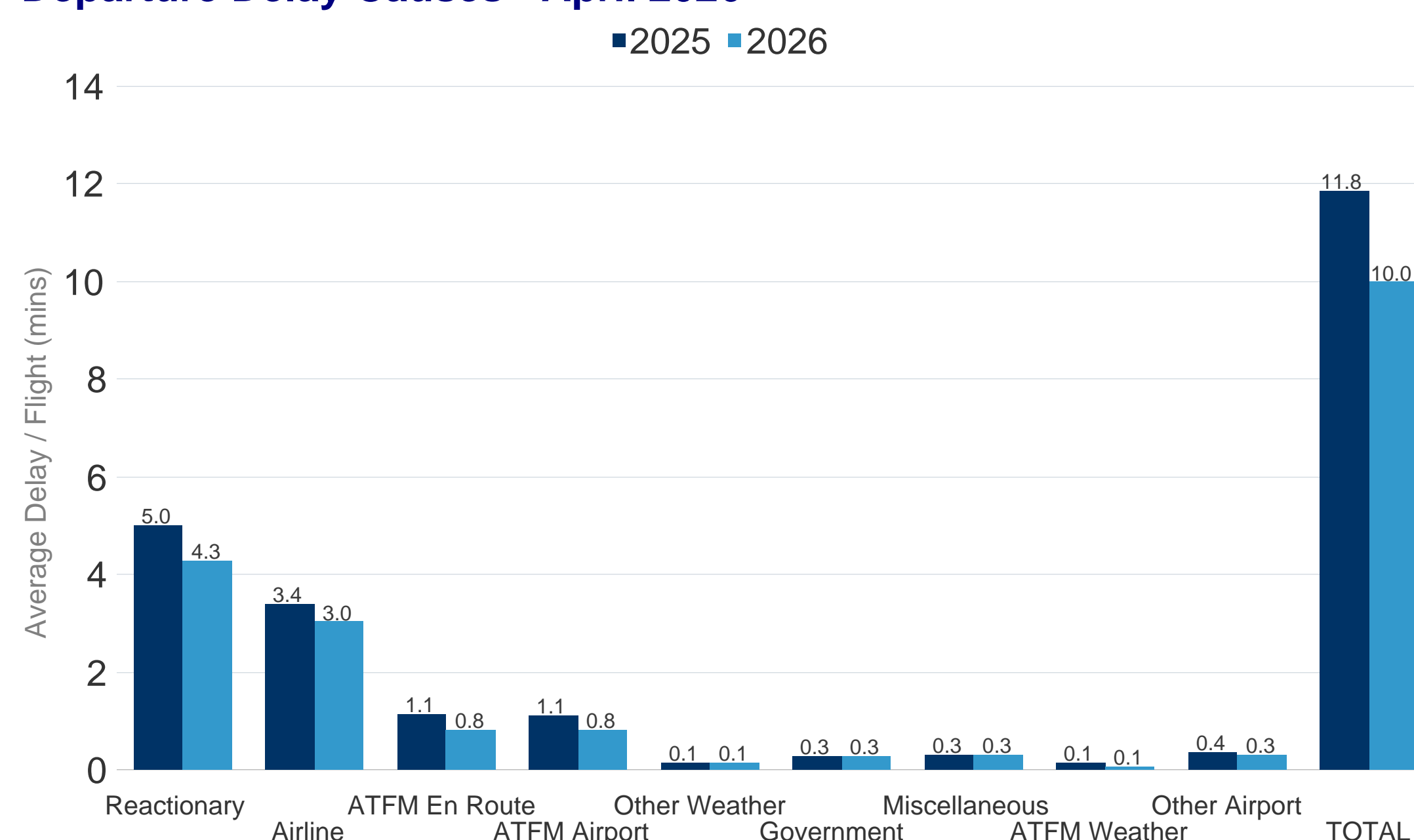


In April 2026 the average delay per flight on departure was 10.0 minutes per flight. This was a **decrease** of 1.9 minutes per flight when compared to April 2025 where the average delay per flight was 11.8 minutes.

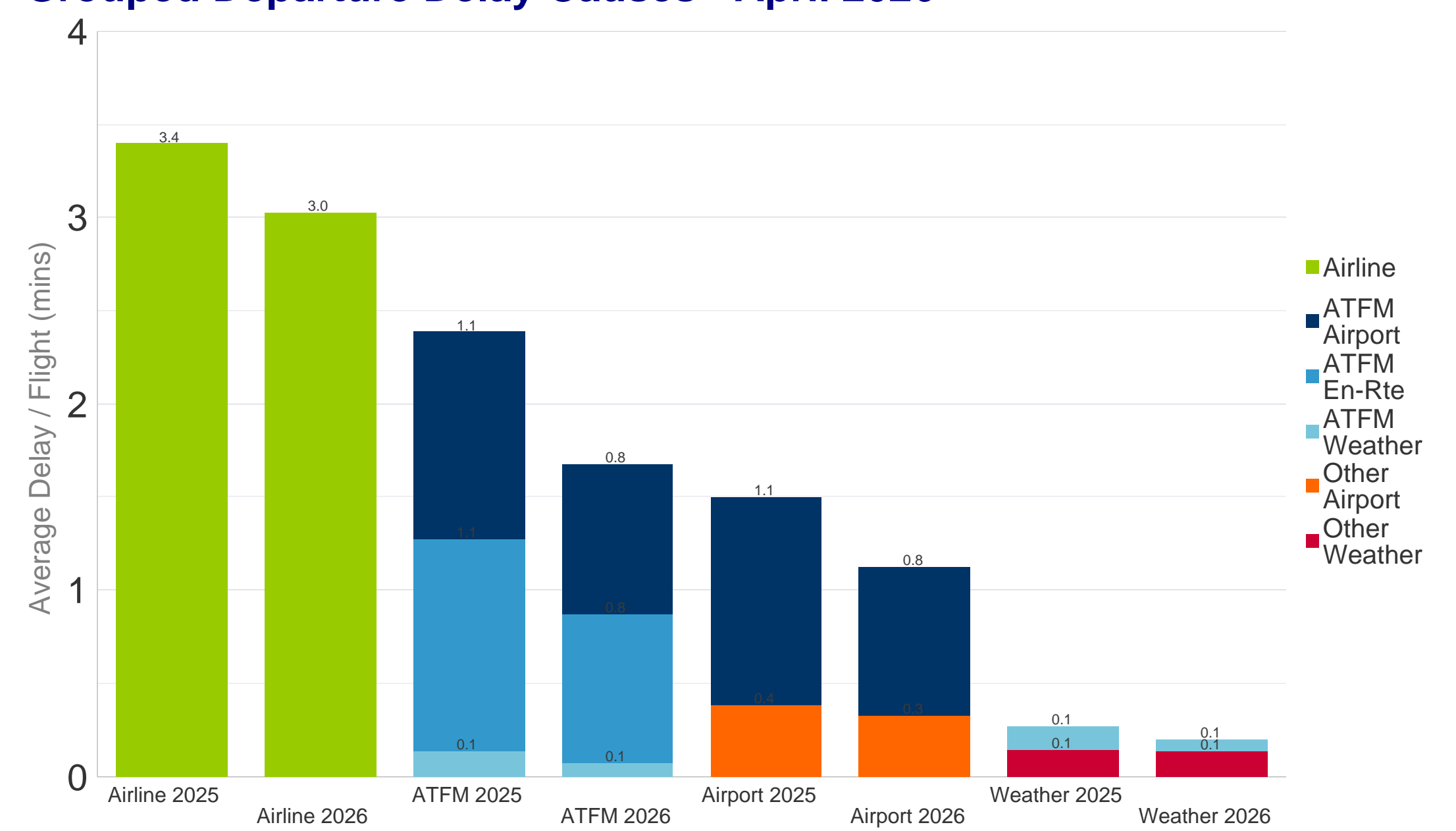
In April 2026 the average delay per flight on arrival was 8.6 minutes per flight. This was a **decrease** of 1.9 minutes per flight when compared to April 2025 where the average delay per flight was 10.5 minutes.

Further analysis of the delay causes shows that reactionary delay contributed 4.3 minutes to the average delay per flight in April 2026.

Departure Delay Causes - April 2026



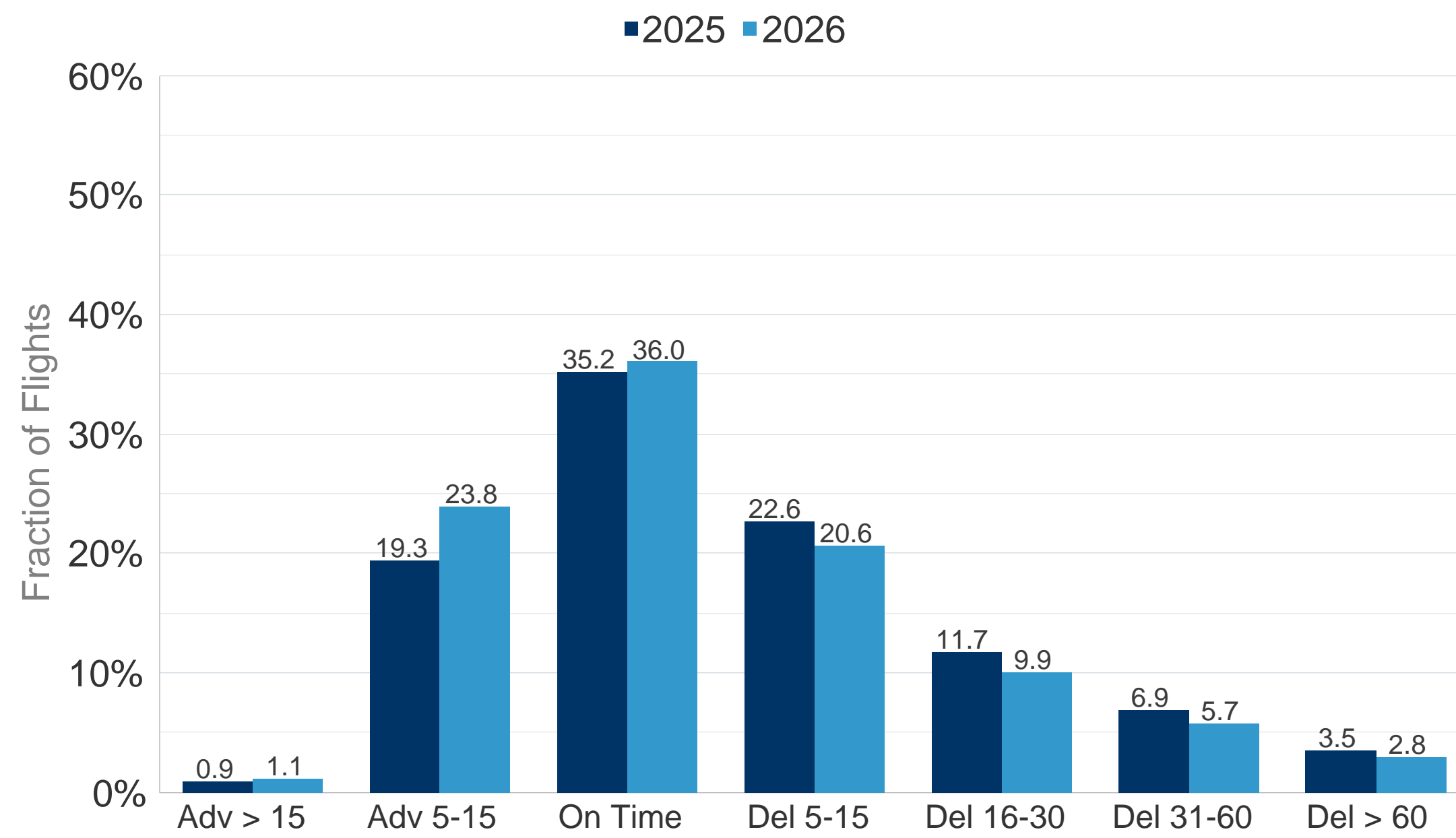
Grouped Departure Delay Causes - April 2026



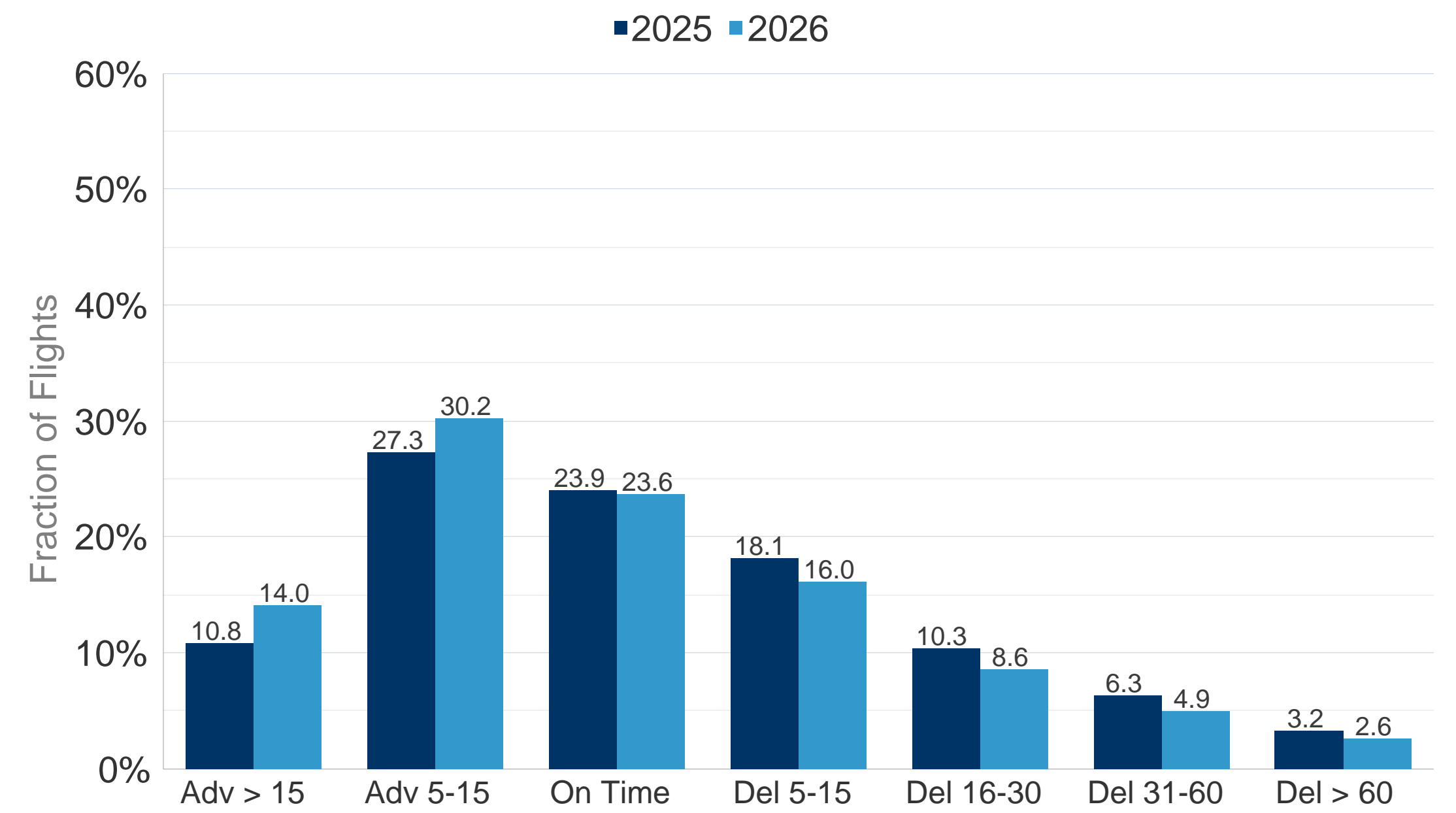
Delay from 1 minute onwards categorized by IATA-DelayCodes as :

- Reactionary : Codes 90-96
- Airline : Codes 0 to 69, 97
- ATFM Airport : Codes 83, 89
- ATFM En-Route : Codes 81 (incl. ATFM Weather) , 82
- Government : Codes 85, 86
- ATFM Weather : Codes 84
- Other Weather : Codes 71 to 79
- Other Airport : Codes 87,88
- Misc : Codes 98, 99

### All Causes Departure Punctuality - April 2026



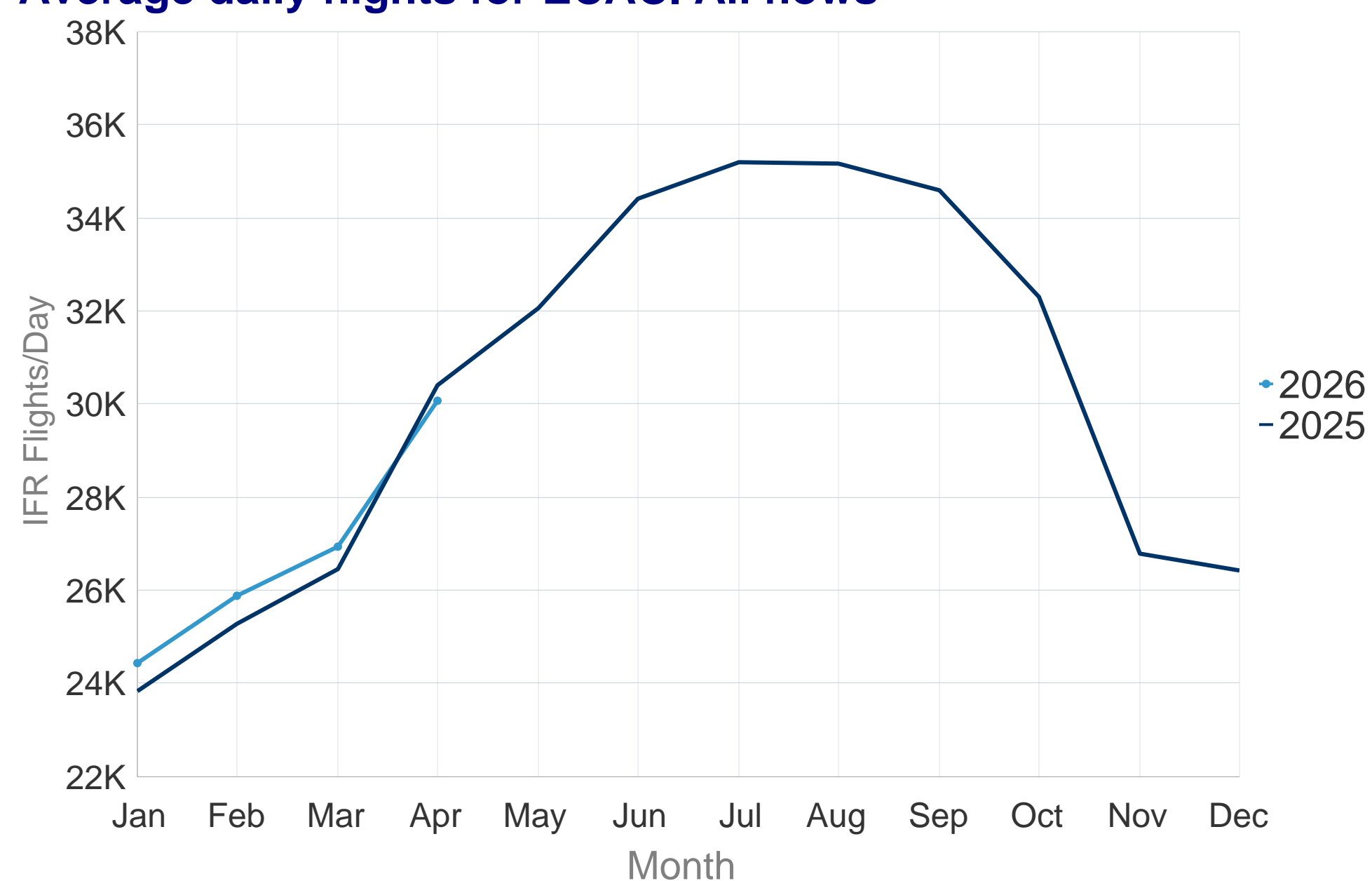
### All Causes Arrival Punctuality - April 2026



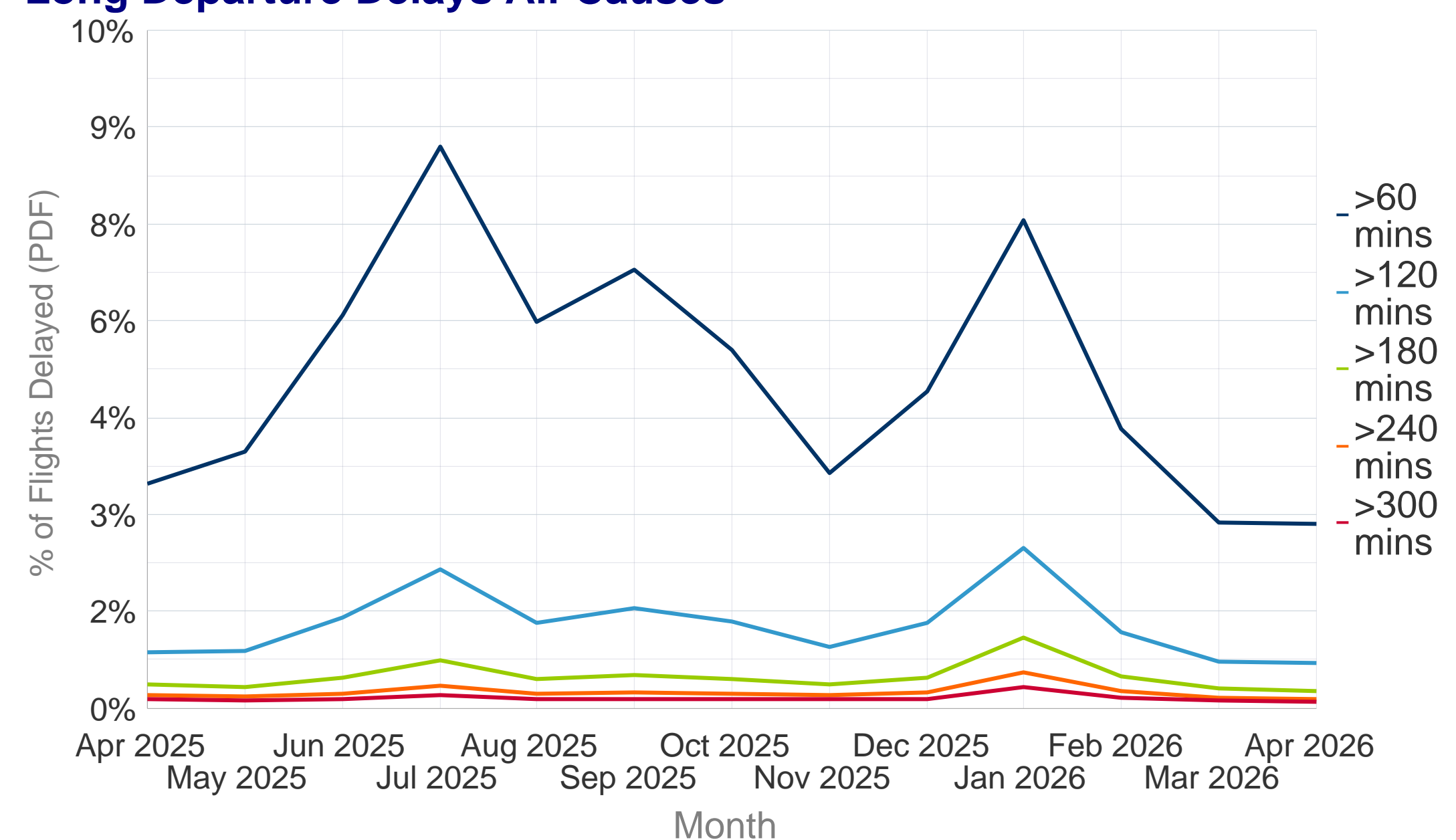
In April 2026, 36.0% of the flights departed within the 5 minutes threshold before or after the scheduled departure time (STD); **an increase** of 0.8 points from 35.2% compared to previous year. Flights delayed >30 minutes from all-causes **decreased** from 10.3% to 8.5%.

In April 2026, 23.6% of the flights arrived within the 5 minutes threshold before or after the scheduled arrival time (STA); **a decrease** of 0.3 points from 23.9% compared to previous year. Flights delayed >30 minutes from all-causes **decreased** from 9.5% to 7.5%.

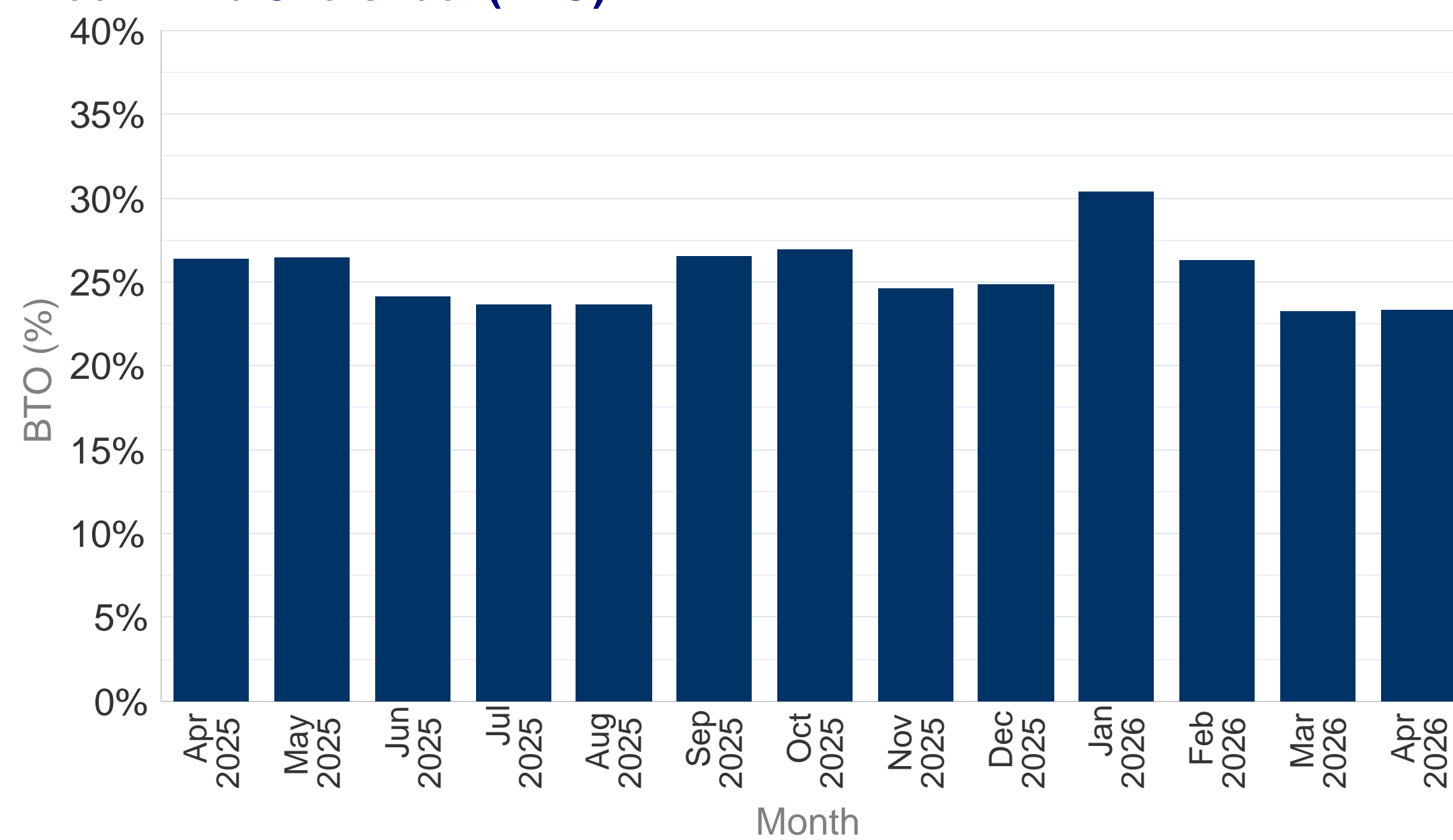
### Average daily flights for ECAC. All flows



### Long Departure Delays All-Causes



### Block Time Overshoot (BTO)



### Delay Difference Indicator - Flight (DDI-F)

