

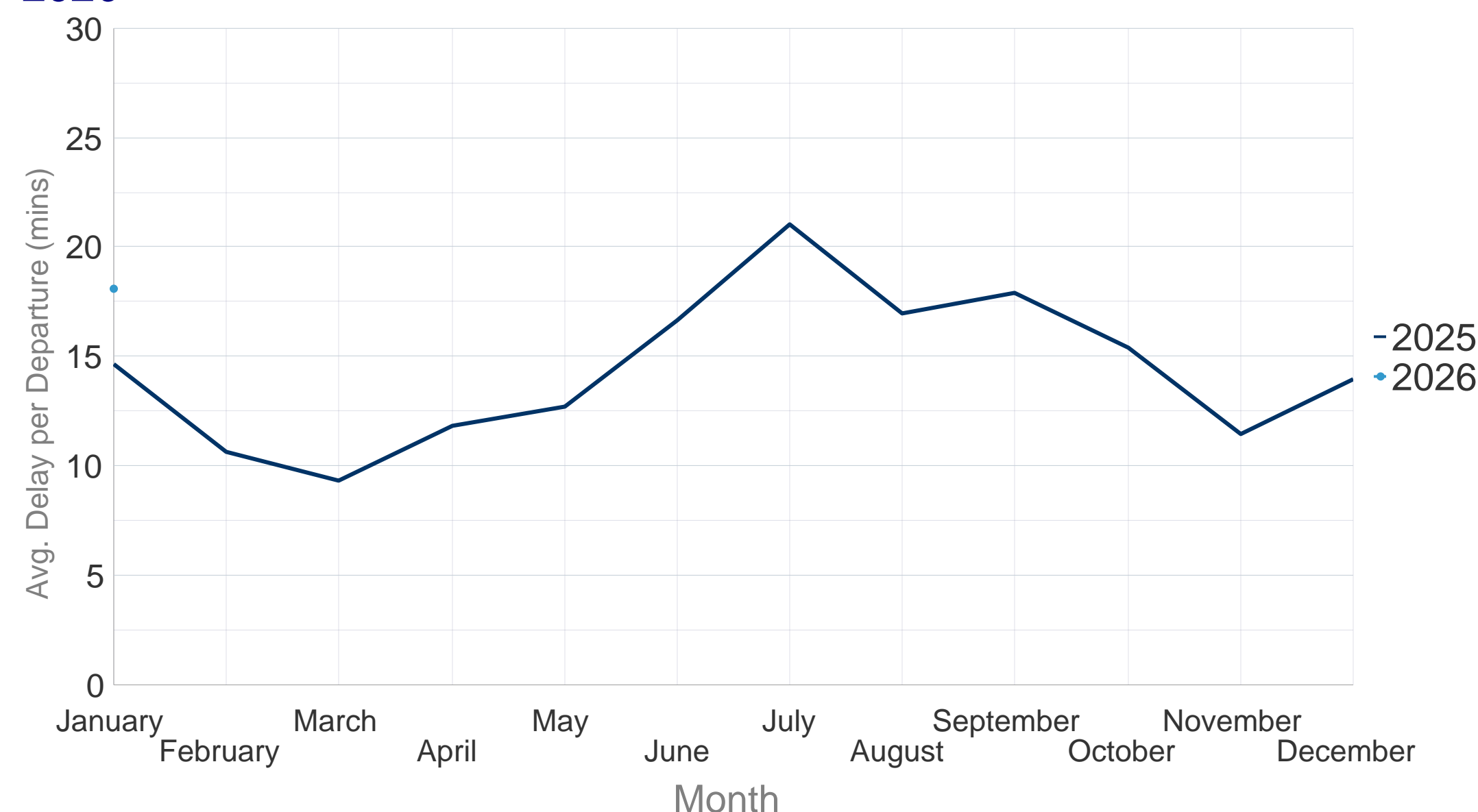
All-Causes Delays for Air Transport in Europe



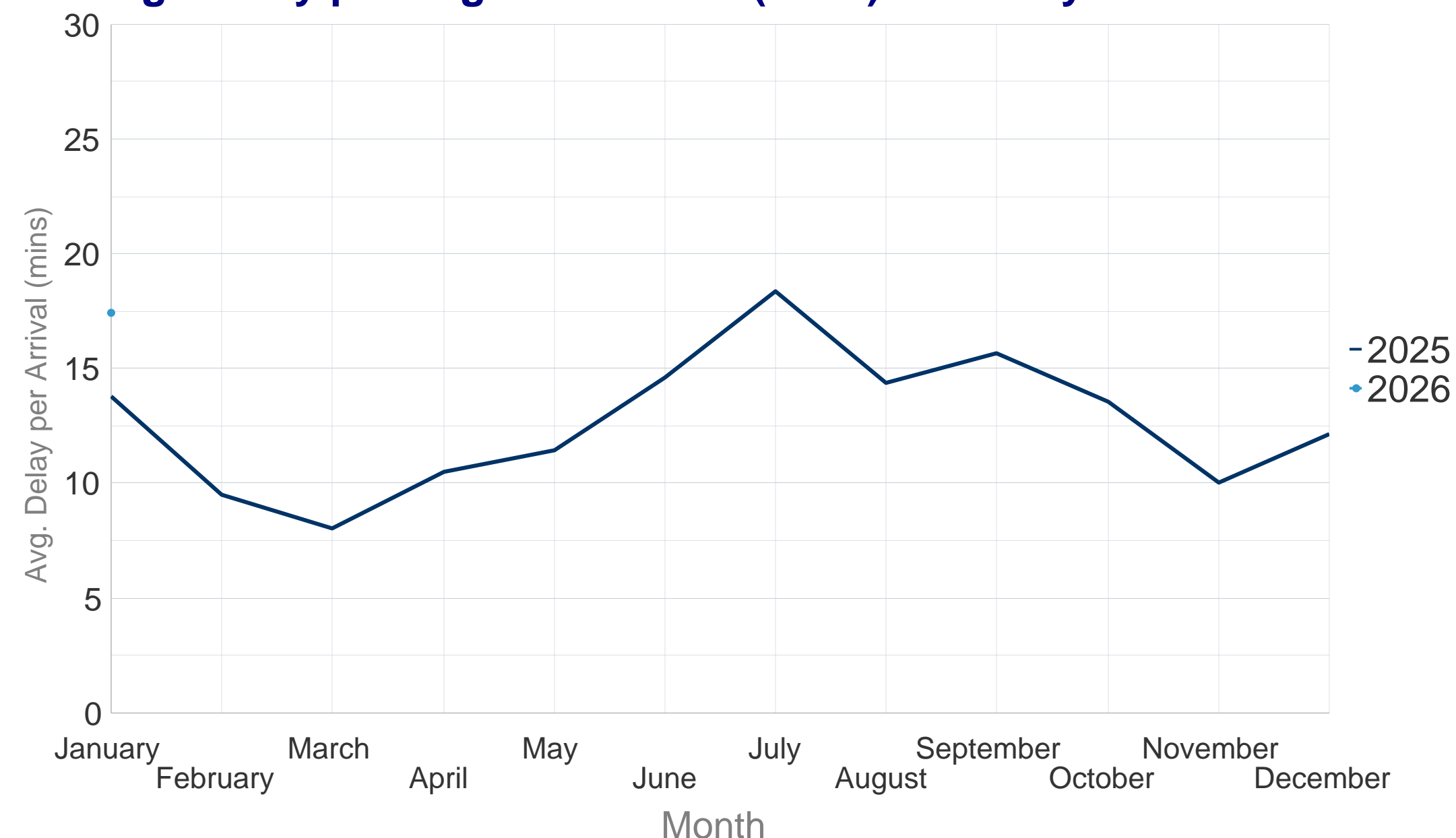
January 2026

In January 2026, ECAC traffic increased by 2.5% year on year. Ryanair remained the busiest operator, with Turkish Airlines and easyJet ranking second and third, reversing their December 2025 order. Seasonal weather mainly LVP and snow affected the network during January. Both Istanbul airports were affected by snow, LVP and CB activity, while London Heathrow saw weather-related regulations due to LVP and high winds. Paris CDG and Amsterdam Schiphol were heavily impacted by snow and associated LVP early in the month. Madrid Barajas experienced LVP and low cloud delays, particularly on 15 January. Lisbon's punctuality remained low due to thunderstorms and poor visibility, while Athens faced near-daily ATC capacity regulations, with additional weather impacts on 21 and 29 January.

Average Delay per Flight on Departure (mins) - January 2026



Average Delay per Flight on Arrival (mins) - January 2026

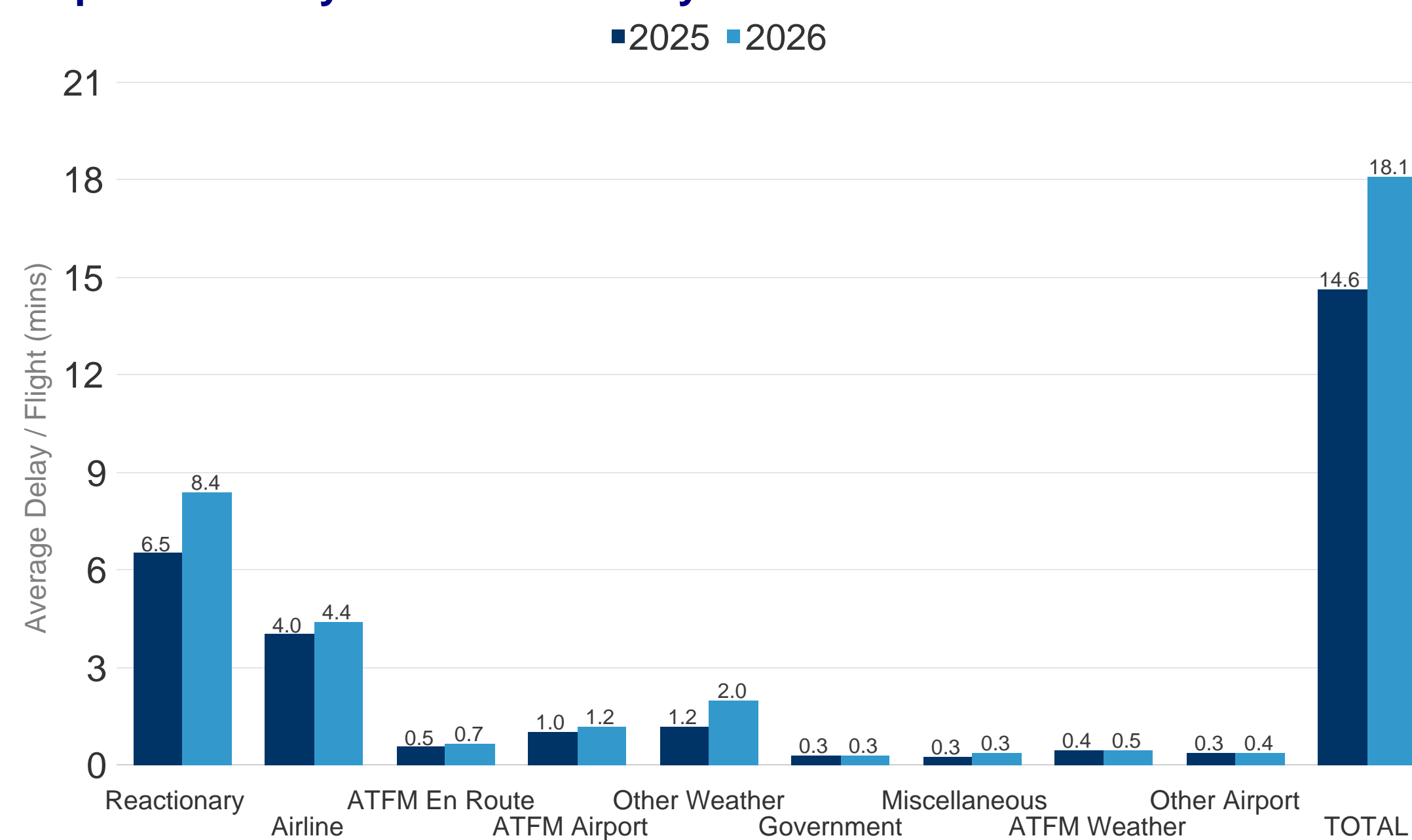


In January 2026 the average delay per flight on departure was 18.1 minutes per flight. This was an **increase** of 3.4 minutes per flight when compared to January 2025 where the average delay per flight was 14.6 minutes.

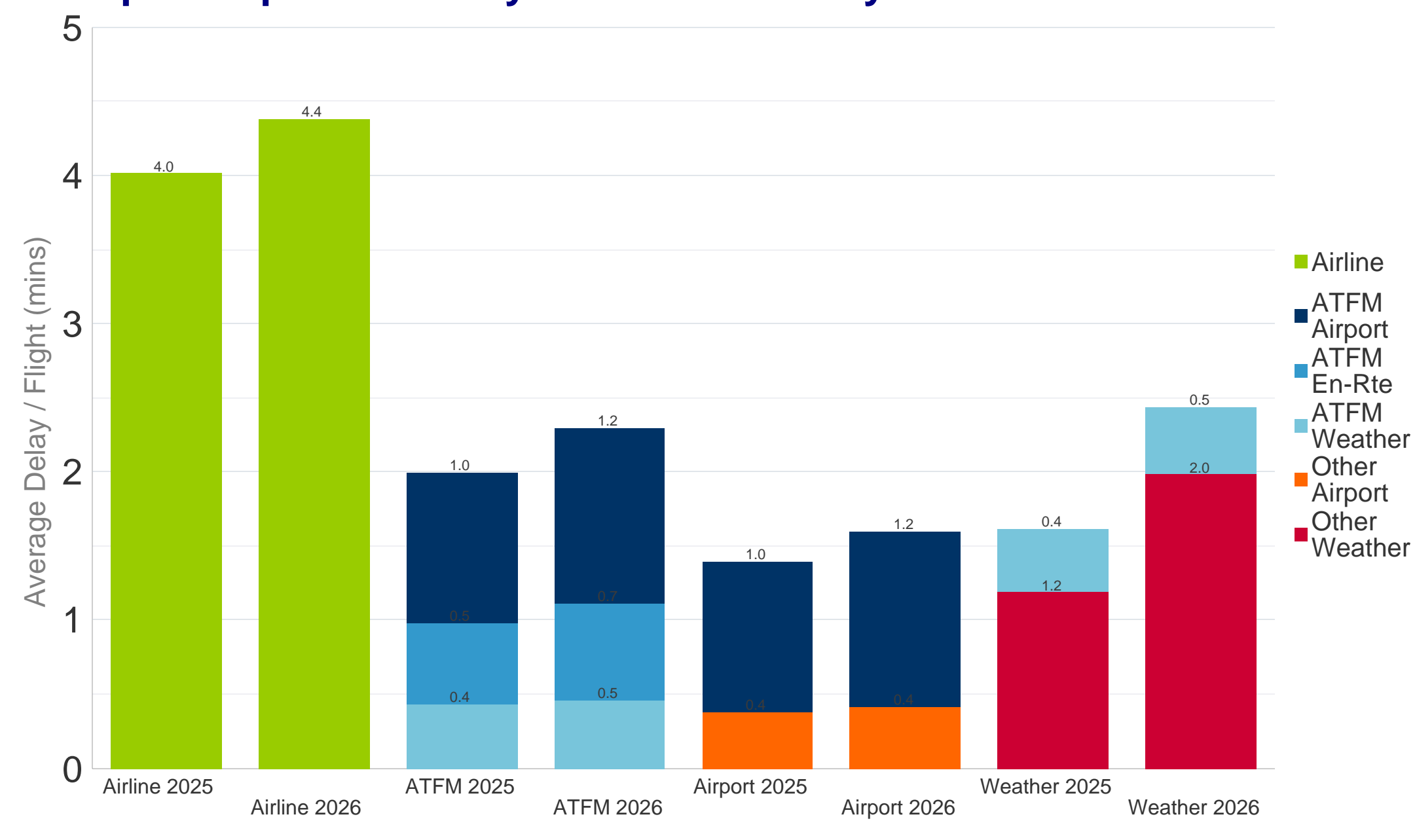
In January 2026 the average delay per flight on arrival was 17.4 minutes per flight. This was an **increase** of 3.6 minutes per flight when compared to January 2025 where the average delay per flight was 13.8 minutes.

Further analysis of the delay causes shows that reactionary delay contributed 8.4 minutes to the average delay per flight in January 2026.

Departure Delay Causes - January 2026



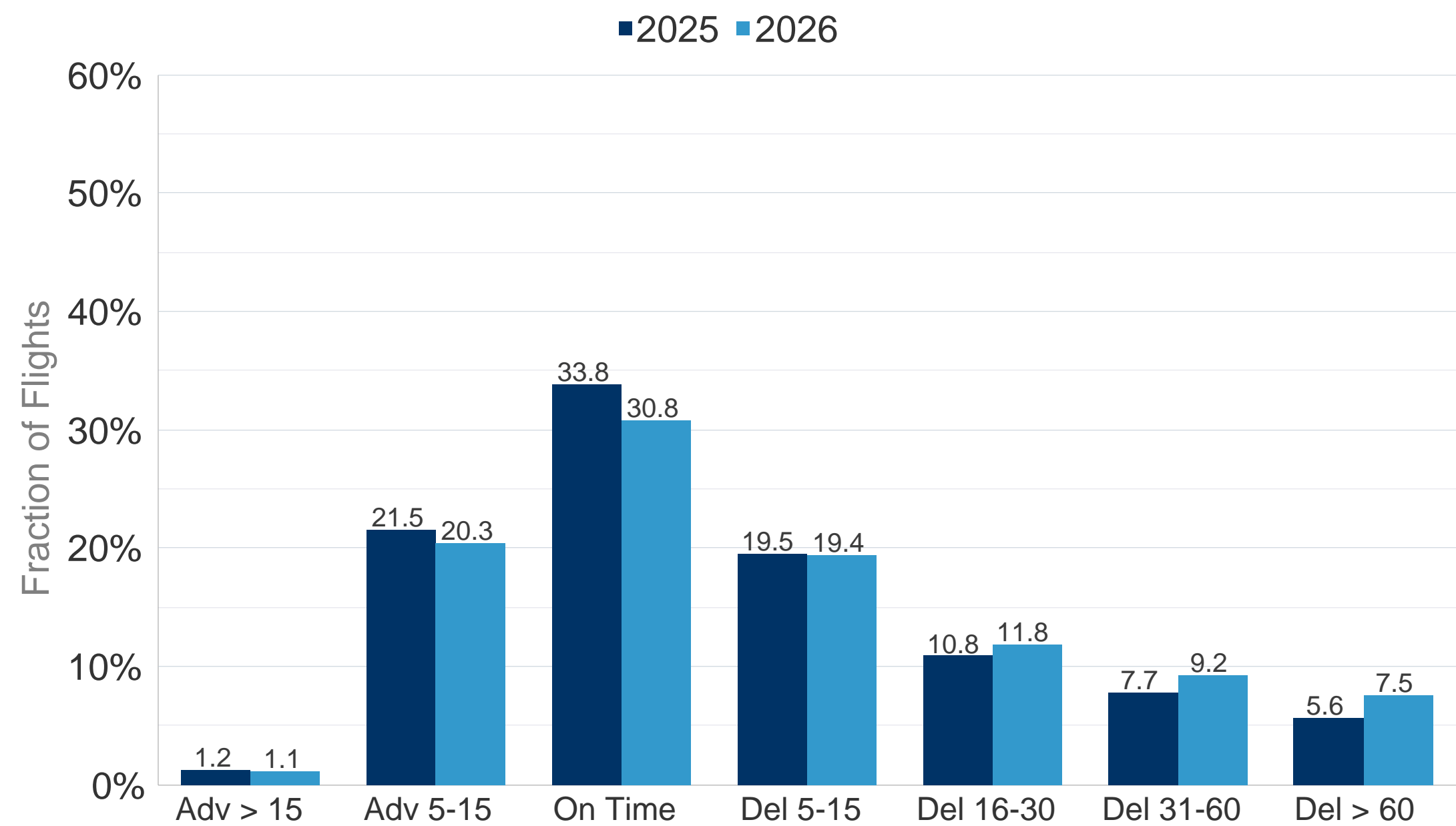
Grouped Departure Delay Causes - January 2026



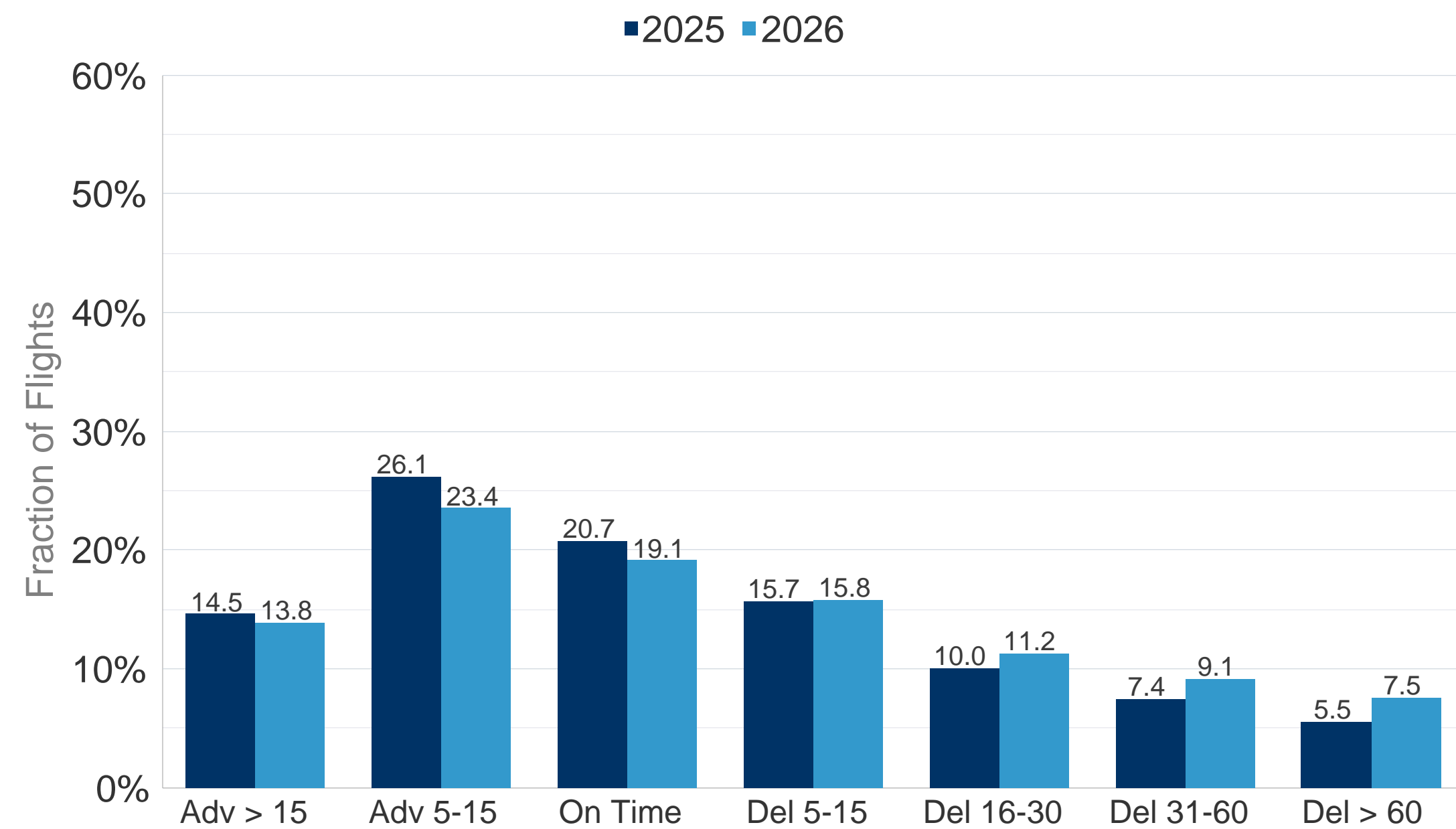
Delay from 1 minute onwards categorized by IATA-DelayCodes as :

- Reactionary : Codes 90-96
- Airline : Codes 0 to 69, 97
- ATFM Airport : Codes 83, 89
- ATFM En-Route : Codes 81 (incl. ATFM Weather) , 82
- Government : Codes 85, 86
- ATFM Weather : Codes 84
- Other Weather : Codes 71 to 79
- Other Airport : Codes 87,88
- Misc : Codes 98, 99

All Causes Departure Punctuality - January 2026



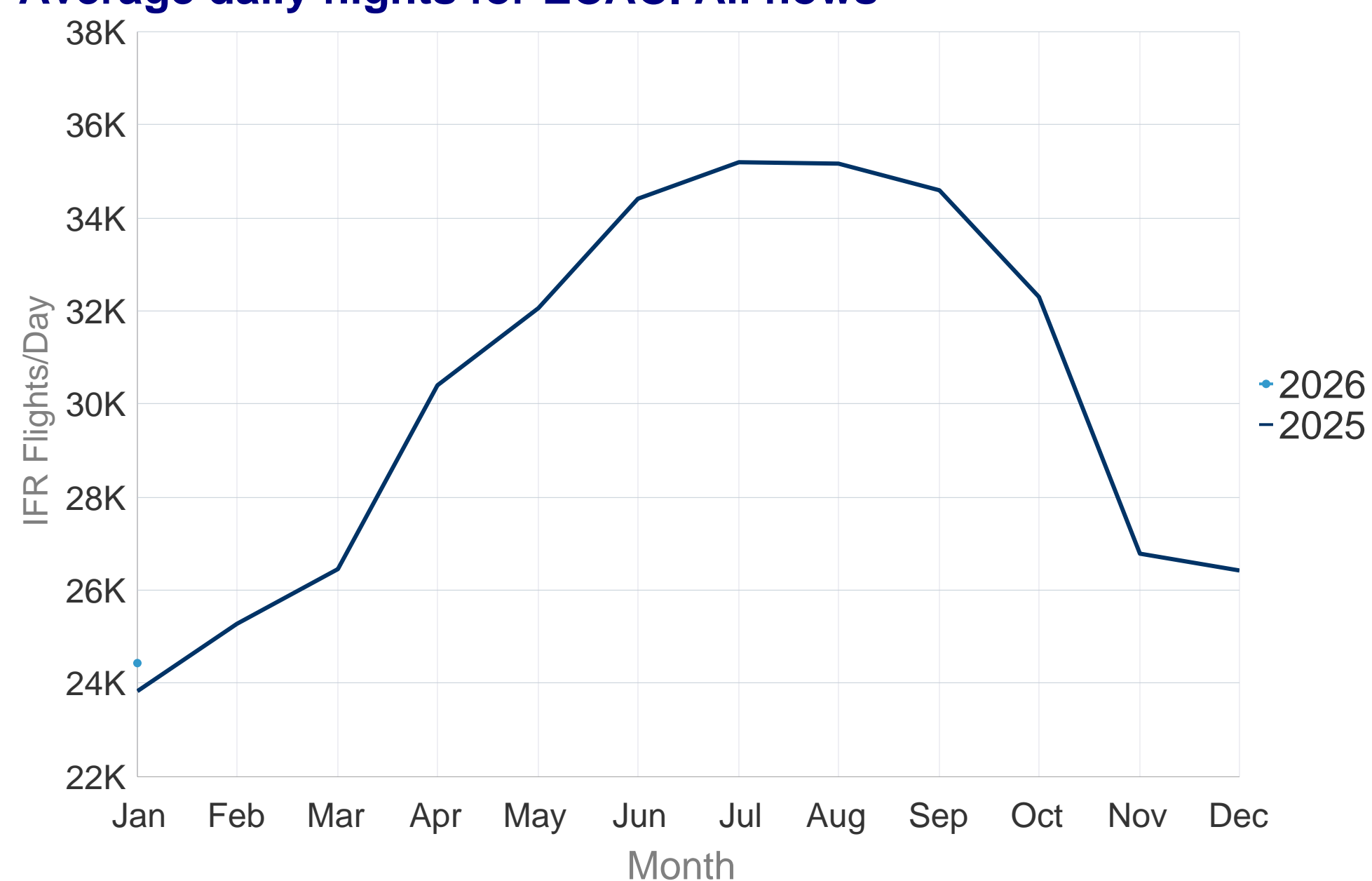
All Causes Arrival Punctuality - January 2026



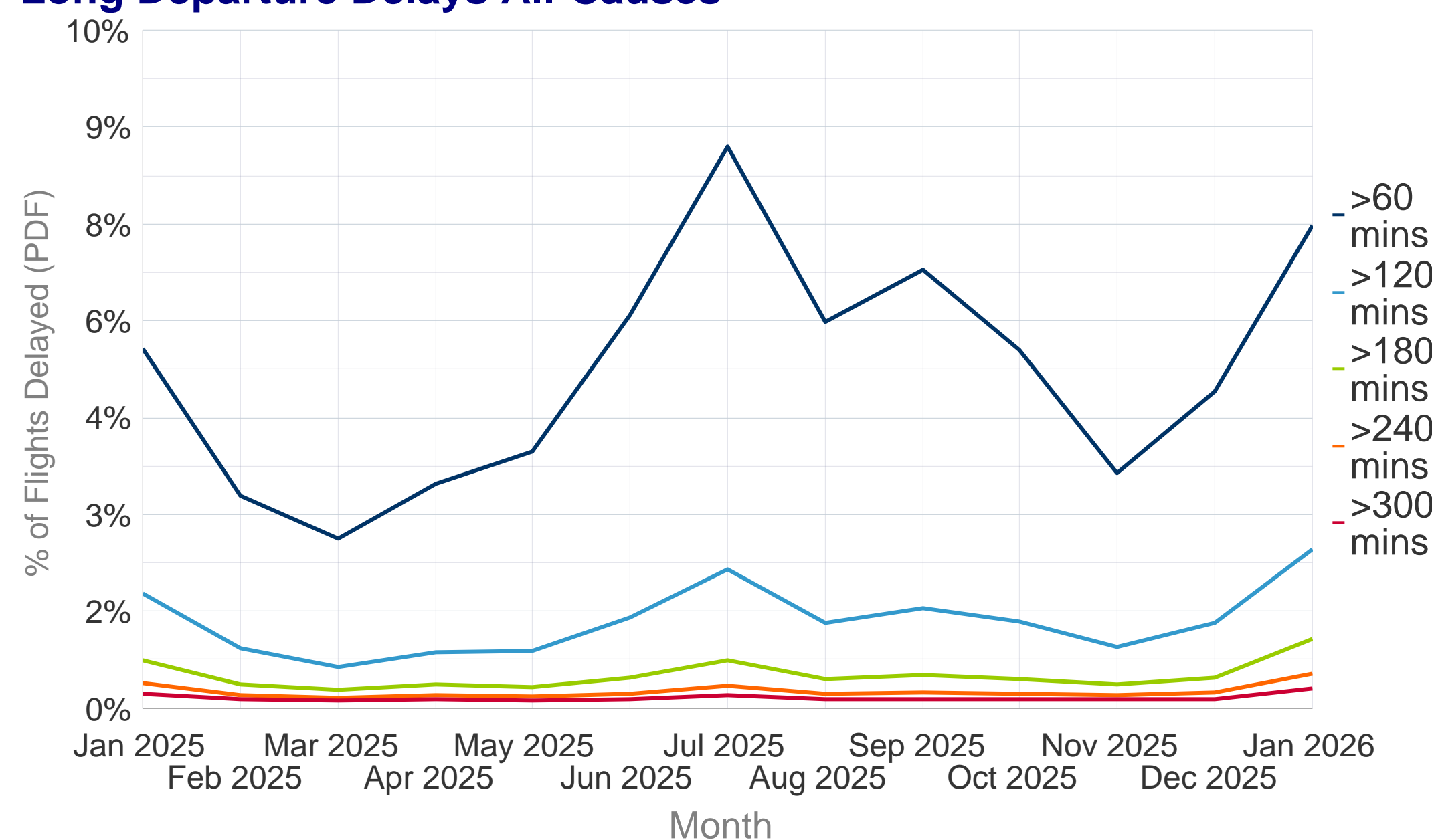
In January 2026, 30.8% of the flights departed within the 5 minutes threshold before or after the scheduled departure time (STD); a **decrease** of 3.0 points from 33.8% compared to previous year. Flights delayed >30 minutes from all-causes **increased** from 13.3% to 16.6%.

In January 2026, 19.1% of the flights arrived within the 5 minutes threshold before or after the scheduled arrival time (STA); a **decrease** of 1.7 points from 20.7% compared to previous year. Flights delayed >30 minutes from all-causes **increased** from 12.9% to 16.6%.

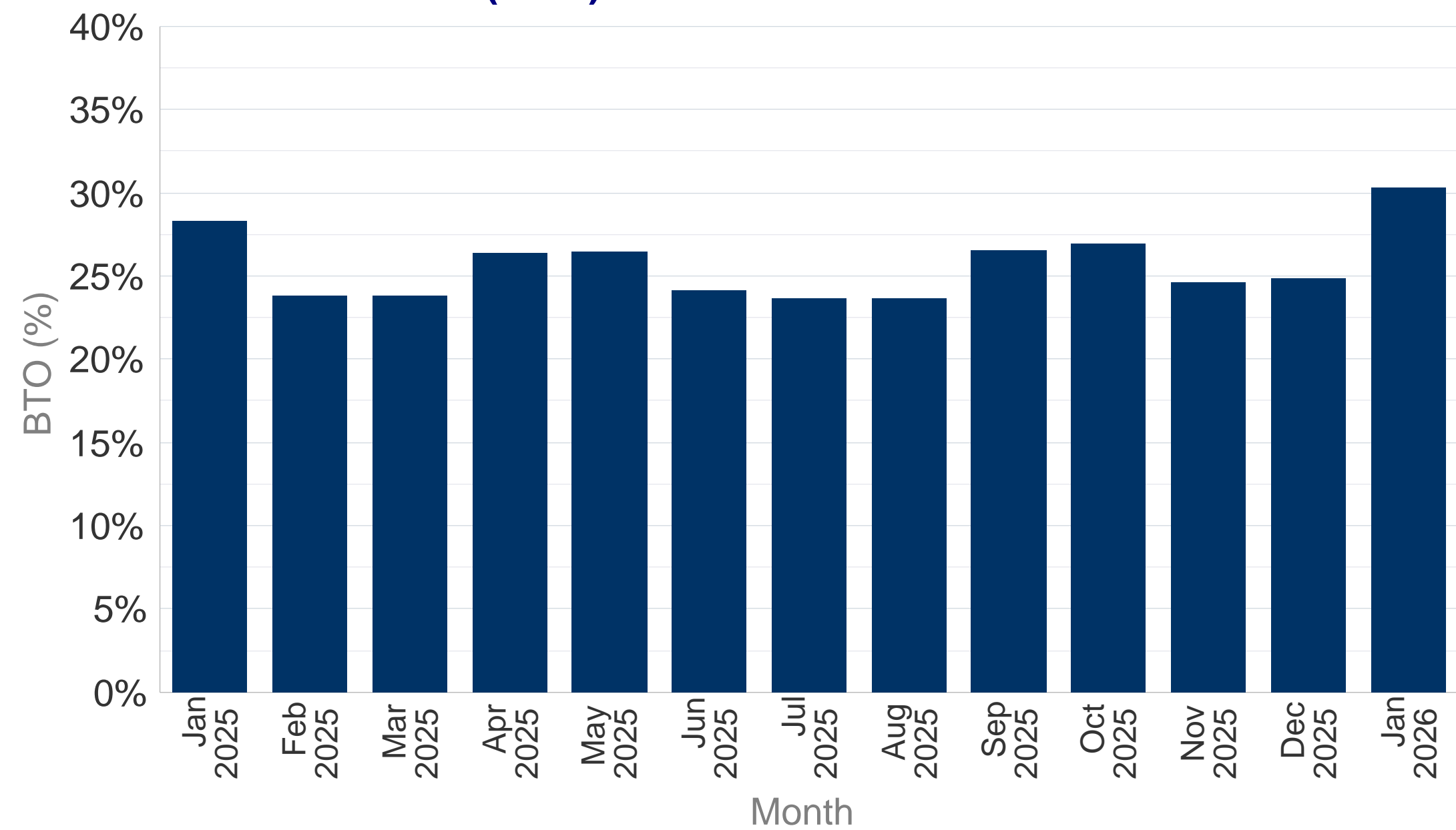
Average daily flights for ECAC. All flows



Long Departure Delays All-Causes



Block Time Overshoot (BTO)



Delay Difference Indicator - Flight (DDI-F)

