

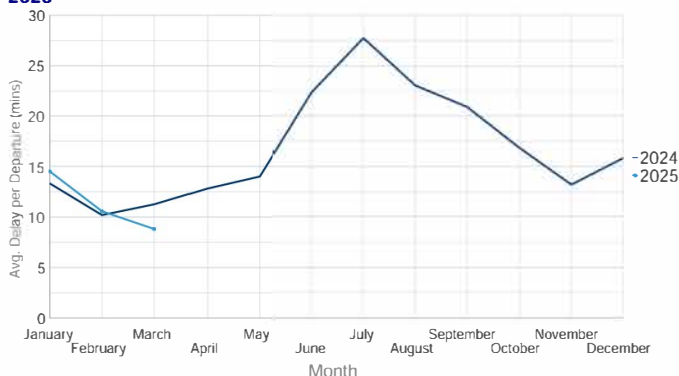
All-Causes Delays for Air Transport in Europe



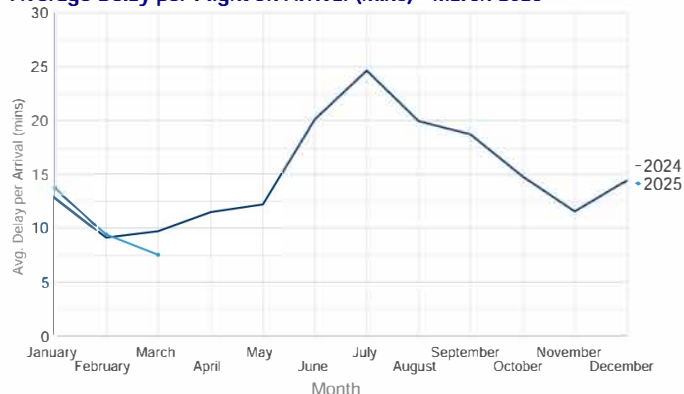
March 2025

March 2025 saw a 4.4% year-on-year increase in traffic across the ECAC area. Ryanair retained its position as the busiest airline, with easyJet and Turkish Airlines rounding out the top three. Istanbul Airport continued to lead in terms of passenger volume, followed by Amsterdam Schiphol and Paris Charles de Gaulle. Operational efficiency across several key airports was impacted by adverse seasonal weather, particularly low visibility and strong winds. Amsterdam Schiphol faced considerable delays, driven by prolonged low visibility conditions and ongoing aerodrome capacity constraints. London Heathrow managed to maintain relatively strong punctuality despite experiencing high delays on 10 March due to a vehicle fire in the terminal access tunnel. The airport was further impacted by a fire in a high voltage substation near London Heathrow which led to a loss of electrical power and the closure of the airfield. The airfield remained closed until early evening 21 March. Lisbon recorded one of the weakest punctuality performances among major hubs, primarily due to a combination of low visibility, cumulonimbus clouds, and strong winds. Barcelona also encountered weather-induced delays, with 23 March being especially disruptive due to convective storm activity.

Average Delay per Flight on Departure (mins) - March 2025



Average Delay per Flight on Arrival (mins) - March 2025

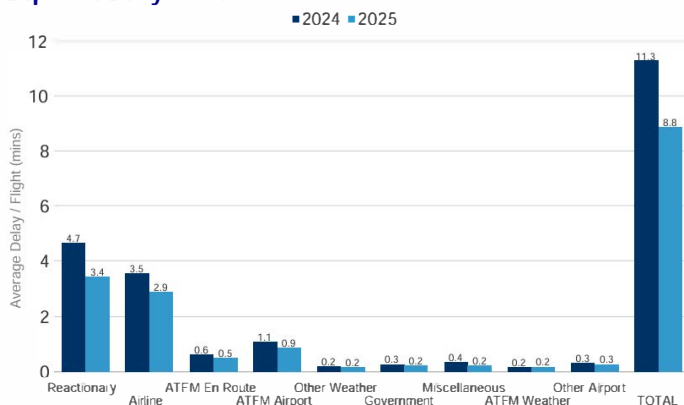


In March 2025 the average delay per flight on departure was 8.8 minutes per flight. This was a decrease of 2.5 minutes per flight when compared to March 2024 where the average delay per flight was 11.3 minutes.

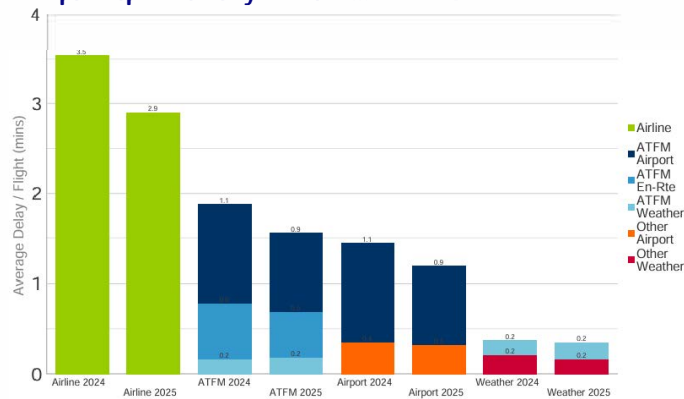
In March 2025 the average delay per flight on arrival was 7.5 minutes per flight. This was a decrease of 2.2 minutes per flight when compared to March 2024 where the average delay per flight was 9.7 minutes.

Further analysis of the delay causes shows that reactionary delay contributed 3.4 minutes to the average delay per flight in March 2025.

Departure Delay Causes - March 2025



Grouped Departure Delay Causes - March 2025

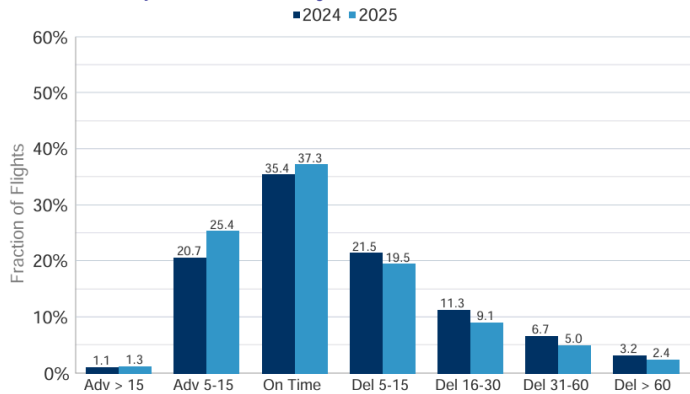


Delay from 1 minute onwards categorized by IATA-DelayCodes as :

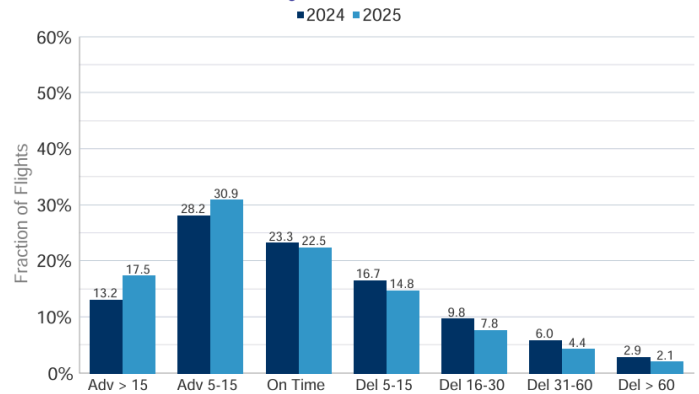
- Reactionary : Codes 90-96
- Airline : Codes 0 to 69, 97
- ATFM Airport : Codes 83, 89
- ATFM En-Route : Codes 81 (incl. ATFM Weather) , 82
- Government : Codes 85, 86
- ATFM Weather : Codes 84
- Other Weather : Codes 71 to 79
- Other Airport : Codes 87,88
- Misc : Codes 98, 99

This report is based on partial airline data to be updated once the full dataset is available. Current CODA Coverage of IFR Flights in ECAC March 2025: 61.1%

All Causes Departure Punctuality - March 2025



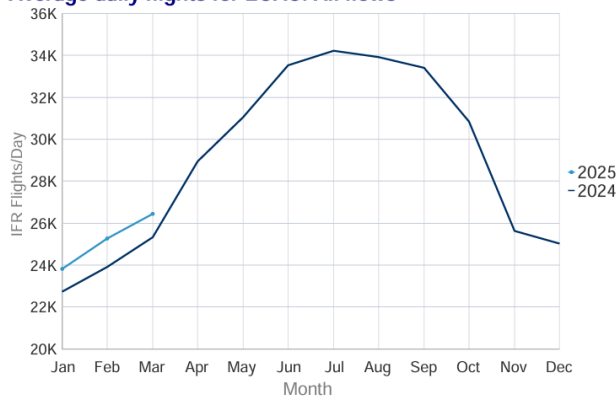
All Causes Arrival Punctuality - March 2025



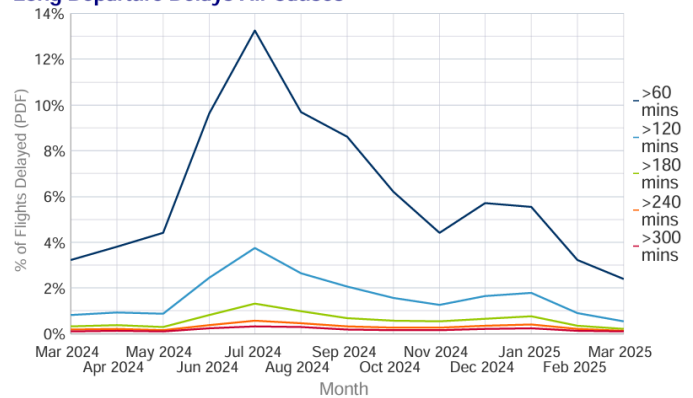
In March 2025, 37.3% of the flights departed within the 5 minutes threshold before or after the scheduled departure time (STD); **an increase** of 1.9 points from 35.4% compared to previous year. Flights delayed >30 minutes from all-causes **decreased** from 9.9% to 7.4%.

In March 2025, 22.5% of the flights arrived within the 5 minutes threshold before or after the scheduled arrival time (STA); **a decrease** of 0.8 points from 23.3% compared to previous year. Flights delayed >30 minutes from all-causes **decreased** from 8.9% to 6.5%.

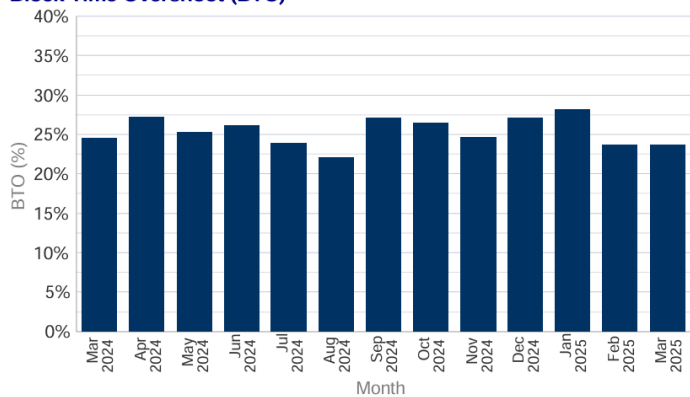
Average daily flights for ECAC. All flows



Long Departure Delays All-Causes



Block Time Overshoot (BTO)



Delay Difference Indicator - Flight (DDI-F)

