

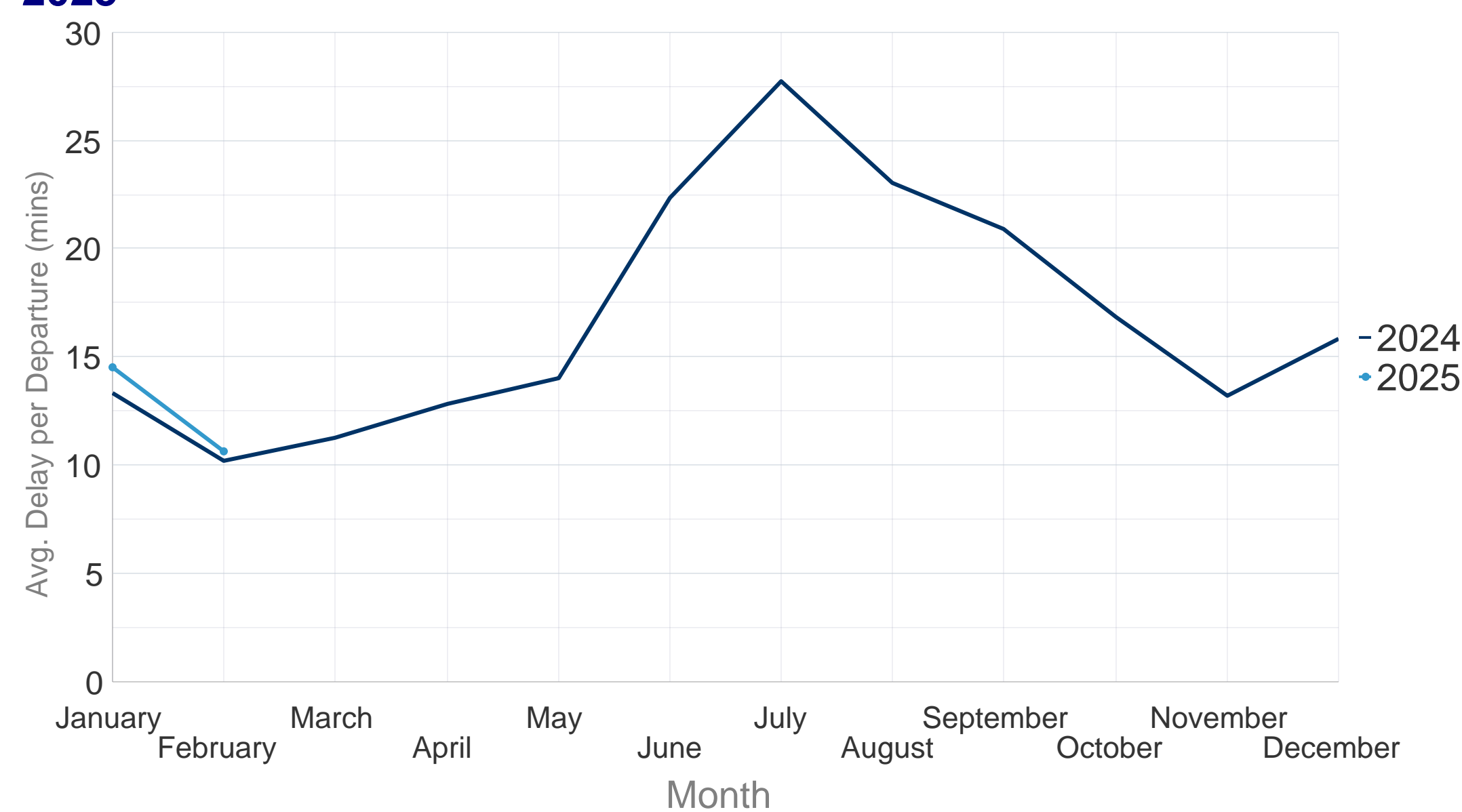
All-Causes Delays for Air Transport in Europe



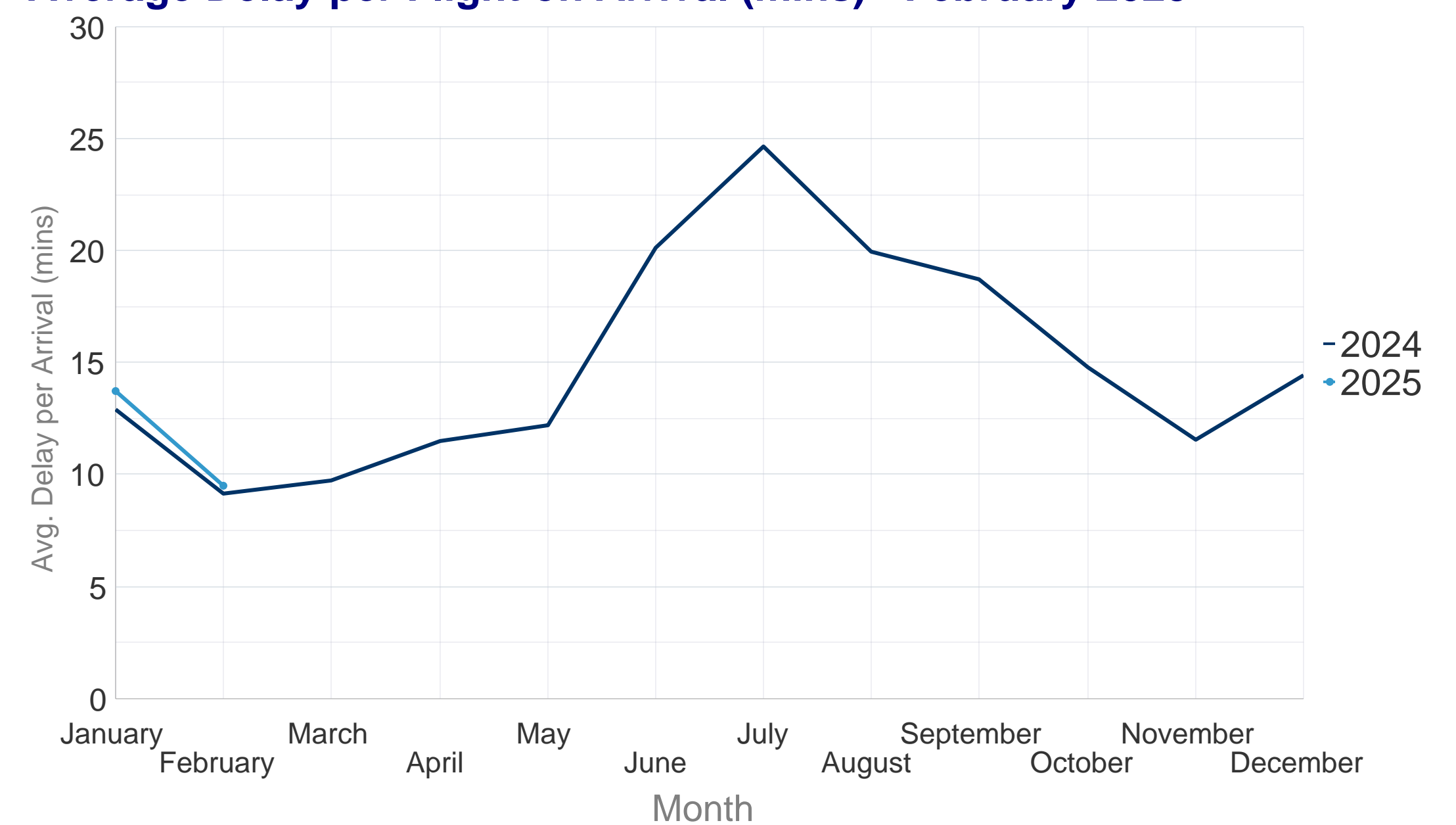
February 2025

In February 2025, ECAC traffic grew by 2.0% compared to February 2024. Ryanair remained the busiest airline, while easyJet and Turkish Airlines swapped positions again from the previous month. Istanbul Airport retained its status as the busiest airport, followed by London Heathrow and Amsterdam Schiphol, which held their rankings. Seasonal winter weather continued to affect airport operations and arrival punctuality throughout February. Amsterdam Schiphol faced notable delays due to low visibility and ongoing daily aerodrome capacity regulations. In contrast, London Gatwick experienced fewer disruptions, benefiting from fewer days of strong winds and low visibility compared to the previous year. Several airports saw slight improvements. London Heathrow recorded better punctuality as weather disruptions eased, while Oslo experienced fewer weather-related delays compared to last year, when fog and snow were significant factors. Lisbon continued to suffer from weather-related delays, such as low visibility and cumulonimbus clouds (CBs). Nevertheless, its performance remained stable, reflecting trends seen at other airports.

Average Delay per Flight on Departure (mins) - February 2025



Average Delay per Flight on Arrival (mins) - February 2025

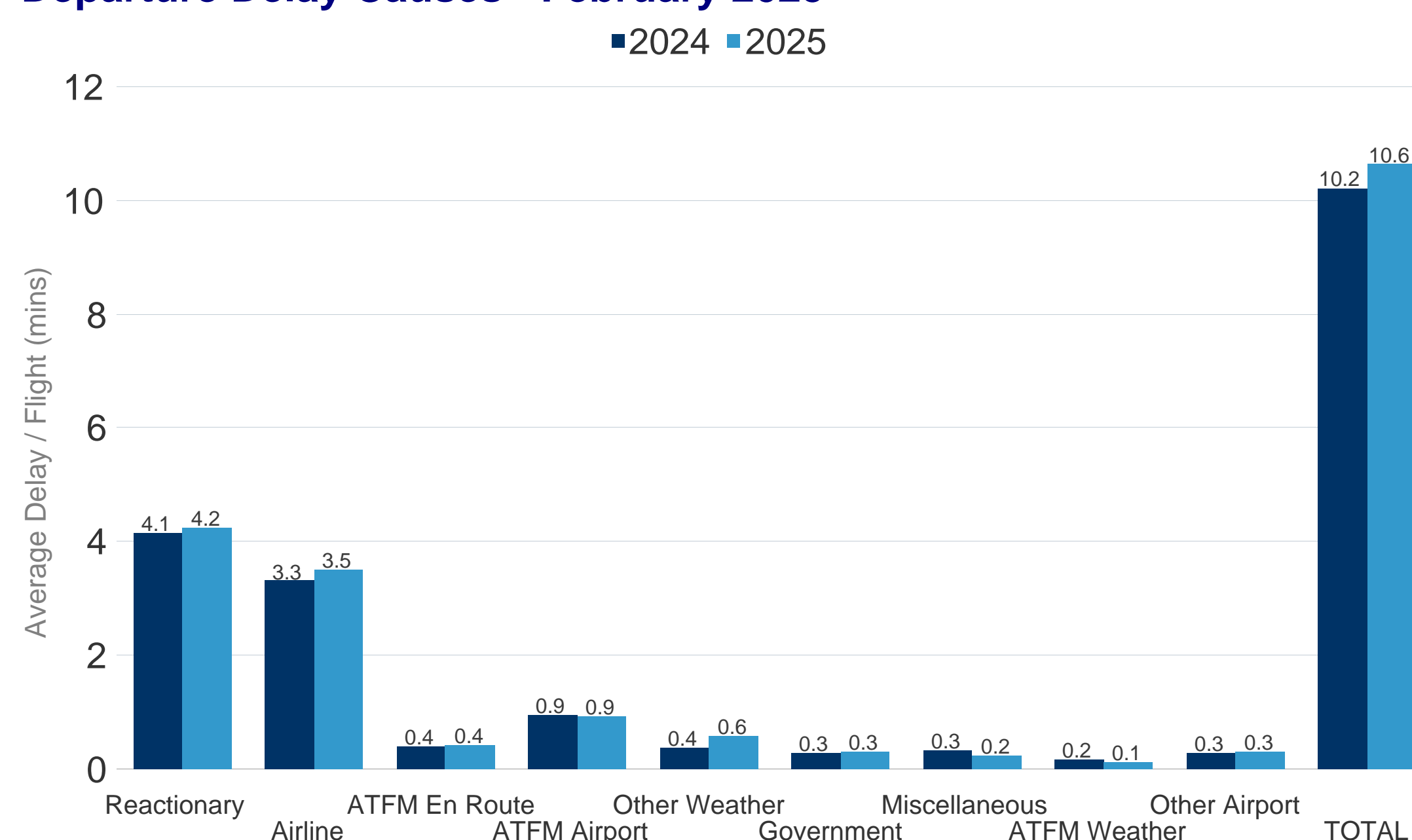


In February 2025 the average delay per flight on departure was 10.6 minutes per flight. This was **an increase** of 0.4 minutes per flight when compared to February 2024 where the average delay per flight was 10.2 minutes.

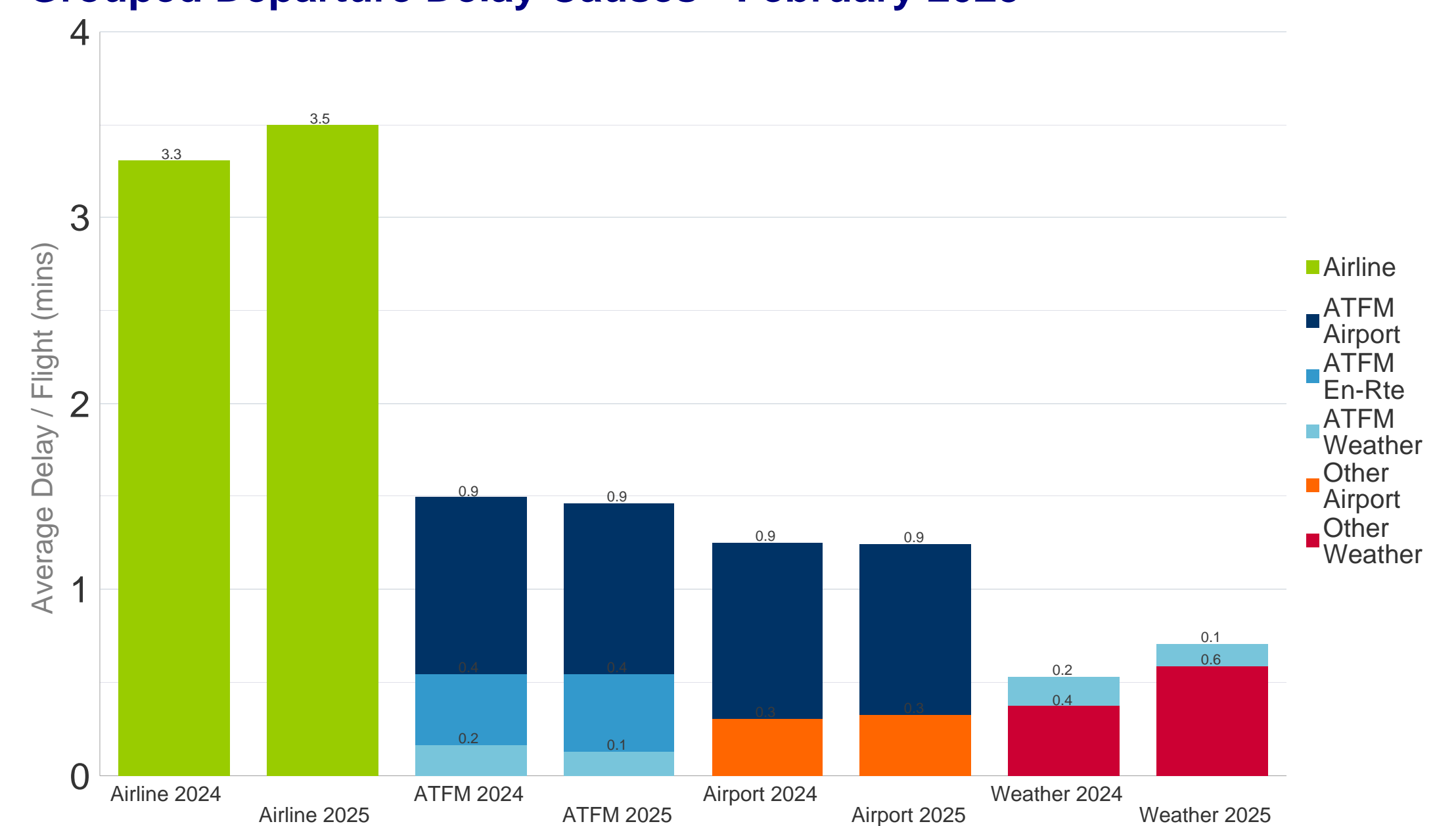
In February 2025 the average delay per flight on arrival was 9.5 minutes per flight. This was **an increase** of 0.4 minutes per flight when compared to February 2024 where the average delay per flight was 9.1 minutes.

Further analysis of the delay causes shows that reactionary delay contributed 4.2 minutes to the average delay per flight in February 2025.

Departure Delay Causes - February 2025



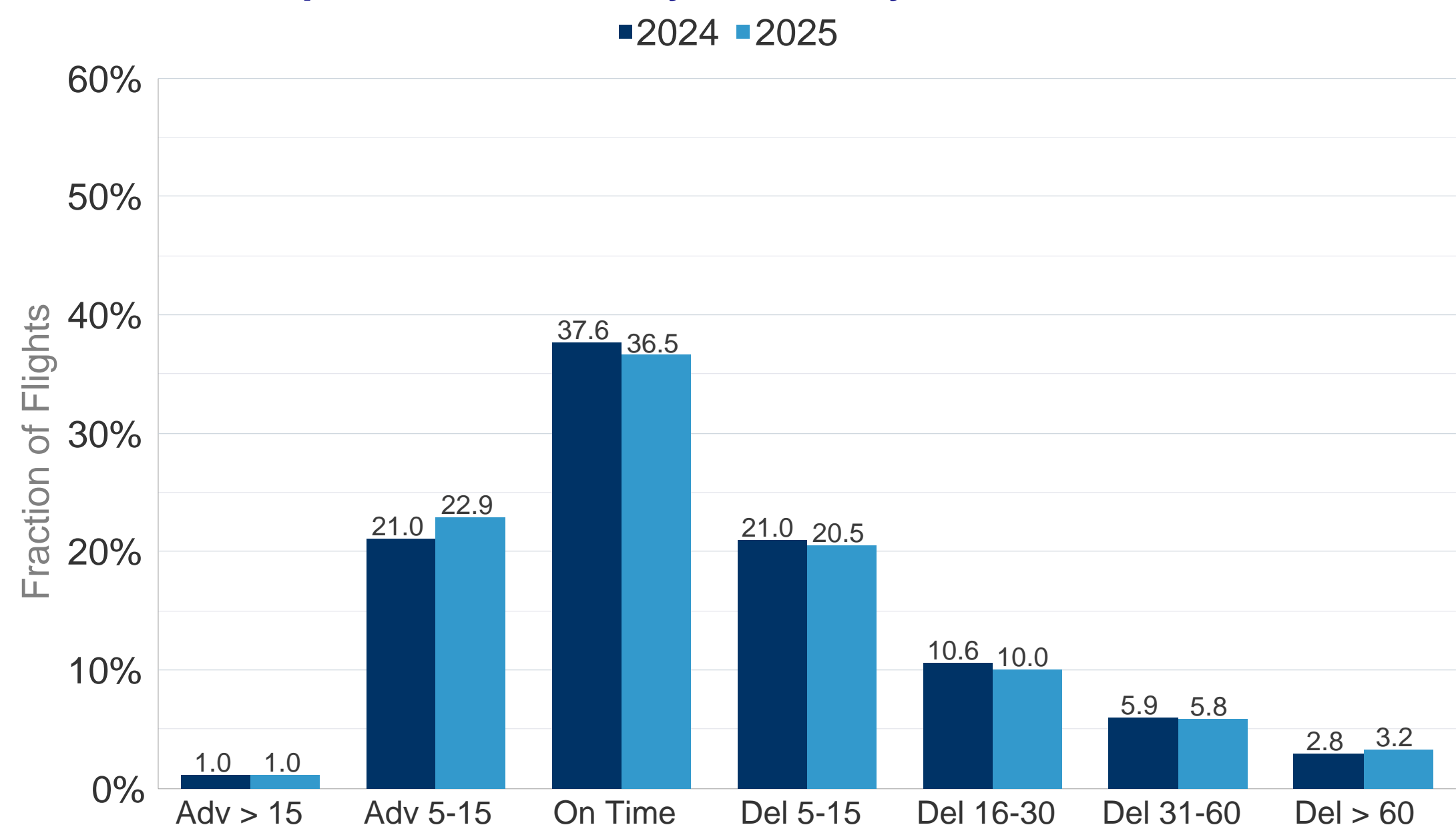
Grouped Departure Delay Causes - February 2025



Delay from 1 minute onwards categorized by IATA-DelayCodes as :

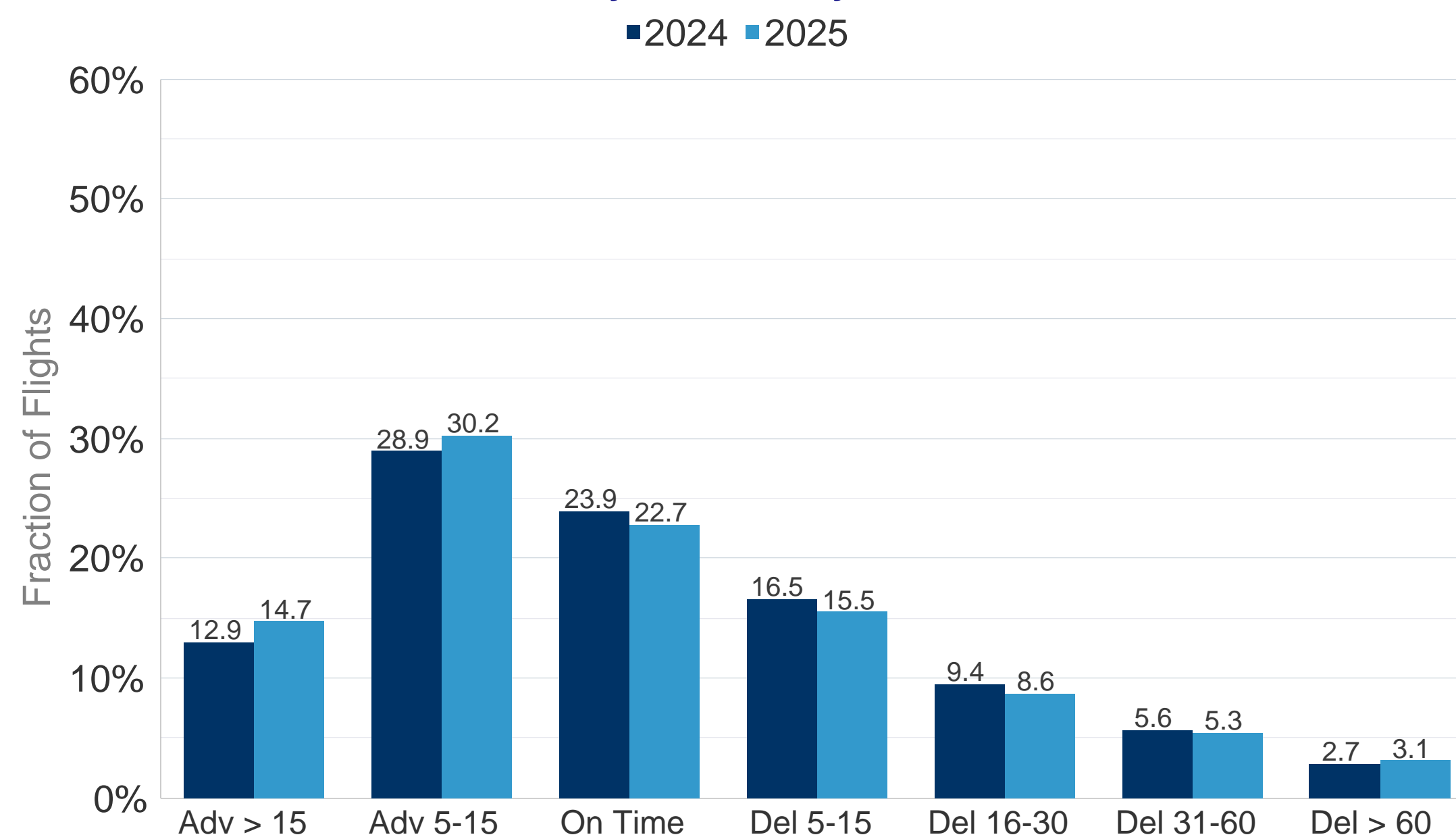
- Reactionary : Codes 90-96
- Airline : Codes 0 to 69, 97
- ATFM Airport : Codes 83, 89
- ATFM En-Route : Codes 81 (incl. ATFM Weather) , 82
- Government : Codes 85, 86
- ATFM Weather : Codes 84
- Other Weather : Codes 71 to 79
- Other Airport : Codes 87,88
- Misc : Codes 98, 99

All Causes Departure Punctuality - February 2025



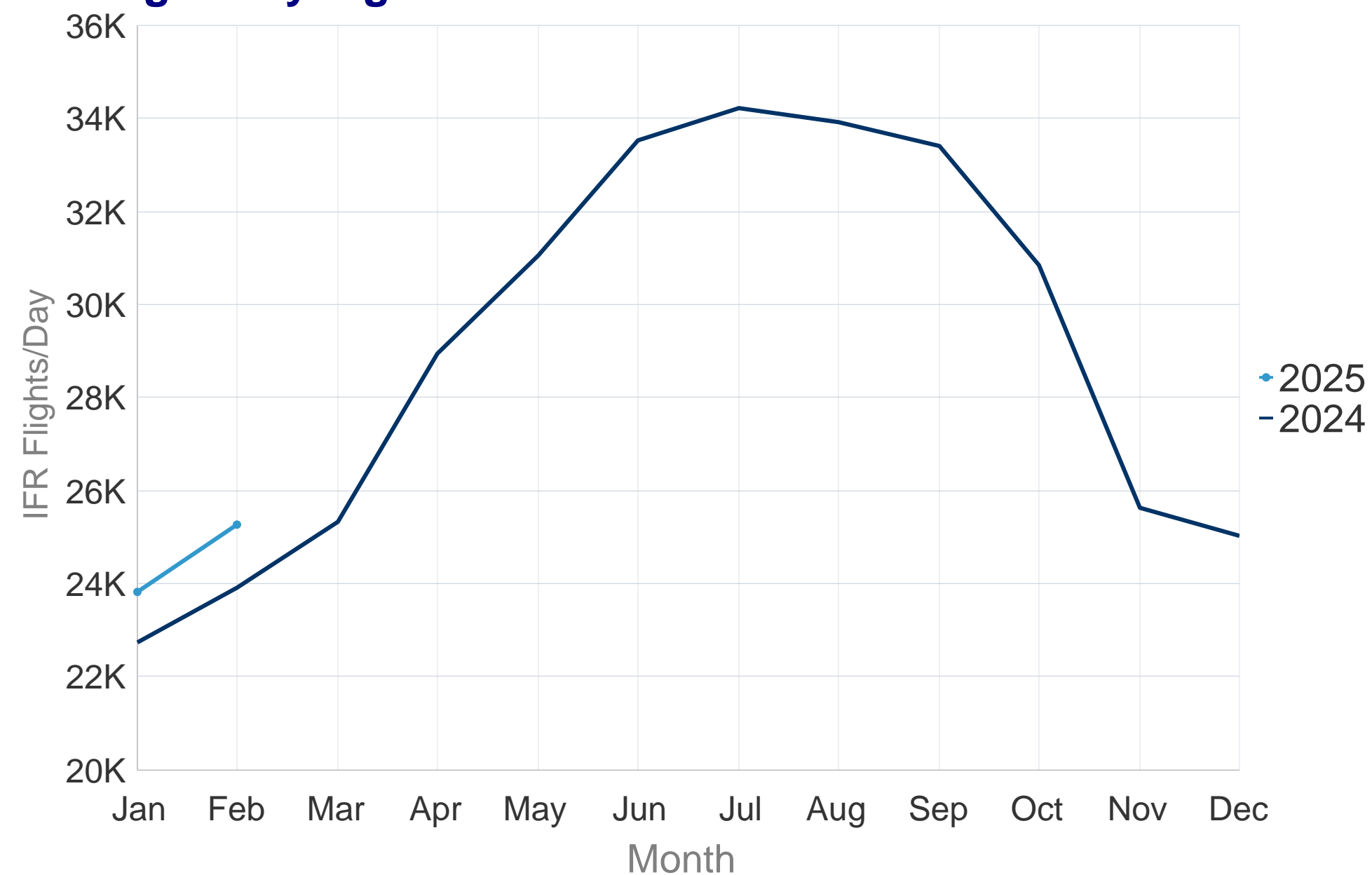
In February 2025, 36.5% of the flights departed within the 5 minutes threshold before or after the scheduled departure time (STD); a decrease of 1.1 points from 37.6% compared to previous year. Flights delayed >30 minutes from all-causes increased from 8.8% to 9.0%.

All Causes Arrival Punctuality - February 2025

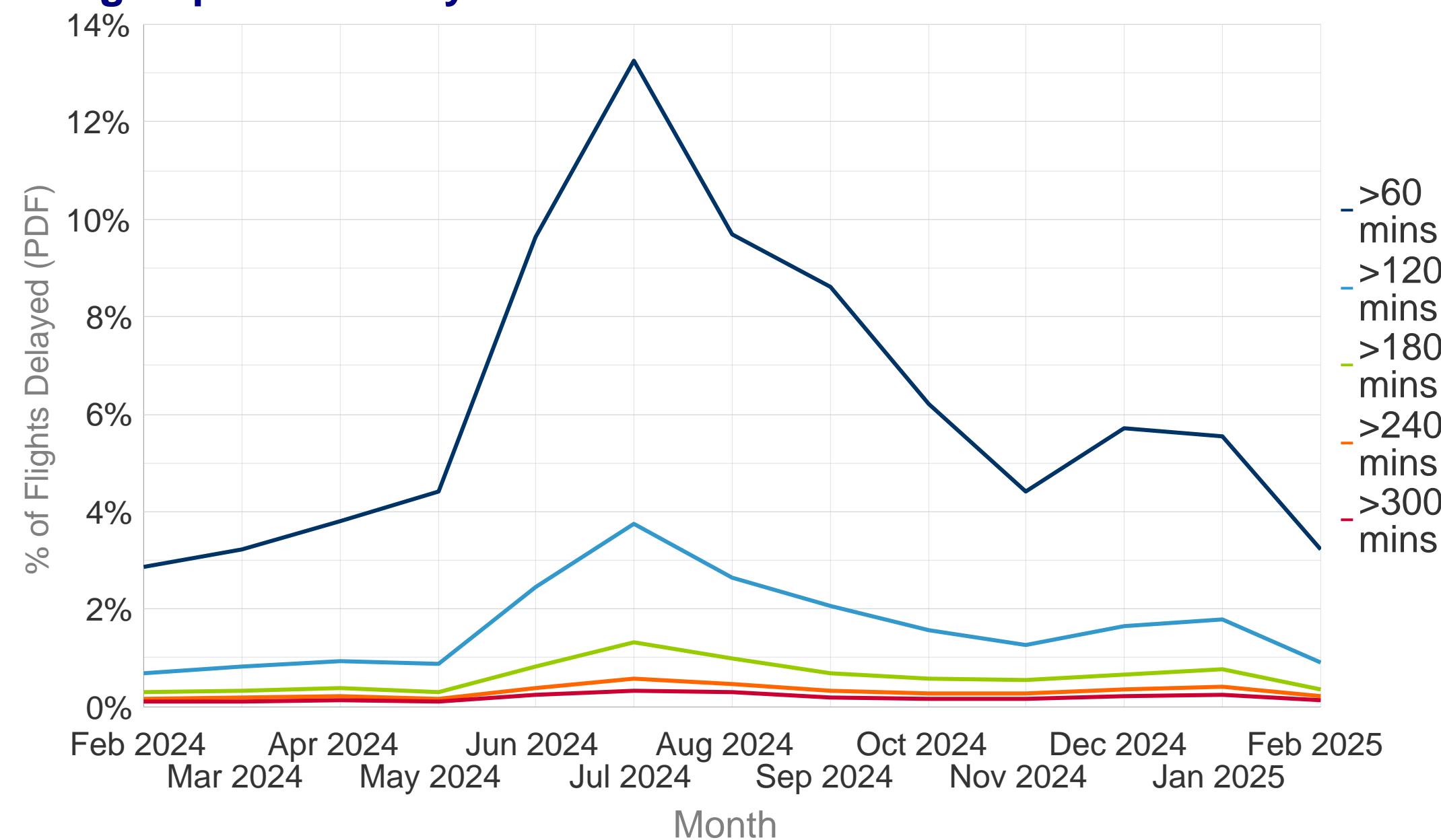


In February 2025, 22.7% of the flights arrived within the 5 minutes threshold before or after the scheduled arrival time (STA); a decrease of 1.1 points from 23.9% compared to previous year. Flights delayed >30 minutes from all-causes increased from 8.3% to 8.4%.

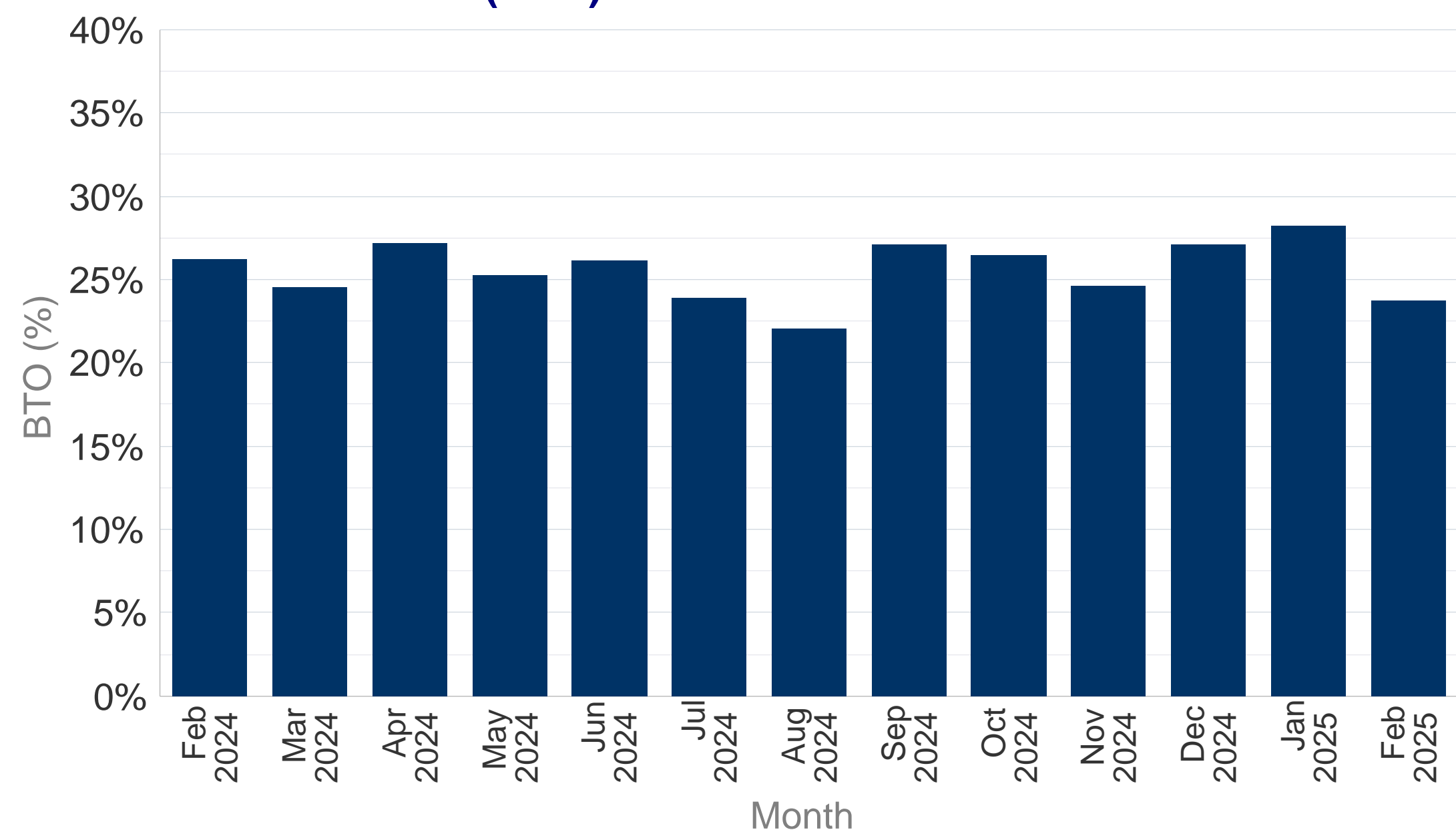
Average daily flights for ECAC. All flows



Long Departure Delays All-Causes



Block Time Overshoot (BTO)



Delay Difference Indicator - Flight (DDI-F)

