

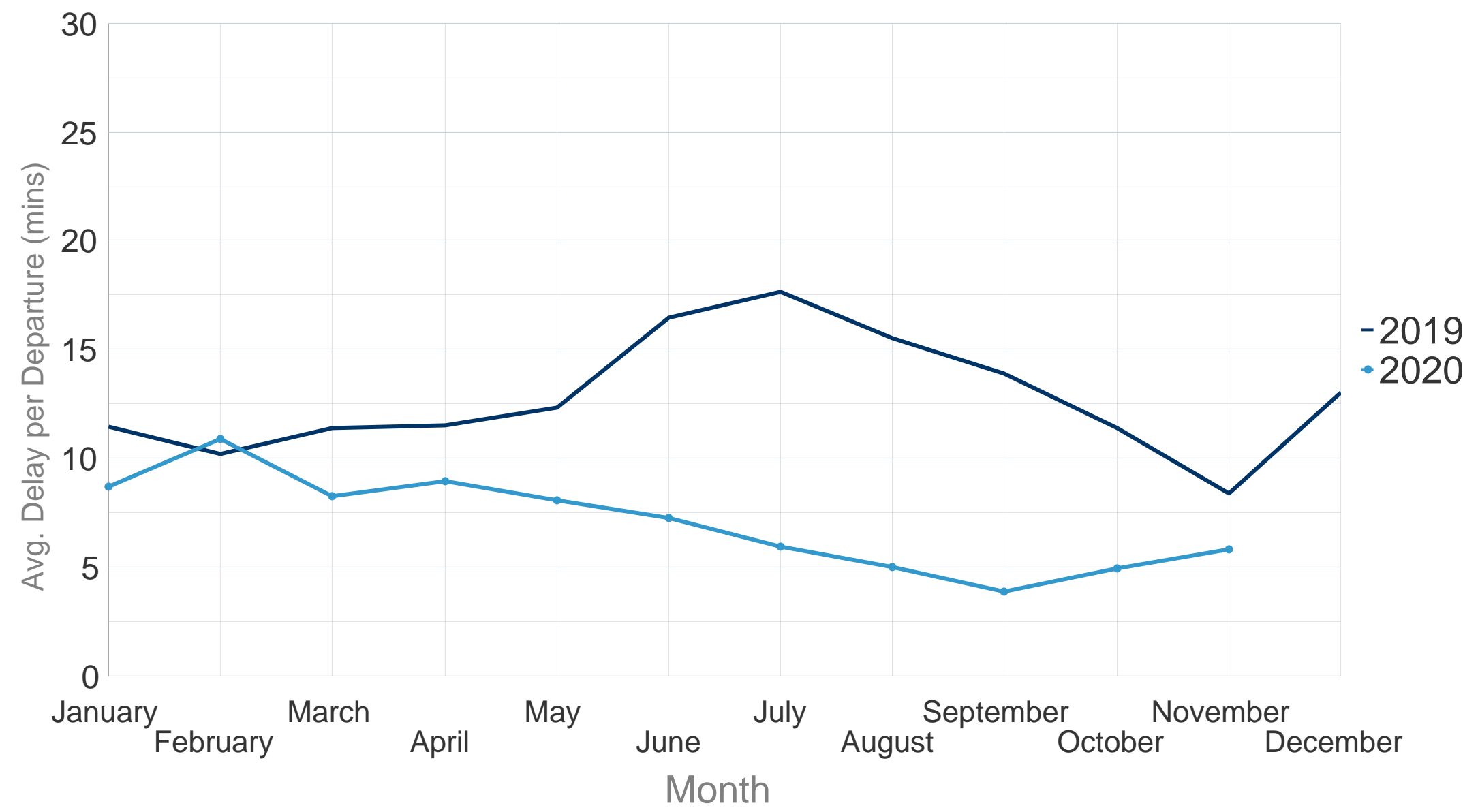
All-Causes Delay to Air Transport in Europe



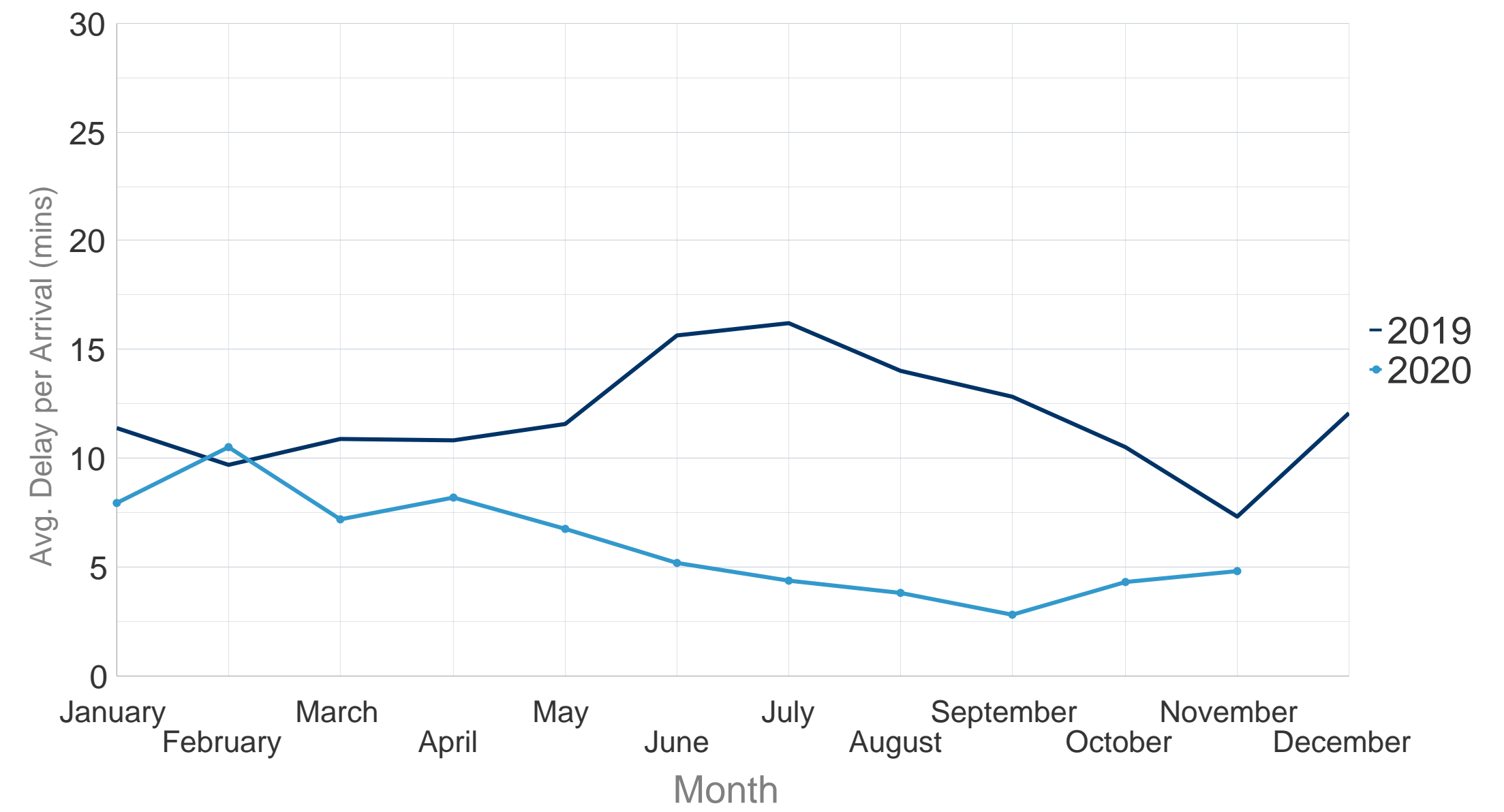
November 2020

Network traffic fell by 61.6% in November 2020 (compared to November 2019) due to the effect of the COVID-19 pandemic. Turkish Airlines was the busiest carrier, followed by Ryanair and KLM. Amsterdam Schiphol was the busiest airport followed by IGA Istanbul airport, Frankfurt Main, Istanbul Sabiha Gokcen and Paris Charles de Gaulle.

Average Delay per Flight on Departure (mins) - November 2020



Average Delay per Flight on Arrival (mins) - November 2020

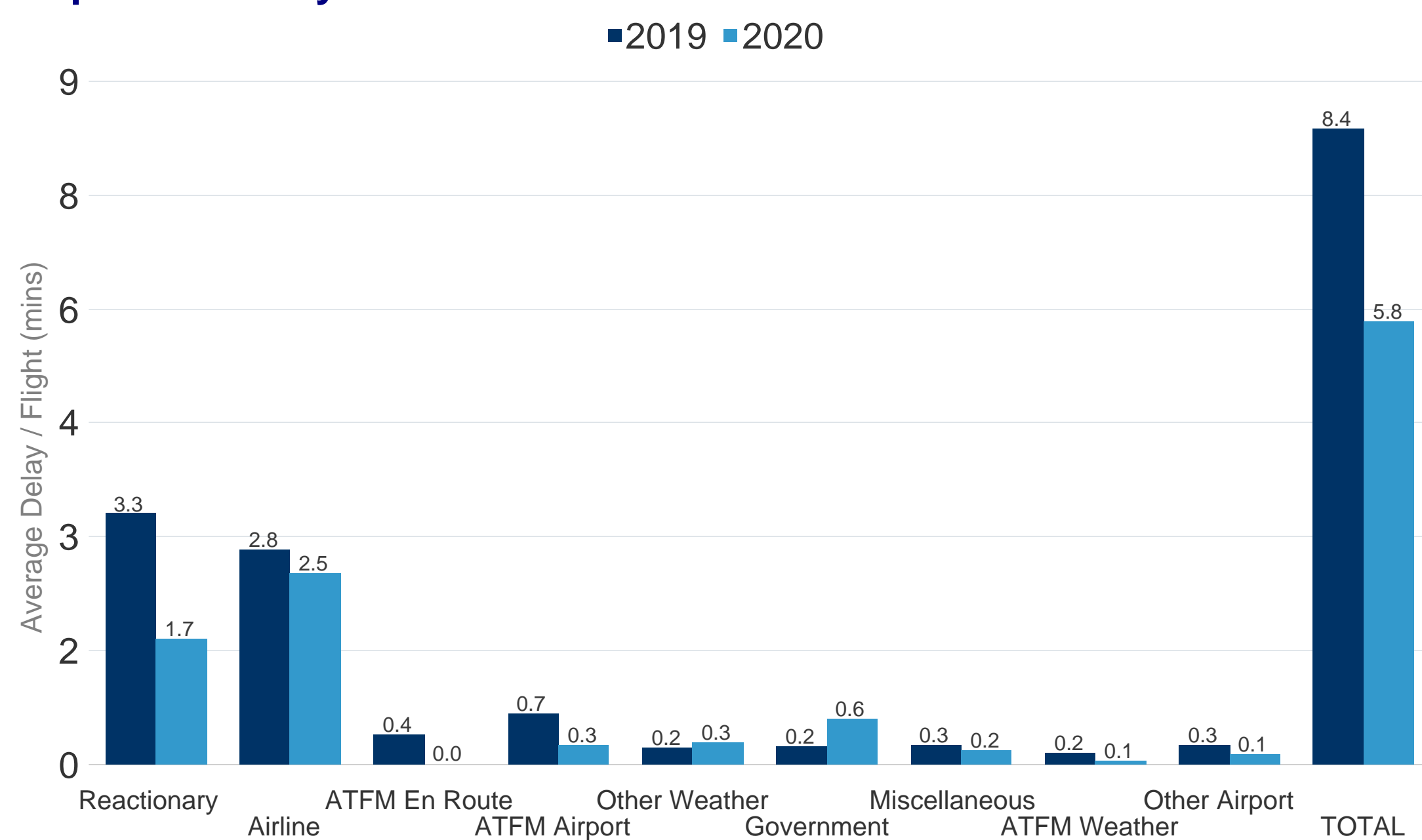


In November 2020 the average delay per flight on departure was 5.8 minutes per flight. This was a **decrease** of 2.6 minutes per flight when compared to November 2019 where the average delay per flight was 8.4 minutes.

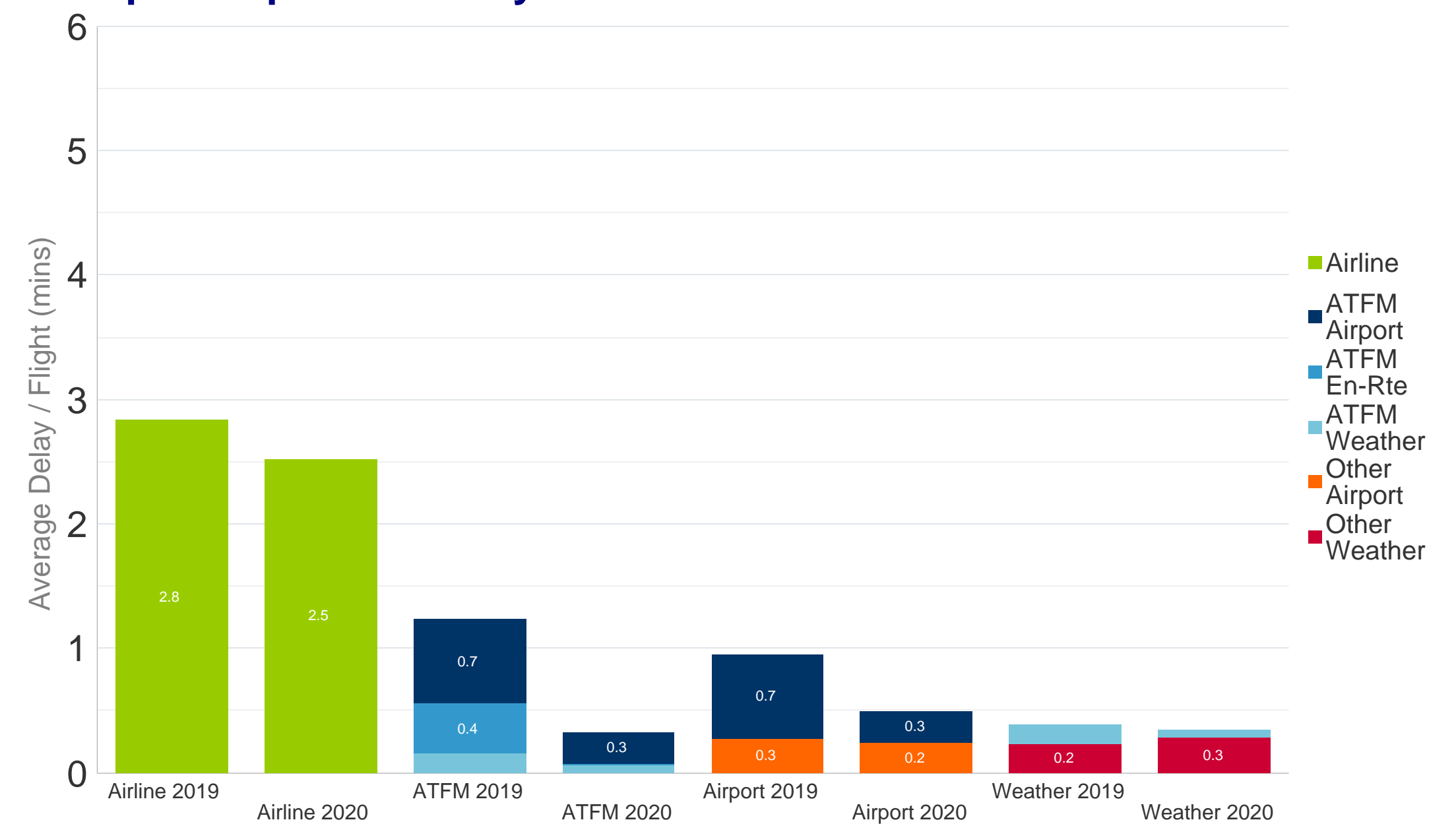
Further analysis of the delay causes shows that reactionary delay contributed 1.7 minutes to the average delay per flight in November 2020.

In November 2020 the average delay per flight on arrival was 4.8 minutes per flight. This was a **decrease** of 2.5 minutes per flight when compared to November 2019 where the average delay per flight was 7.3 minutes.

Departure Delay Causes - November 2020



Grouped Departure Delay Causes - November 2020



The First Look at Delays is based on partial airline data to be updated once the full dataset is available.
Current CODA Coverage of IFR Flights in ECAC November 2020: 34.7%
Date of publication: 22/12/2020 Eurocontrol TLP status: White (Public Information)

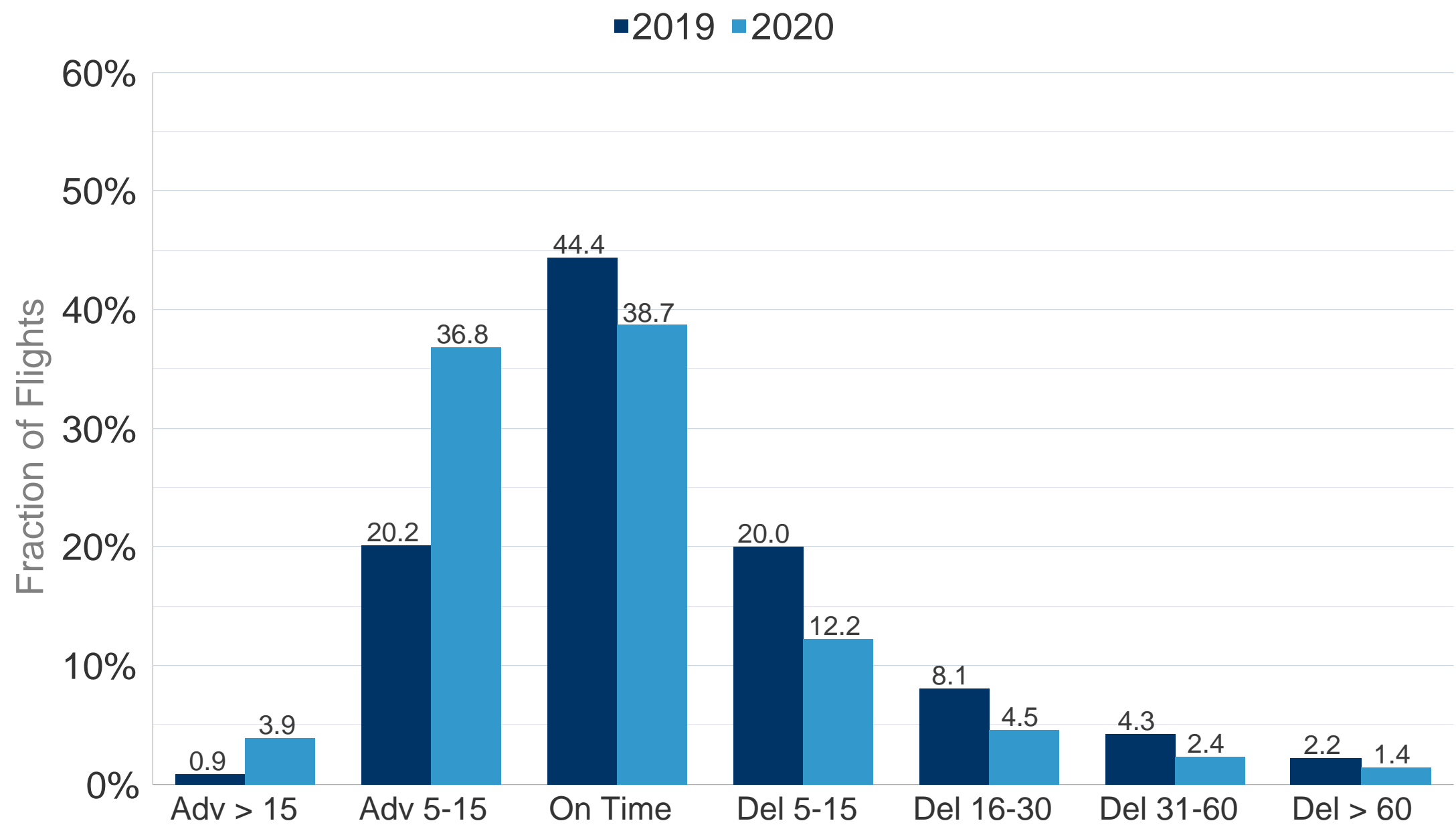
SUPPORTING EUROPEAN AVIATION



NETWORK
MANAGER

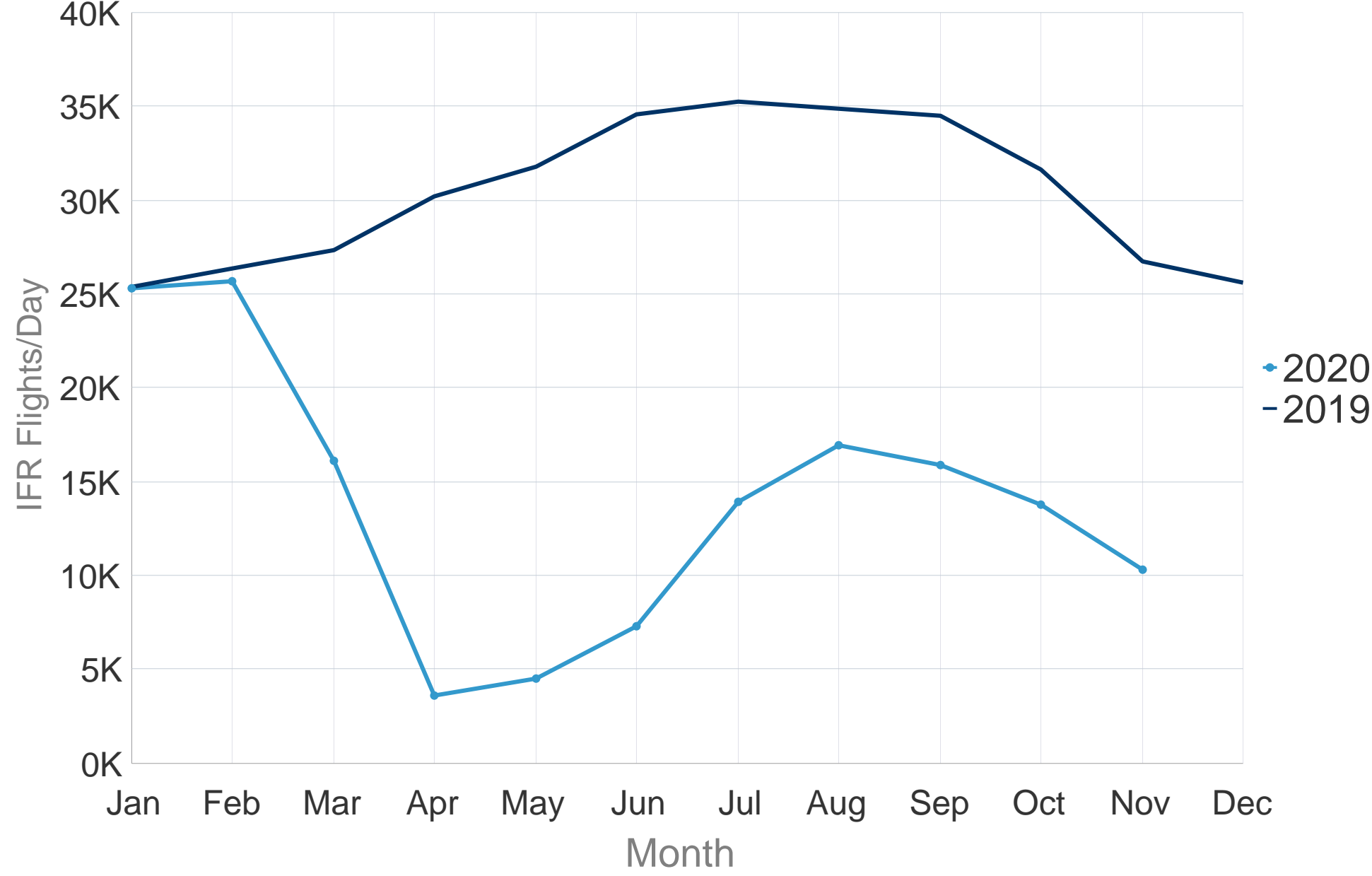


All Causes Departure Punctuality - November 2020

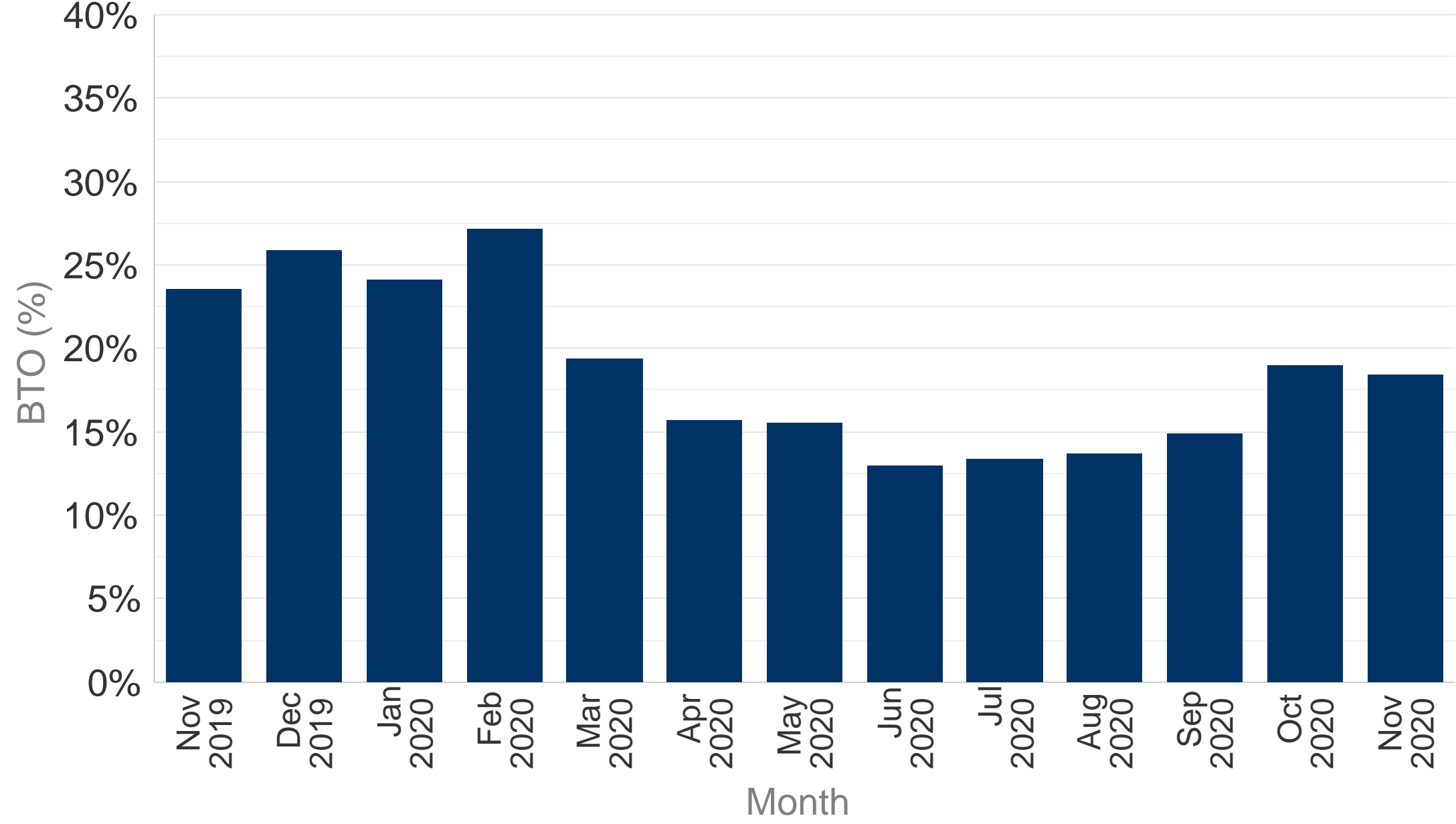


In November 2020, 38.7% of the flights departed within the 5 minutes threshold before or after the scheduled departure time (STD); **a decrease** of 5.7 points from 44.4% compared to previous year. Flights delayed >30 minutes from all-causes **decreased** from 6.5% to 3.8%.

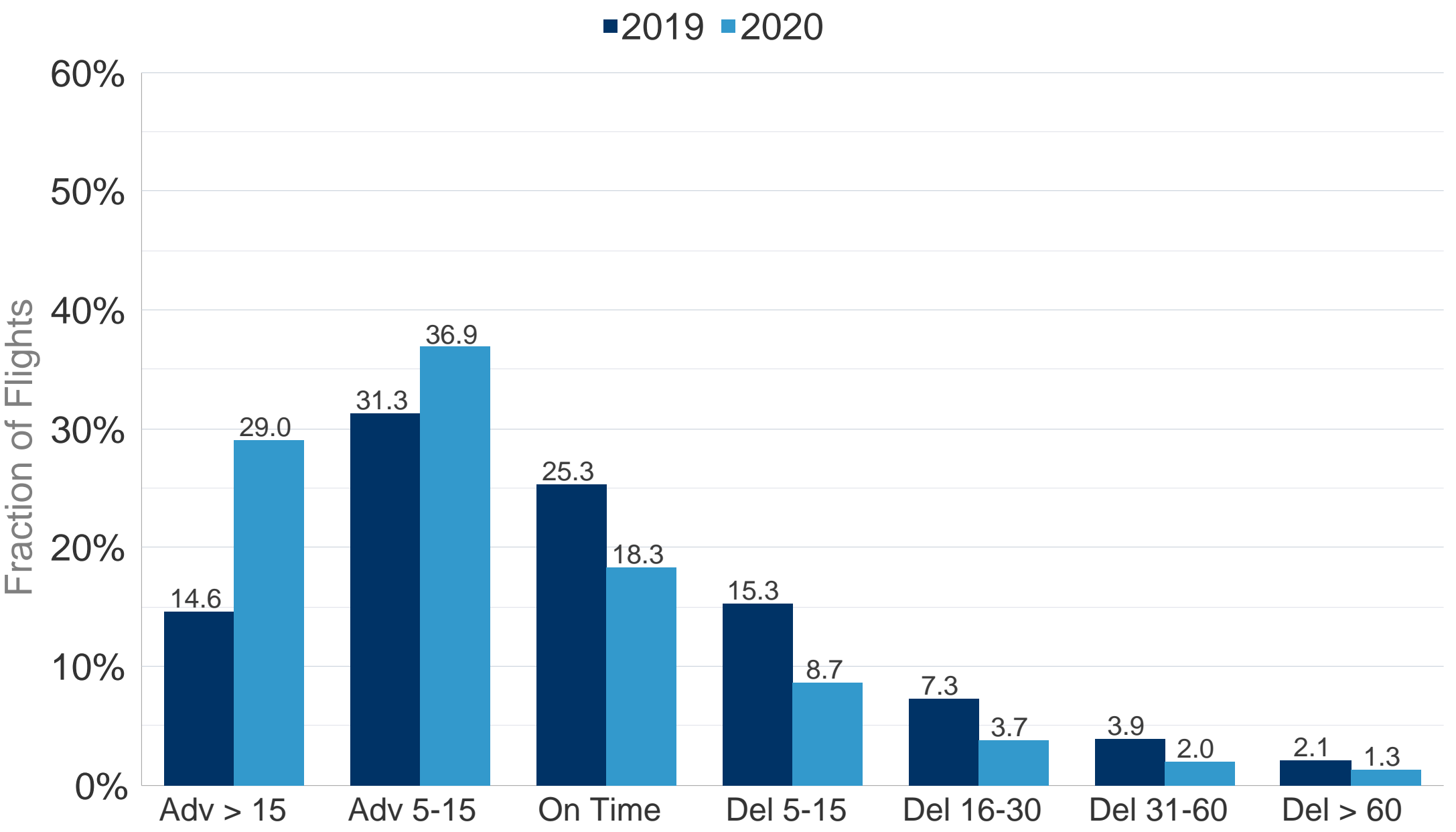
Average daily flights for ECAC. All flows



Block Time Overshoot (BTO)

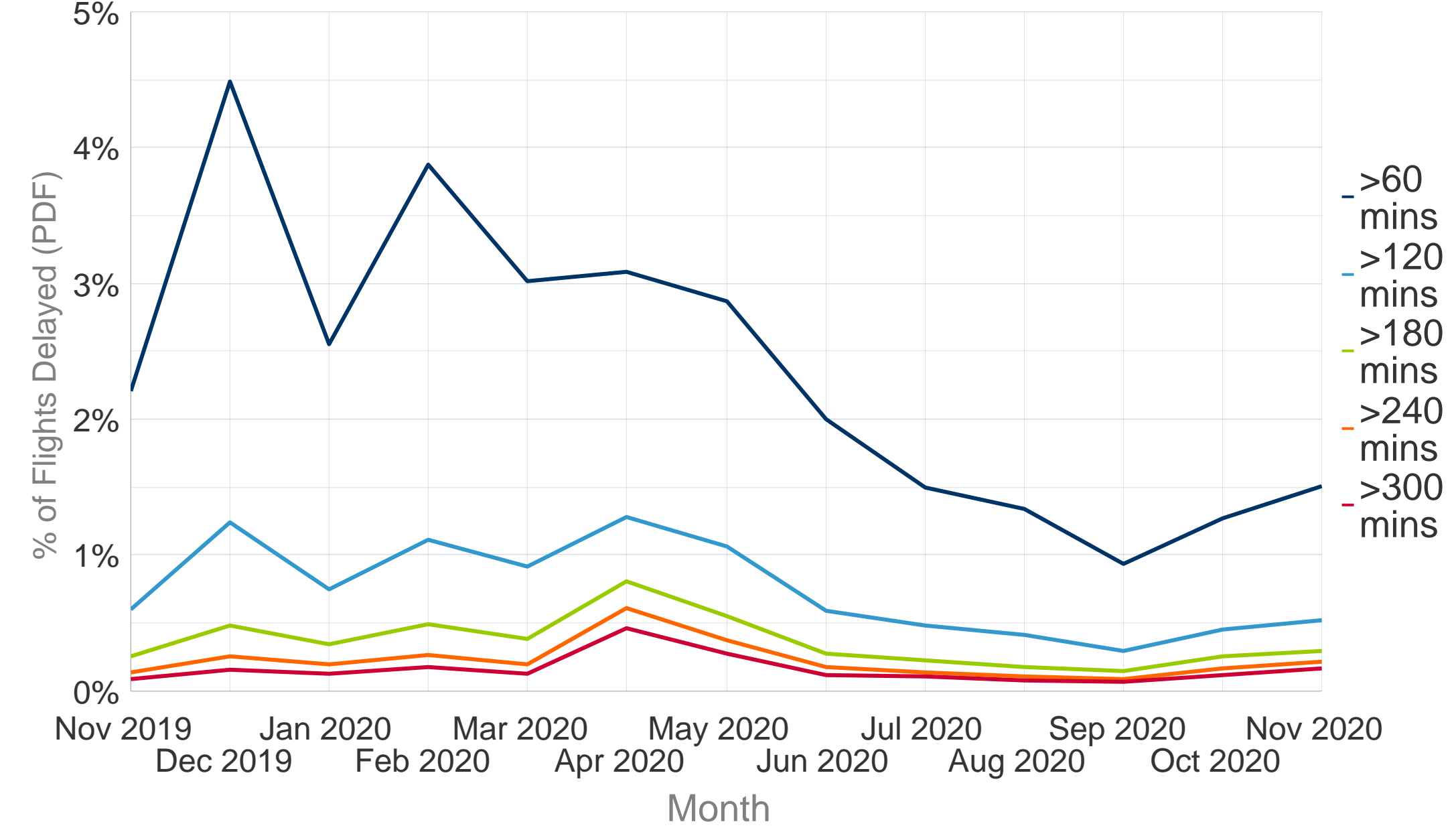


All Causes Arrival Punctuality - November 2020



In November 2020, 18.3% of the flights arrived within the 5 minutes threshold before or after the scheduled arrival time (STA); **a decrease** of 7.0 points from 25.3% compared to previous year. Flights delayed >30 minutes from all-causes **decreased** from 6.0% to 3.3%.

Long Departure Delays All-Causes



Delay Difference Indicator - Flight (DDI-F)

