

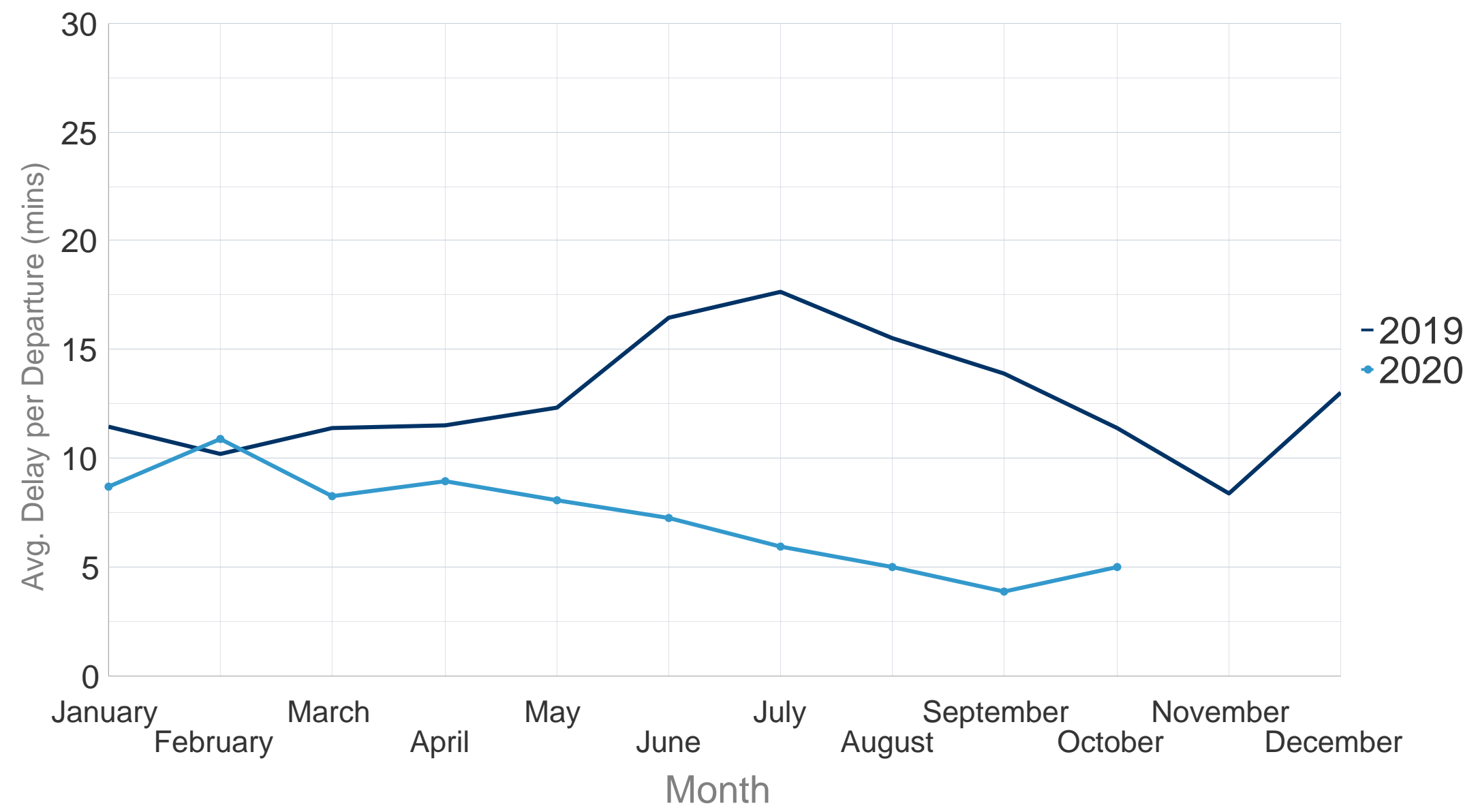
# All-Causes Delay to Air Transport in Europe



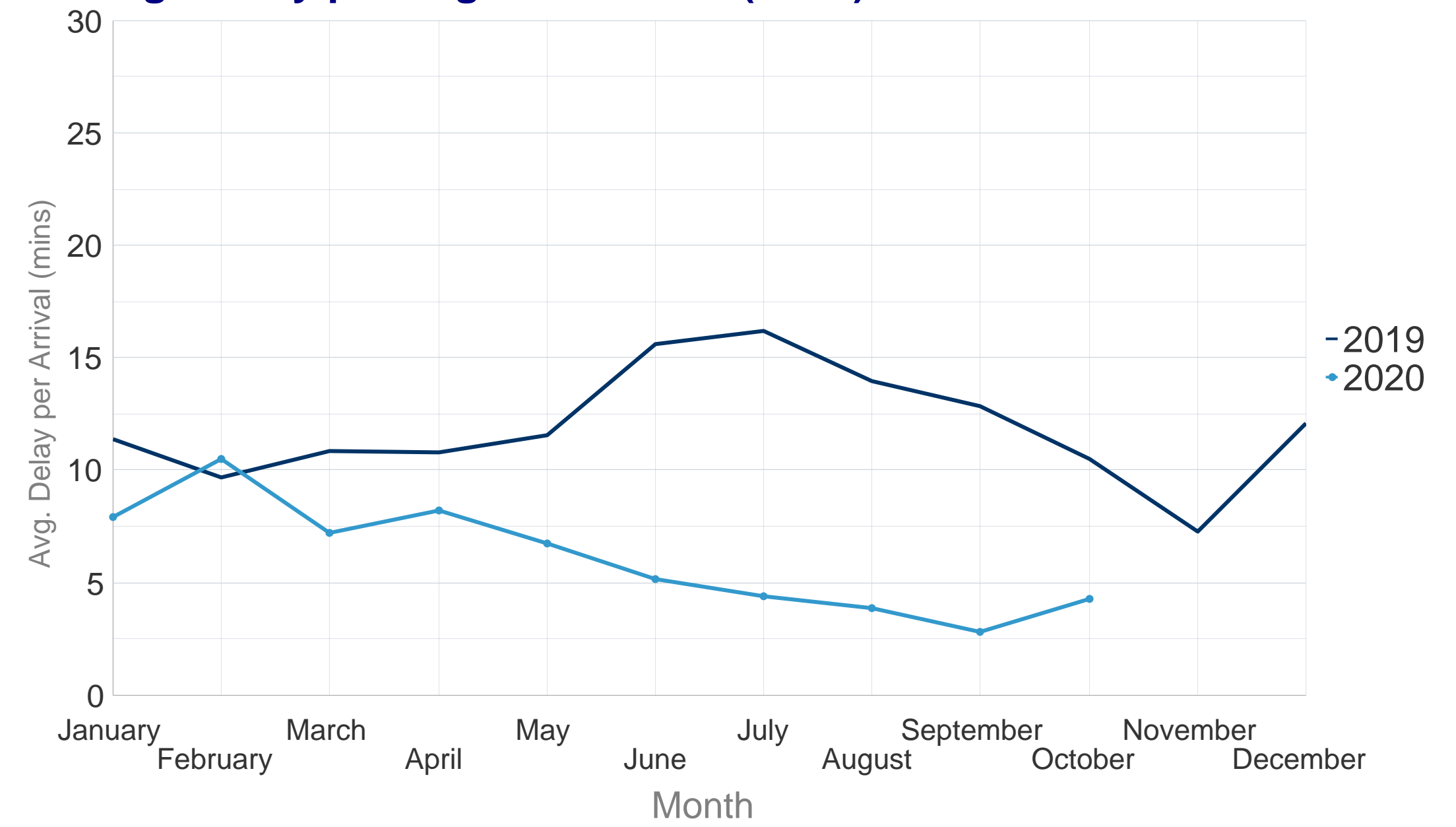
## October 2020

Network traffic fell by 56.4% in October 2020 (compared to October 2019) due to the effect of the COVID-19 pandemic. Amsterdam Schiphol was the busiest airport, followed by London Heathrow, Frankfurt Main, Paris Charles de Gaulle, and Istanbul airport. Ryanair was the busiest carrier, followed by Turkish Airlines, Air France and Lufthansa.

## Average Delay per Flight on Departure (mins) - October 2020



## Average Delay per Flight on Arrival (mins) - October 2020

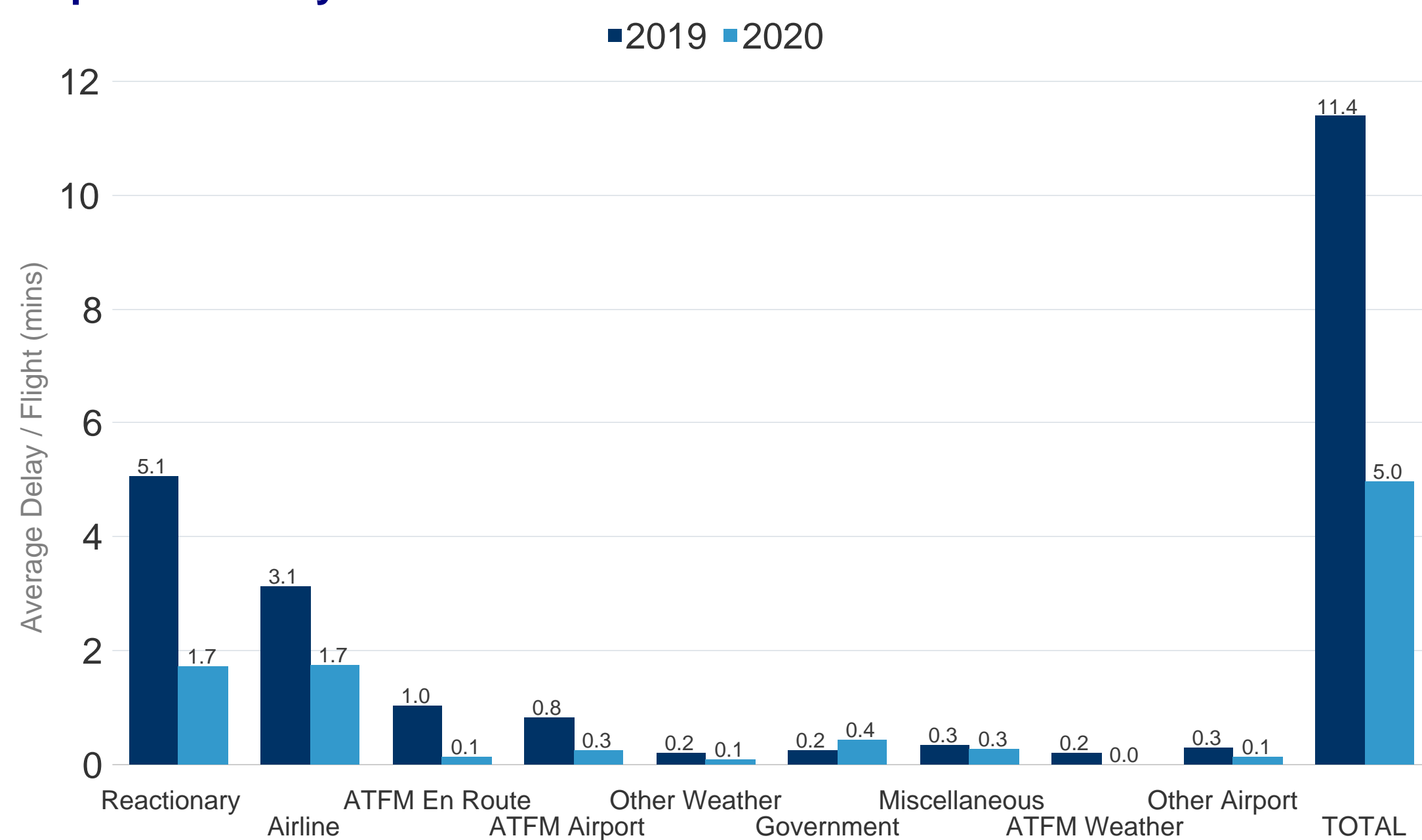


In October 2020 the average delay per flight on departure was 5.0 minutes per flight. This was a **decrease** of 6.6 minutes per flight when compared to October 2019 where the average delay per flight was 11.4 minutes.

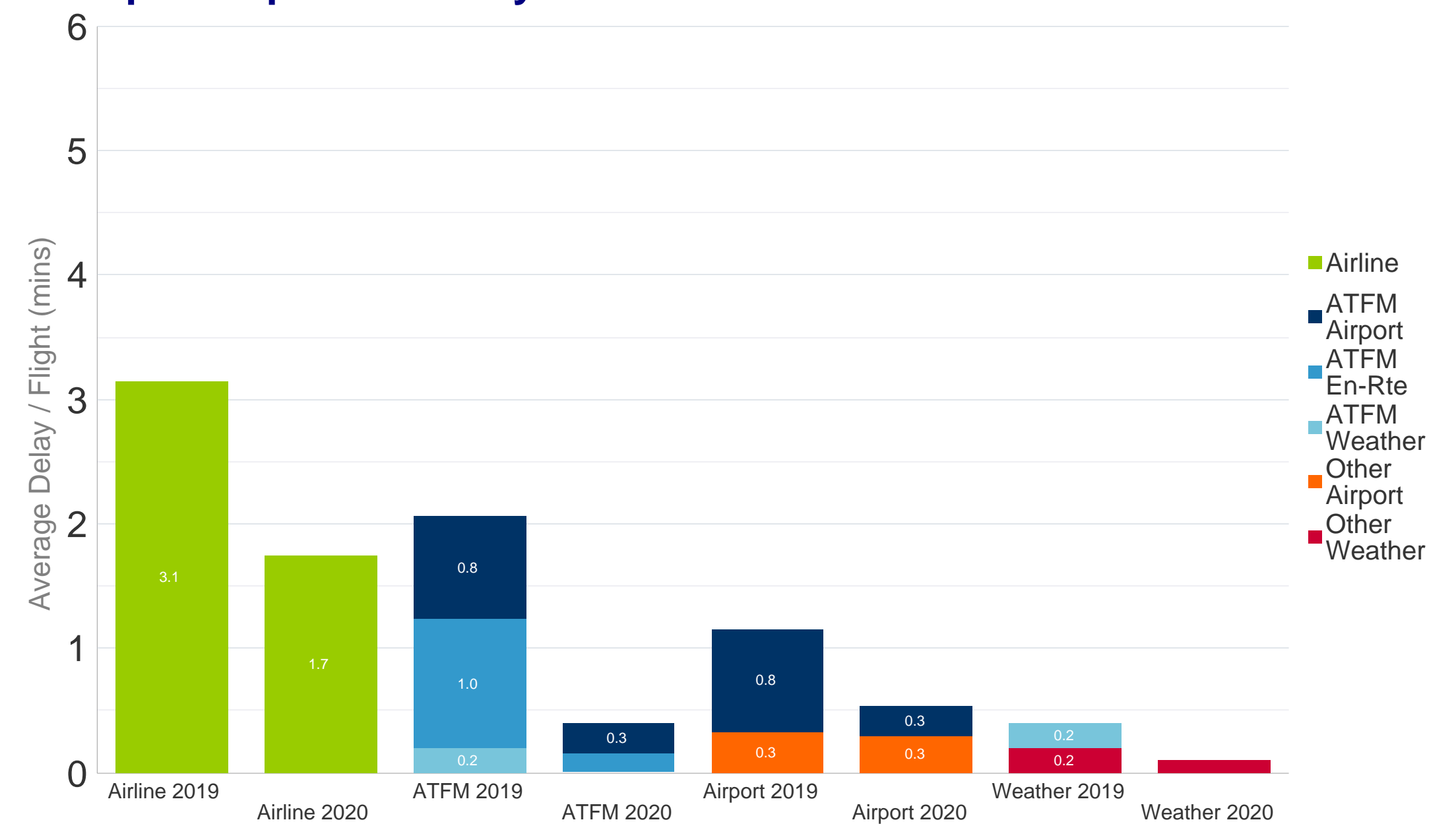
Further analysis of the delay causes shows that reactionary delay contributed 1.7 minutes to the average delay per flight in October 2020.

In October 2020 the average delay per flight on arrival was 4.3 minutes per flight. This was a **decrease** of 6.2 minutes per flight when compared to October 2019 where the average delay per flight was 10.5 minutes.

## Departure Delay Causes - October 2020



## Grouped Departure Delay Causes - October 2020

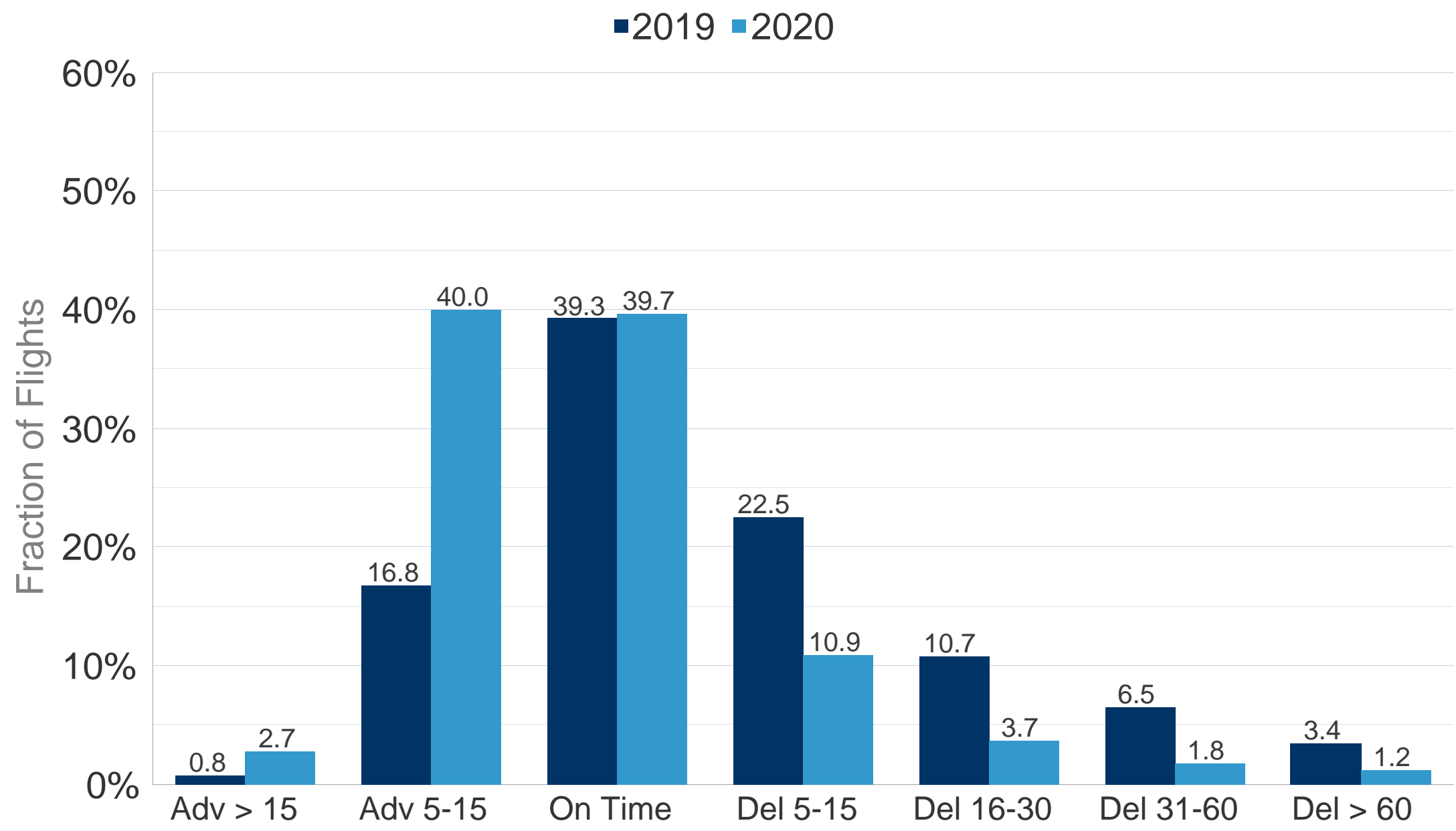


The First Look at Delays is based on partial airline data to be updated once the full dataset is available.  
Current CODA Coverage of IFR Flights in ECAC October 2020: 52.7%  
Date of publication: 23/11/2020 Eurocontrol TLP status: White (Public Information)

SUPPORTING EUROPEAN AVIATION

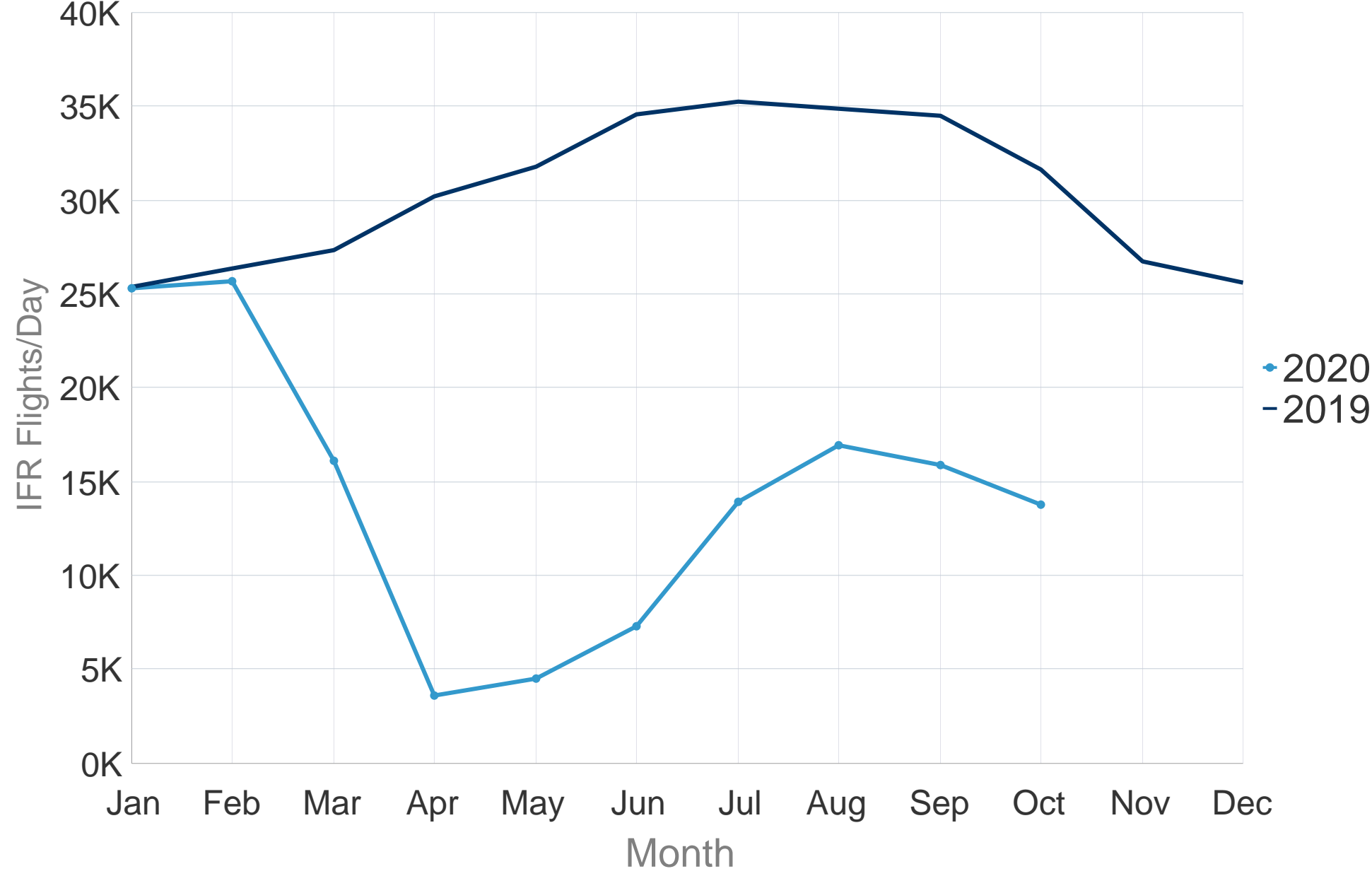


All Causes Departure Punctuality - October 2020

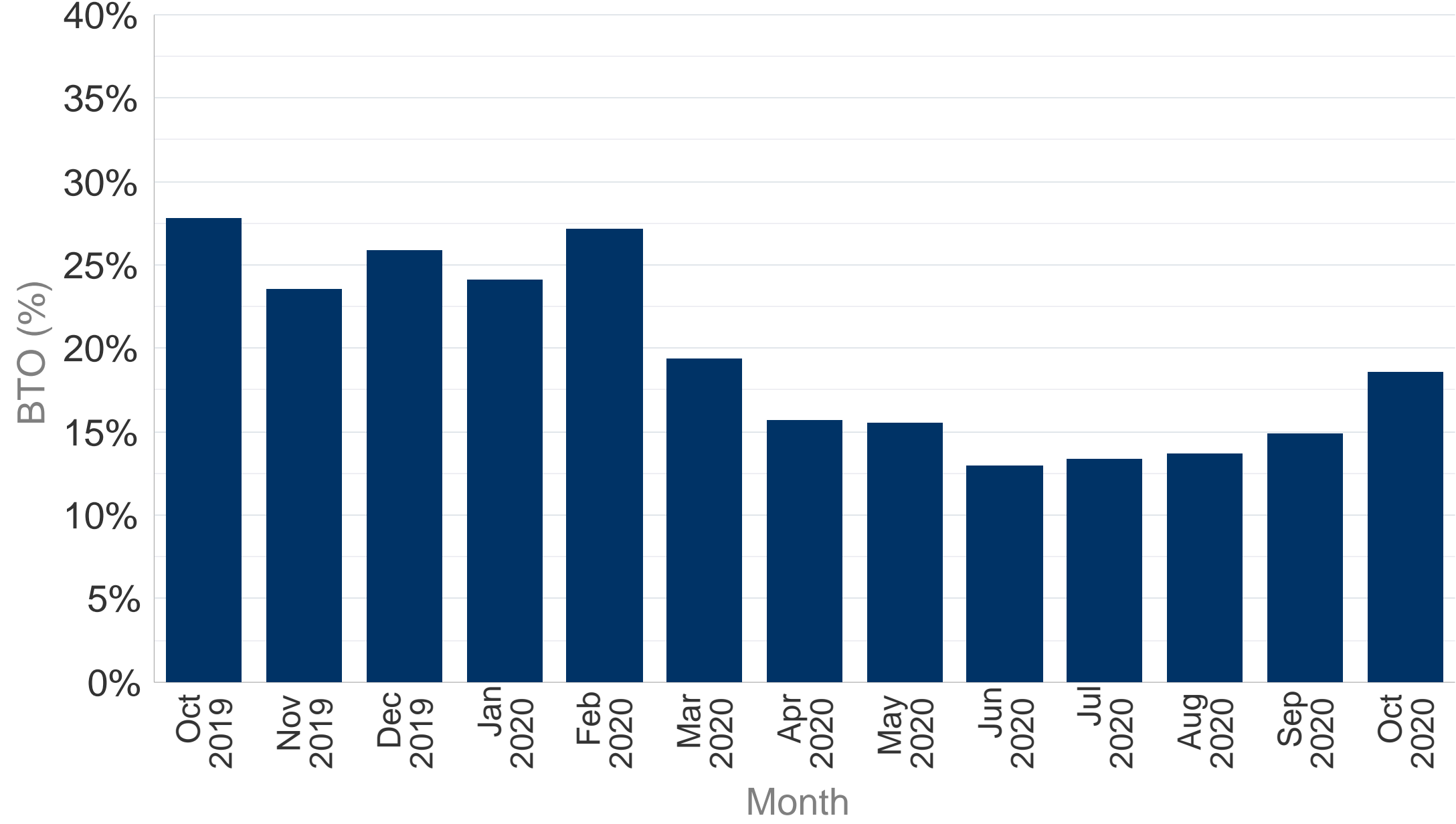


In October 2020, 39.7% of the flights departed within the 5 minutes threshold before or after the scheduled departure time (STD); **an increase** of 0.4 points from 39.3% compared to previous year. Flights delayed >30 minutes from all-causes **decreased** from 9.9% to 3.0%.

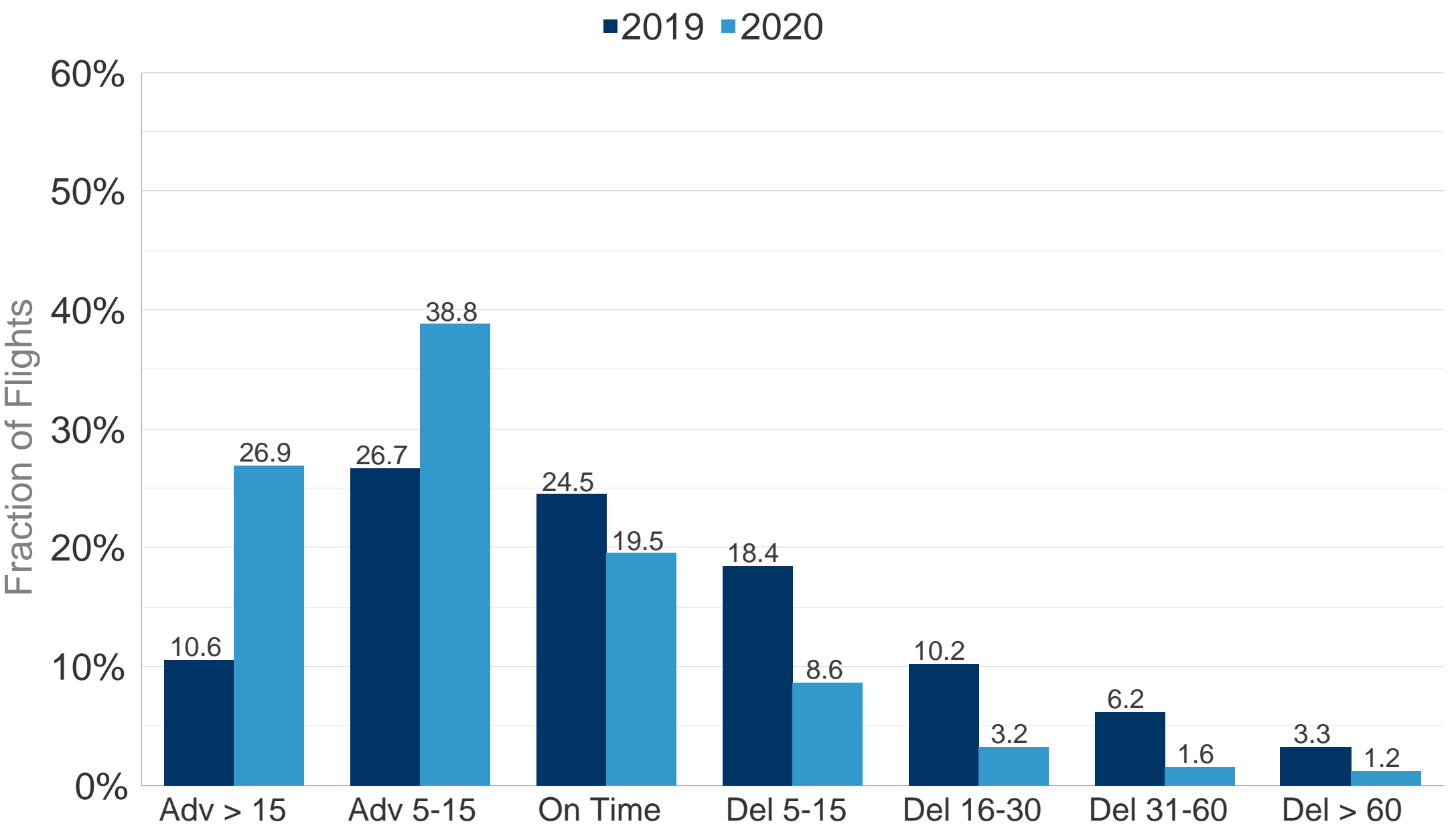
Average daily flights for ECAC. All flows



Block Time Overshoot (BTO)

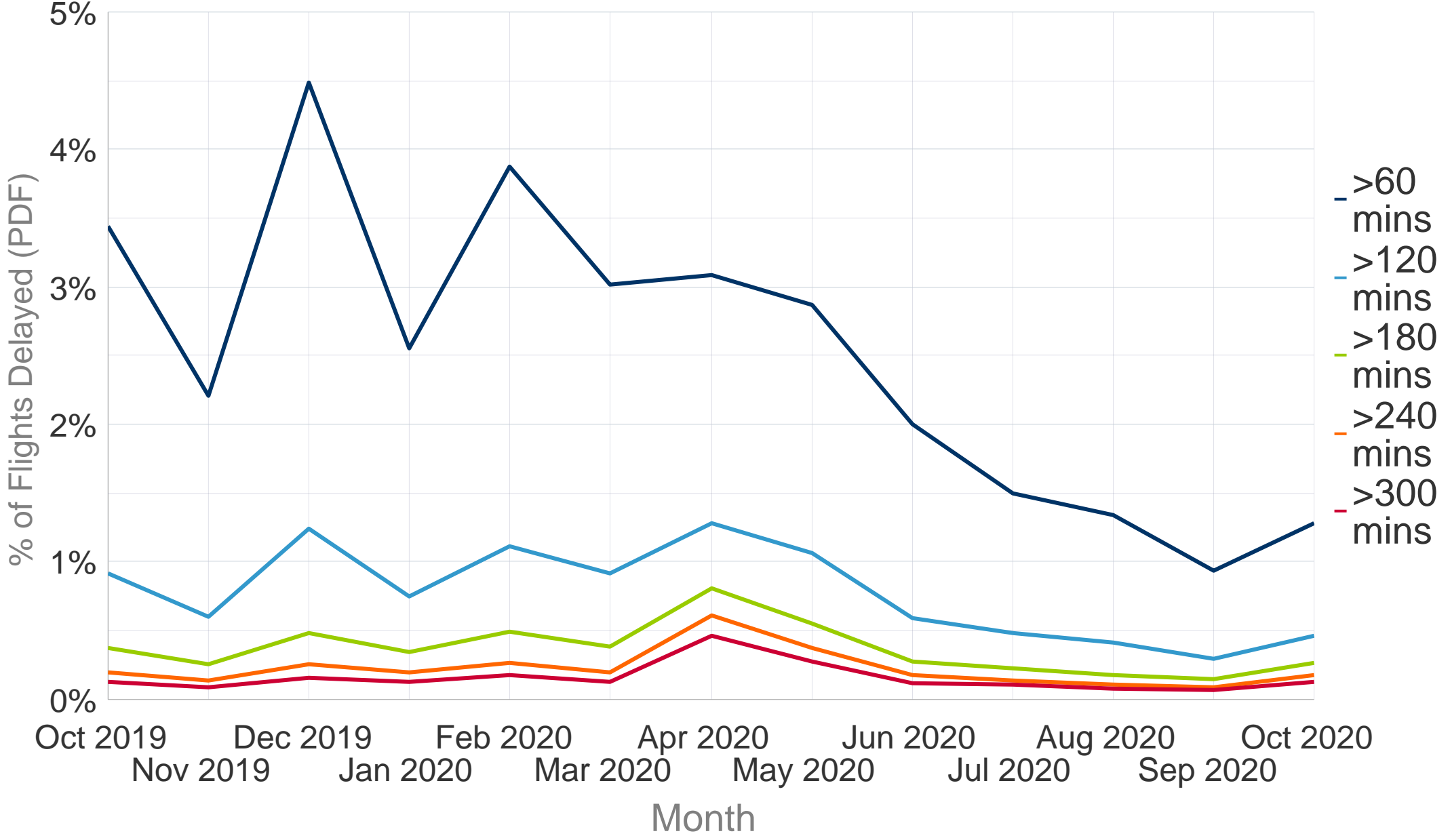


All Causes Arrival Punctuality - October 2020



In October 2020, 19.5% of the flights arrived within the 5 minutes threshold before or after the scheduled arrival time (STA); **a decrease** of 5.0 points from 24.5% compared to previous year. Flights delayed >30 minutes from all-causes **decreased** from 9.4% to 2.8%.

Long Departure Delays All-Causes



Delay Difference Indicator - Flight (DDI-F)

