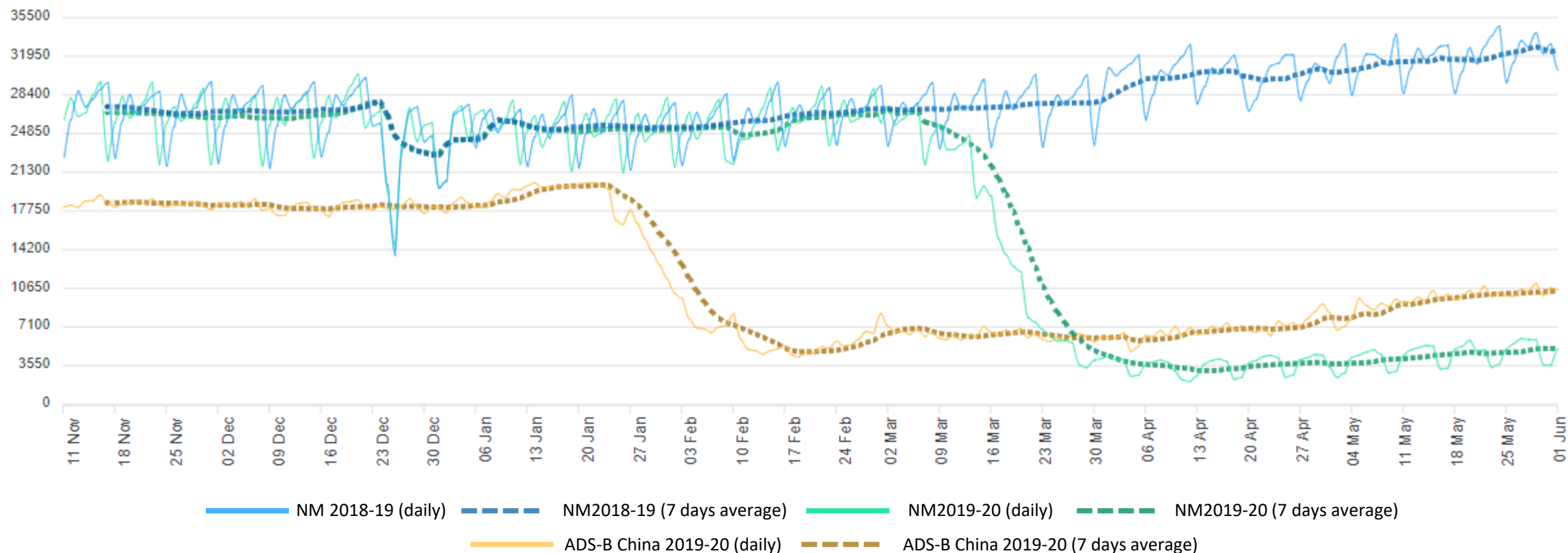


Traffic Summary: China and Singapore

Updated 1st June 2020

Traffic comparison: All NM flights vs All China flights

NM Traffic vs ADS-B monitored flights in China

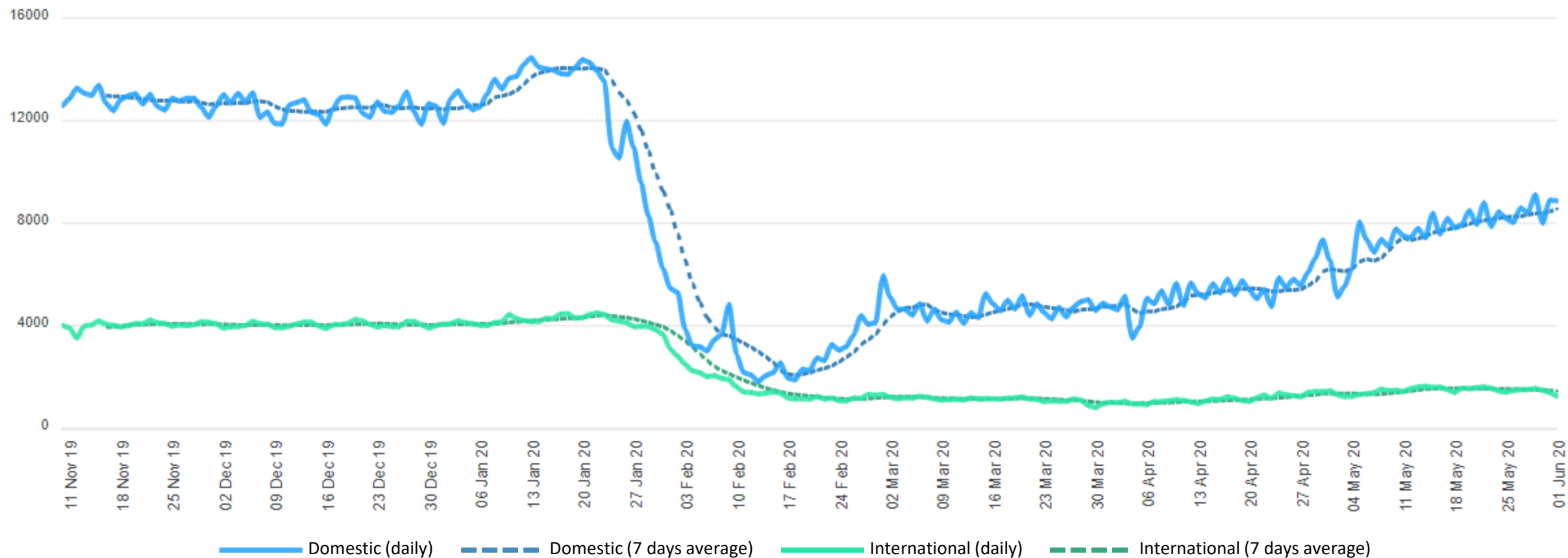


ADS-B data supplied by Aireon

Data update: 01-Jun-2020

CHINA airspace: Domestic and International flights

ADS-B monitored flights in China



ADS-B data supplied by Aireon

Data update: 01-Jun-2020



Chinese domestic traffic now at between **65-70%** of normal levels,
International traffic at **35%**



Since the May Day holiday ended on May 5th Chinese domestic air traffic has shown **strong growth**.



Load factors up to maximum of 75% (limited by Chinese Government). >66% reported.



Domestic growth expected to **continue steadily**: Chinese government actively encouraging business travel.



Reported that **China Eastern Airlines** is operating 1,500 flights per day now, 70% of pre pandemic level- large increase in cargo operations year on year.



International growth remains weak: New schedule from June 1st- CAAC actively trying to increase traffic- some charters commencing (e.g. DLH).

Three airports currently monitored

Shanghai Pudong



- Strong domestic growth since May holiday, slight reduction in International flights.
- Domestic traffic at 65%, international at 50% of normal levels.

Shenzen Baoan



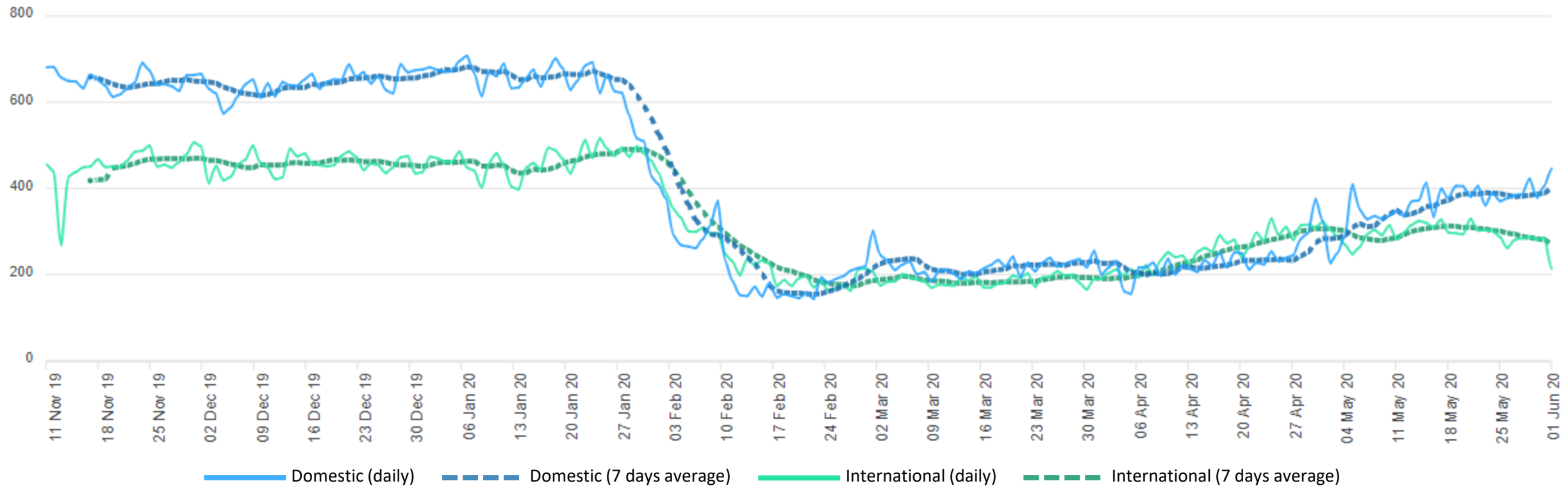
- Steady domestic growth from the low point. International traffic small proportion of total, no significant growth since beginning of May.
- Domestic traffic at 80%, International at 30% of normal levels.

Wuhan Tianhe



- Steady but slow growth since the beginning of May. Slight increase at the end of May
- Domestic traffic at 25-30%, international at 30% of normal levels but low volume.

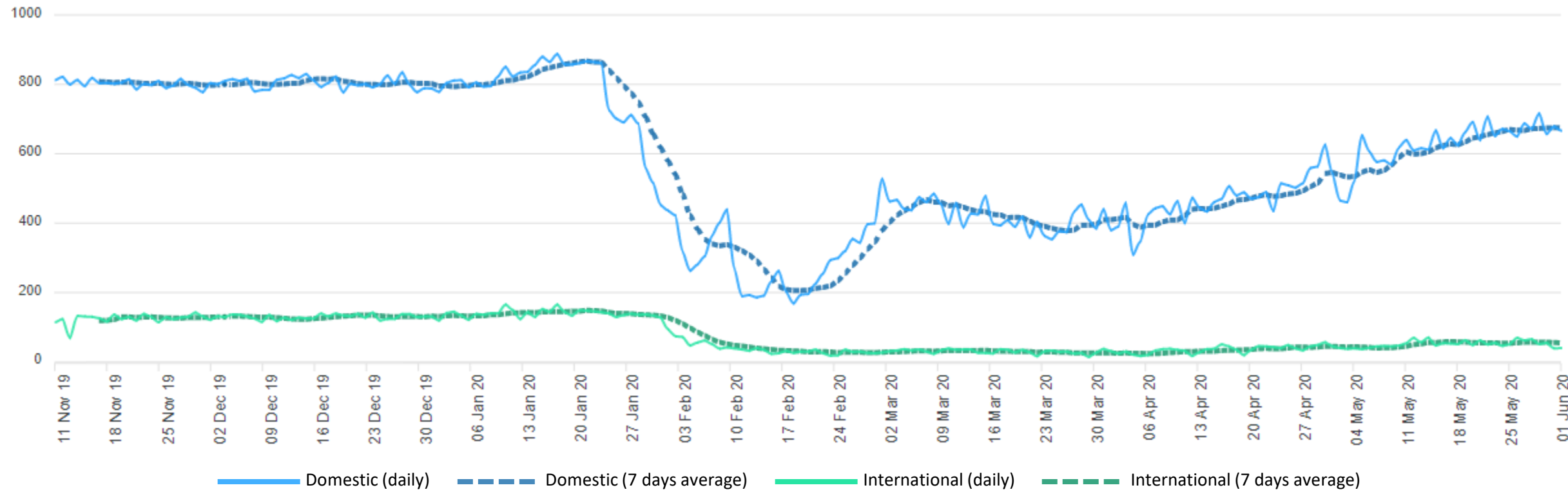
ADS-B monitored flights in Shanghai Pudong Airport



ADS-B data supplied by Aireon

Data update: 01-Jun-2020

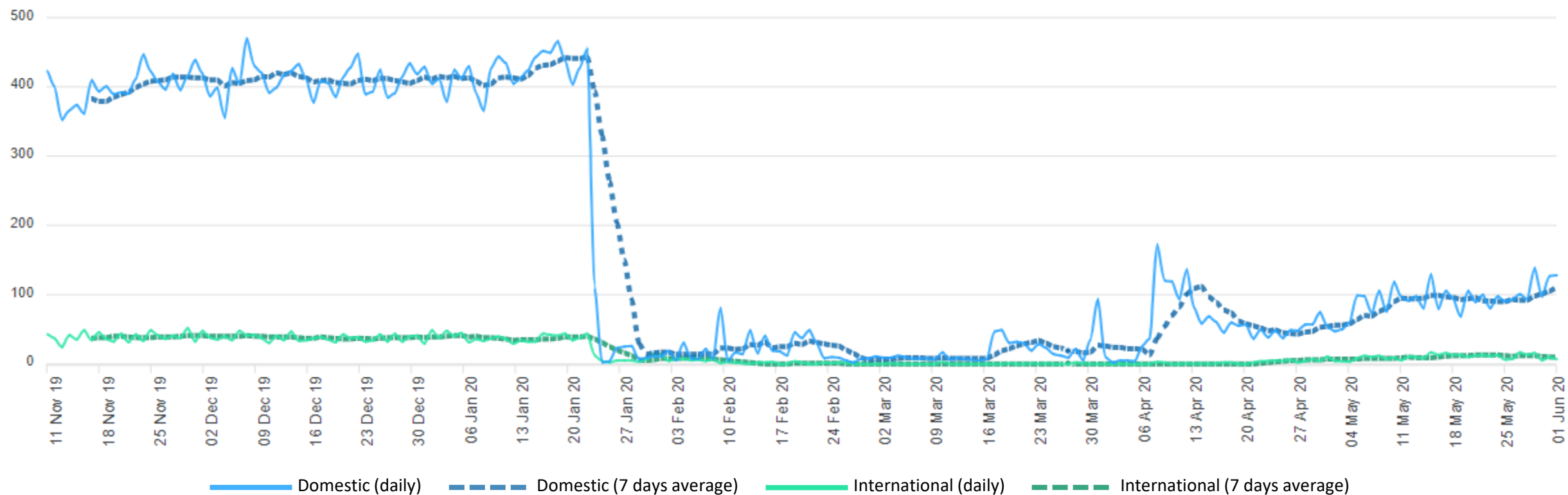
ADS-B monitored flights in Shenzhen Baoan Airport



ADS-B data supplied by Aireon

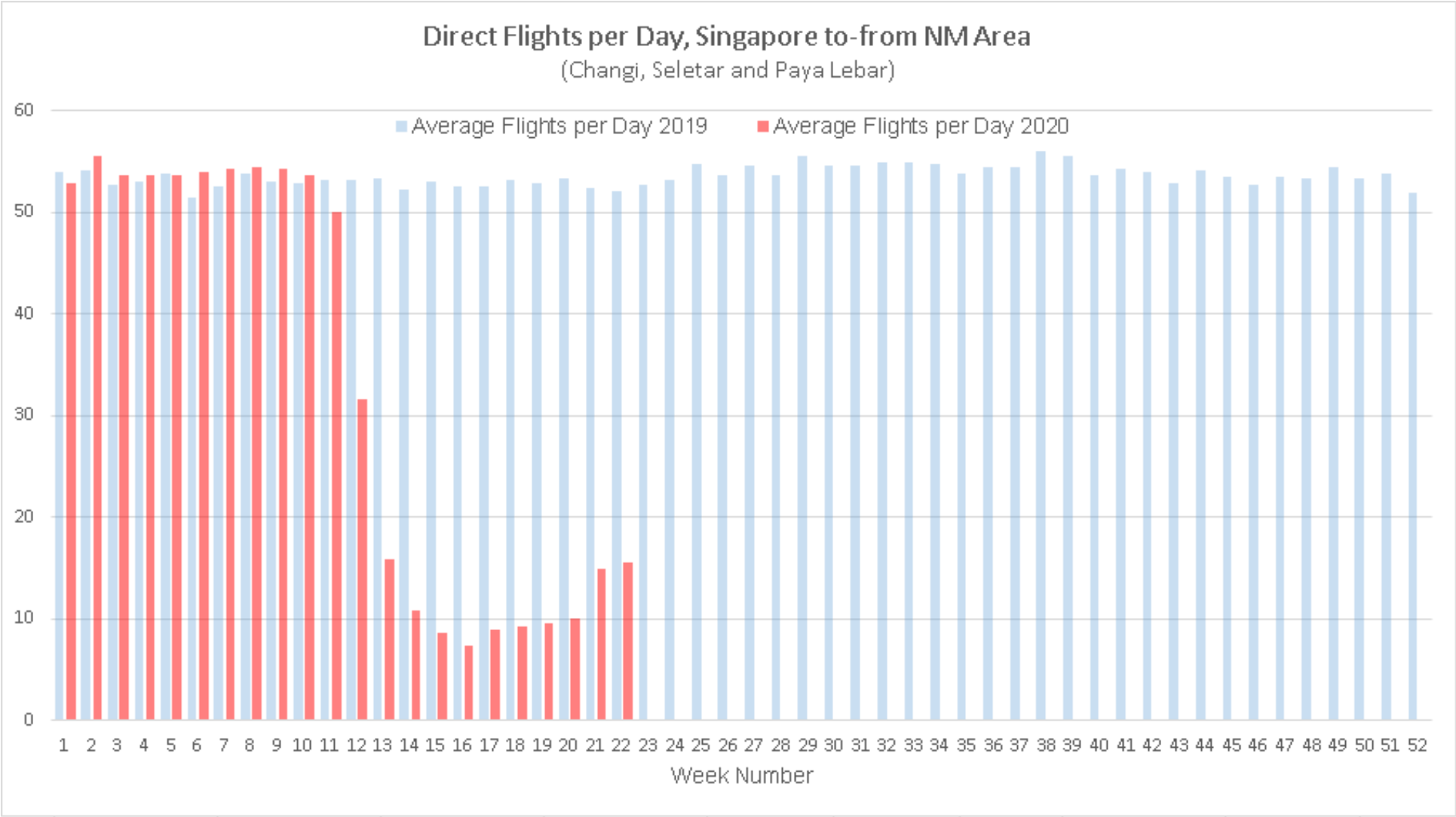
Data update: 01-Jun-2020

ADS-B monitored flights in Wuhan Tianhe Airport



ADS-B data supplied by Aireon

Data update: 01-Jun-2020



- ◆ Europe to Asia traffic is about **30% of normal levels**- almost all cargo traffic
- ◆ Singapore to/from Europe traffic levels showed a slight increase in the last two weeks.
- ◆ Traffic Singapore to/from Europe around 30% of 2019 levels
- ◆ Hong Kong and Singapore now accepting transit passengers.