

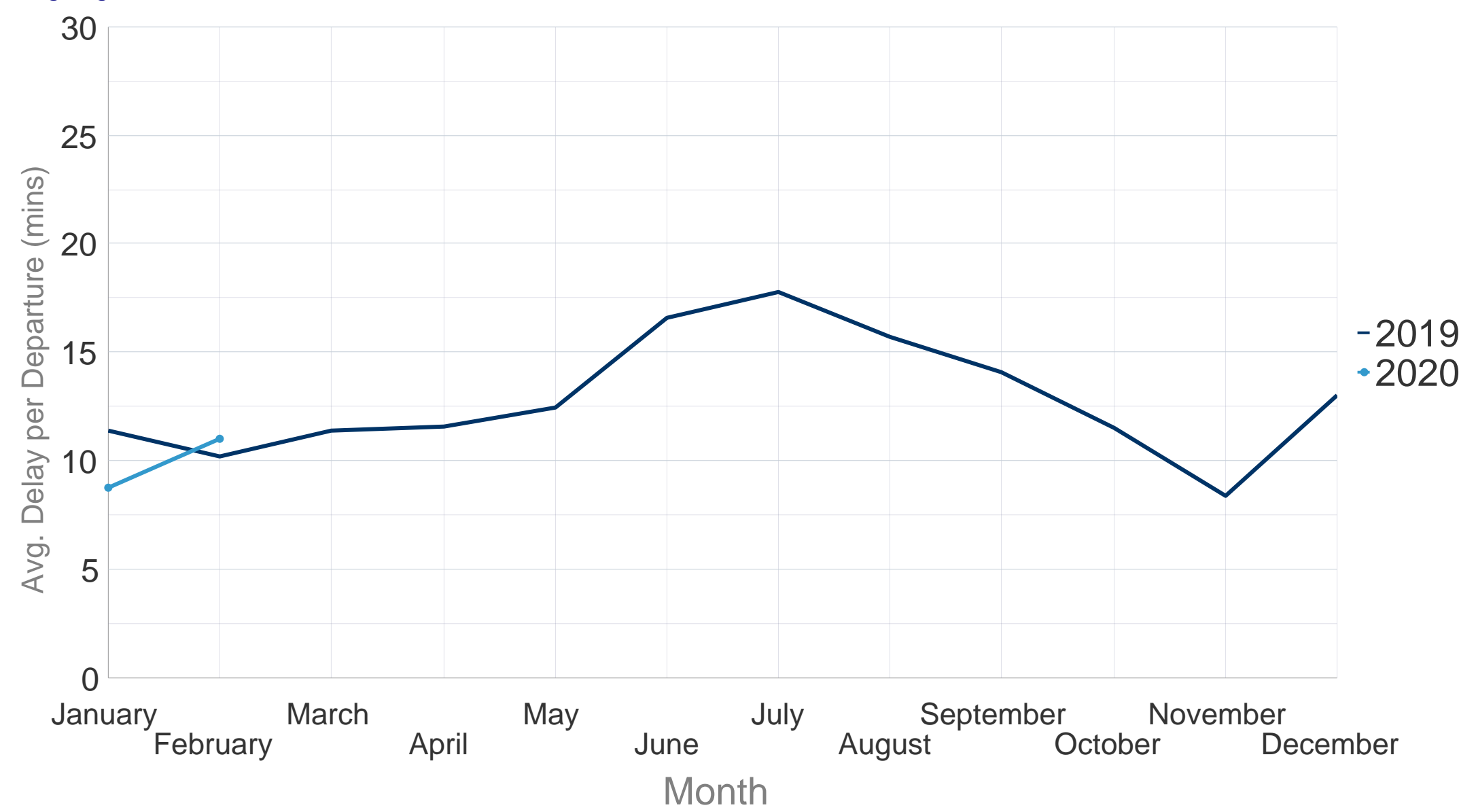
All-Causes Delay to Air Transport in Europe



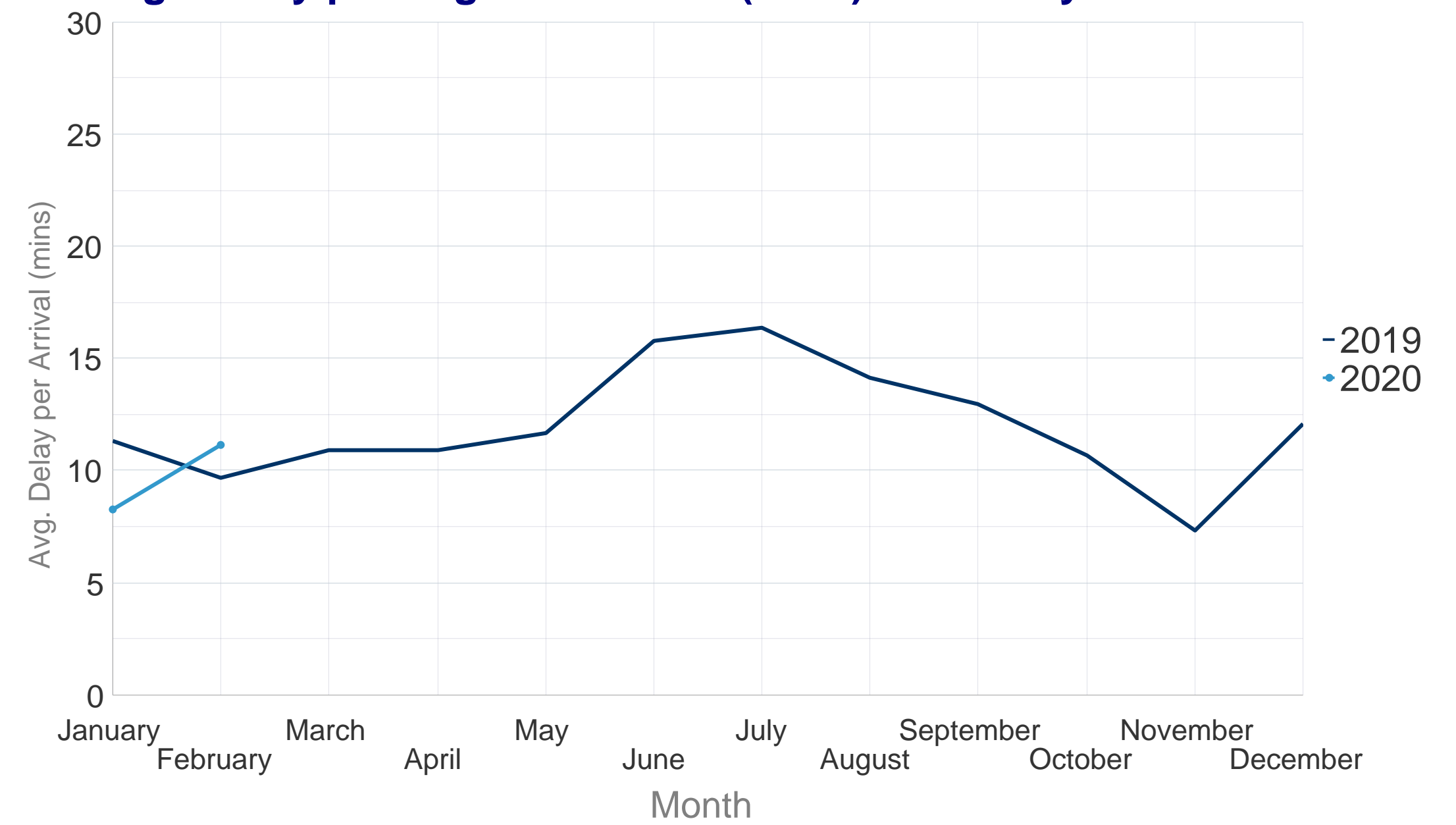
February 2020

In February, traffic for the month decreased by 2.6% compared to February 2019. French ATC industrial action (05-08 and 19-21 February) generated high delays in French ACCs such as Marseille, Brest, Paris, Reims and Bordeaux ACCs also impacting neighbouring states due to traffic on load. Weather conditions generated disturbance throughout the network. Snow impacted operations at Istanbul airports. Low visibility at London airports, strong winds and heavy rain impacted Northern Europe with high delays at airports such as Amsterdam Schiphol, London Heathrow, London Gatwick and Vienna. Sandstorms impacted operations in Canary Islands. Ground handling union industrial action at Helsinki airport on 26 and 27 February also occurred.

Average Delay per Flight on Departure (mins) - February 2020



Average Delay per Flight on Arrival (mins) - February 2020

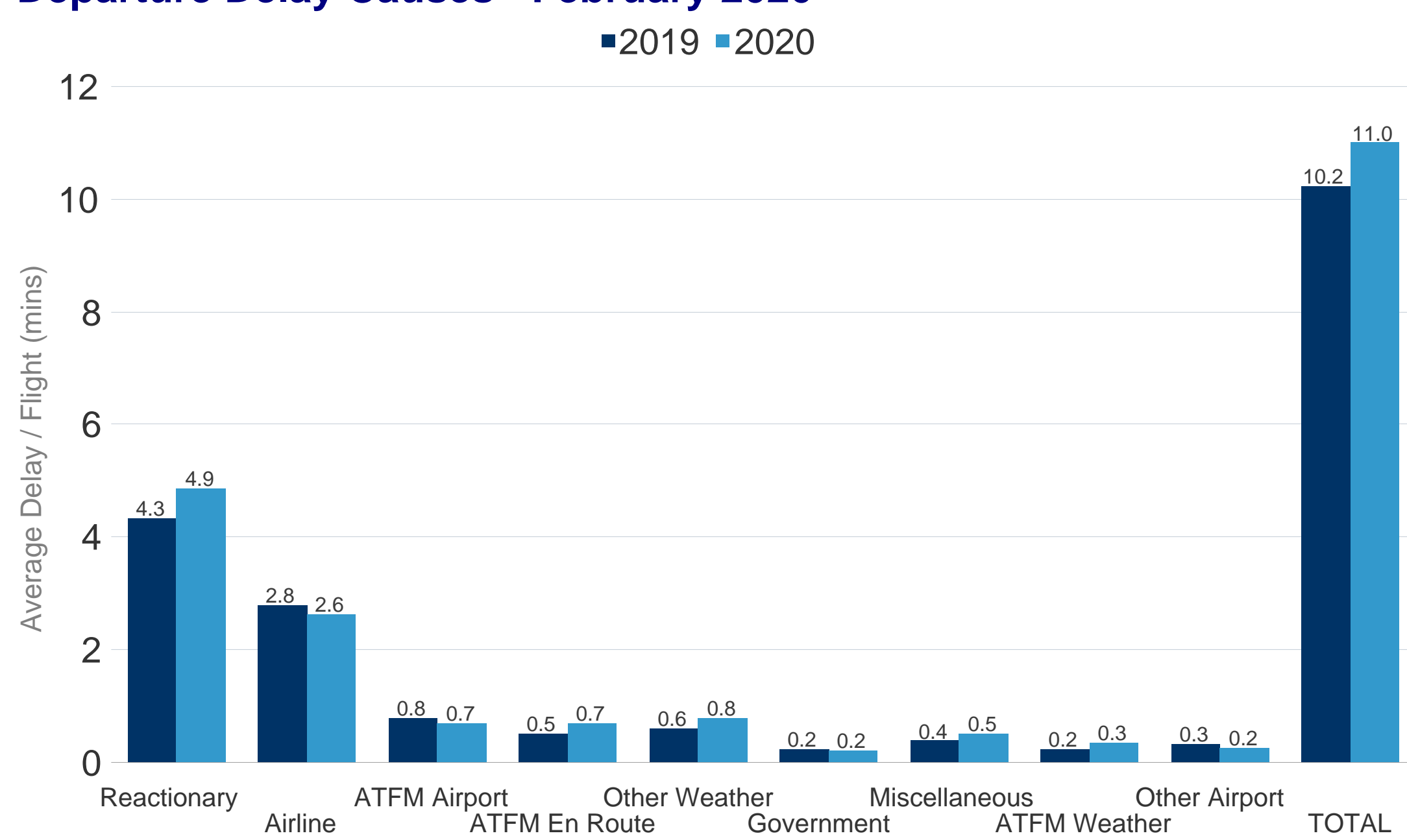


In February 2020 the average delay per flight on departure was 11.0 minutes per flight. This was **an increase** of 0.7 minutes per flight when compared to February 2019 where the average delay per flight was 10.2 minutes.

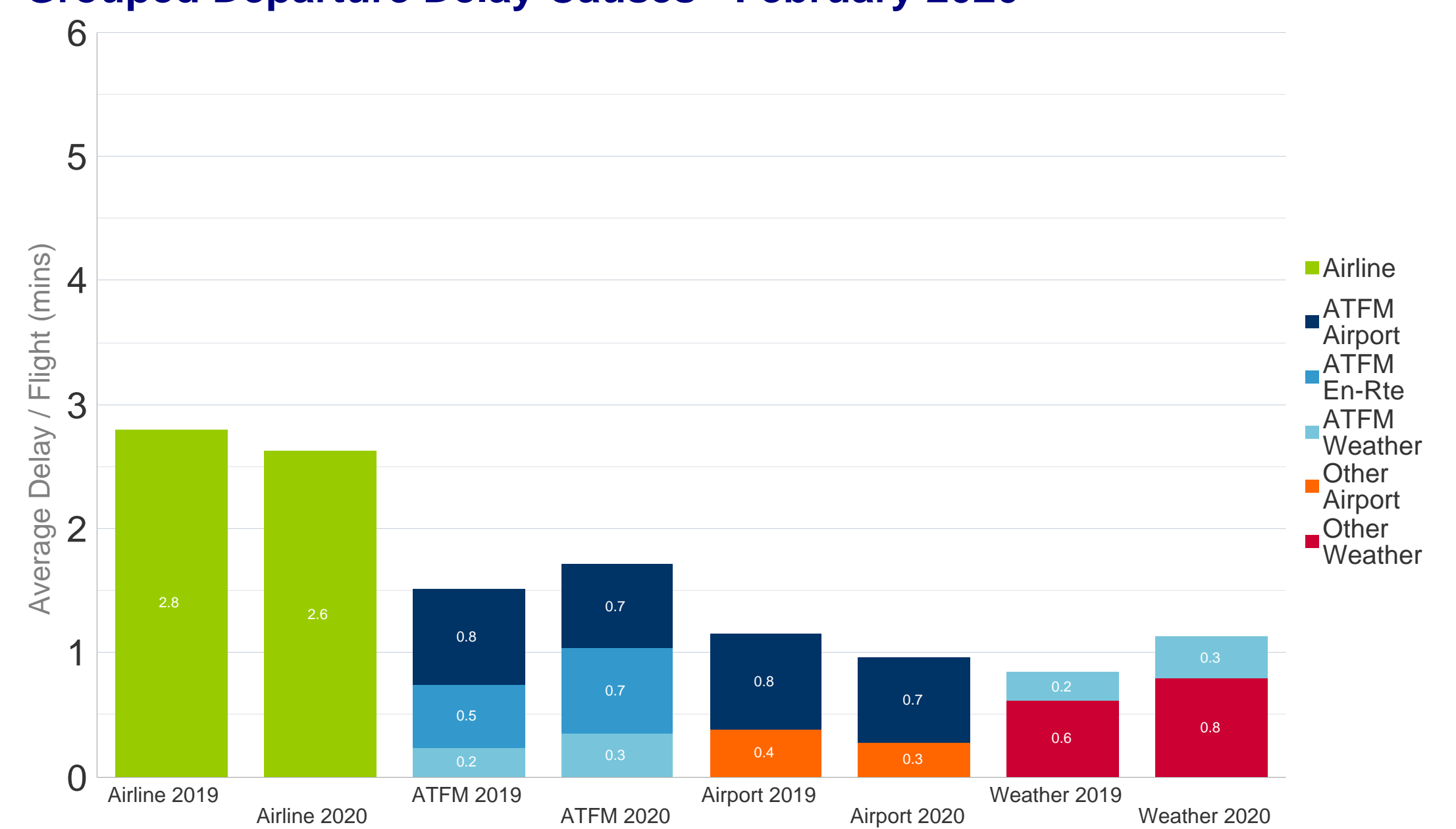
In February 2020 the average delay per flight on arrival was 11.2 minutes per flight. This was **an increase** of 1.5 minutes per flight when compared to February 2019 where the average delay per flight was 9.7 minutes.

Further analysis of the delay causes shows that reactionary delay contributed 4.9 minutes to the average delay per flight in February 2020.

Departure Delay Causes - February 2020



Grouped Departure Delay Causes - February 2020



The First Look at Delays is based on partial airline data to be updated once the full dataset is available.
Current CODA Coverage of IFR Flights in ECAC February 2020: 45.4%
Date of publication: 23/03/2020 Eurocontrol TLP status: White (Public Information)

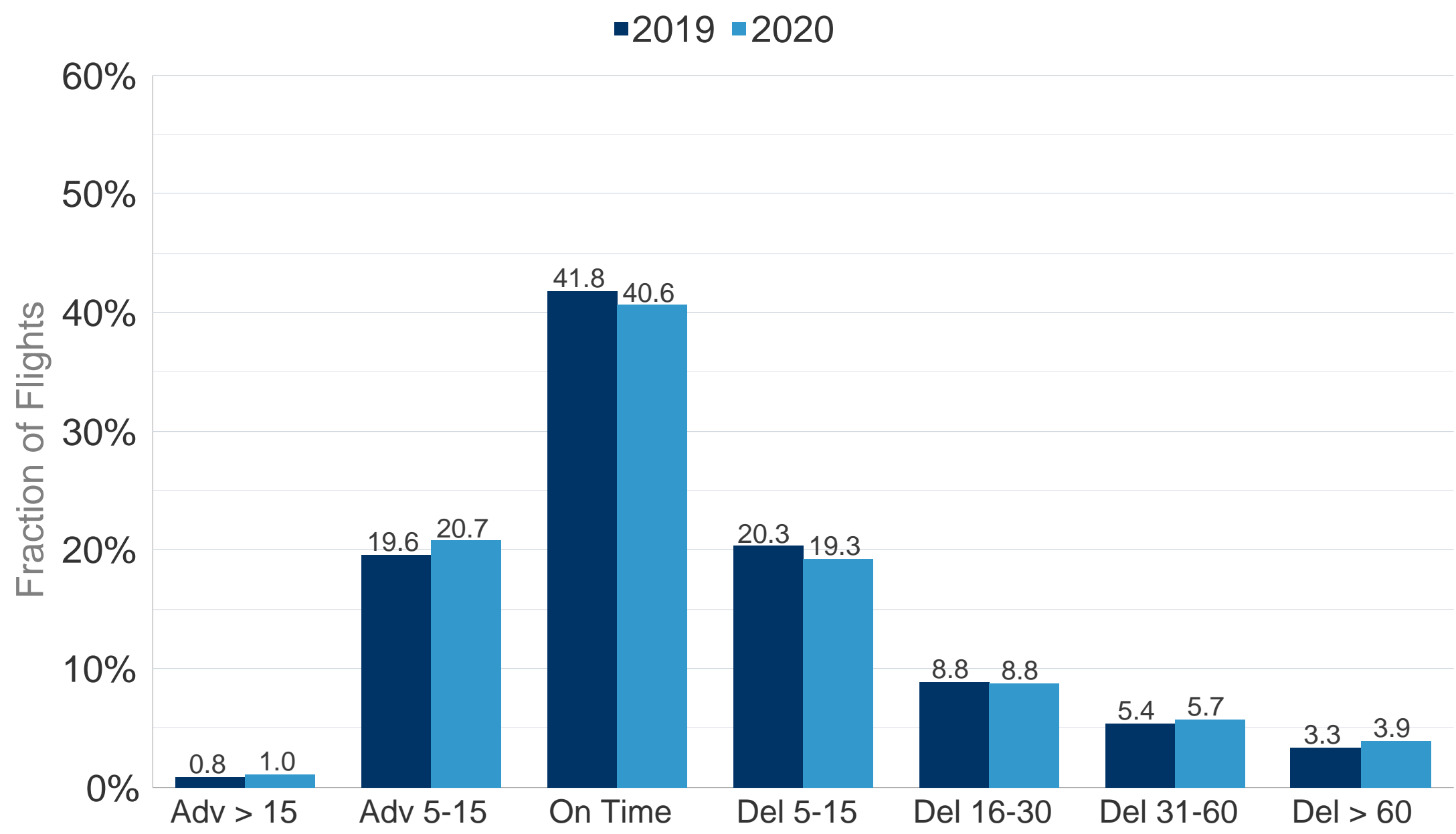
SUPPORTING EUROPEAN AVIATION



NETWORK
MANAGER

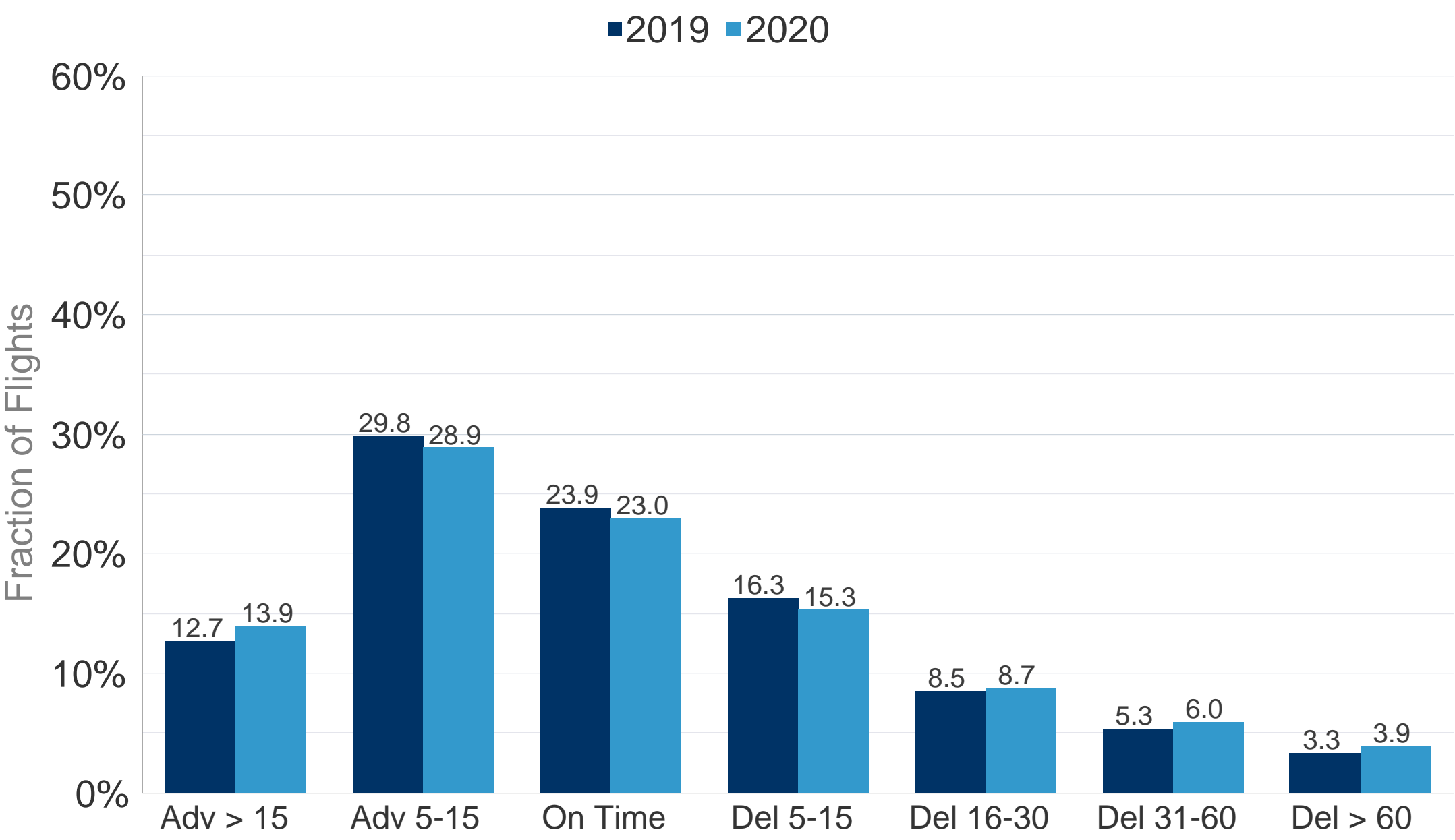


All Causes Departure Punctuality - February 2020



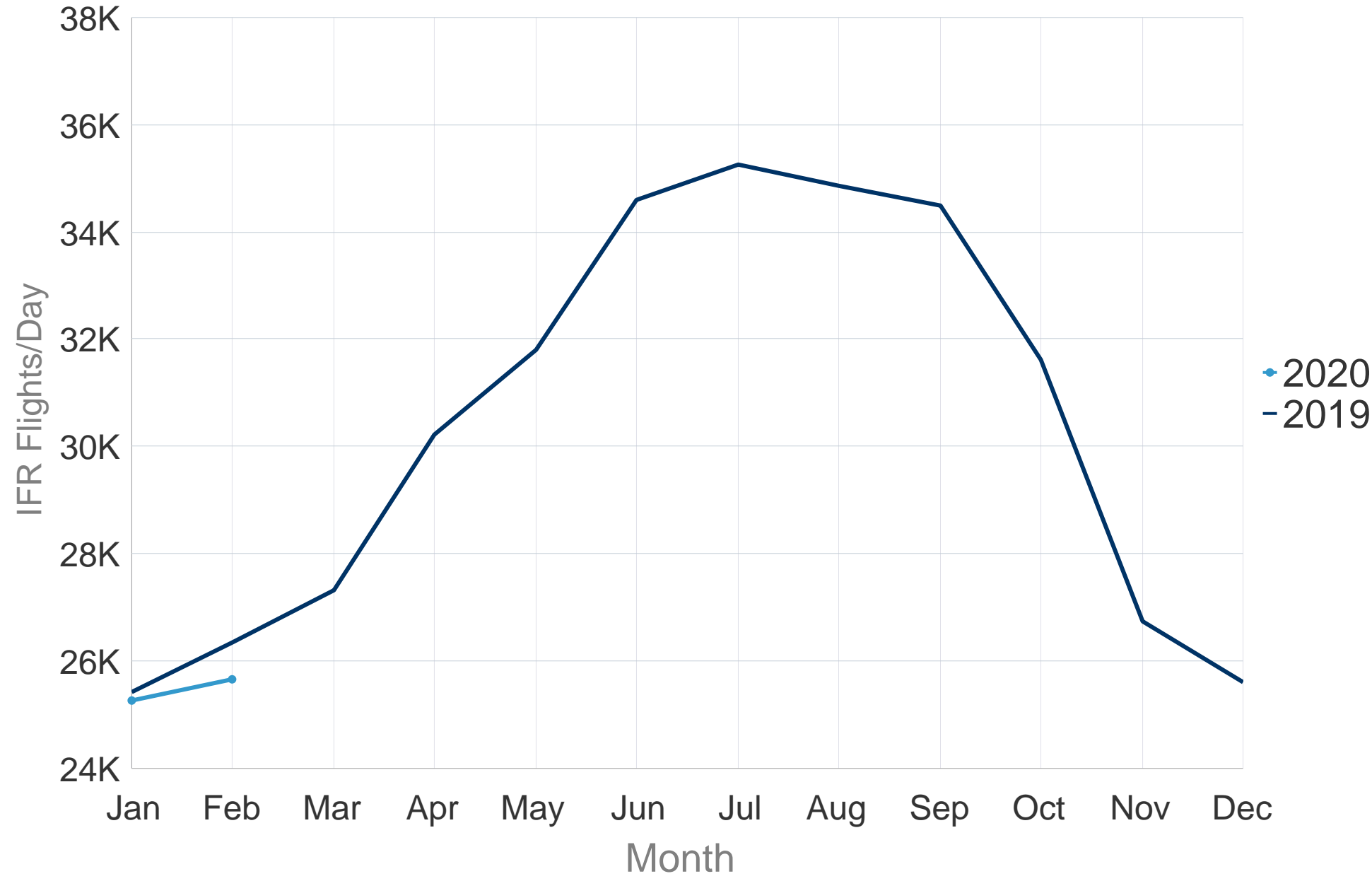
In February 2020, 40.6% of the flights departed within the 5 minutes threshold before or after the scheduled departure time (STD); **a decrease** of 1.2 points from 41.8% compared to previous year. Flights delayed >30 minutes from all-causes **increased** from 8.7% to 9.6%.

All Causes Arrival Punctuality - February 2020

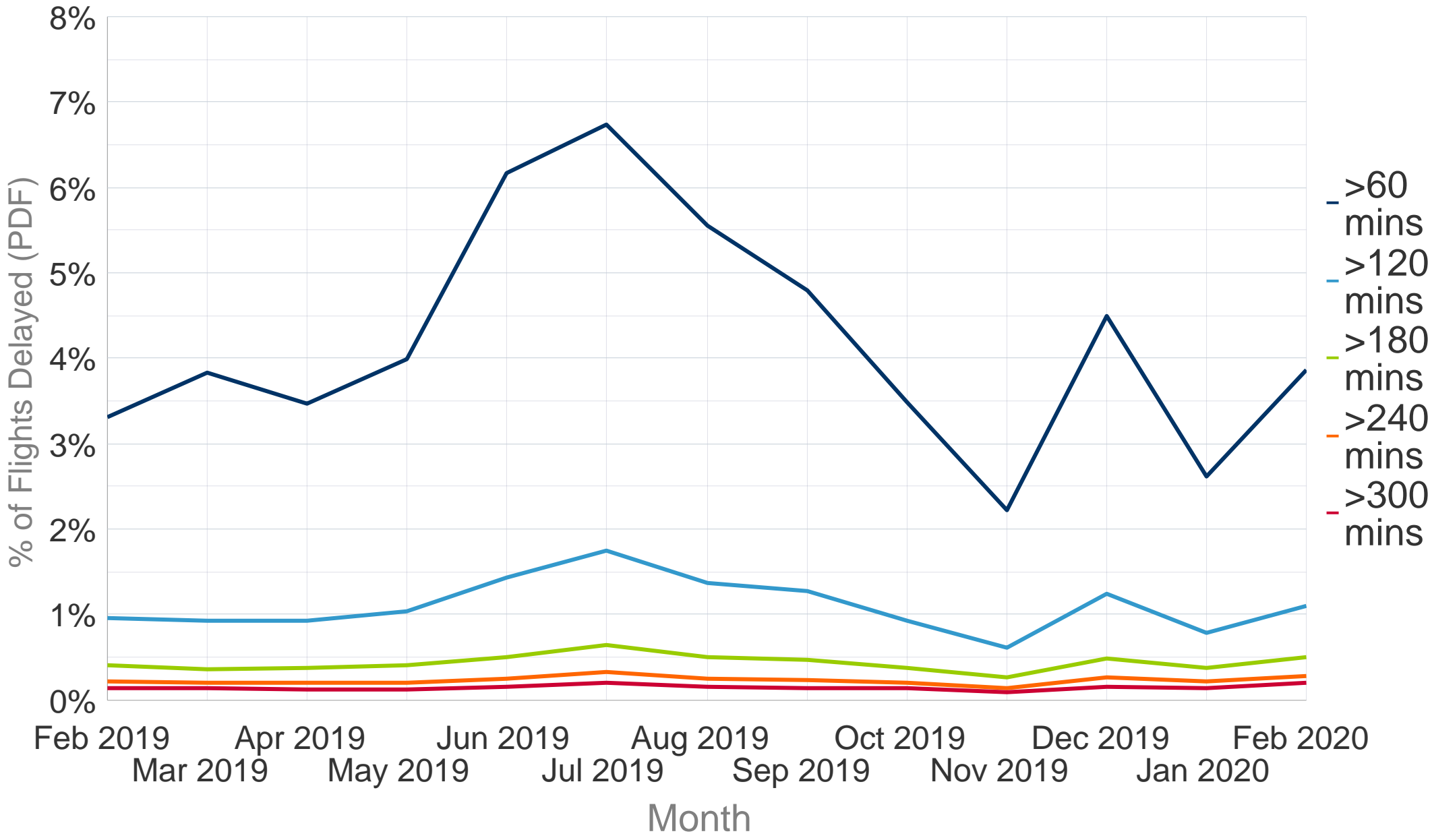


In February 2020, 23.0% of the flights arrived within the 5 minutes threshold before or after the scheduled arrival time (STA); **a decrease** of 0.9 points from 23.9% compared to previous year. Flights delayed >30 minutes from all-causes **increased** from 8.6% to 9.9%.

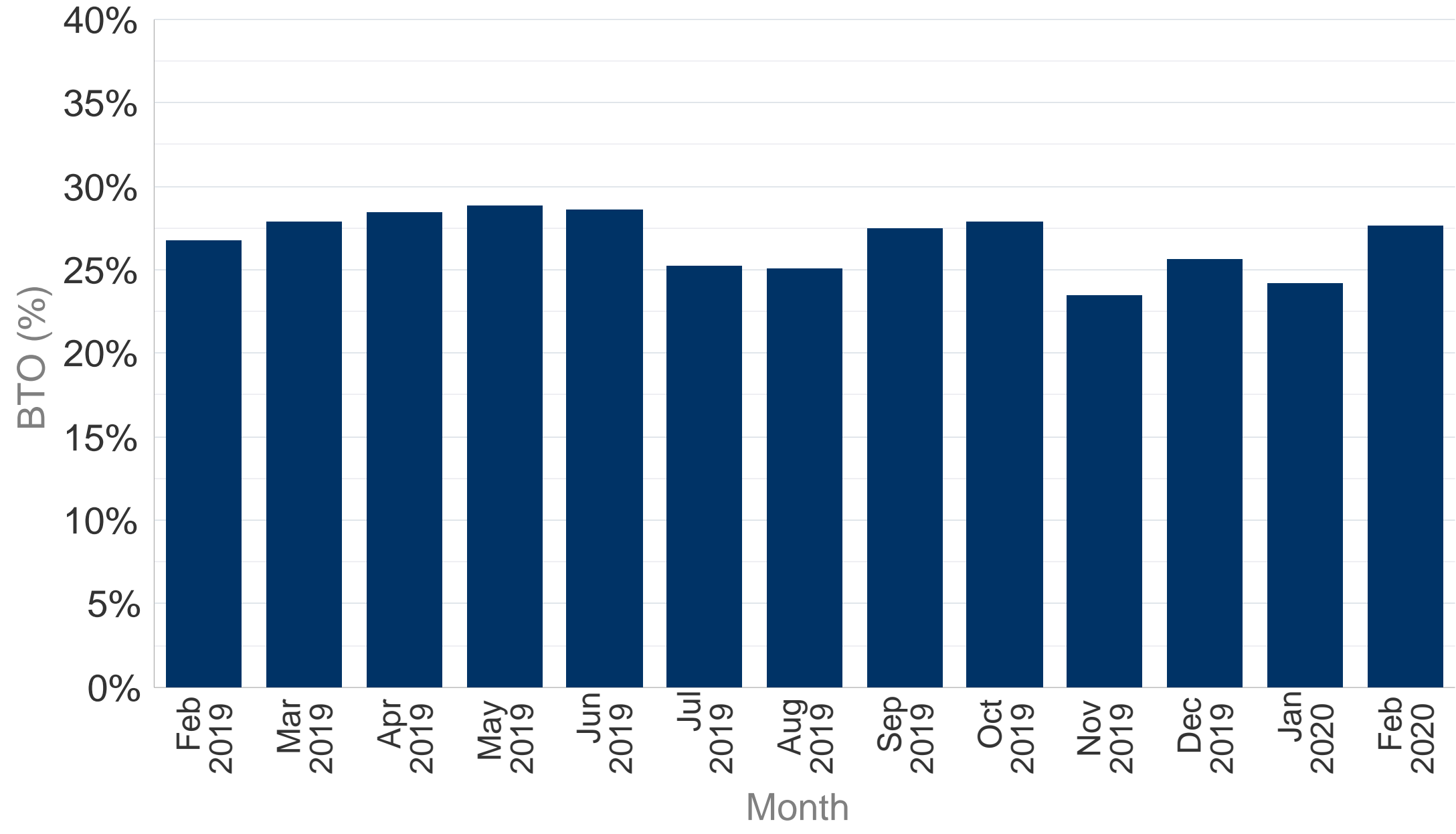
Average daily flights for ECAC. All flows



Long Departure Delays All-Causes



Block Time Overshoot (BTO)



Delay Difference Indicator - Flight (DDI-F)

