

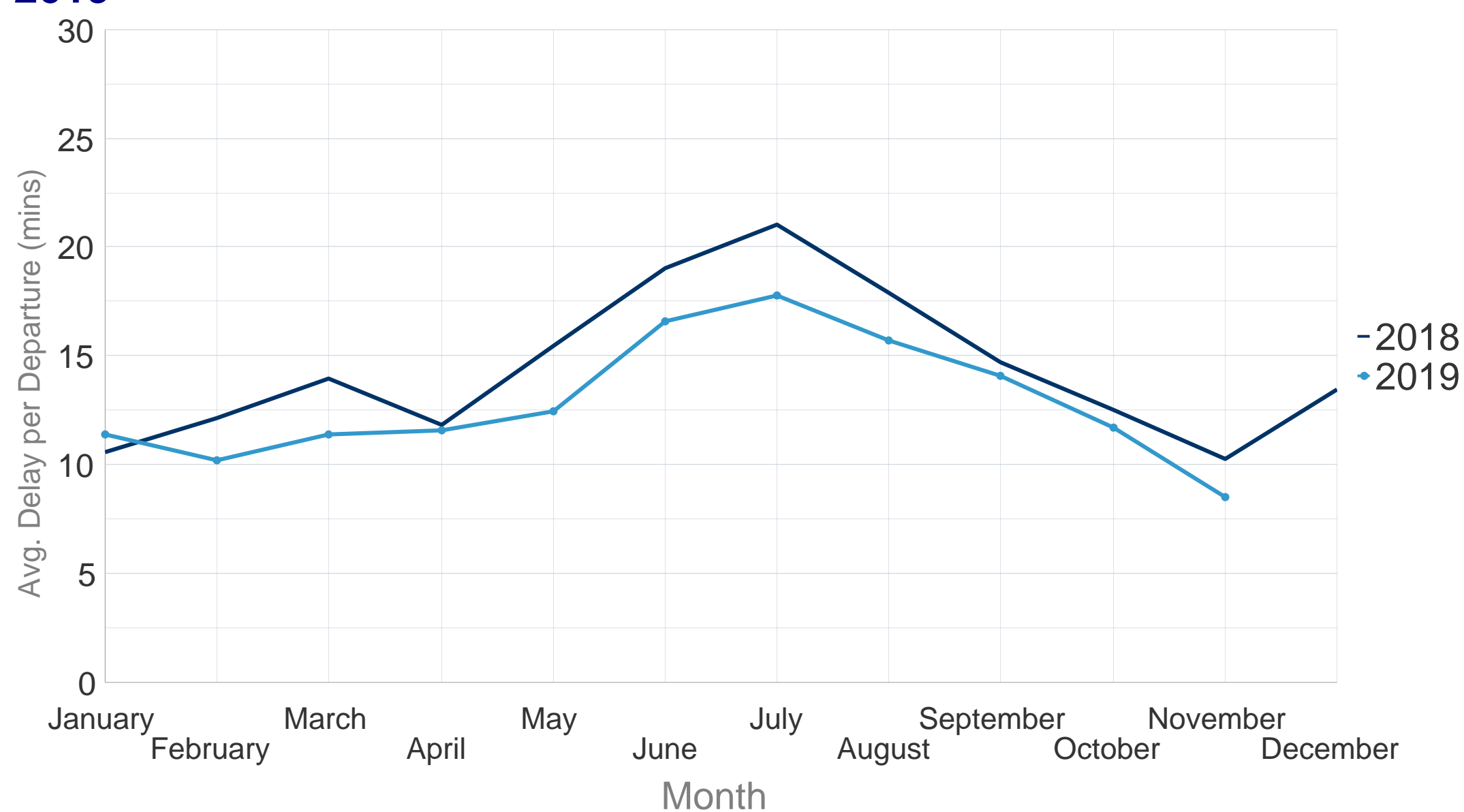
All-Causes Delay to Air Transport in Europe



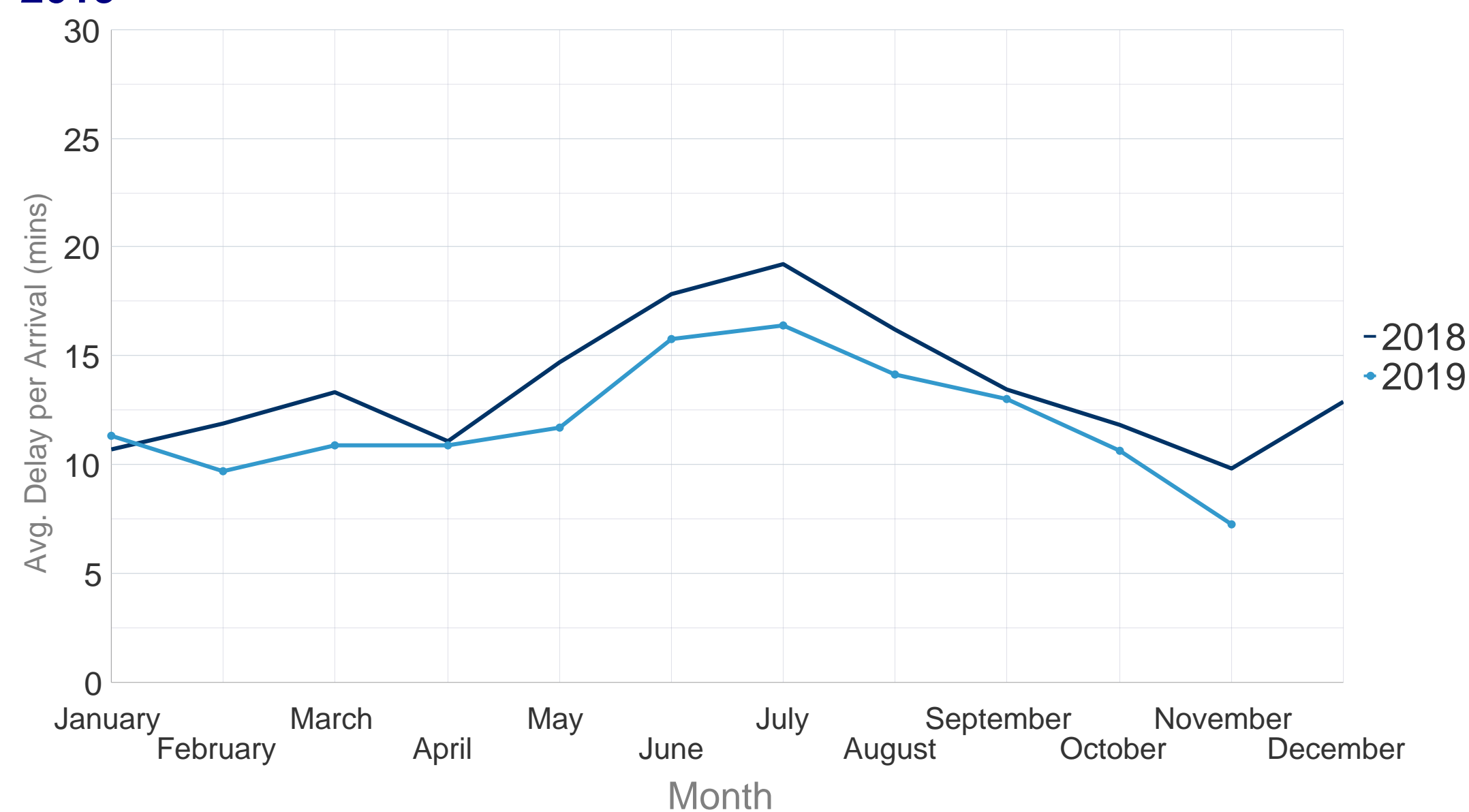
November 2019

In November, traffic decreased by 1.9% compared to November 2018. Lufthansa industrial action on 07 and 08 November led to approximately 1,300 fewer flights; An industrial action by ground personnel at Helsinki Airport on 25 and 26 November resulted in approximately 238 fewer flights. The Italian ATC industrial action on 25 November generated en-route ATFM delay and airport ATFM delay. On 25 November, low visibility impacted several airports such as Amsterdam Schiphol, Dublin, Frankfurt and Munich airports; Staffing shortage in Brussels ACC; Airport capacity delays in Lisbon airport.

Average Delay per Flight on Departure (mins) - November 2019



Average Delay per Flight on Arrival (mins) - November 2019

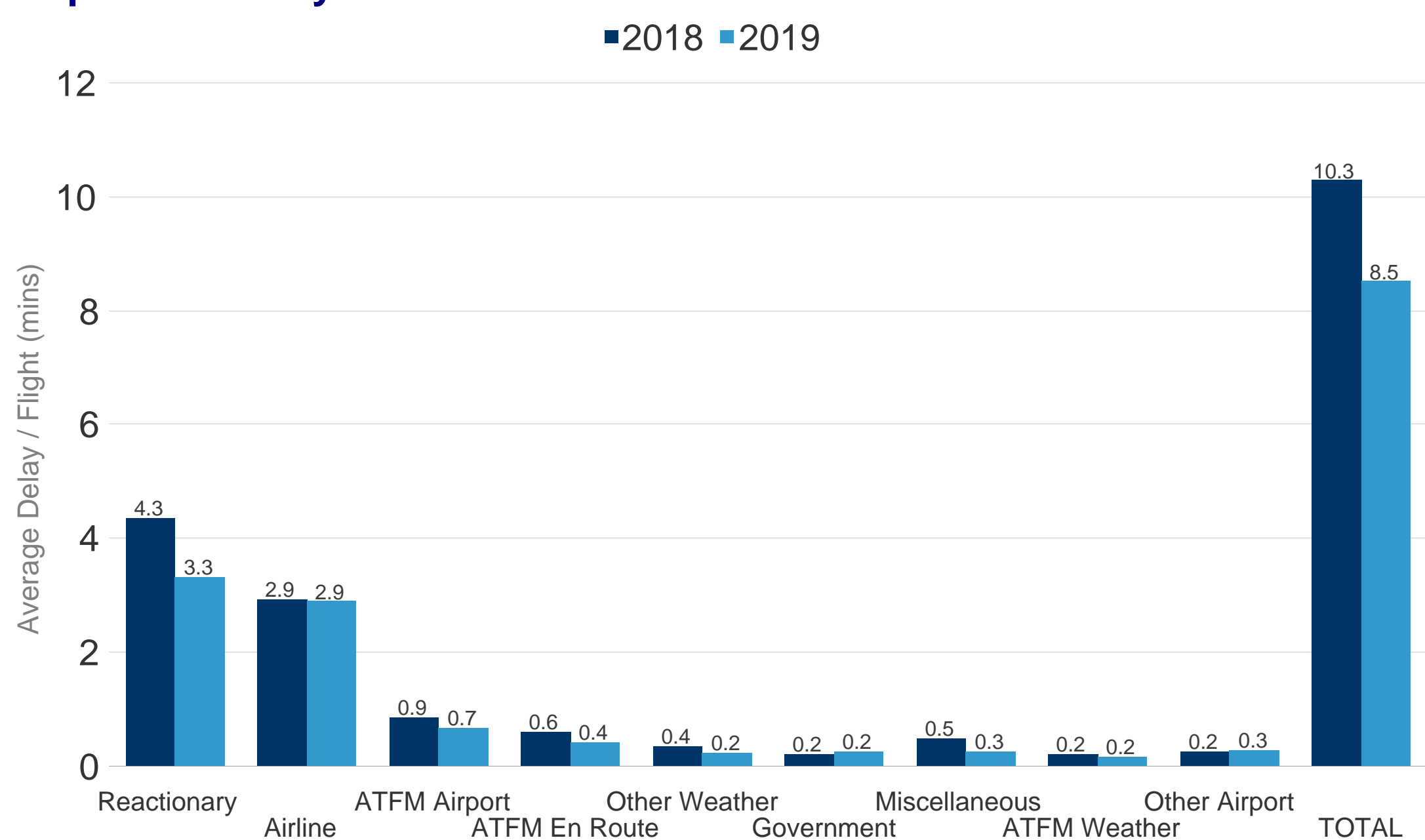


In November 2019 the average delay per flight on departure was 8.5 minutes per flight. This was a **decrease** of 1.8 minutes per flight when compared to November 2018 where the average delay per flight was 10.3 minutes.

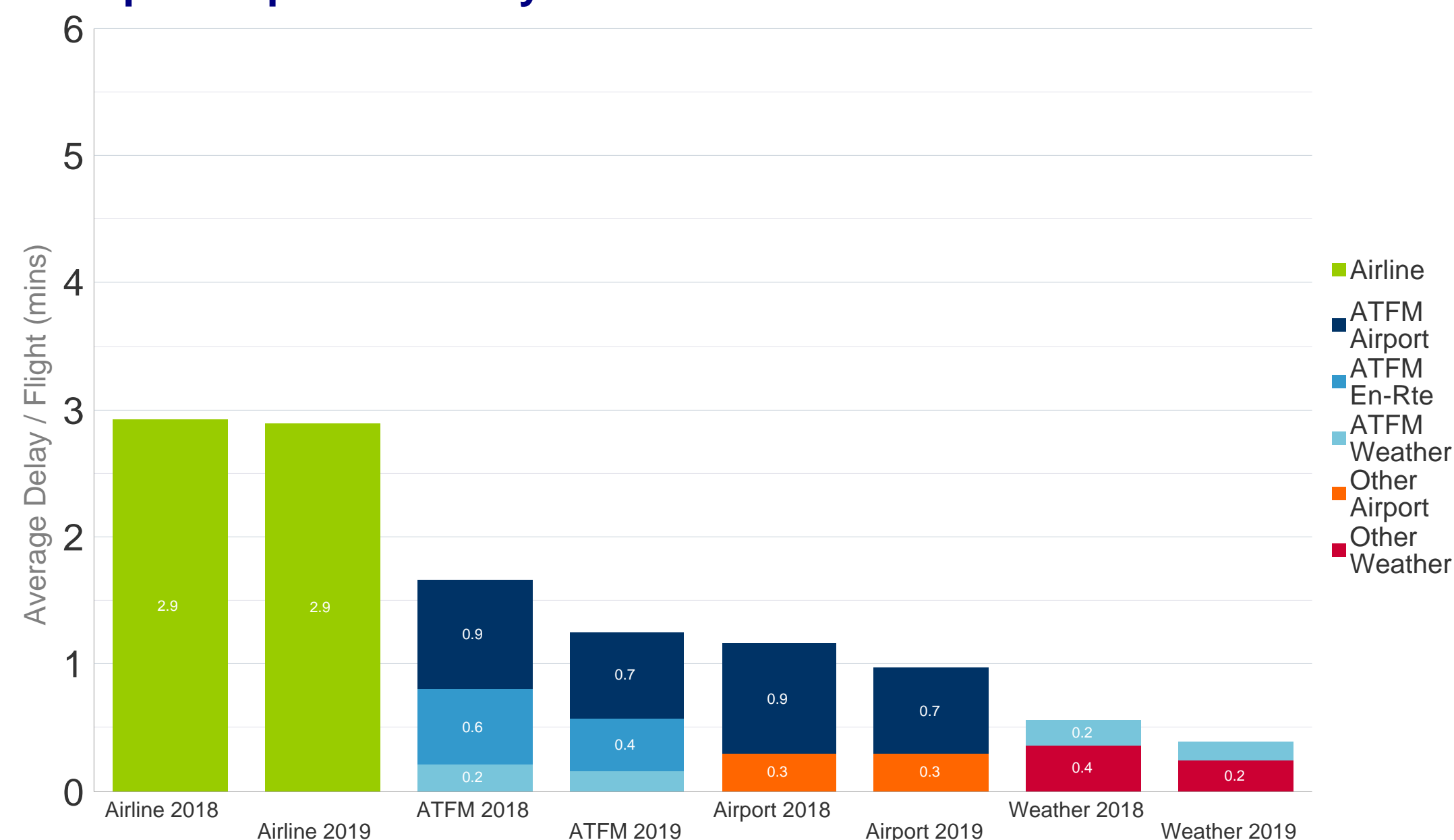
In November 2019 the average delay per flight on arrival was 7.3 minutes per flight. This was a **decrease** of 2.5 minutes per flight when compared to November 2018 where the average delay per flight was 9.8 minutes.

Further analysis of the delay causes shows that reactionary delay contributed 3.3 minutes to the average delay per flight in November 2019.

Departure Delay Causes - November 2019



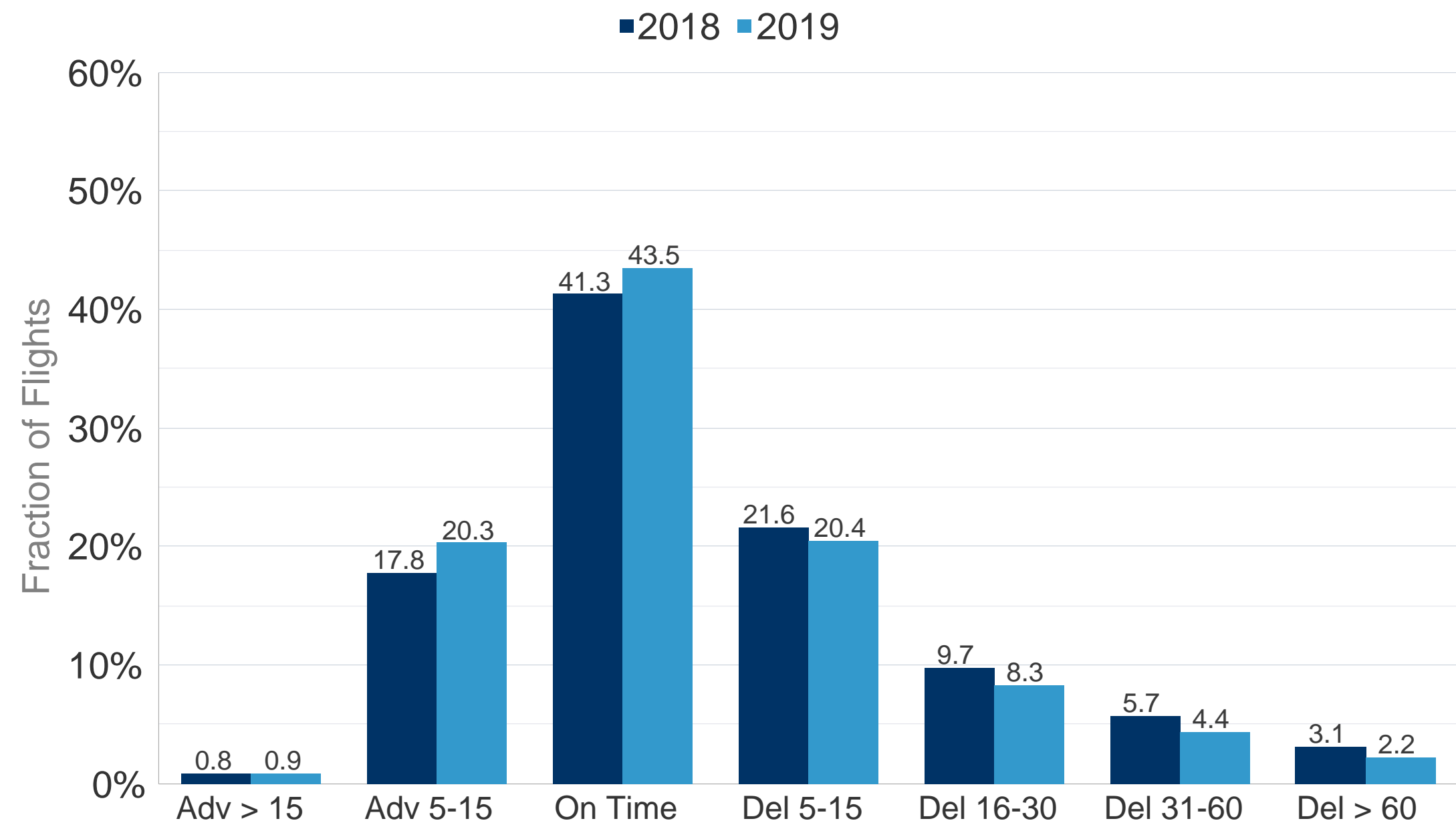
Grouped Departure Delay Causes - November 2019



The First Look at Delays is based on partial airline data to be updated once the full dataset is available.
 Current CODA Coverage of IFR Flights in ECAC November 2019: 52.1%
 Date of publication: 06/01/2020 Eurocontrol TLP status: White (Public Information)

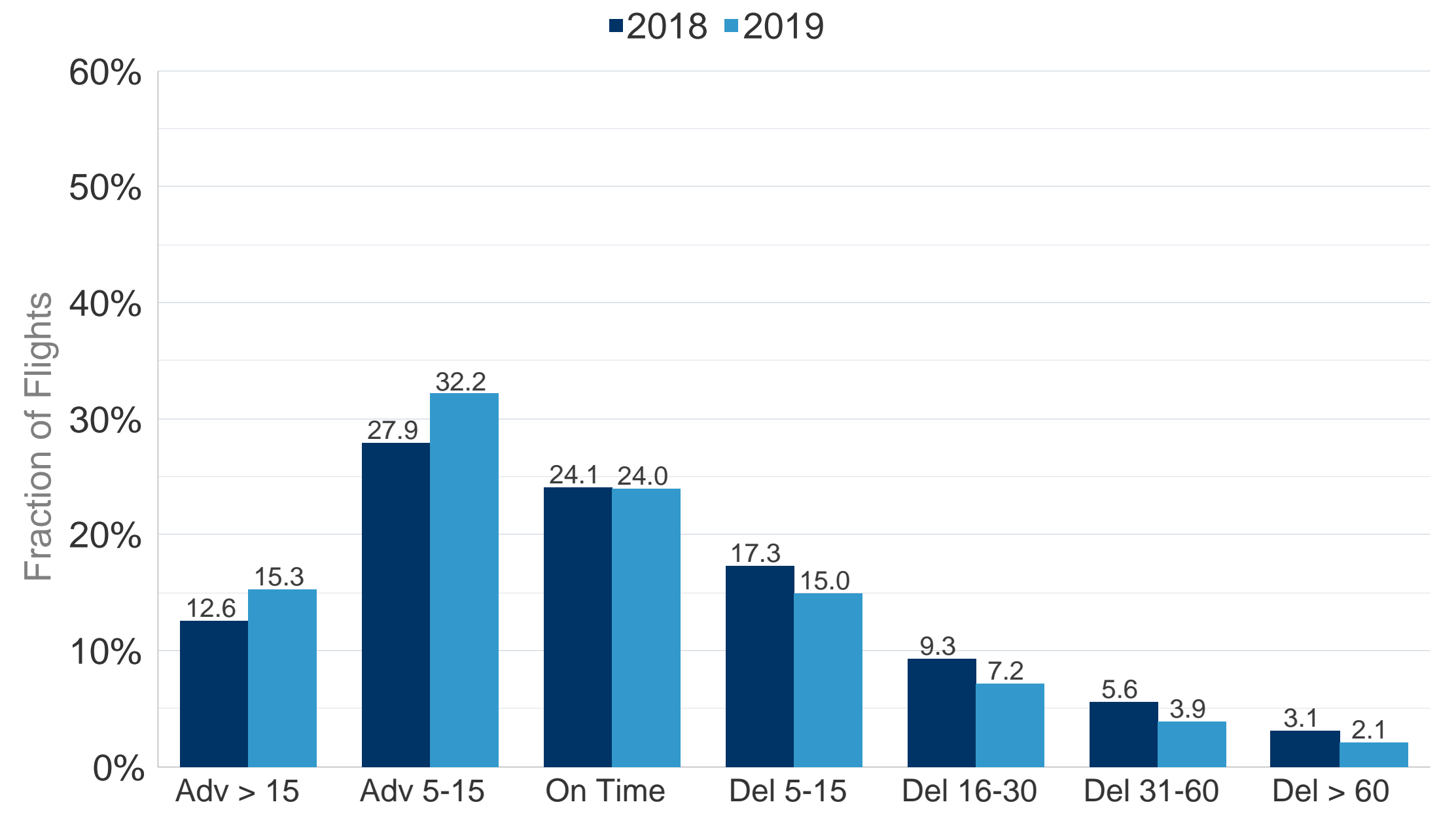


All Causes Departure Punctuality - November 2019



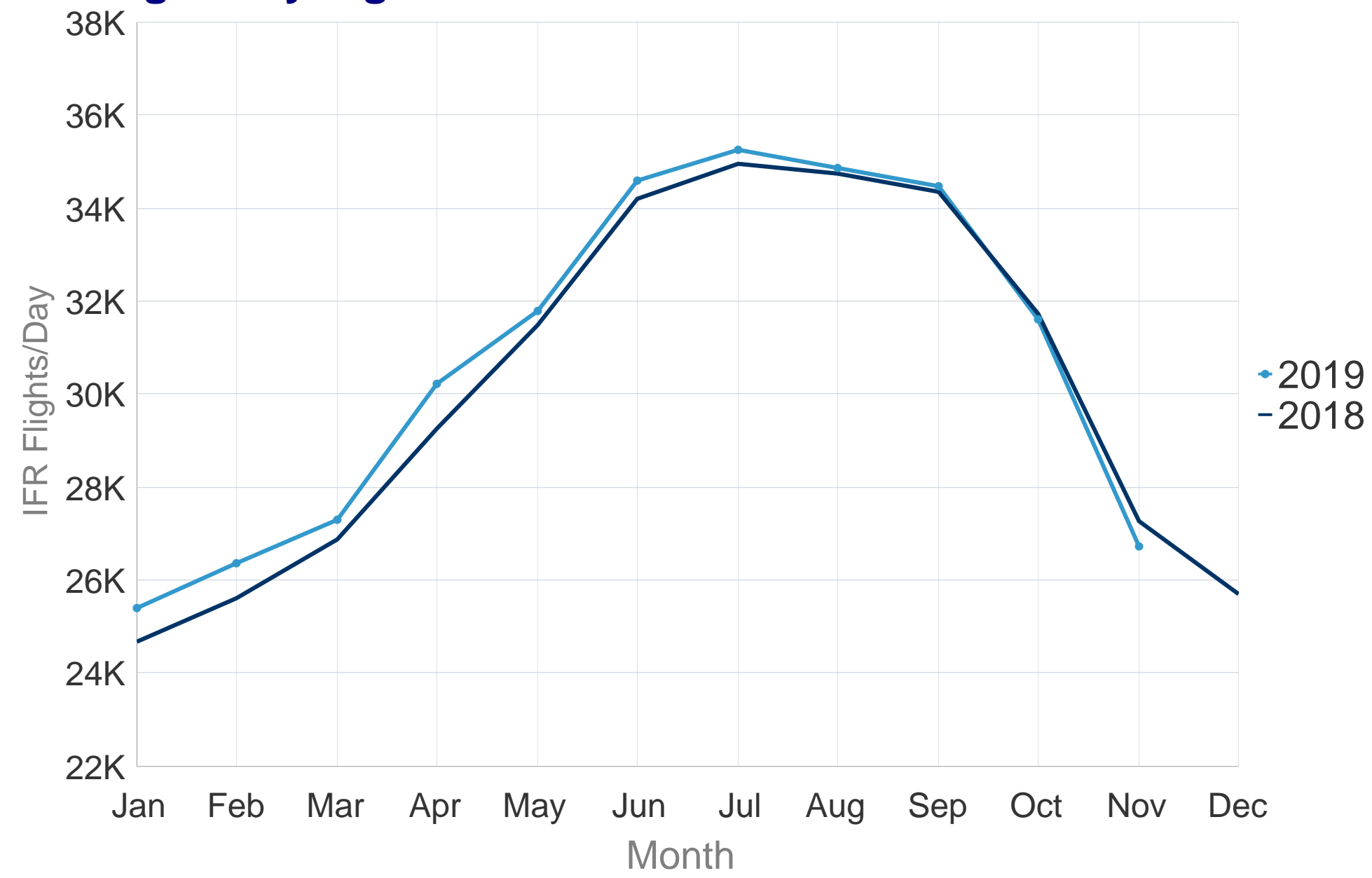
In November 2019, 43.5% of the flights departed within the 5 minutes threshold before or after the scheduled departure time (STD); **an increase** of 2.2 points from 41.3% compared to previous year. Flights delayed >30 minutes from all-causes **decreased** from 8.8% to 6.6%.

All Causes Arrival Punctuality - November 2019

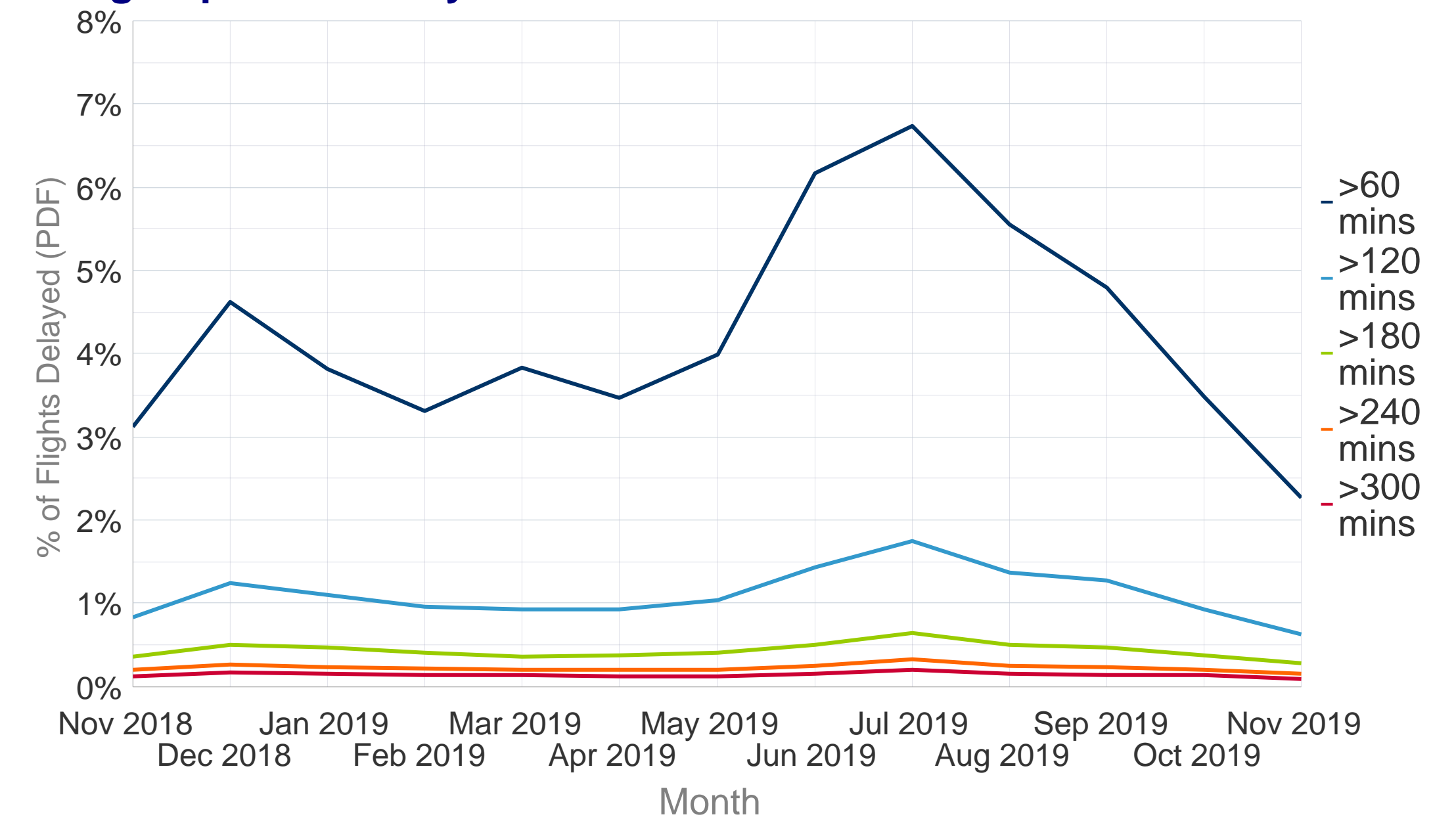


In November 2019, 24.0% of the flights arrived within the 5 minutes threshold before or after the scheduled arrival time (STA); **a decrease** of 0.1 points from 24.1% compared to previous year. Flights delayed >30 minutes from all-causes **decreased** from 8.6% to 6.0%.

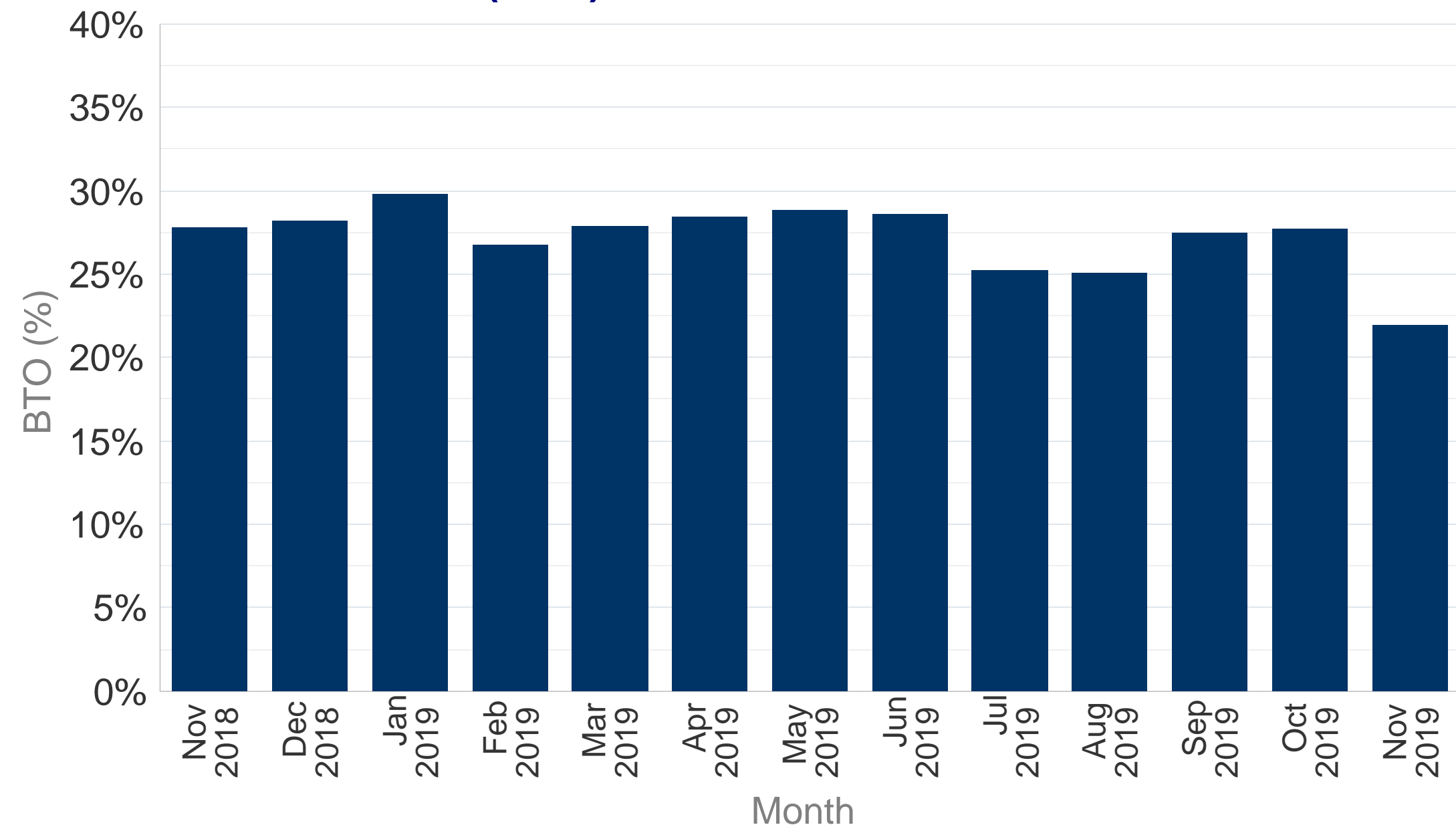
Average daily flights for ECAC. All flows



Long Departure Delays All-Causes



Block Time Overshoot (BTO)



Delay Difference Indicator - Flight (DDI-F)

