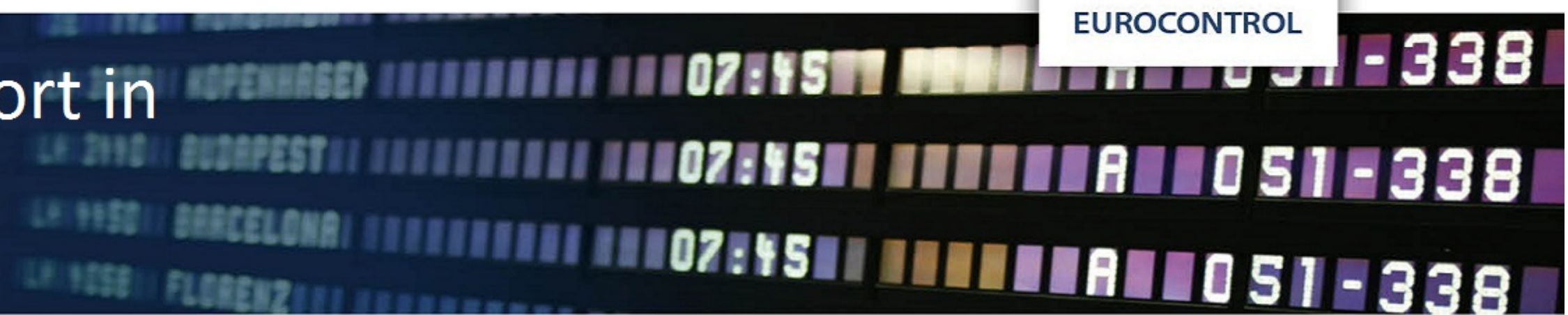




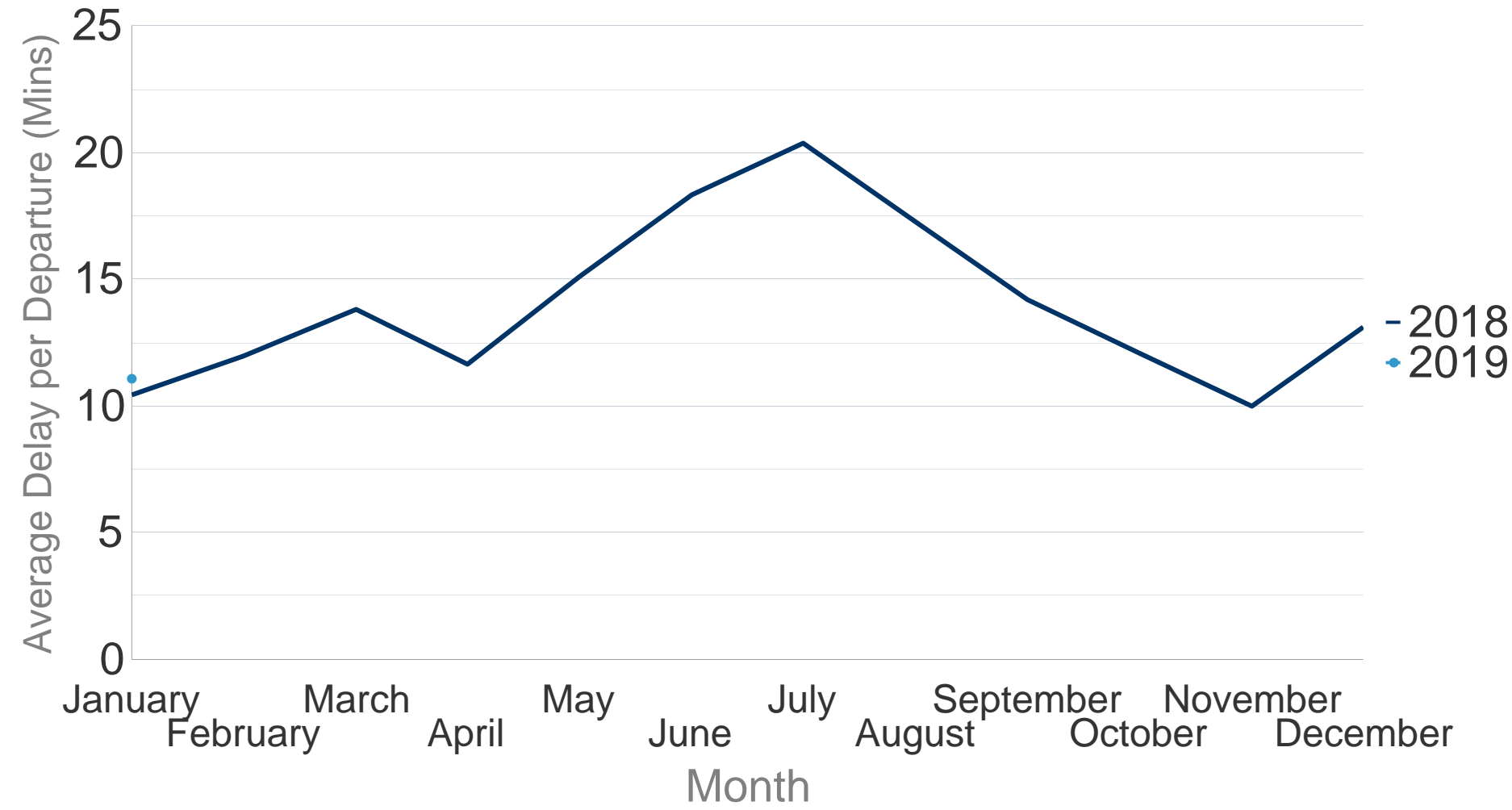
All-Causes Delay to Air Transport in Europe



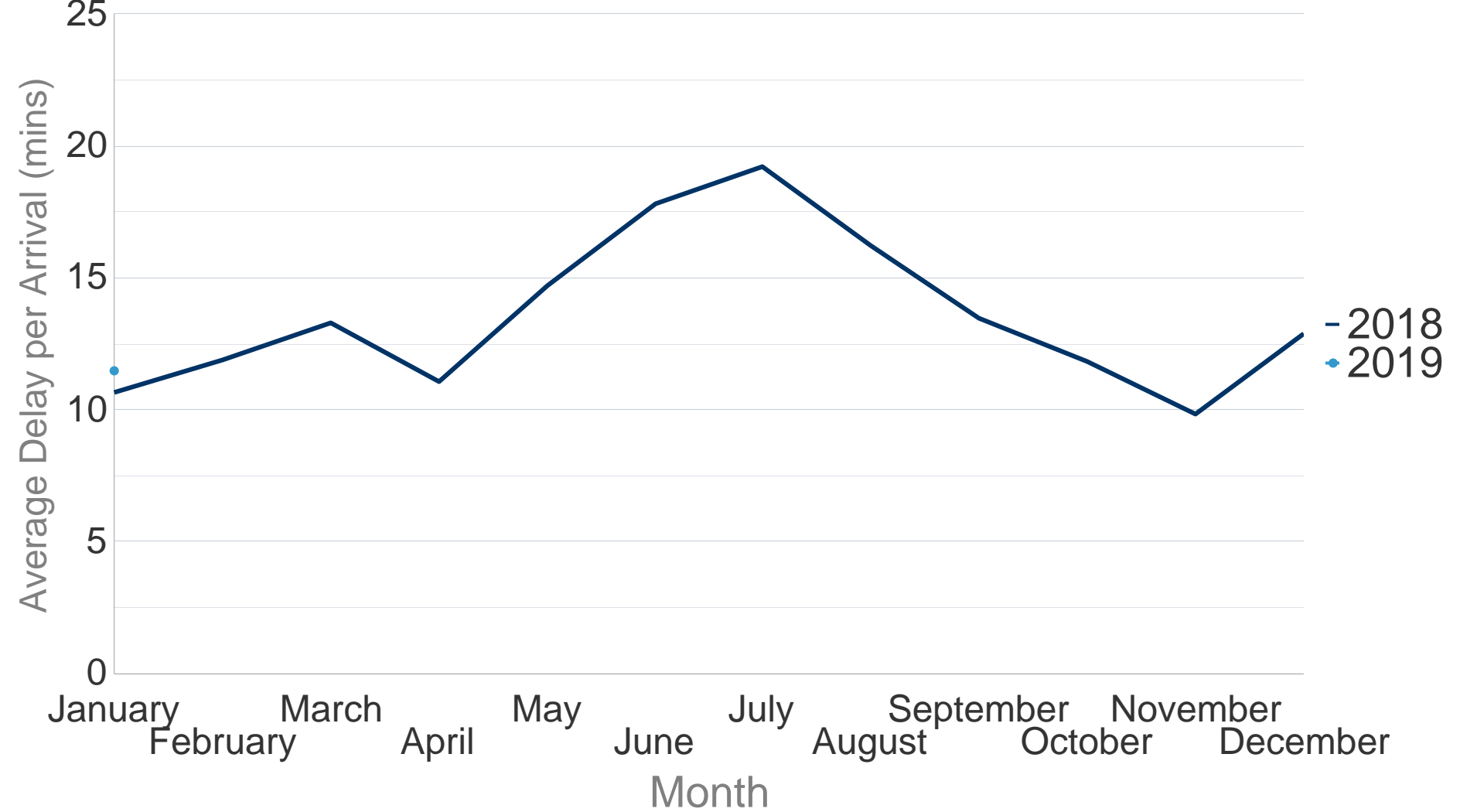
January 2019

In January, industrial actions by security personnel in Germany caused disruptions at Berlin Tegel airport on 07 January, at Dusseldorf airport on 09 and 10 January and on 15 January at 8 German airports: Frankfurt-Main, Hamburg, Bremen, Hannover, Erfurt, Leipzig, Dresden and Munich. Operations were most disturbed at Frankfurt where only 603 Flights were recorded and at Hamburg, (187 flights). The Italian ATC industrial action on 11 January generated 5,290 minutes of en-route ATFM delay and 1,299 minutes of airport ATFM delay. NM estimates there were 265 flights which did not operate. Winter conditions impacted operations at Lisbon, Istanbul Ataturk and especially Amsterdam Schiphol airports.

Average Delay per Flight on Departure (mins) for January 2019



Average Delay per Flight on Arrival (mins) for January 2019



In January 2019 the average delay per flight on departure was 11.0 minutes per flight.

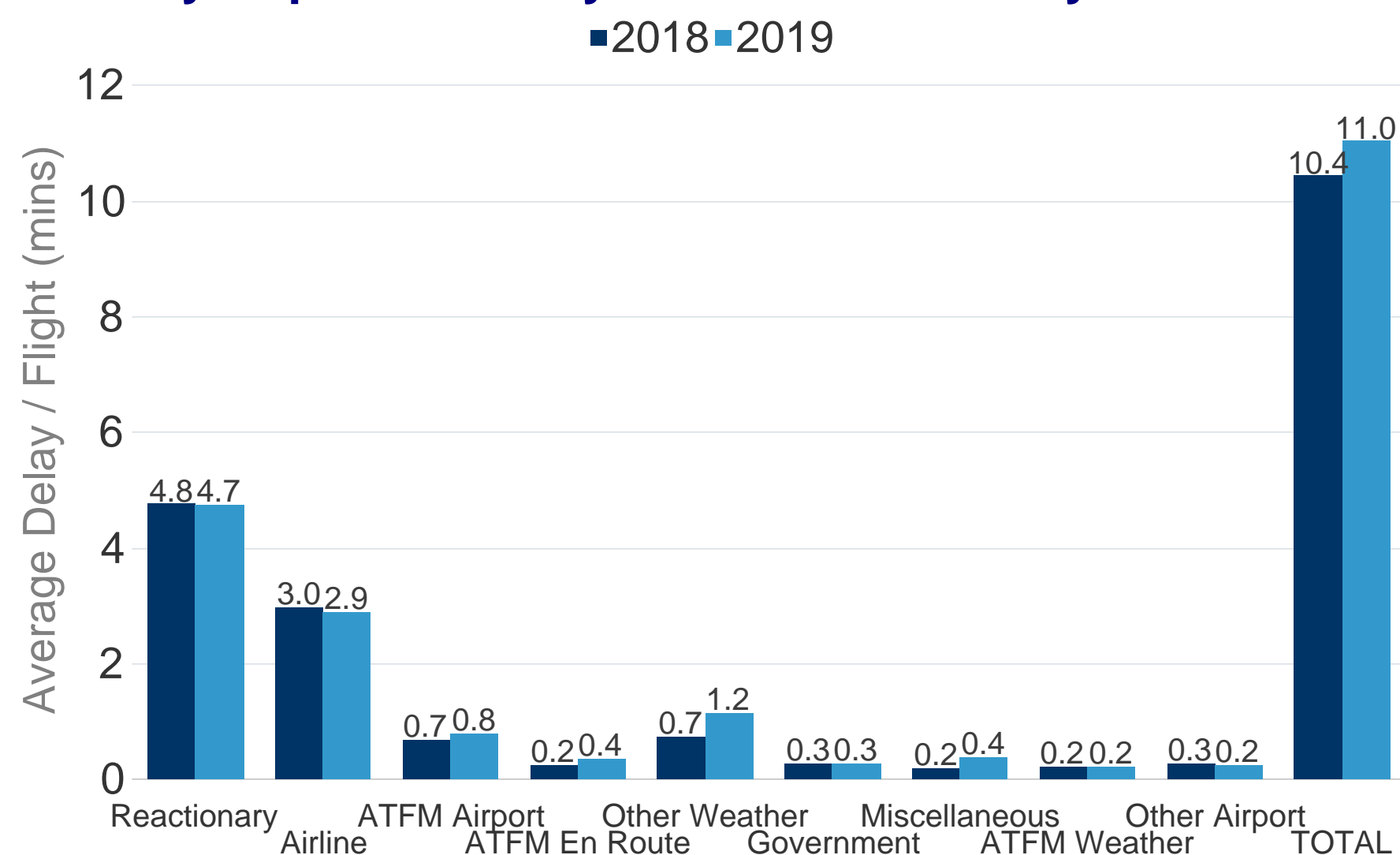
This was **an increase** of 0.6 minutes per flight when compared to January 2018 where the average delay per flight was 10.4 minutes.

Further analysis of the delay causes shows that reactionary delay contributed 4.7 minutes to the average delay per flight in January 2019.

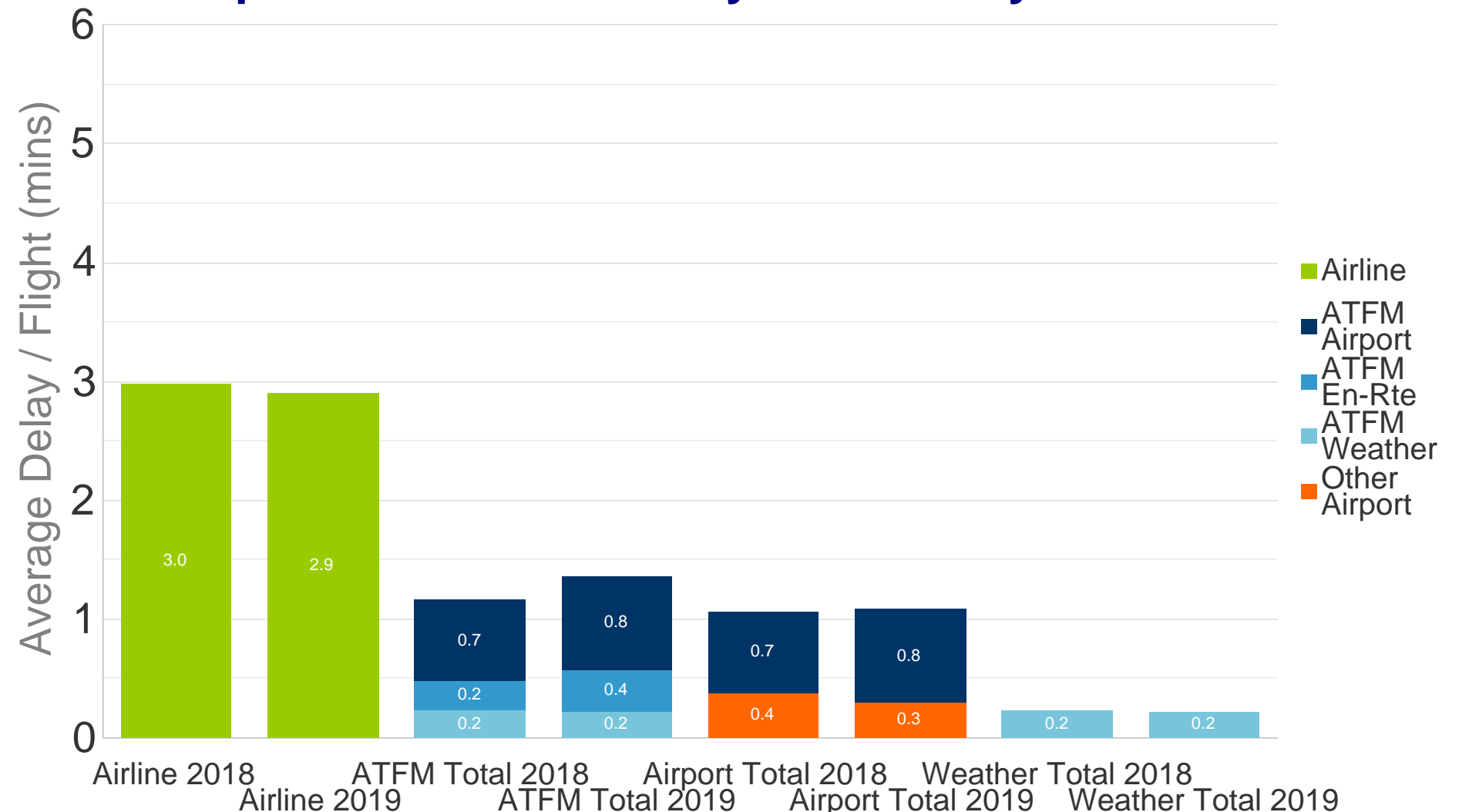
In January 2019 the average delay per flight on arrival was 11.5 minutes per flight.

This was **an increase** of 1.0 minutes per flight when compared to January 2018 where the average delay per flight was 10.7 minutes.

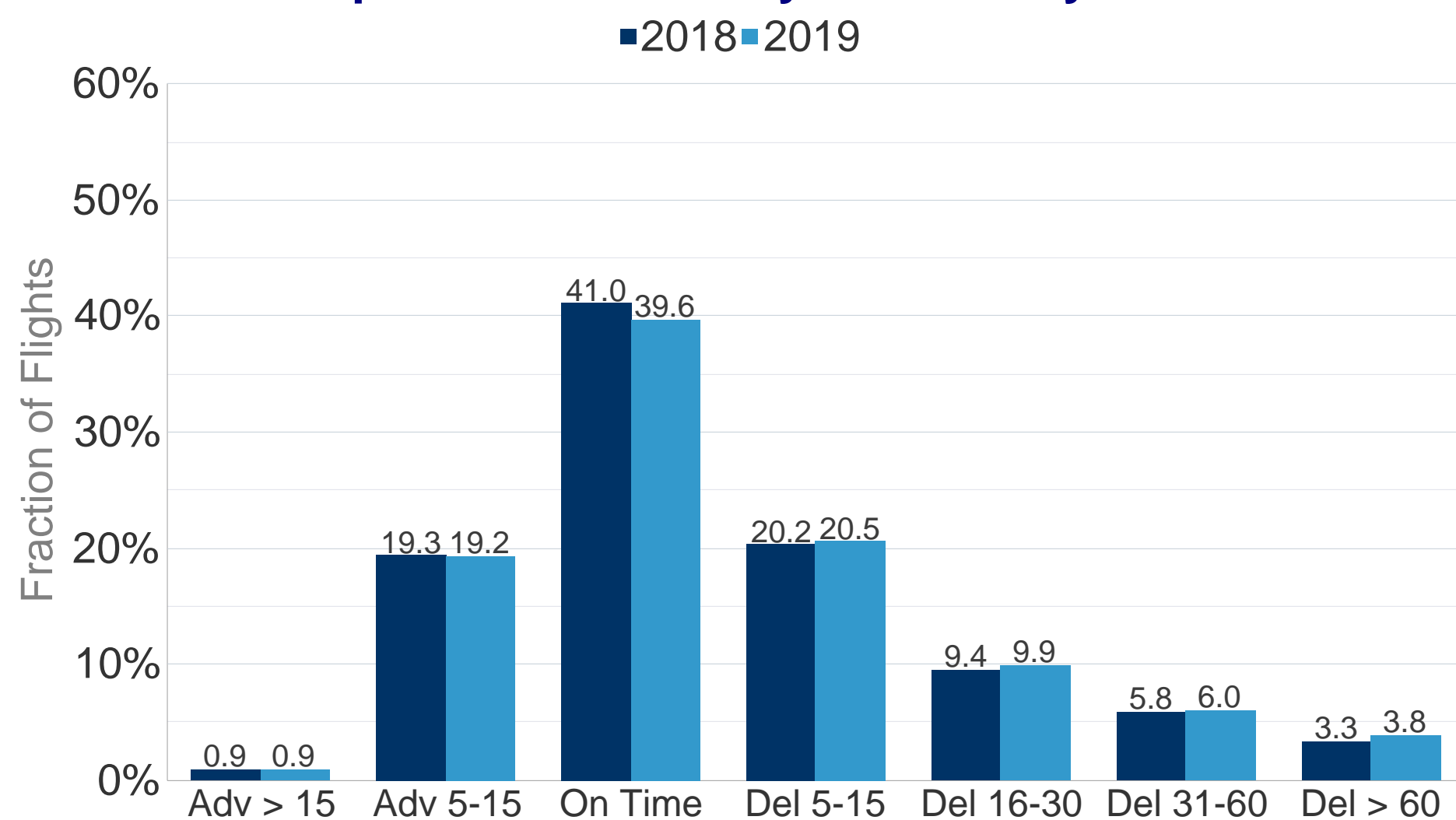
Primary Departure Delay Causes for January 2019



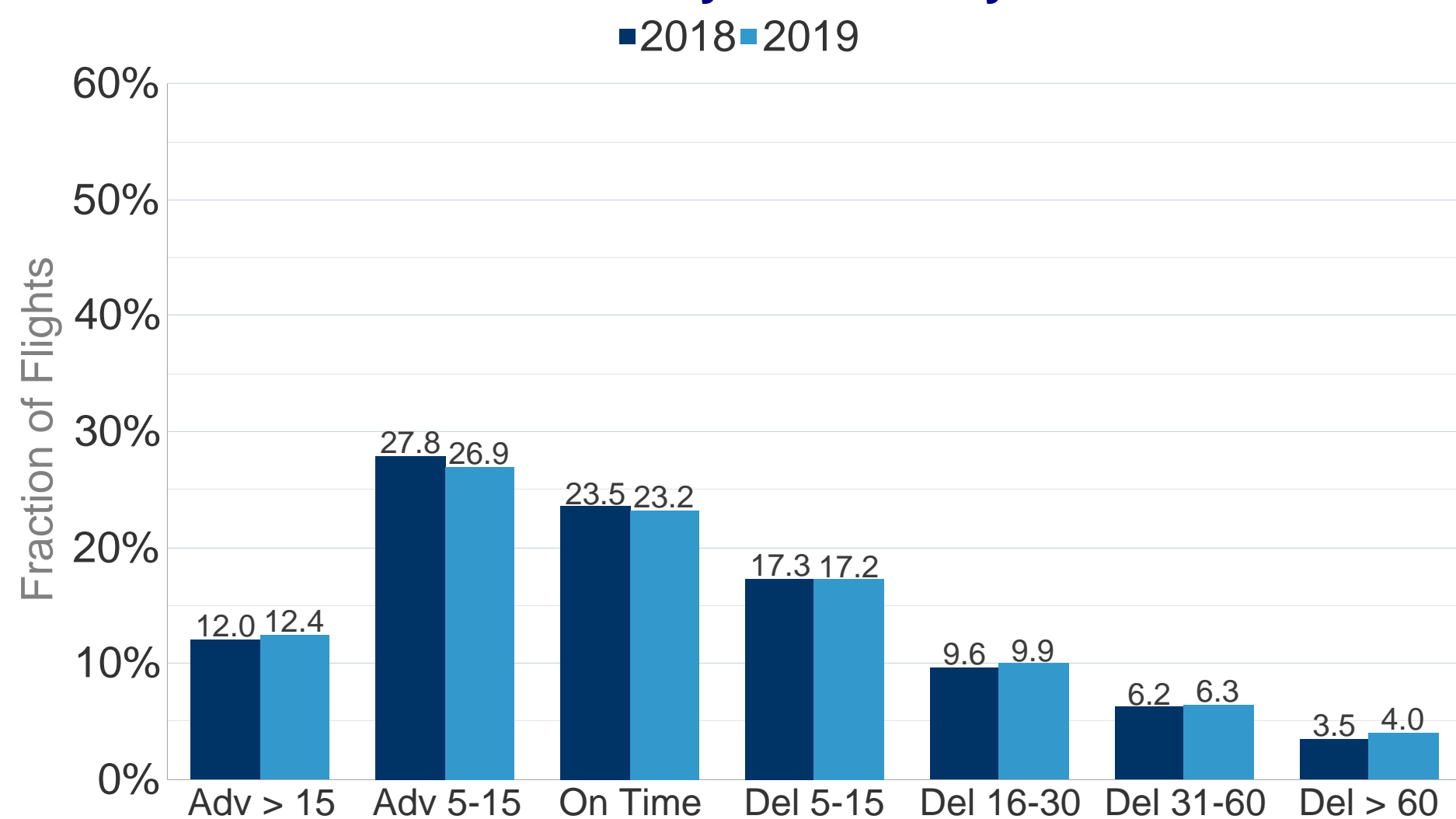
Airline-reported all-cause delay for January 2019



All Causes Departure Punctuality for January 2019



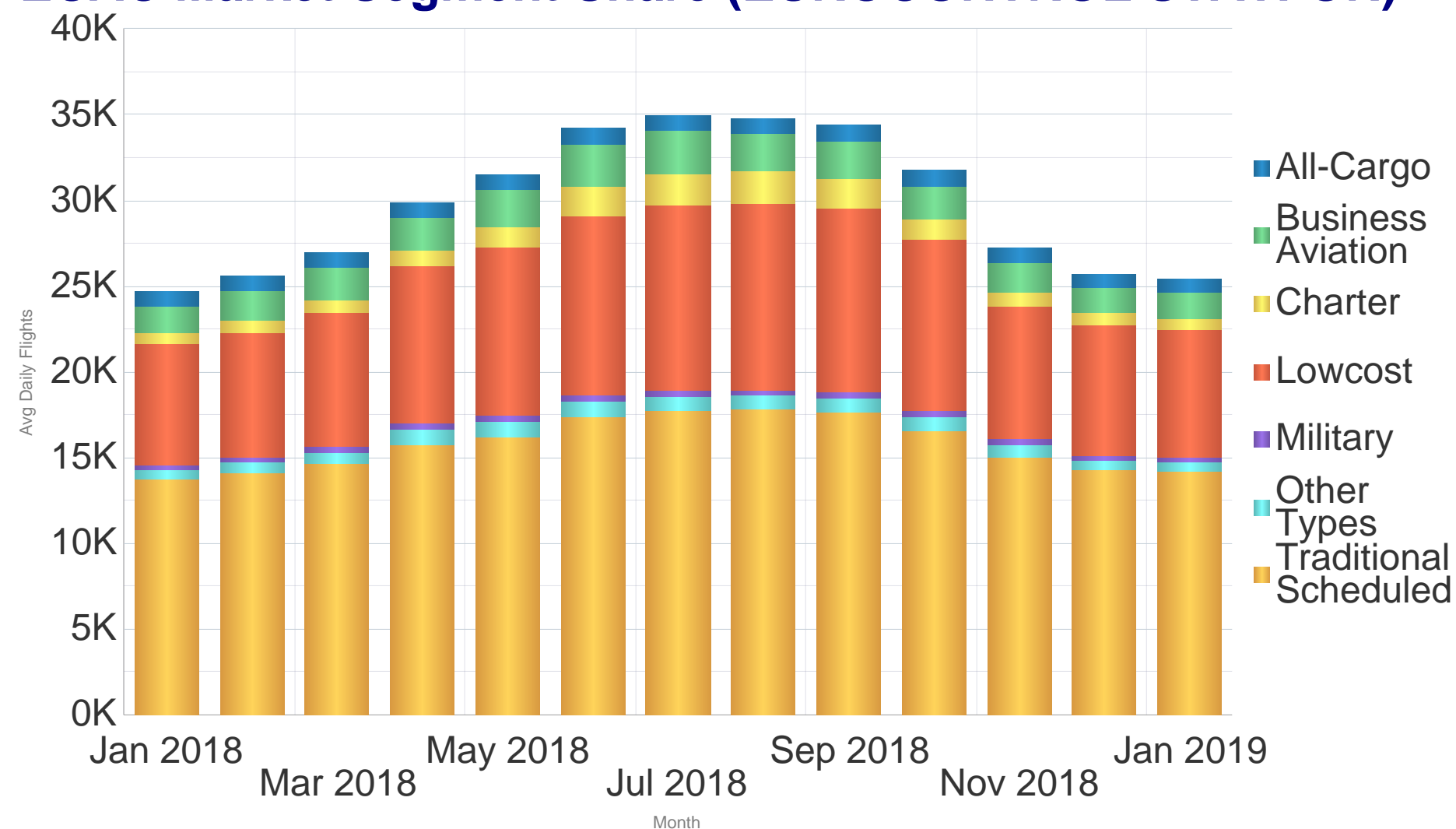
All Causes Arrival Punctuality for January 2019



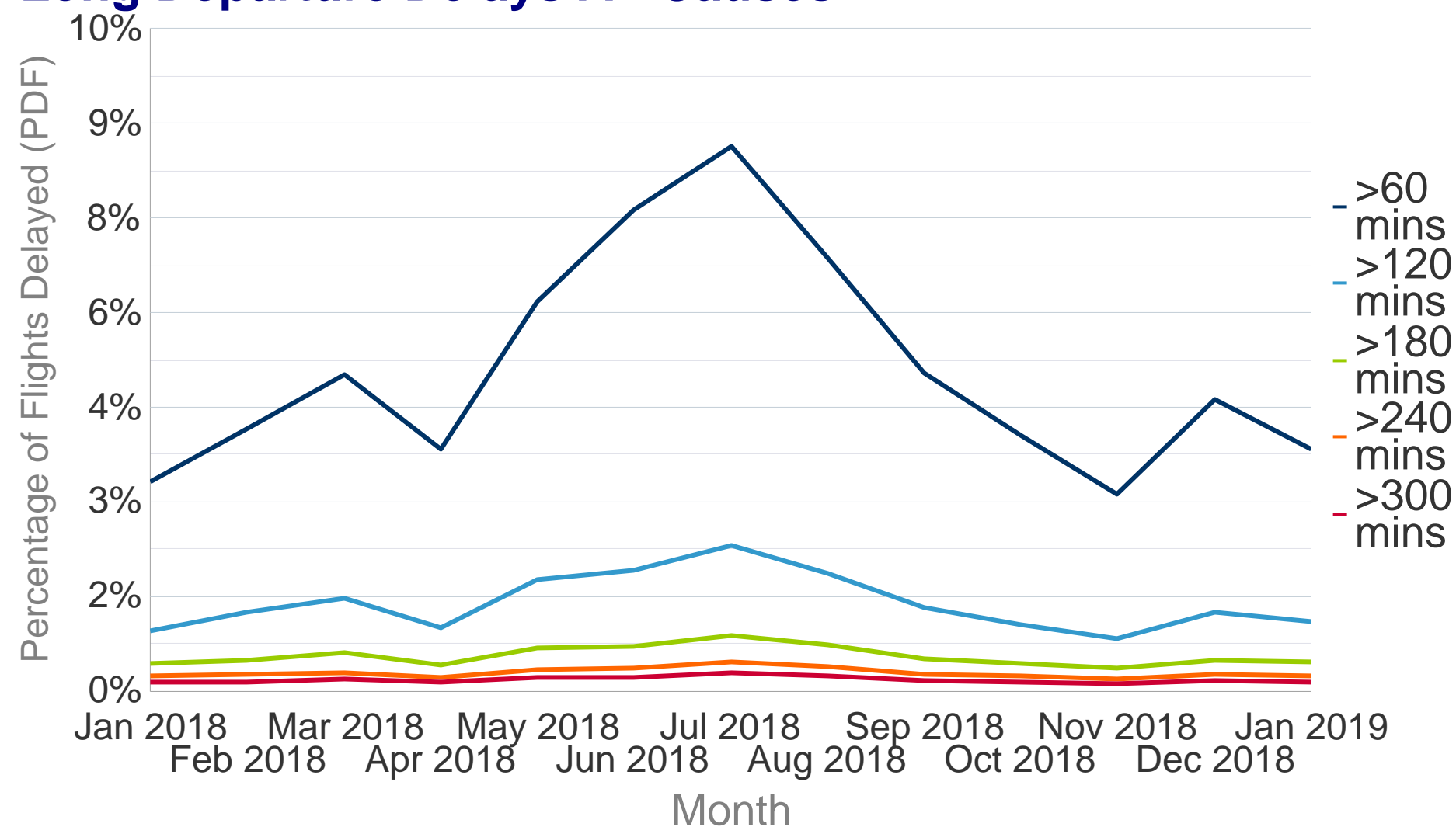
In January 2019, 39.6% of the flights departed within the 5 minutes threshold before or after the scheduled departure time (STD); **a decrease** of 1.4 points from 41.0% compared to previous year. Flights delayed >30 minutes from all-causes **increased** from 9.1% to 9.8%.

In January 2019, 23.2% of the flights arrived within the 5 minutes threshold before or after the scheduled arrival time (STA); **a decrease** of 0.3 points from 23.5% compared to previous year. Flights delayed >30 minutes from all-causes **increased** from 9.7% to 10.3%.

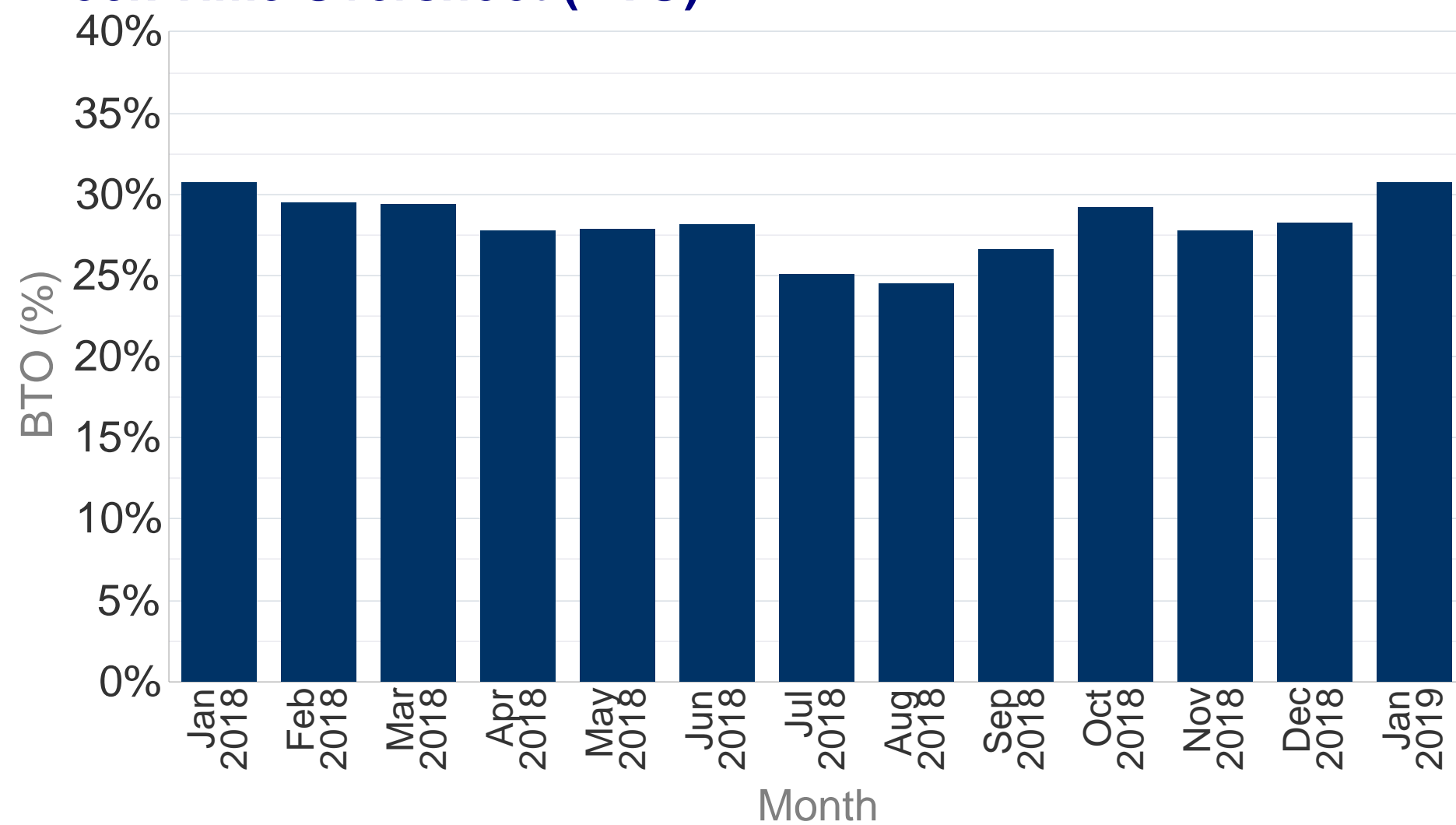
ECAC Market Segment Share (EUROCONTROL STATFOR)



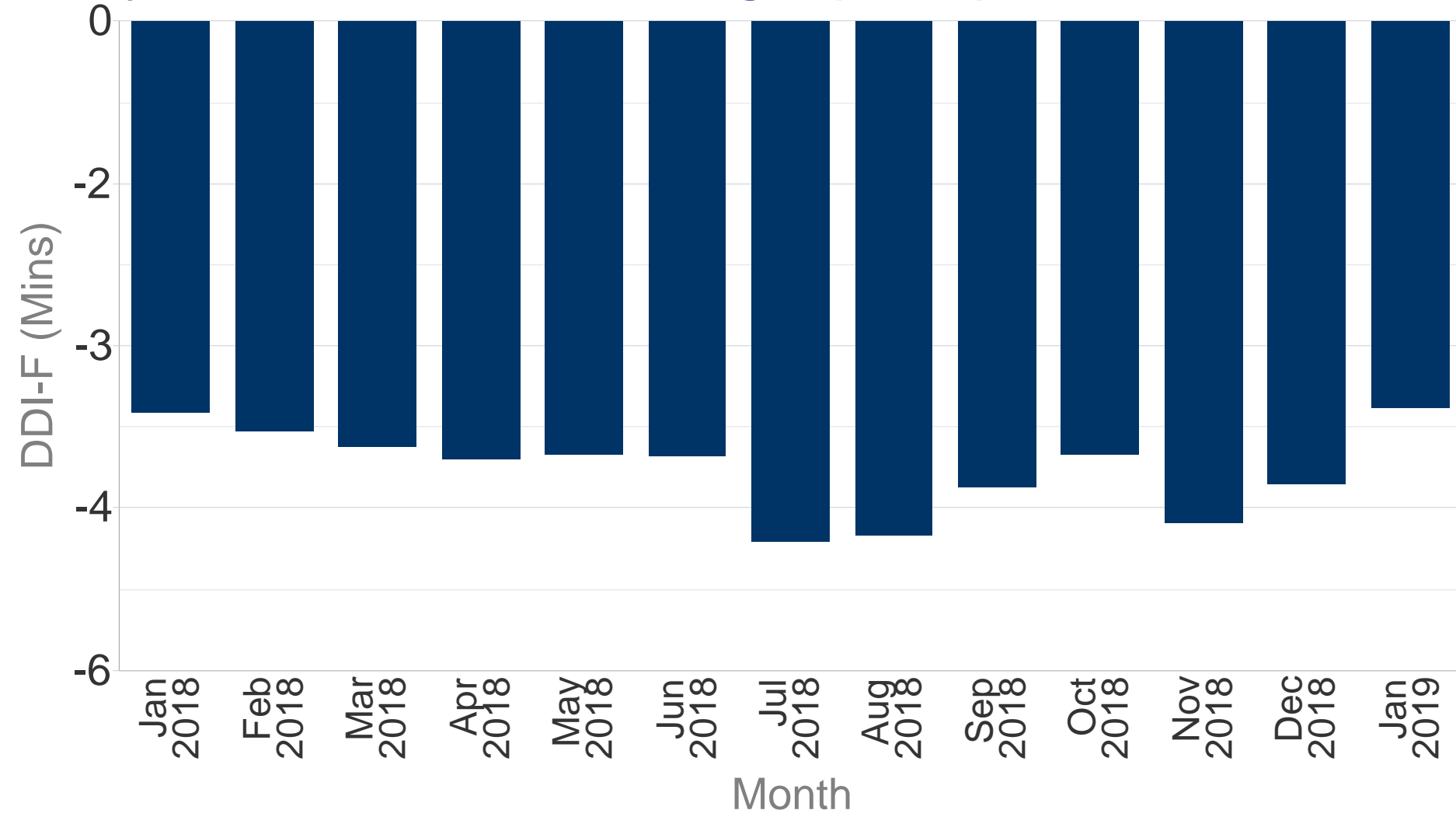
Long Departure Delays All-Causes



Block Time Overshoot (BTO)



Delay Difference Indicator - Flight (DDI-F)



©2019 The European Organisation for the Safety of Air Navigation (EUROCONTROL). This document is published by EUROCONTROL for information purposes. It may be copied in whole or in part, provided that EUROCONTROL is mentioned as the source and the extent justified by the non-commercial use (not for sale). The information in this document may not be modified without prior written permission from EUROCONTROL.