

The EUROCONTROL Agency Structure

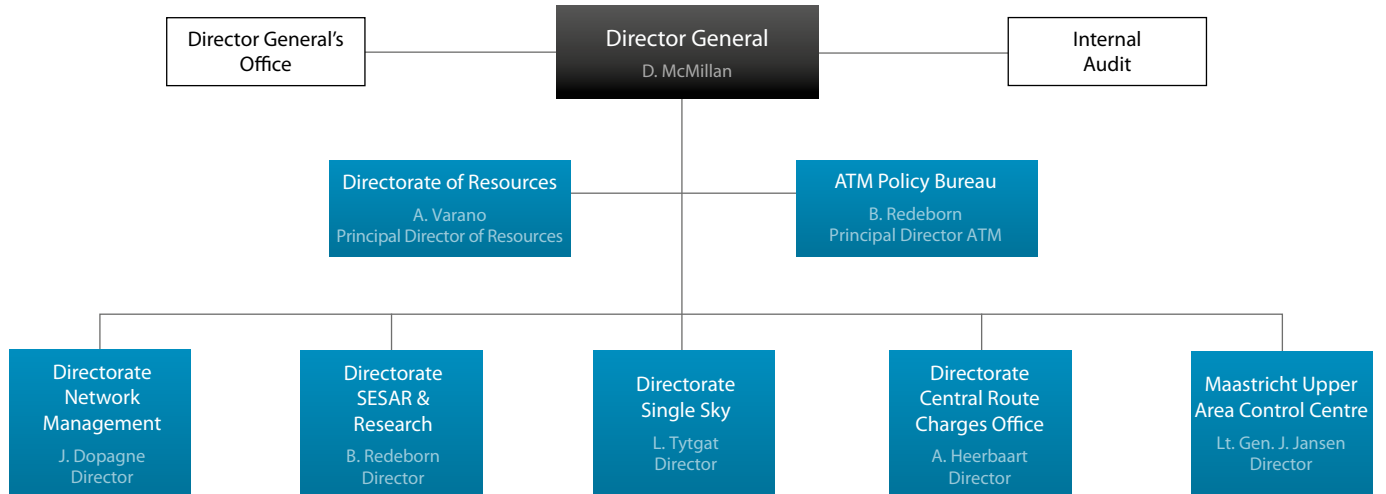


The European ATM environment is undergoing significant changes. In order to improve the way it meets the needs of all its 39 Member States and to contribute more actively to the successful delivery of the Single European Sky, the EUROCONTROL Agency has been restructured to ensure separation of its activities related to regulatory support and those related to service provision.

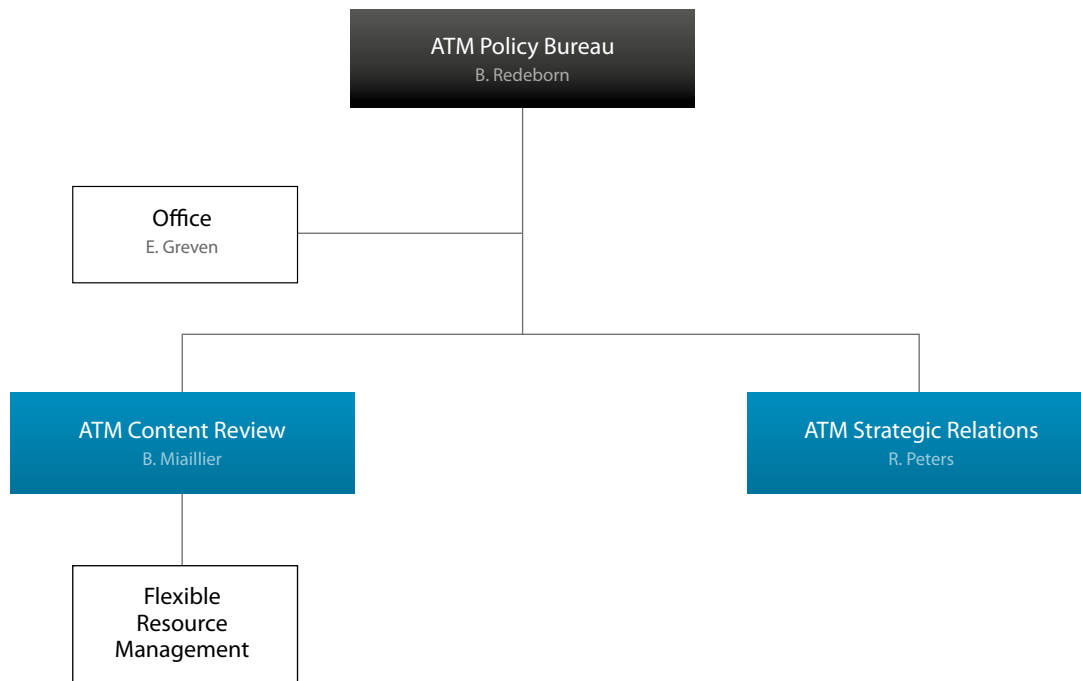
Table of contents

EUROCONTROL Agency Structure	4
ATM Policy Bureau	5
Directorate of Resources	6
Directorate Network Management	7
Directorate SESAR and Research	8
Directorate Single Sky	9
Directorate Central Route Charges Office	10
Maastricht Upper Area Control Centre	11

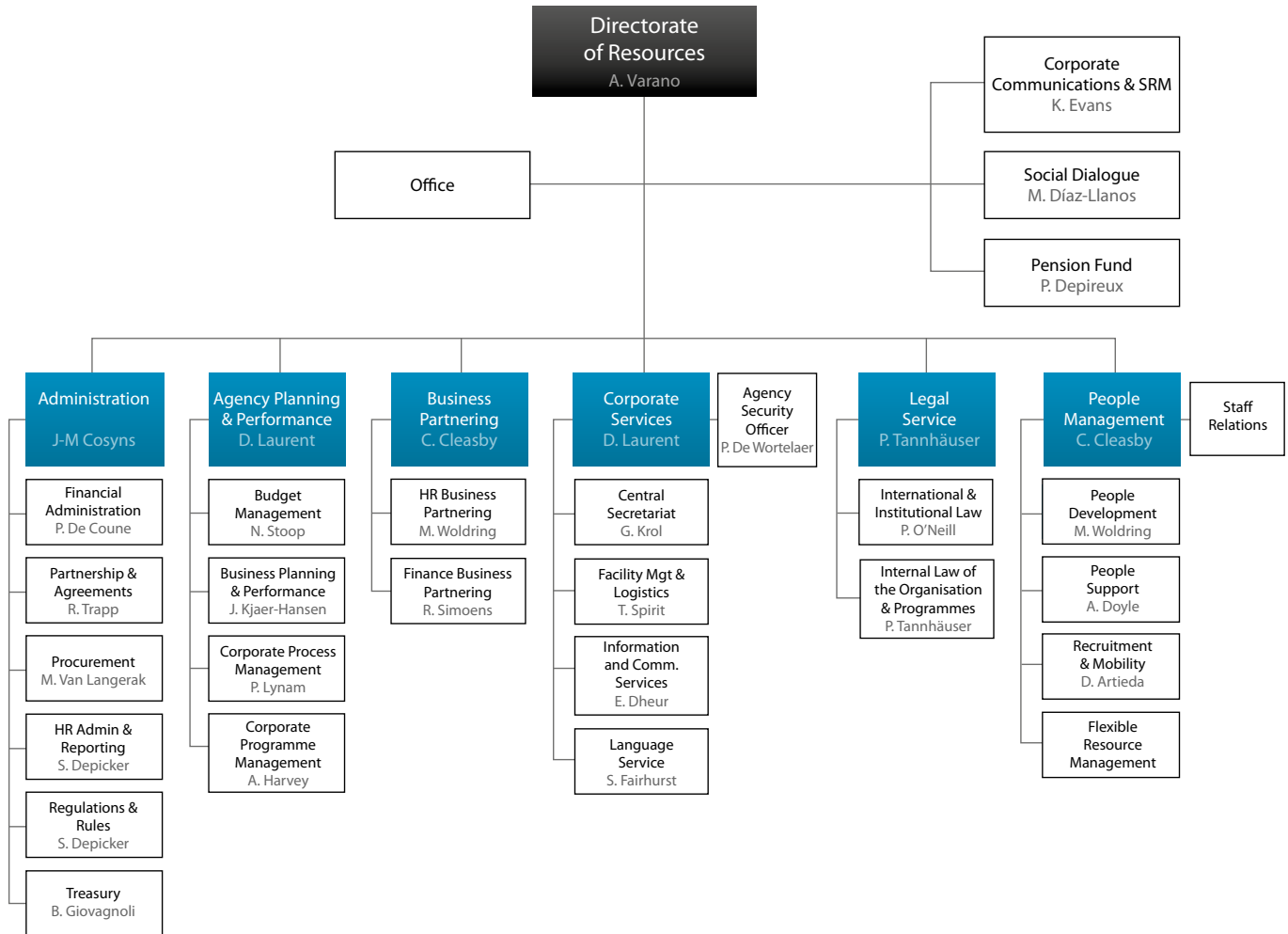
EUROCONTROL Agency Structure



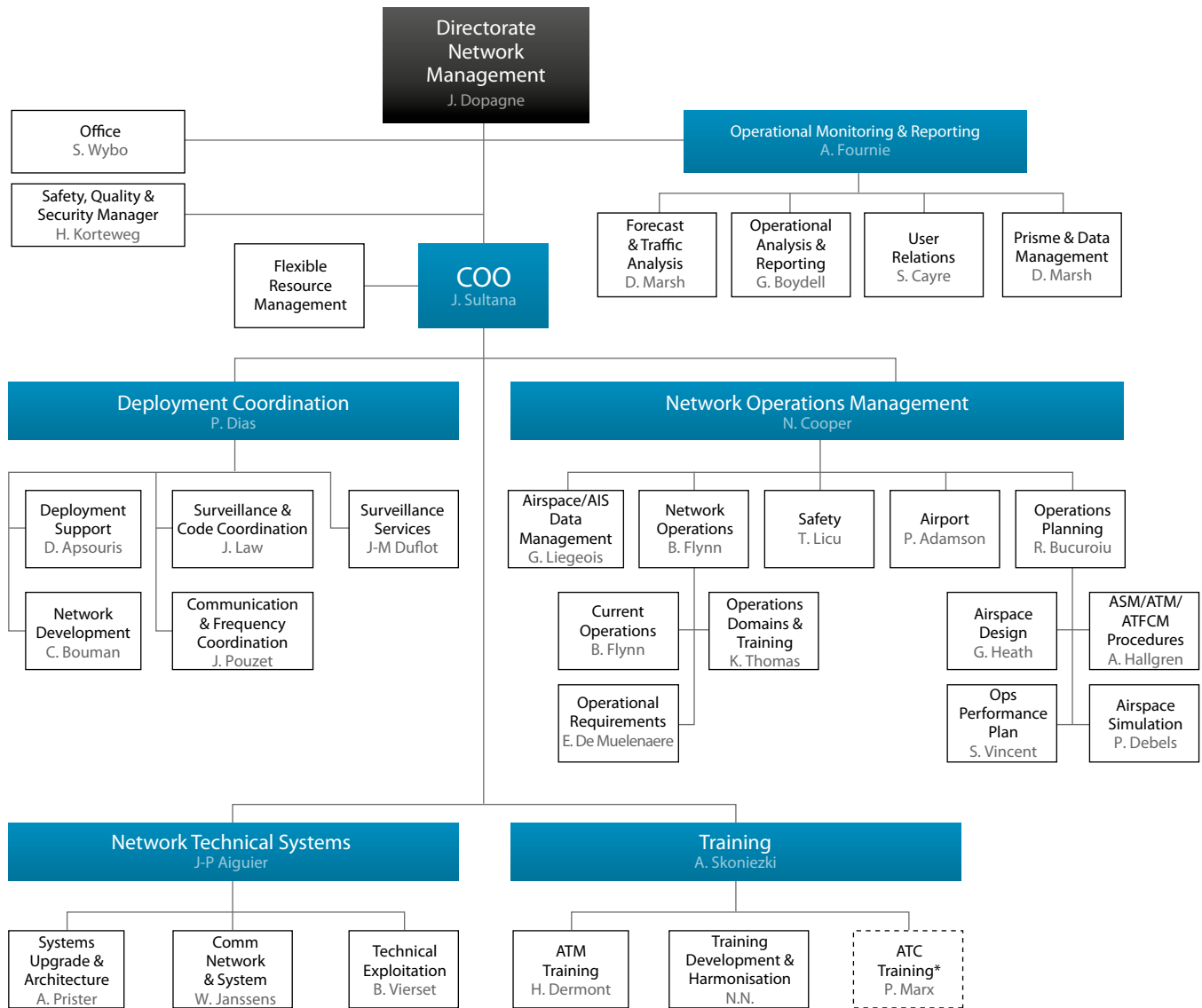
ATM Policy Bureau



Directorate of Resources

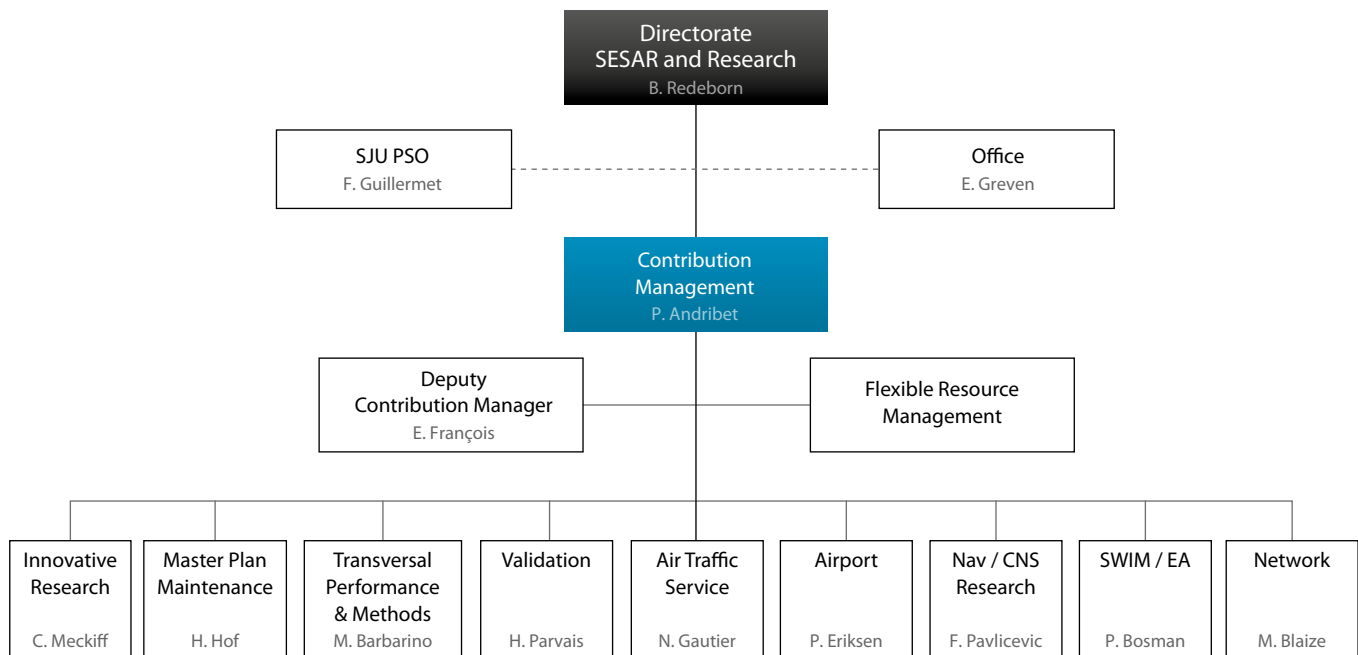


Directorate Network Management

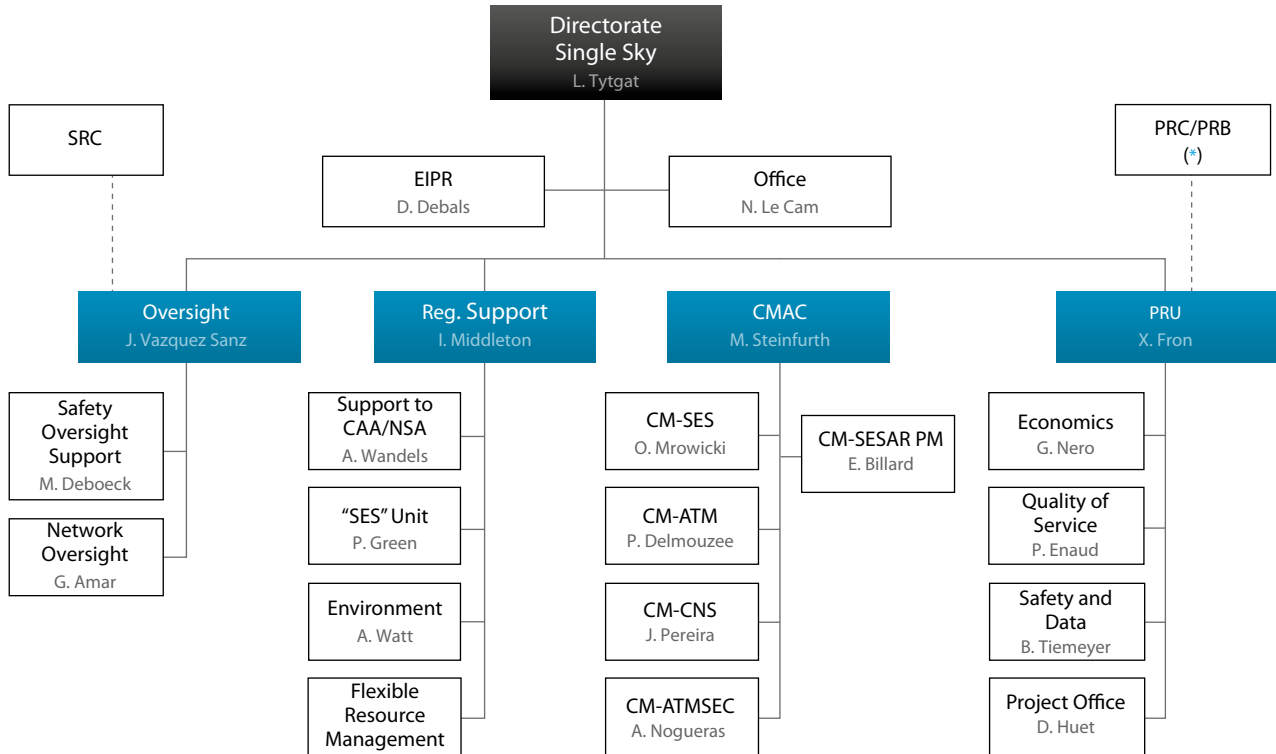


*day-to-day management by MUAC

Directorate SESAR and Research

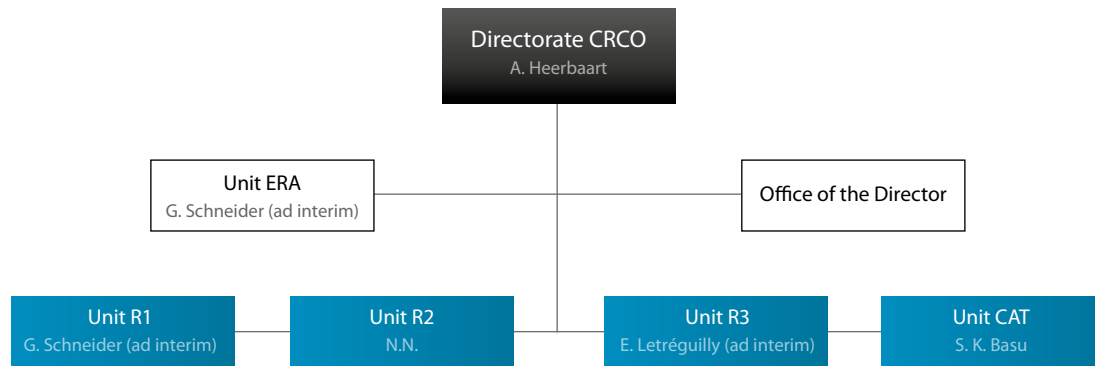


Directorate Single Sky



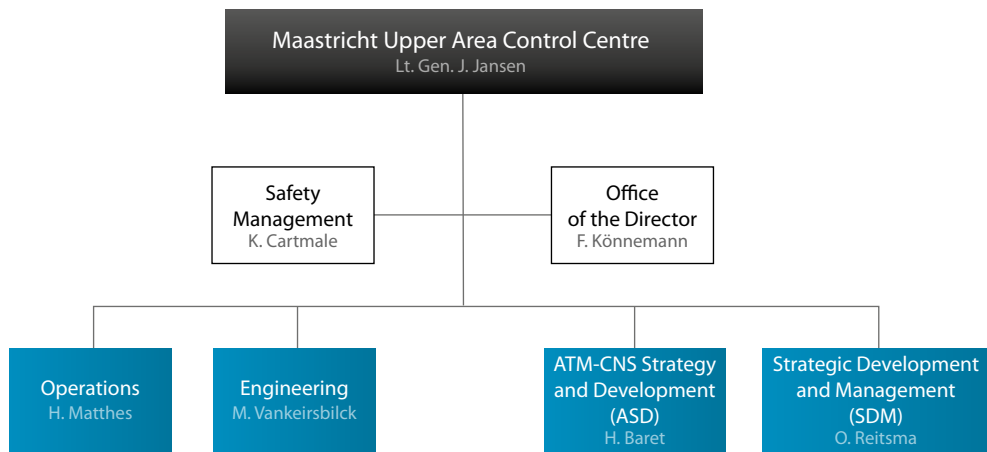
(*) The PRC will be supported by the Performance Review Unit (PRU) operating under the EUROCONTROL Agency with the appropriate level of independence

Directorate Central Route Charges Office



ERA: Economic & Regulatory Affairs
R1: System & Business Development
R2: Business Processes Engineering and ICT Operations
R3: Billing and Customer Relations
CAT: Collection - Accounting and Treasury

Maastricht Upper Area Control Centre





© April 2011 - European Organisation for the Safety of Air Navigation (EUROCONTROL)

This document is published by EUROCONTROL for information purposes. It may be copied in whole or in part, provided that EUROCONTROL is mentioned as the source and it is not used for commercial purposes (i.e. for financial gain). The information in this document may not be modified without prior written permission from EUROCONTROL.

www.eurocontrol.int