

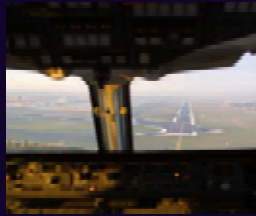
The EATM's APR coordinates Airside Capacity Enhancement (ACE) for the benefit of EUROCONTROL's stakeholders.

#### ACE projects ~ the next step

ACE project strategy hosts several complementary capacity enhancement systems, techniques and methods that are available to the airport community:

#### CAMACA

The Commonly Agreed Methodology for Airport Airside Capacity Assessment (CAMACA) is a method for airport capacity planning. The package includes modules for Runway, Taxiway, and Apron capacity assessment. The program, with user manual, is available for download via <http://www.eurocontrol.int/camaca>



#### PILOT REACTION AND RUNWAY OCCUPANCY TIMES

A method for the collection and analysis of overall fleet ROT results to establish best practice and improve runway efficiency.

For more information on ACE and its related projects, contact Eurocontrol <http://www.eurocontrol.int/eatmp>

Photo credits:  
Vasco Garcia (main)  
Jorgos Tsambikakis  
Luca Baroncelli

# PIATA

meet the demand for capacity

## PERFORMANCE INDICATORS ANALYSIS TOOL FOR AIRPORTS

Airside Capacity Enhancement in action with PIATA

Airside Capacity Enhancement is a priority.  
Use **PIATA** to manage airside capacity efficiently.

#### Contacts

Gregory de Clercq  
ACE Project Manager  
Airport Operations Programme  
Airport Throughput Business Division  
EATM  
EUROCONTROL Headquarters  
96 Rue de la Fusée  
B-1130 BRUSSELS  
Tel: +32-2-729.37.67  
Fax: +32-2-729.91.93  
Email: [gregory.de-clercq@eurocontrol.int](mailto:gregory.de-clercq@eurocontrol.int)

#### Airport Operations Programme

EUROCONTROL's Airports Operations Programme (within the European Air Traffic Management Enhancement Programme) consists of four projects: Advanced Surface Guidance and Control System; Airport Airside Capacity Enhancement; Collaborative Decision Making; and Runway Safety.

APR is enhancing airport safety and capacity by improving airport operations and introducing new technologies.

APR provides airports with long-term strategies to improve capacity and cost efficiency, while remaining environmentally sound.

The European Air Traffic Management Programme (EATM) is a European-wide, ATM-Performance enhancement programme. The EATM is managed by the EUROCONTROL Agency on behalf of member states and other participating States. EUROCONTROL's mission is to create a common European ATM environment. The programme aims to ensure high levels of safety, enhance capacity, and improve the overall performance of the European ATM system in the support of the implementation of the EUROCONTROL ATM Strategy for the years 2000+.

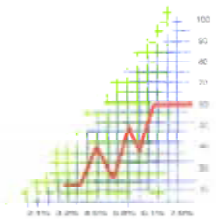
© EUROCONTROL 2004

This document is published by EUROCONTROL in the interests of exchange of information.

It may be copied in whole or in part, providing that the copyright notice and disclaimer are included. The information contained in this document may not be modified without prior written permission from EUROCONTROL.

EUROCONTROL makes no warranty, either implied or express, for the information contained in this document, neither does it assume any legal liability or responsibility for the accuracy, completeness or usefulness of this information.





TRAFFIC DEMAND

# Demand

## Demand for airside capacity

In the next two decades, predicted air traffic growth represents a formidable challenge for Europe's airports.

This means extra pressure on runway operations.

So, there is the challenge: Europe's airports must respond to demand, adapt, and move forward into the 21st Century.

# PIATA

## Introducing PIATA

A PC-based tool, PIATA is used to:

- ✓ identify bottlenecks
- ✓ Identify non-optimised areas
- ✓ assess operational improvement scenarios.

A knowledge of efficiency indicators is the basis for airside capacity and efficiency assessment.

PIATA has therefore been developed by EUROCONTROL's Airport Operations Programme to improve decision-making related to runway operations.



CONFIGURATION

**Respond to the demand for airside capacity. Find out how PIATA is used to achieve results at airports throughout Europe. . .**

# ACE

## ACE with PIATA

PIATA provides a way of analysing efficiency indicators to aid management decisions, improve runway throughput, and enhance airside capacity.



# PIATA

PERFORMANCE INDICATORS ANALYSIS TOOL FOR AIRPORTS

# Solution

## PIATA - a practical solution to airside capacity

The Performance Indicators Analysis Tool for Airports – or PIATA – is a PC-based software model.

Collected data is pre-processed and analysed with PIATA to model runway operations, under existing or alternative scenarios.

The outputs from the PIATA model are then used to make informed decisions.

PIATA is also used to explore possible outcomes and alternative scenarios.

This can be achieved with:

- ▶ "What if " tests
- ▶ "Sensitivity Analysis"
- ▶ "Goal Seeking".

The insights gained - such as identifying "bottlenecks" or constraining factors - are then used to improve runway operations and release latent capacity.

# Results

## PIATA achieves results

The PIATA model provides fresh insights into runway operations. The system offers:

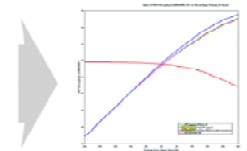
- ✓ the flexibility to explore alternative scenarios for various configurations
- ✓ fast processing to obtain results (useful outputs).

In conclusion, PIATA provides a modelling tool to assist decision makers with the enhancement of airport efficiency.

### Requirements

The PIATA model uses the Microsoft EXCEL™ spreadsheet package. Statistical modelling capability is built into the program

The PIATA program is available in 2006 from EUROCONTROL.



EFFICIENCY INDICATORS

# PIATA

PERFORMANCE INDICATORS ANALYSIS TOOL FOR AIRPORTS